



# AVANTI FIELDS

## SCHOOL

---

# Parents' Welcome Pack

Parent information for students new to Avanti Fields



---

# Welcome from the Principal

---



Dear Parents

We look forward to welcoming your child to Avanti Fields School in August and hope that this booklet will help to answer some of the questions you might have.

We believe passionately in supporting, encouraging and developing young people to be the very best that they can be and place great emphasis on the importance that personalised pastoral care has for our students when they join us in Year 7.

We encourage parents to work with us in partnership so that your son or daughter begins their time with us with confidence and excitement for the journey ahead.

We thank you for your support during this important time in your child's education.

**Emma Taplin**  
Principal

---

# Contents

---

Contents	Page
Communication	5
Parents' Evenings	6
Pastoral care	6
Curriculum	7
Homework and independent learning	8
Personal, Social and Health Education (PSHE)	8
Enrichment	9
Learner qualities and character formation	10
Behaviour for learning	11
School standards	14
Uniform list (including PE kit)	15
Equipment list	18
Student property ( including mobile phones)	18
Attendance (including holidays)	19
School catering	20
Payments	22
Menu Example	23
Our curre	24
Avanti Fields day	25
Term Dates	25





---

# Communication

---

At Avanti Fields, we understand that open, regular, two way communication is essential in building a strong partnership between school and home. Communication on school events happens through a range of channels and through regular email updates.

## School-to-home

### Newsletters

The school newsletter, available via email, is published half termly and includes updates, important achievements and successes as well as information about key events and messages for parents.

### Coffee Mornings

Parent coffee mornings are scheduled each half term ; this is an opportunity for parents to drop in and meet with the Principal in an informal setting, to share any ideas or ask any questions.

### Reports

All students will receive three progress reports every year, including one full written report with succinct subject specific guidance and targets informing parents of how best they can support their child's learning at home. Each report also will provide a key stage 3 target grade, an end of key stage 3 prediction for each subject based on assessments and attitude to learning, and an assessment of whether the student is in line to achieve their target by the end of key stage 3.

If parents have any concerns about the progress reports, they should contact their child's tutor in the first instance and they will be happy to help.

## Home-to-school

We encourage you to view your child's tutor as the first point of call. Tutors can be contacted via their email.

Tutors will be allocated in June and further information and contact details shared.

## Parents' Evenings

Parents' evenings are organised throughout the year. These are opportunities when parents can meet subject teachers and tutors and discuss individual progress.

The first year 7 tutor parent evening will be held in the first half term. This is a key time for parents to meet their child's tutor to discuss how well their child is settling at Avanti Fields School and raise any additional queries or concerns.

The second parents' evening is subject specific, providing parents with the opportunity to meet with the teachers to discuss their child's learning and progress across the curriculum. We also hold information evenings to provide further insight into curriculum areas and how parents can support their child.

However, parents are also encouraged to contact the tutor or teacher if they wish to discuss the progress of their child rather than wait for a parents' evening.



## Pastoral Care

Students in each year are grouped into tutor groups. Each tutor group has a form tutor who supports each student both pastorally and academically. Form tutors will have detailed knowledge of all of the students in his or her care, ranging across all their subjects and their well-being. Parents are asked to make contact with the tutor in the first instance if any problems or questions arise involving their child.

Our pastoral lead, Miss Bigginton is responsible for working with the form tutors, co-ordinating and supporting their work, and ensuring that every student reaches their potential.



## Curriculum

The Avanti Fields curriculum has been designed to meet students' individual learning needs, so every student has the maximum opportunity to succeed and realise their ambitions.

Our curriculum is planned in order to prepare students for success at GCSE, over the five years, starting from Year 7. Students will learn the key skills and concepts for success during key stage three and will begin GCSEs in Year 10.

The subjects that students will follow in Year 7 are below:

Subject	Number of periods per week	Subject	Number of periods per week
English	4	IT	1
Maths	4	Philosophy, Religion, Ethics	3
Science	4	Art/ DT	2
History	2	Expressive arts – Drama/ Music	1
Geography	2	Citizenship	1
Spanish	2	PE	2
Sanskrit	1	Yoga	1

Students will have 6 lessons per day, 30 a week. Lessons are 55 minutes long. Alongside lessons, students will attend tutor time every day.

More information about the curriculum content in Year 7 can be found on the school website: curriculum. <https://avanti.org.uk/avantifields/curriculum/>

# Homework & Independent Learning

All students are given homework on a regular basis, which can be completed at home or by using the facilities within the school. The purpose of homework is to consolidate and extend the learning from lessons, or prepare for future lessons, through pre-learning. All homework tasks are embedded in the curriculum and relate to the programme of learning.

Year 7 students will be given homework once per week, in each subject, up to an hour maximum, sometimes less.

Students will log their homework in planners which parents should check on a daily basis.

We also provide a reading log where students are expected to record their regular reading (at least 1 hour per week). We ask parents to discuss what their son or daughter is reading and sign the record each week.

# Personal, Social & Health Education

Tutoring, personal development and character formation are at the heart of what we do at Avanti Fields. Through our tutor programme, PRE, citizenship and extra-curricular opportunities, we provide a stimulating and nurturing environment that enables students to fulfil their potential and prepare them for life after their time with us.

The themes that we cover in Year 7 are:

Me and My Identity	Anti-Bullying
E-Safety	Healthy Living
Mental well-being	Personal safety
Fire and road safety	Being British

# Enrichment

We want every child at Avanti Fields to have the opportunity to participate in an extra-curricular activity of their choice.

Activities will include a range of sports, arts and STEM activities that will run from 3.30 – 4.30 pm.

The current programme includes:

Football	Science club	Tennis	Maths club
Drama	Art club	Basketball	Badminton
Debating	Kirtan club	Dodgeball	

Some will be on a paid basis; registration and payment will be communicated and will be confirmed at the start of each term.



# Learner Qualities & Character Formation

At Avanti Fields, our aim is to enable our students to be the very best version of themselves and ultimately contribute to making the world a better place (The Avanti Way).

Through a curriculum built on the Avanti three pillars and by actions underpinned by the six core values, students are able to learn, develop and grow into a life of fulfilled potential.

'The Avanti Fields Way' wheel, devised by both our staff and students, visually demonstrates the learner qualities and behaviours we want our school community to develop and embody. We believe that 'The Avanti Fields Way' wheel underpins our academic, character and spiritual curriculum to clearly guide and empower our students to flourish in all aspects of school life and beyond.

## The Avanti Fields Way wheel infographic



# Behaviour for Learning

We believe in order to achieve the aims of the school and to enable effective teaching and learning to take place, good behaviour in all aspects of school life is necessary. To achieve this aim, we have clearly identified and defined the types of learners and learner behaviours we wish our school community to embody and which are explicitly underpinned by the six core school values:

**Empathy**

**Self-Discipline**

**Respect**

**Integrity**

**Courage**

**Gratitude**

	<b>Empathy</b>			<b>Self-Discipline</b>		
	Collaborative Learner			Consistent Learner		
<b>Learning Behaviours</b>	Actively participates in class and group discussions and values the input and works well with others			Follows set routines, plans and organises tasks well with timely submissions, takes responsibility for own behaviour		
	Communication	Generosity	Listening	Self-efficacy	Concentration	Perserverance
<b>Behaviour</b>	Theft			Homework		
	Bullying			Fighting / Assault		
	Racist Incidents			Equipment		
				Uniform		
				Lateness		
<b>Achievements</b>	Generosity			Academic Achievements		
	Kindness			Independent Learning		
	Compassion			Self-efficacy		
	Communication Skills			Concentration		

	<b>Respect</b>			<b>Integrity</b>		
	Thoughtful Learner			Responsible Learner		
<b>Learning Behaviours</b>	Values the learning opportunity, values feedback and acts upon it, values resources and the environment for learning, presents work with care			Takes ownership of doing the right thing to prioritise learning, ready to correct attitude		
	Resilience	High Expectations	Reflective	Honesty	Foregiveness	Self control
<b>Behaviour</b>	Disruptive behaviour			Code of conduct		
	Defiance			Inappropriate language		
	Verbal abuse			Missed detentions		
				Truancy		
				Inadequate work		
<b>Achievements</b>	Resilience			Honesty		
	High expectations			Self-control		
	Reflective					

	<b>Courage</b>			<b>Gratitude</b>		
	Confident Learner			Appreciative Learner		
<b>Learning Behaviours</b>	Ready to try new things, keen to make progress, ask questions, welcomes feedback			Recognises the input of adults and peers, celebrates and enables the priviledges and opportunities for learning		
	Curiosity	Optimism	Problem solving	Receptive	Humility	Charity
<b>Behaviour</b>	Lack of effort			Damage to property		
	Failure to respond to feedback			Insolence		
<b>Achievements</b>	Perserverance			Gratitude		
	Confidence			Charity		
	Problem-solving			School representative		
				Humility		

Our behaviour policy aims to develop in students an acceptance of responsibility for their own behaviour, whilst also identifying ways in which we can help remove barriers to learning and promote self-reliance and independence.

Furthermore, through our clear systematic approach to learner qualities and behaviour we believe that everyone has the right to:

- Feel safe in the school
- Enjoy and achieve
- Learn and teach without unnecessary interruption
- Be listened and heard
- Work in a pleasant environment for learning
- Be treated honestly and fairly, with dignity and respect

# School Standards

In school our expectations are high, and in reflection of the school standards, we ask that parents reinforce and support our school rules and expectations from the outset:

All students are expected to:

1. Wear uniform with pride
2. Be ready for learning
3. Attend school regularly and be on time
4. Treat others with respect and dignity
5. Value and care for our environment, both in ourschool and in the wider community

These standards applies to whenever students can be identified as a member of Avanti Fields school community, including **when we are on or off site.**

## Code of Conduct

- We will not swear
- We will not smoke
- We will not chew gum
- We will not use mobile phones or MP3 players inside the building unless we are authorised to do so in the pursuit of learning

## Uniform

Uniform and achievement are a high priority at Avanti Fields School; we believe the way in which students wear their school uniform reflects the importance which is placed on attention to detail and pride in the school.

Set out below is a summary of the Avanti Fields School uniform specification.

The school's approved uniform suppliers are Brigade Clothing ([www.brigade.uk.com](http://www.brigade.uk.com)).

## Purchase from Brigade

<b>Ties</b>	All students will be expected to wear a tie. These should be worn with a traditional knot, large knots or short ties are not acceptable.
<b>Blazers</b>	Blazers must have the school's logo and can only be bought from Brigade Clothing. Logos are not sold separately. Blazers are a compulsory part of the school uniform.
<b>Jumpers (optional)</b>	<b>Only V neck jumpers with the Avanti Fields School logo are allowed.</b> As an alternative, a white top may be worn under the shirt – no visibly coloured clothing should show through. Jumpers will not be permitted to be worn without a blazer.
<b>Blazers</b>	Blazers must have the school's logo and can only be bought from Brigade Clothing. Logos are not sold separately. Blazers are a compulsory part of the school uniform.
<b>PE Kit</b>	<p><b>Boys</b></p> <p>Avanti School PE shorts (Brigade)            Avanti School PE polo shirt (Brigade)            White ankle length socks            Avanti School tracksuit bottoms / Plain navy bottoms non-branded            Avanti School football socks            Avanti School sweatshirt (Brigade optional)            Sports trainers (not plimsoles)            Shinpads (optional)            Plain thermal base layer (for winter, optional)            Appropriate blue or black waterproof            Sweatbands (to cover any religious bracelets, bands that cannot be removed)</p> <p><b>Girls</b></p> <p>Avanti PE skirt            Avanti PE polo shirt            White ankle length socks            Avanti School tracksuit bottoms / Plain navy bottoms non-branded            Avanti School sweatshirt (Brigade optional)            Sports trainers (not plimsoles)            Hair ties where required            Shinpads (optional)            Plain thermal base layer (for winter, optional)            Appropriate blue or black waterproof.            Sweatbands (to cover any religious bracelets, bands that cannot be removed)</p>



## Can be purchased from any retailer

<b>Shirts</b>	A white school shirt must be worn with a top button, which fastens at the neck. The shirt should be long enough to be tucked in and the top button must be fastened at all times. Blouse style shirts with rounded collars are not allowed.
<b>Skirts</b>	Girls may wear a grey skirt, which has two inverted kick pleats and no splits. It is important to ensure that the skirt is knee-length and not made of stretchy material. Students will be asked to replace skirts which no longer comply with the length requirements.
<b>Trousers</b>	Trousers must be grey (not black or charcoal) and of a classic wider style: straight, with no visible zips, studs or buckles and which do not fit closely on any part of the leg.
<b>Shoes</b>	Shoes should be of plain black leather or leather-type, with plain black soles and black laces. Black suede, fabric or canvas type shoes, boots or trainer type shoes are not permitted. Shoes need to be comfortable enough to walk to school in and suitable to wear in wet weather. In winter, students may walk to school in boots, but these should be changed upon arrival at school.
<b>Socks and Tights</b>	Socks should be plain black; tights should be plain black.
<b>Patka / Hijab</b>	Plain black or navy.



All jewellery must be removed for PE and Yoga or covered with a sweatband (religious bracelets only). If earrings cannot be removed, they must be covered with tape (provided by the student).

<b>Piercings</b>	Only one small, plain silver or gold-coloured stud in the bottom of each ear lobe is permitted.
<b>Jewellery</b>	Only religious bracelets and/or necklaces will be allowed and with the exception of a pair of earrings, no other jewellery will be permitted. Religious necklaces should be worn inside the shirt for safety reasons.
<b>Make-up</b>	Make-up, including tinted moisturiser or concealer, is not allowed.
<b>False nails</b>	Excessively long nails are not suitable for school as they have been known to cause injuries to the student if they become caught or bent backwards during sporting activities. Only natural looking, non-coloured false nails are permitted.
<b>Hair</b>	Extreme hairstyles are not allowed. Unnatural hair colours are not permitted. Borders and patterns, including a shaved parting, must not be shaved into the hair or eyebrows.
<b>Hoodies</b>	Hoodies are not allowed to be worn in, or on the way to school and will be confiscated.

## How to Purchase Uniform

The Avanti Fields uniform has been chosen to be practical, easy to wash and cotton rich. The full uniform is available from Brigade Clothing via their online service, [www.brigade.uk.com](http://www.brigade.uk.com) called PARENTS DIRECT.

All orders will be sent directly to you. There is a £3.50 postage and packaging charge on orders below £50. Parents are advised to order early to avoid any delays in receiving items as we expect students to be in possession of all of the items above at the beginning of term.

# Equipped for Learning

Our focus on learning and the value of learning time mean we place great emphasis on the importance of being ready and equipped for every lesson. We ask that parents ensure that their son or daughter comes fully equipped each day.

- Ruler
- Pencil sharpener
- Eraser
- Protractor (180 degrees)
- Compass (for drawing circles)
- Scientific calculator
- Pencil case
- Reading book

## Equipment List

- Pencil
- Pen

# Student Property

## Lockers

As secondary school students, your son or daughter will need to bring the correct books and equipment for different lessons each day. Students should review their timetable for the following day, each evening, and plan what they need to bring.

A locker is available for each student, please provide them with a padlock with a **combination lock**. The school office will keep record of the combination should your child forget it

## Mobile Phones

We do not allow mobile phones to be used within school. We know many parents may wish for their child to carry a phone for the journey to and from school, however, during the school day these must be switched off, kept inside bags and not taken out during the school day.

If a parent needs to get a message to their son or daughter this can be made through the school telephone number.

If a student does not meet these expectations the phone will be confiscated and parents will be asked to come and collect the phone from the school office.

## Lost Property

Please ensure that all items of clothing and personal property are named. Doing so will enable us to reunite the owners with their lost clothes and property!

- If students lose something they should:
- Think back and re-check previous locations.
- Report immediately to a teacher if theft may be involved.
- Check 'Lost Property' on a regular basis.

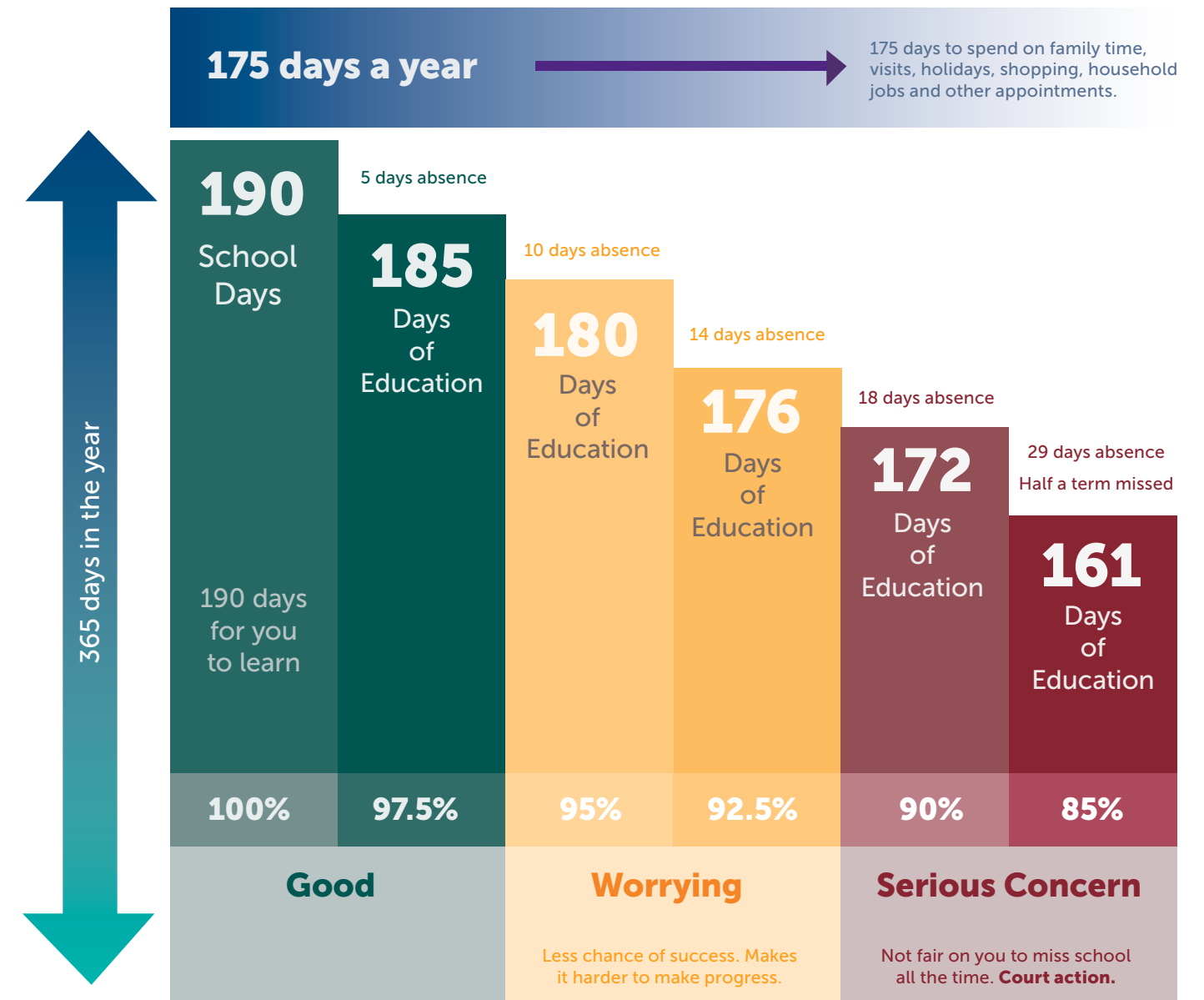
If a student finds something:

- Hand in to reception or form Tutor/Teacher.

Items handed in will be collected and taken to lost property on a regular basis. Lost property will only be kept for six weeks. If unclaimed it will then be disposed of.

# Attendance

Attendance at school has a direct relationship to students' achievement and progress. Our emphasis on attendance is as a reflection of our commitment to ensuring each child fulfils their potential.



At our discretion we can authorise absence for educational reasons, religious observance or on compassionate grounds where we have been pre-notified. Please see our attendance policy for further details.

If your child is ill and cannot attend school, please call the school on **0116 326 6813** (Ext 1) by **8:00am** on the morning of the illness. Alternatively, you can email the school on [office@avanti.org.uk](mailto:office@avanti.org.uk) by 8.00am.

Please provide the **full name of your child, year, tutor group and reason for absence.**

---

# Holiday

---

Due to the significant impact that absences have on student achievement and progress, holidays during term-time will not be authorised.

If there are exceptional circumstances, please complete a leave of absence form (collect from reception) which will be reviewed by the Principal. Absences during term-time should be kept to a minimum due to the impact these have on students.

---

# School Catering

---

## School Meals

An important part of our ethos is around the provision of hot, fresh, nutritious meals. Sharing tasty, healthy school lunches is an integral part of the educational experience at Avanti Fields School, therefore school meals are compulsory for every pupil. Every pupil can have a choice of food and at varying price points.

It is also an opportunity to enhance social skills and table etiquette, ensuring lunchtimes are a positive experience for all.

The lunch meals cooked on-site are vegetarian (in line with the faith ethos of the school) and half-termly menus will be available on the school's website.

Meals can also be designed to meet the needs of children with specific allergies.

We strongly encourage parents who have financial constraints to apply for Free School Meals. This can be done via the council website on <https://freeschoolmeals.leicester.gov.uk/>

## Drinks

Students will have access to drinking water at all times, but parents are requested to provide a water bottle.

We do not allow students to eat sweets or drink fizzy drinks at the school and therefore please do not provide these for your child.



# Payments

## Payment for school lunches

We only accept electronic payments for school meals/break. This easy and simple process is facilitated by ParentPay. ParentPay offers you the freedom to make payments whenever and wherever you like, safe in the knowledge that the technology used provides the highest internet security available.

You will have a secure online account, with a unique user ID and password. You can change these to something you will easily remember and merge accounts of two or more children.

Parents who are unable to make payments online can request a Pay point Barcode from the office.

This will enable parents to pay at any store which displays the 'Pay point' sign.

## BIOSTORE

We operate a pay as you go system, depending on what the students choose. Avanti Fields uses a biometric fingerprint recognition system for lunch payment. You will be responsible for topping up the ParentPay service named "Lunch Payment"

The minimum you can add is £3.00 to a maximum of £175.00.

If the account has not been topped up or there are not enough funds, your child will not be able to purchase lunch.

If your child receives Free school meals, meals will be provided free of charge to a value of £2.45 a day. Any extras purchases, like break for example, will require a ParentPay payment.

Please see an example of pricing opposite:

Mid Morning Snack	
Crudities & Hummus	£1.00
Fresh fruit pot	£1.00
Granola/Yoghurt pot	£1.00
Snack pot	£1.00
Wedges/Waffles/ Potato Snack	£1.00
Samosa/Spring Roll	£1.00

Lunch Time Meal	
Main Meal	
Asian meal with salad, fruit & dessert	£2.45
Western Meal with salad, fruit & dessert	£2.45
Light Meal with salad, fruit & dessert	£2.25
Light Meal Option with salad or fruit	
Panini or Sandwich	£1.85
Jacket Potato	£1.65
Pasta	£1.75

Dessert	
Cake	£0.75
Cookie/Flapjack	£0.75
Yoghurt Pots	£0.60



# Our Current Site



## Reception ▲

Enter our welcoming reception and the entrance to Avanti Fields, a highly personalised environment for each child's learning and development.



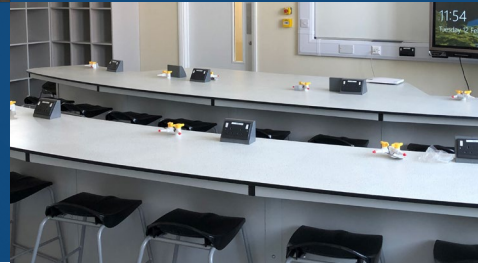
## Classrooms ▼

Our newly-refurbished school boasts 10 bright and well-equipped classrooms that provide the ideal environment for learning and discussion.



## Dining Hall ◀

The dedicated lunch area allows students to enjoy nutritionally balanced and delicious vegetarian meals, prepared and served with love.



## Playground ▼

A spacious playground surrounds the school giving access to a range of sport and leisure facilities.

## Science Lab ▶

Our newest addition to the building brings experiments to life, hosting live demonstrations in addition to fun after-school clubs.

## The Site

Our school is located at our temporary site, a stunning listed building that was previously the Narborough Road School, opened in 1902. The red brick building has housed many school children over the last 100 years, and now has been refurbished to host the students of Avanti Fields, until we move to our permanent home in Hamilton.

## Worship Hall ▼

This beautiful light-filled area provides a sacred space for students to reflect and express gratitude. The hall is also home to regular yoga and drama classes.



# The Avanti Fields Day

8.00 - 8.30	Students able to access school grounds
8.30 - 8.50	Tutor am registration/collective worship
8.30 - 8.50	Period 1
9.45 - 10.40	Period 2
10.40 - 10.55	Break
10.55 - 11.50	Period 3
11.50 - 12.45	Period 4
12.45 - 1.40	Lunch
1.40 - 2.35	Period 5 / afternoon registration
2.35 - 3.30	Period 6
3.30 - 4.30	Clubs (optional)

# Avanti Fields Term Dates

## 2020-2021

<b>Autumn 1</b>	Wednesday 26th August -Friday 16th October*
<b>Autumn Half term holiday</b>	Monday 19th October- Friday 30th October
<b>Autumn 2</b>	Monday 2nd November- Friday 18th December
<b>Christmas holiday</b>	Monday 21st December - Friday 1st January 2021
<b>Spring 1</b>	Monday 4th January*- Friday 12th February
<b>Spring half term holiday</b>	Monday 15th February - Friday 19th February
<b>Spring 2</b>	Monday 22nd February- Friday 26th March
<b>Easter Holidays holiday</b>	Monday 29th March- Friday 9th April
<b>Summer 1</b>	Monday 12th April- Friday 28th May
<b>Summer half term holiday</b>	Monday 31st May - Friday 4th June
<b>Summer 2</b>	Monday 7th June - Friday 9th July
<b>Summer holidays</b>	Monday 12th July
<b>School closure days</b>	Monday 3rd May 2021 – Bank Holiday
<b>School Training days</b> (when Students do not attend)	Monday 24th August 2020 Tuesday 25th August 2020 *Monday 4th January 2021 (TBC)
<b>Trust training days</b> (when Students do not attend)	* Friday 16th October 2020 (TBC) Friday 2nd July 2021 (TBC)

**Avanti Fields Secondary School**

2 Bruce Street, Leicester.  
LE3 0AF

Phone 0116 3266813

Email [avantifields@avanti.org.uk](mailto:avantifields@avanti.org.uk)

Website [www.avanti.org.uk/avantifields](http://www.avanti.org.uk/avantifields)



**AVANTI FIELDS**

Excellence · Virtue · Devotion

Avanti Fields School is part of the Avanti Schools Trust

Avanti Schools Trust is a charitable company limited by guarantee registered in England & Wales

Registered No: 07506598 • Registered Office: Avanti Schools Trust, Wemborough Road, Stanmore, Middx, England, HA7 2EQ