

Year 2 – Spring Block 4 – Fractions – Find a Half

About This Resource:

This PowerPoint has been designed to support your teaching of this small step. It includes a starter activity and an example of each question from the Varied Fluency and Reasoning and Problem Solving resources also provided in this pack. You can choose to work through all examples provided or a selection of them depending on the needs of your class.

National Curriculum Objectives:

Mathematics Year 2: (2F1a) [Recognise, find, name and write fractions \$1/3\$, \$1/4\$, \$2/4\$ and \$3/4\$ of a length, shape, set of objects or quantity](#)

Mathematics Year 2: (2F1b) [Write simple fractions for example, \$1/2\$ of \$6 = 3\$](#)

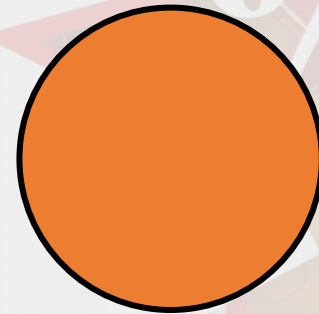
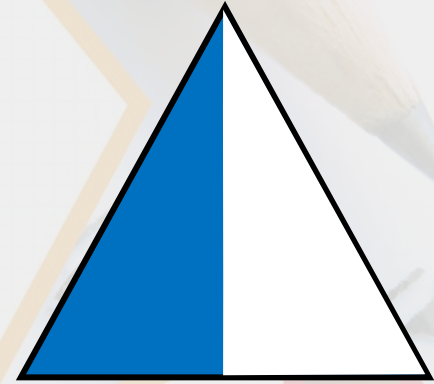
More [Year 2 Fractions](#) resources.

Did you like this resource? Don't forget to [review](#) it on our website.

Step 3: Find a Half

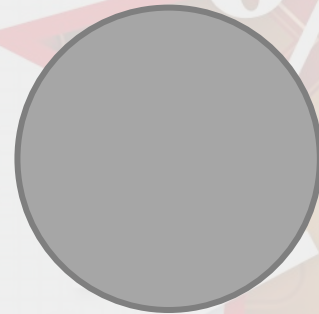
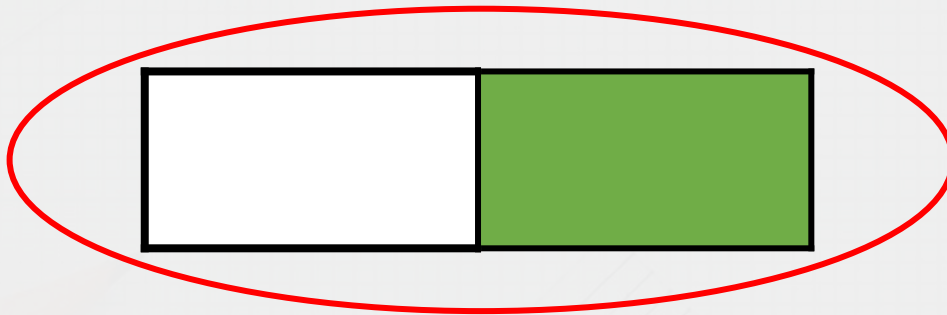
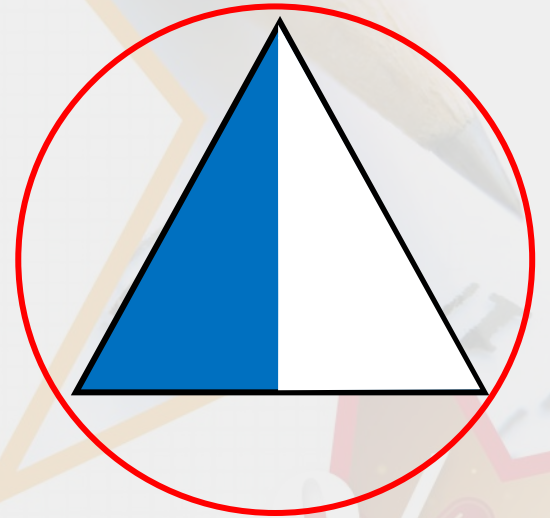
Introduction

Circle the images which represent a half.



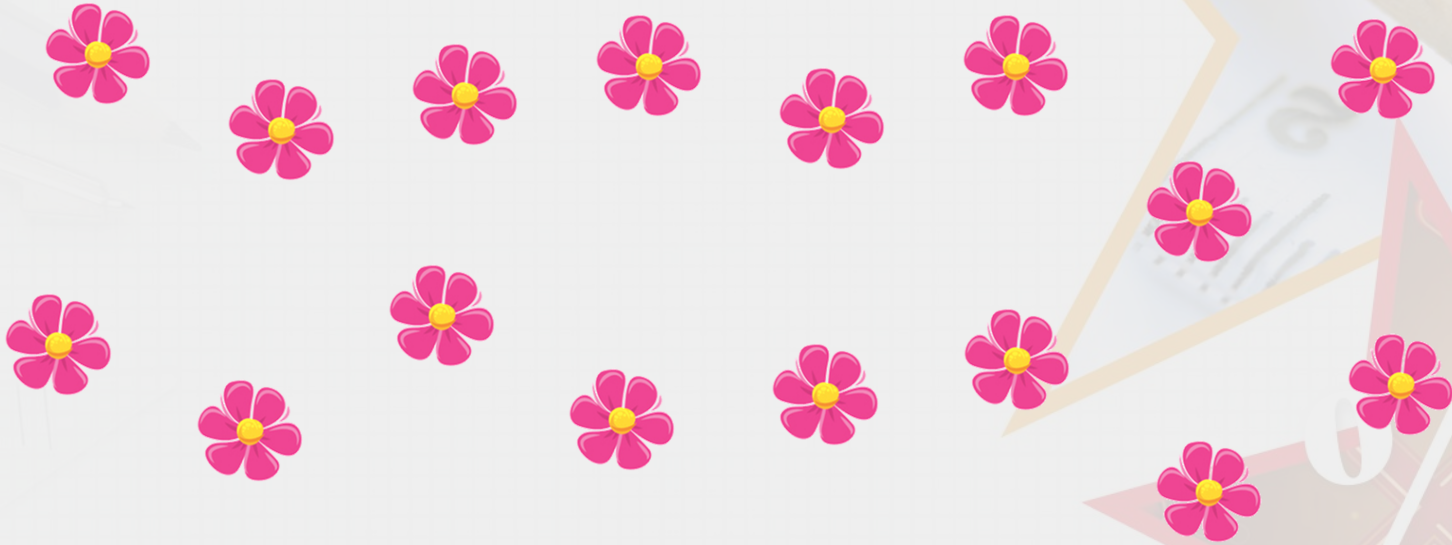
Introduction

Circle the images which represent a half.



Varied Fluency 1

Find half of the flowers. Tick a box to show the answer.



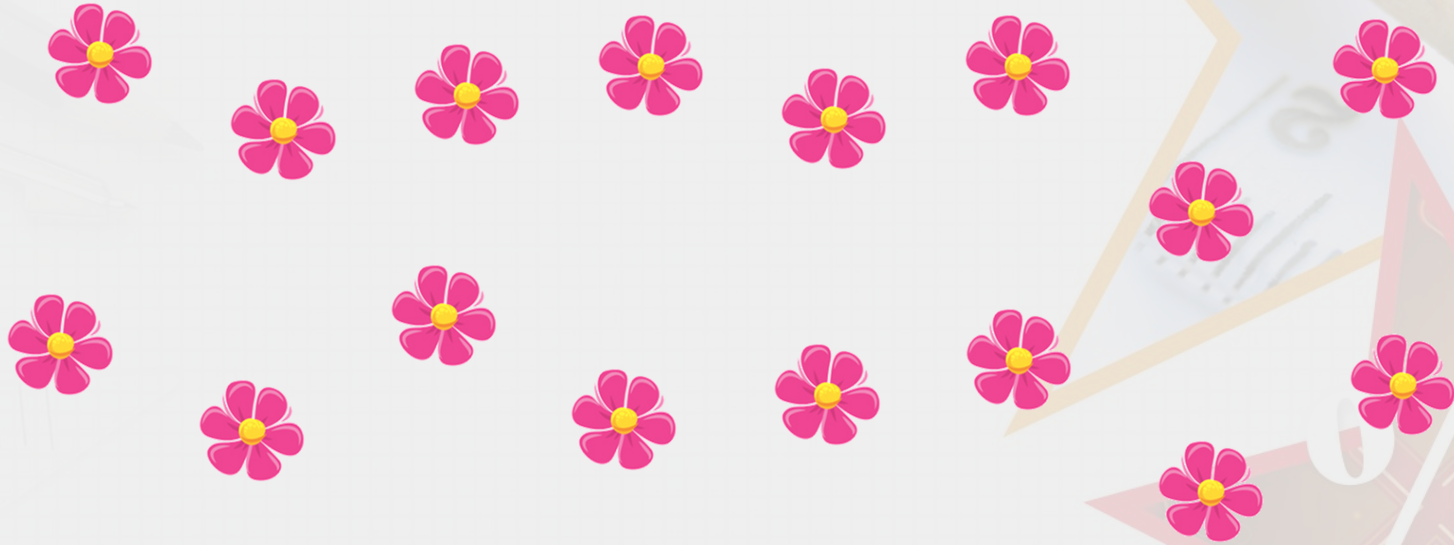
9

8

7

Varied Fluency 1

Find half of the flowers. Tick a box to show the answer.



9

8

7

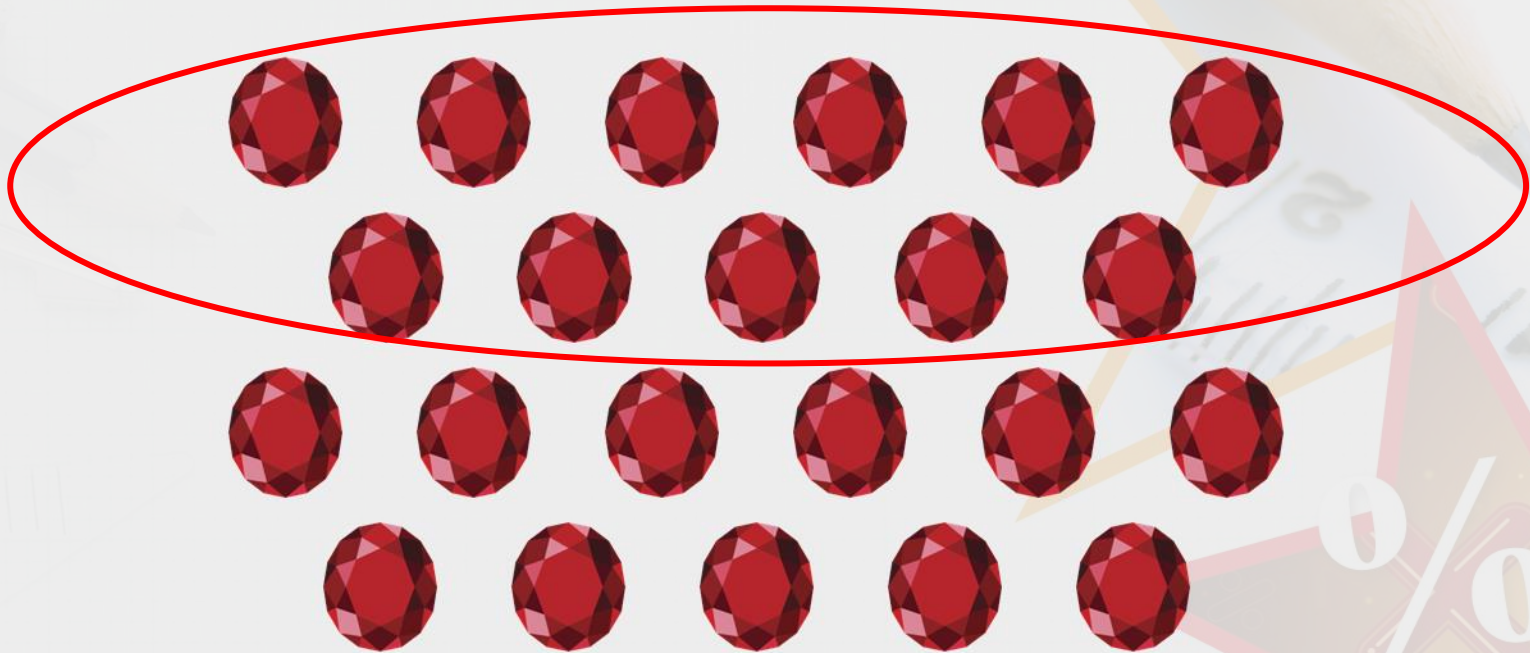
Varied Fluency 2

Circle $\frac{1}{2}$ of the jewels below.



Varied Fluency 2

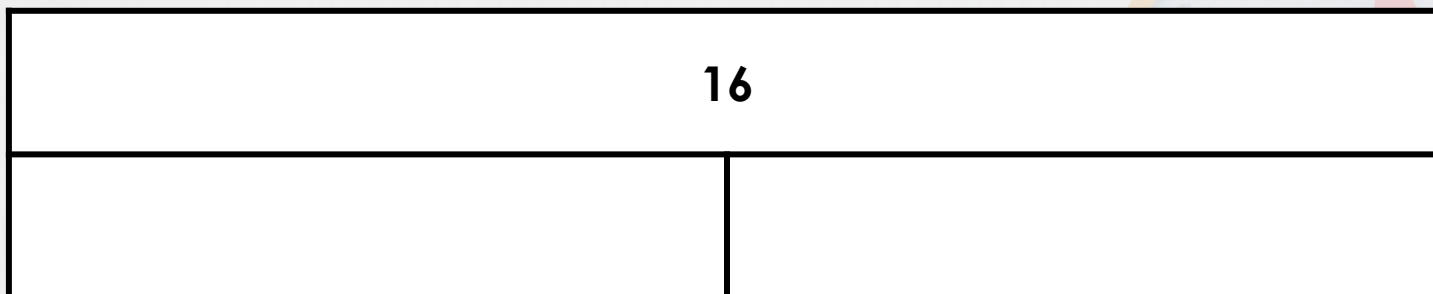
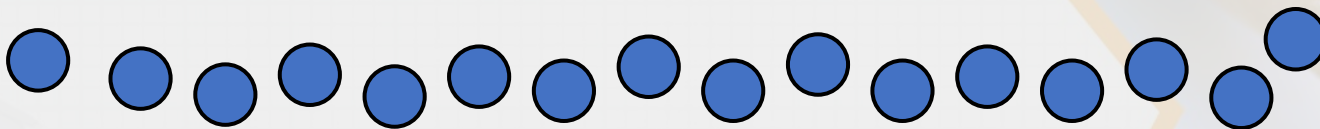
Circle $\frac{1}{2}$ of the jewels below.



$$\frac{1}{2} \text{ of } 22 = 11$$

Varied Fluency 3

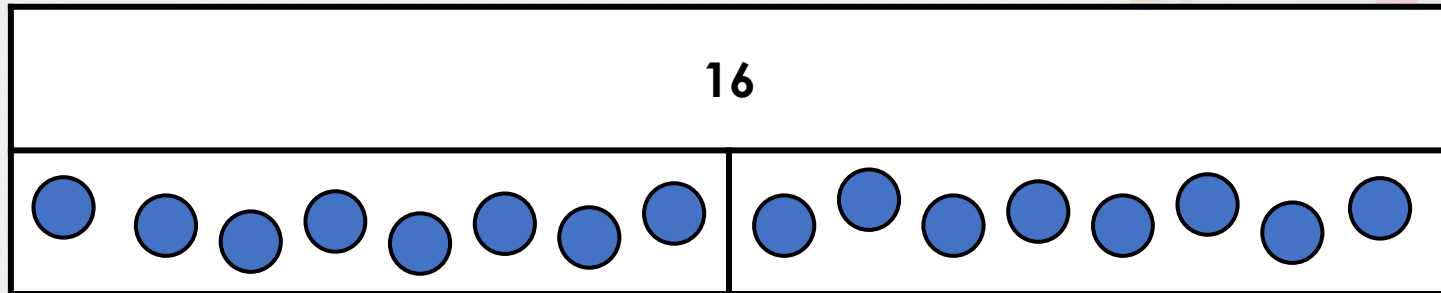
Use counters to complete the bar model.



The whole is . Half of is .

Varied Fluency 3

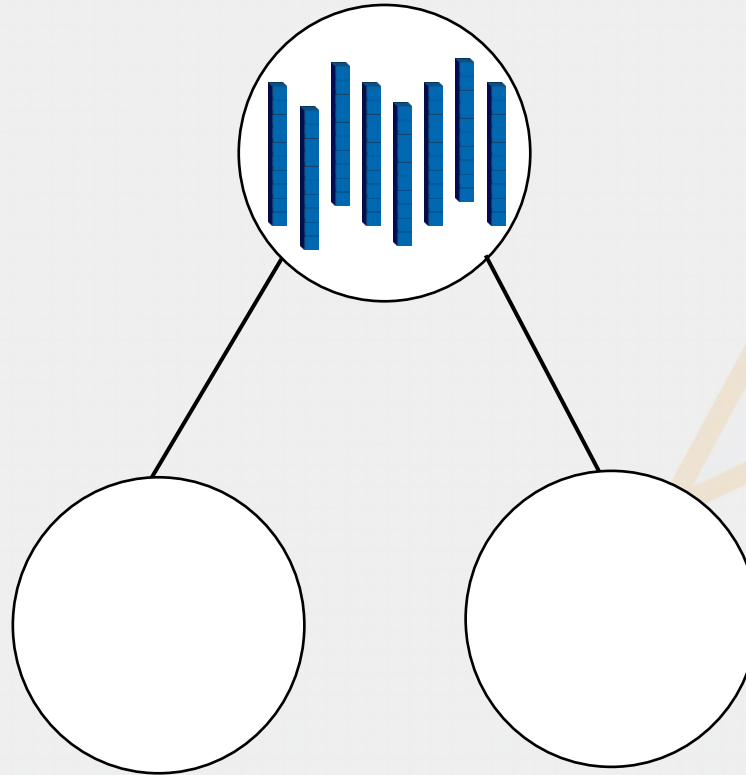
Use counters to complete the bar model.



The whole is . Half of is .

Varied Fluency 4

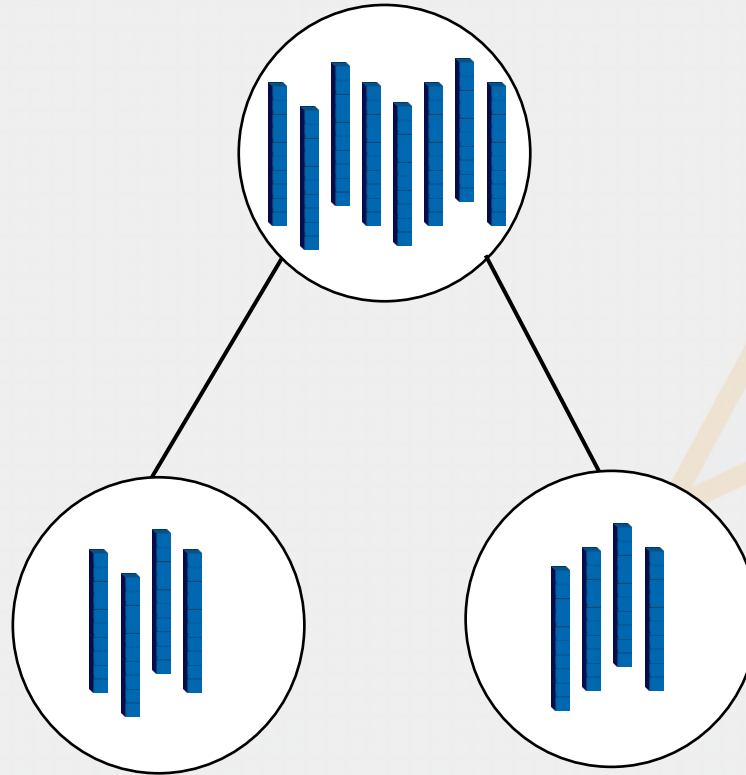
Complete the part-whole model.



$\frac{1}{2}$ of is .

Varied Fluency 4

Complete the part-whole model.



$$\frac{1}{2} \text{ of } \boxed{80} \text{ is } \boxed{40} .$$

Reasoning 1

Is Ahmed correct?



I had 12 marbles. I gave half of them to Shadi. Now we have 7 marbles each.



Explain why.

Reasoning 1

Is Ahmed correct?



I had 12 marbles. I gave half of them to Shadi. Now we have 7 marbles each.



Explain why.

Ahmed is incorrect because...

Reasoning 1

Is Ahmed correct?



I had 12 marbles. I gave half of them to Shadi. Now we have 7 marbles each.



Explain why.

Ahmed is incorrect because half of 12 is 6.

Problem Solving 1

Using the digit cards, complete the statements below.

18

22

11

9

A. $\frac{1}{2}$ of =

B. $\frac{1}{2}$ of =

Problem Solving 1

Using the digit cards, complete the statements below.

18

22

11

9

A. $\frac{1}{2}$ of $\boxed{18}$ = $\boxed{9}$

B. $\frac{1}{2}$ of $\boxed{22}$ = $\boxed{11}$

Reasoning 2

Henry has £12. He wants to buy a new school bag which costs half of his money. How much does the school bag cost?



Explain how you know.

Reasoning 2

Henry has £12. He wants to buy a new school bag which costs half of his money. How much does the school bag cost?



Explain how you know.

The school bag will cost £6 because...

Reasoning 2

Henry has £12. He wants to buy a new school bag which costs half of his money. How much does the school bag cost?



Explain how you know.

The school bag will cost £6 because half of £12 is £6.