

# Map Makers

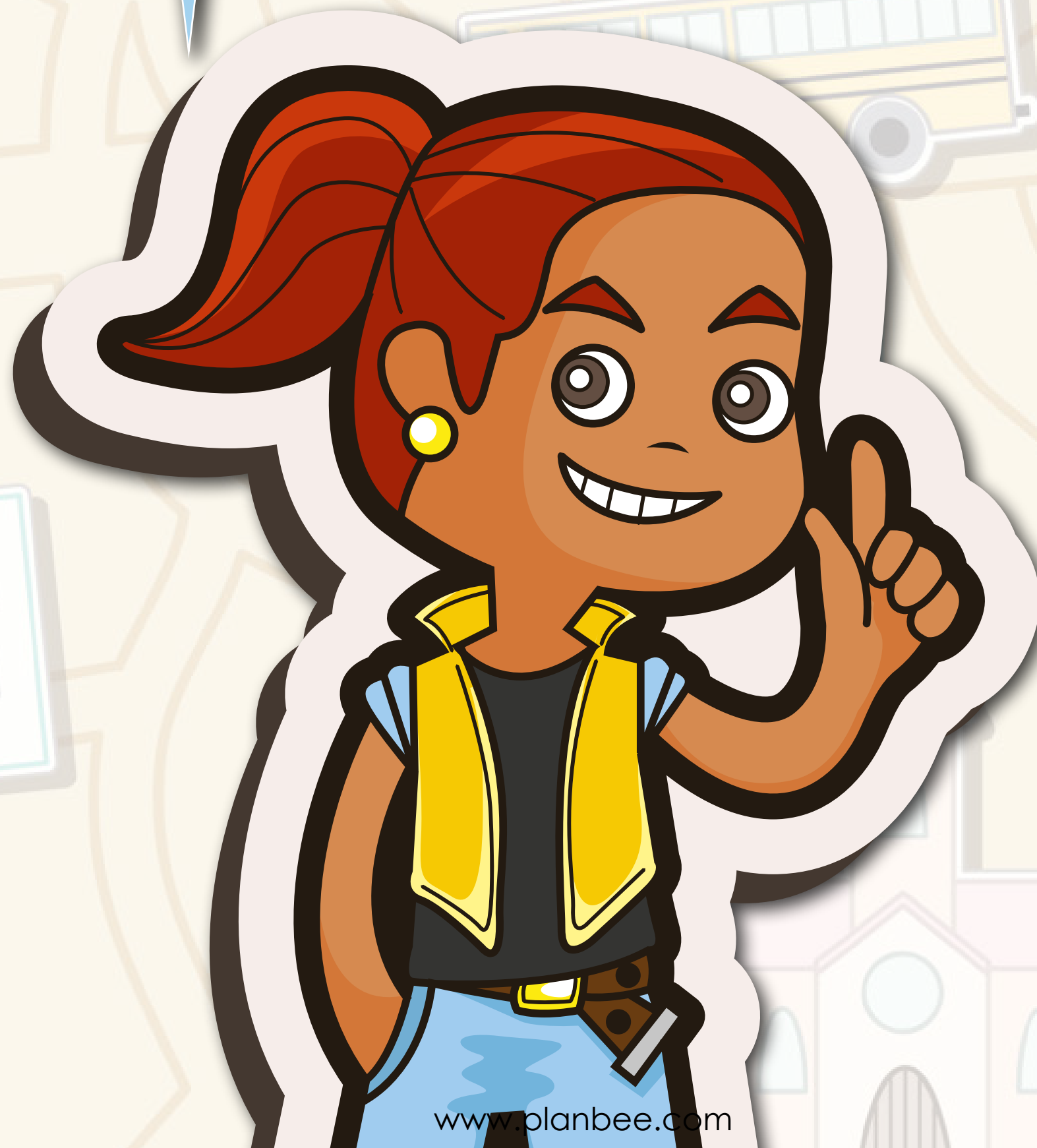
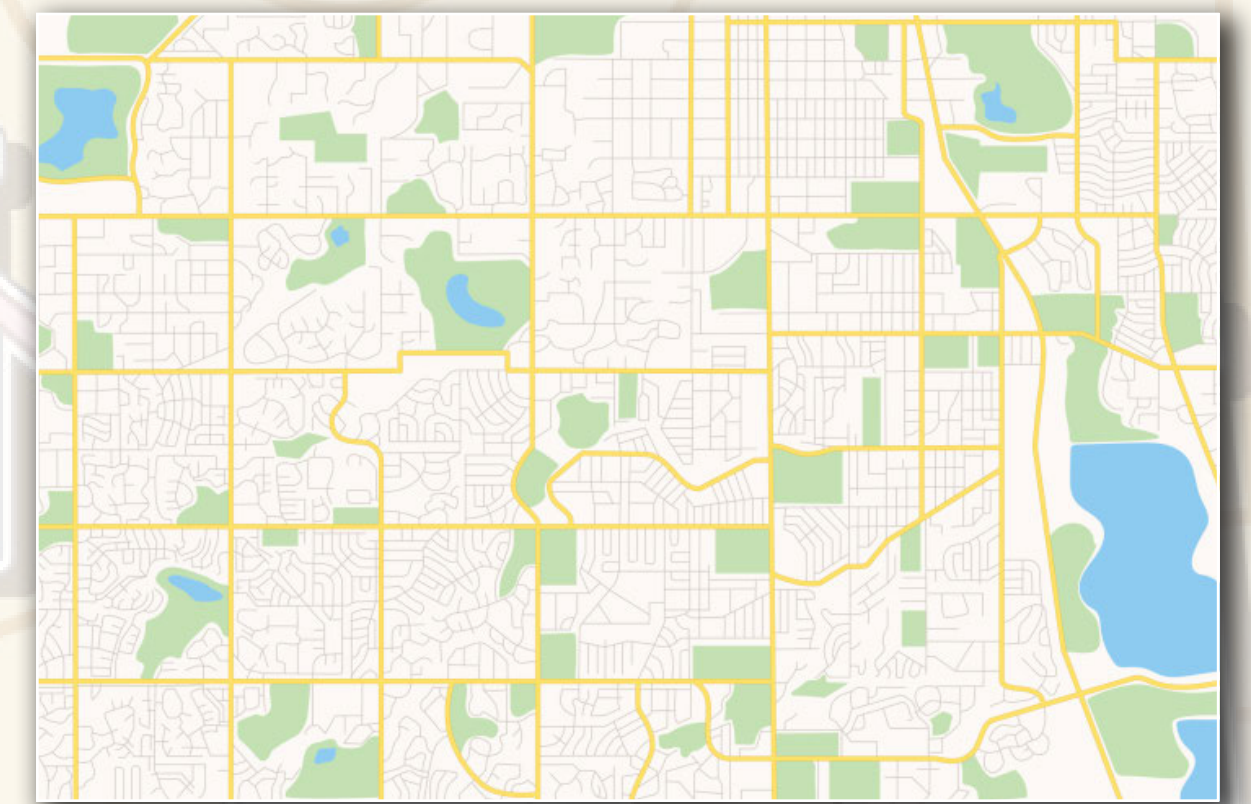
Today we will be...

Using aerial photographs and perspectives to recognise and create landmarks.

Next

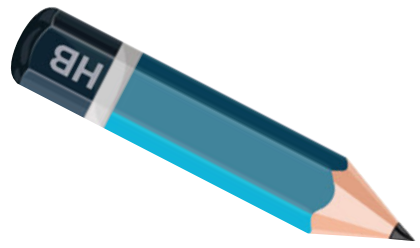


Take a look at these pictures.  
Can you remember what you  
learnt about maps in the  
previous lesson?



Back

Next



I wonder how maps are made.

Do you know how map makers gather all the information?



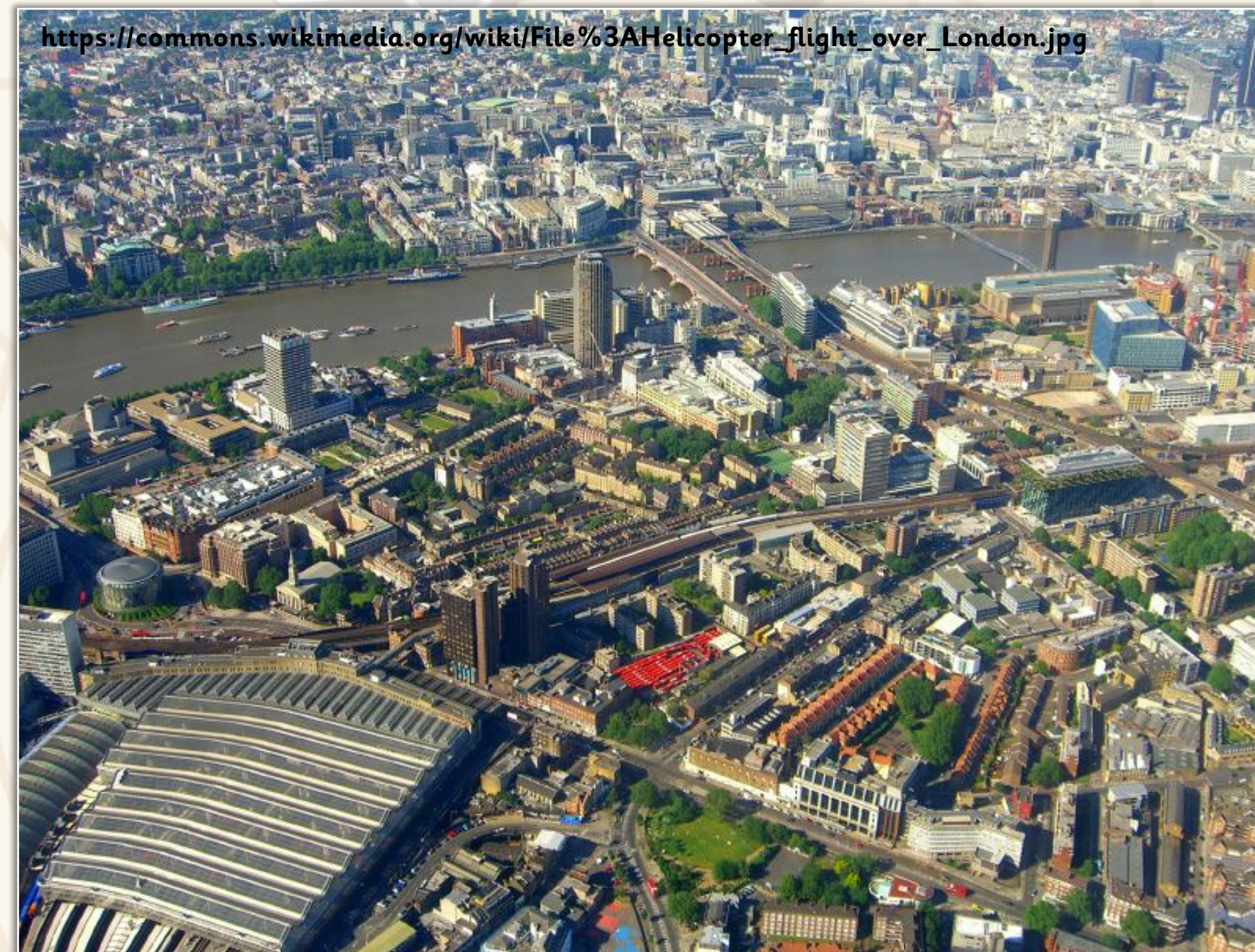
Back

Think, pair and share your ideas.

Next



Take a look at these photographs.  
What do you notice about them?

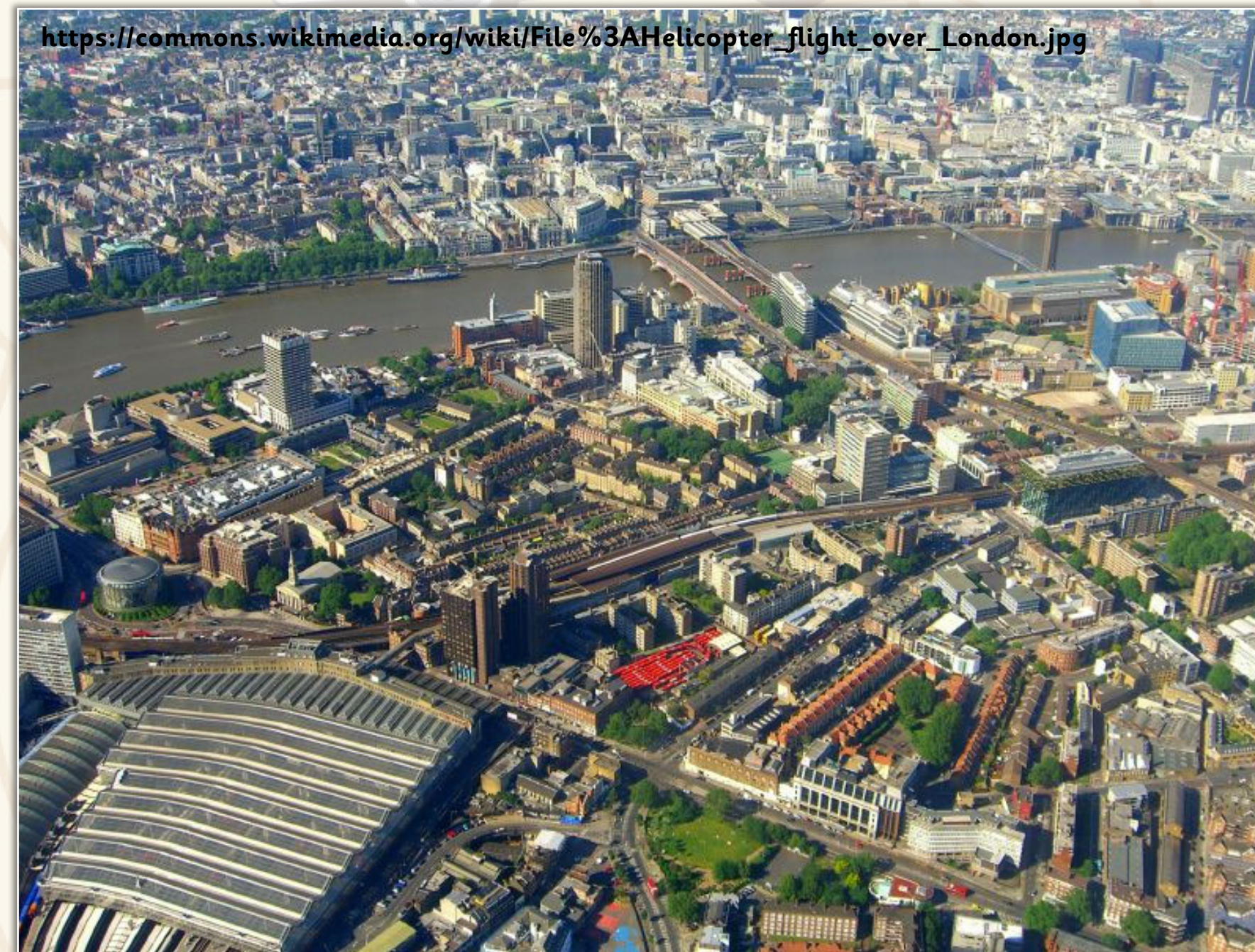


Back

Next



These photographs are all taken from above. They are called aerial photographs or aerial perspectives.



Back

Next

A person who draws or makes maps is called a cartographer.

They often use aerial photographs or satellite images to help them draw their maps. These pictures were taken by a camera attached to an aeroplane or helicopter.



Back

Can you guess where this aerial photograph was taken?

Next

Look at the following slides.

Can you guess where my friends are by looking at the aerial perspective?



Back

Next



Where am I?



Back

Next





This is Tower Bridge!  
This is the Tower of  
London!  
Can you spot them in  
the aerial photo?



Did you guess correctly?  
This aerial view is of the River  
Thames in London, UK.

Back

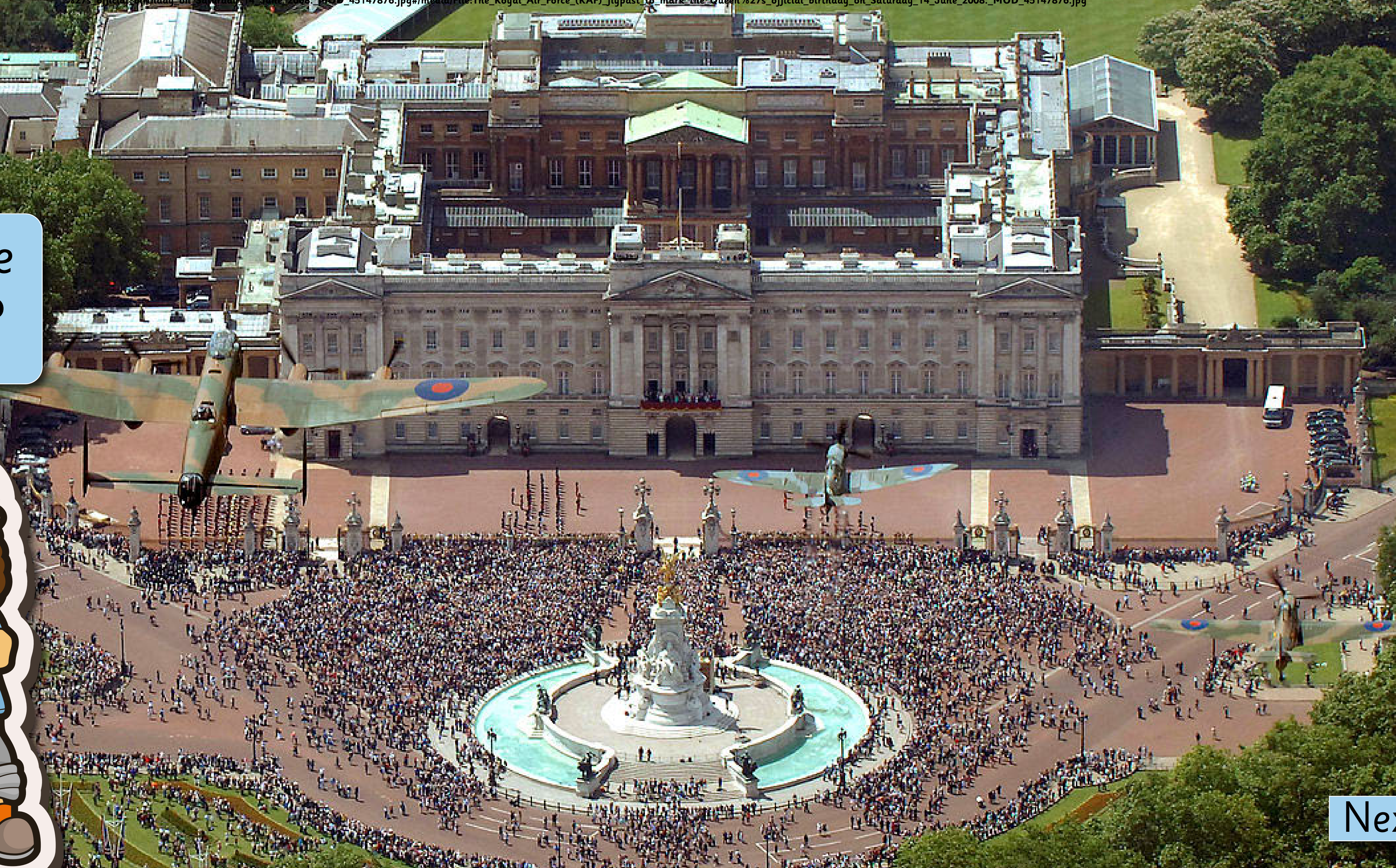
Next

Where am I?



Back

Next





This is Buckingham Palace! Can you spot the white and gold statue in the aerial photo?



Did you guess correctly? This aerial view is of Buckingham Palace, London, UK.

Back

Next



Where am I?

Back

Next



This is Edinburgh Castle!  
Can you spot it in the  
aerial photo?



Did you guess correctly?  
This aerial view is of  
Edinburgh in Scotland, UK.

Back

Next



Where  
am I?



←  
Back

Next  
→



Attribution: Gareth James from geograph.org.uk

This is the Millennium Stadium!  
Can you spot it in the aerial  
photo?



Did you guess  
correctly?  
This aerial view is of  
Cardiff in Wales, UK.

Back

Next

Where  
am I?



Back

Next





This is Belfast City Hall!  
Can you spot it in the  
aerial photo?

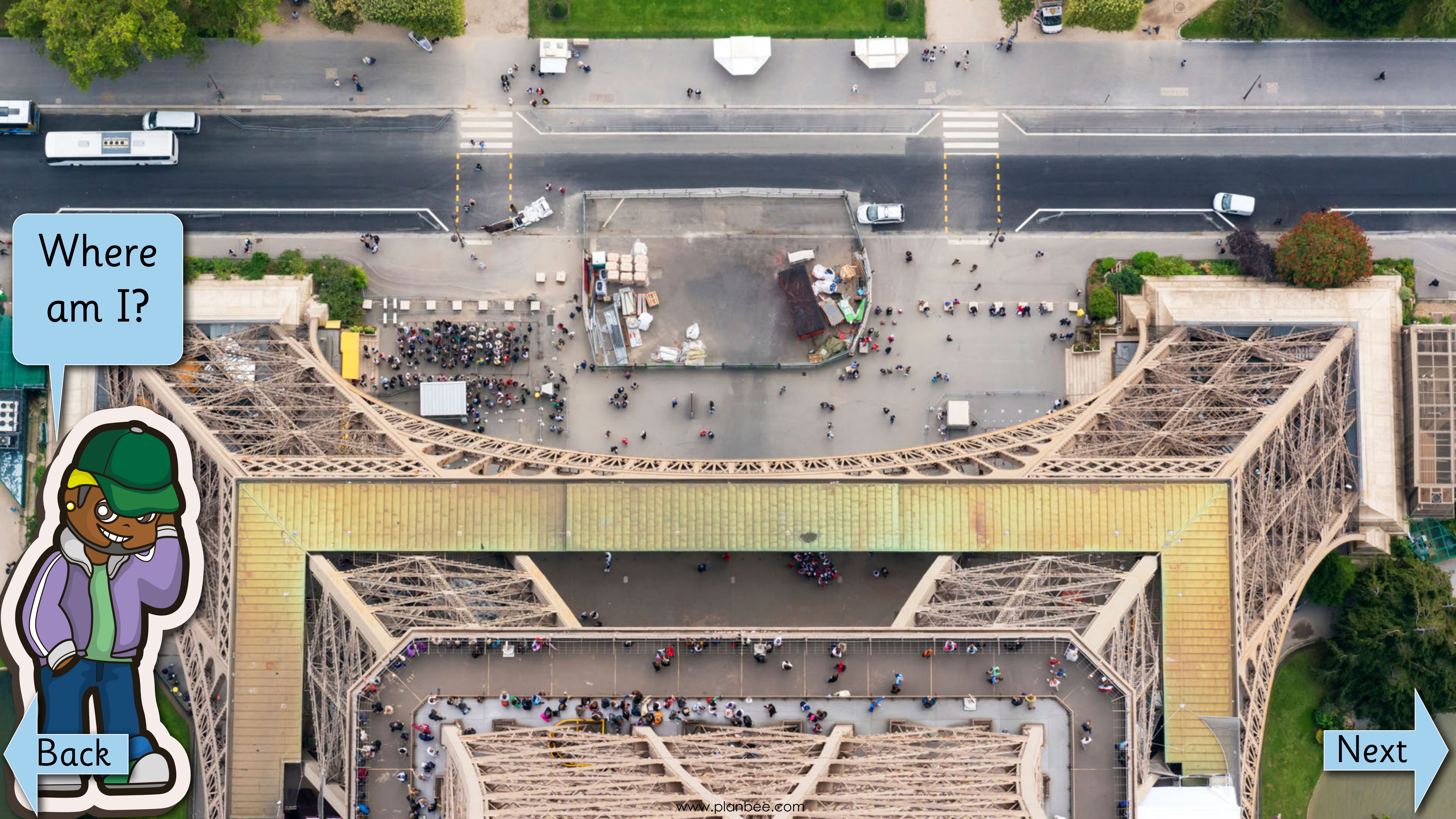


Did you guess  
correctly?  
This aerial view is of  
Belfast in Northern  
Ireland, UK.



Back

Next



Where am I?

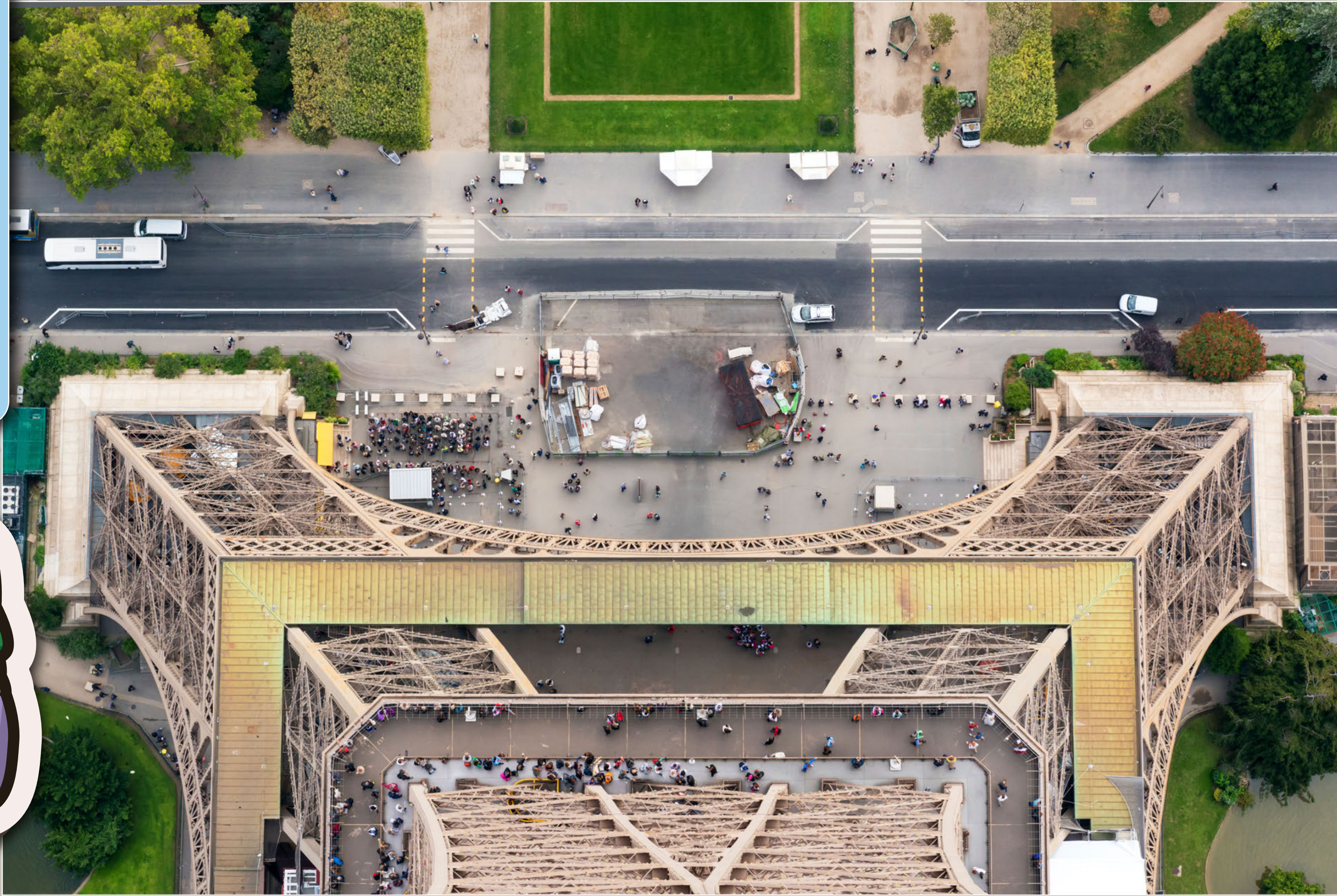


Back



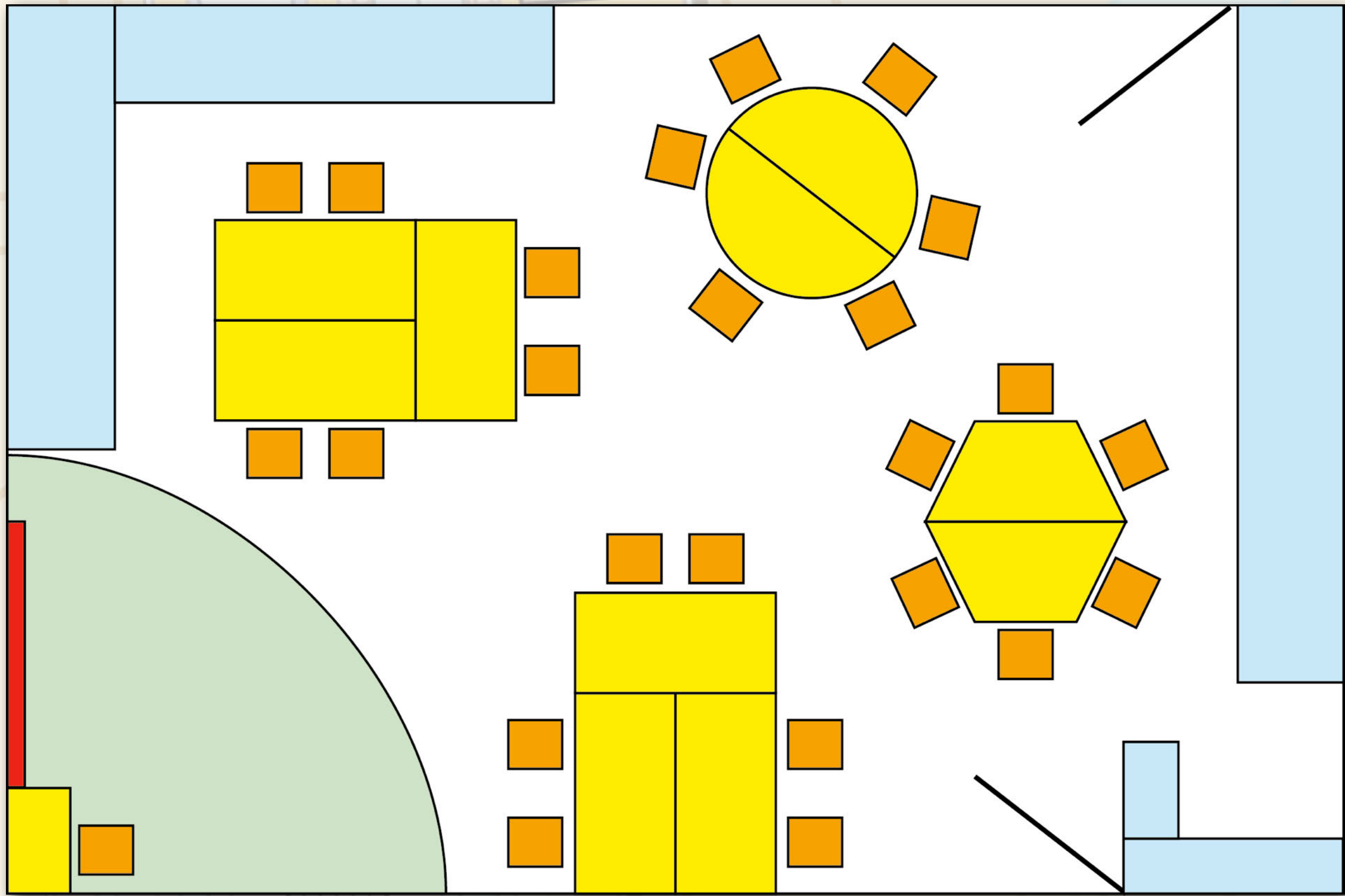
Next

Did you guess correctly? This aerial view is of the Eiffel Tower, Paris, France.



Back

Next

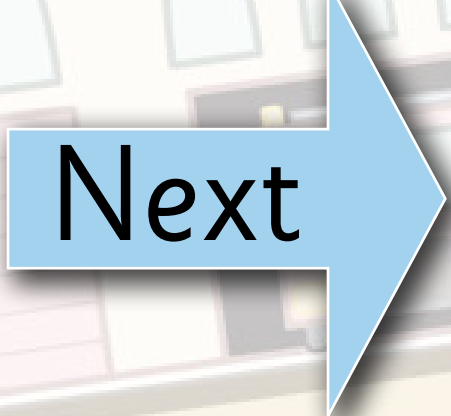
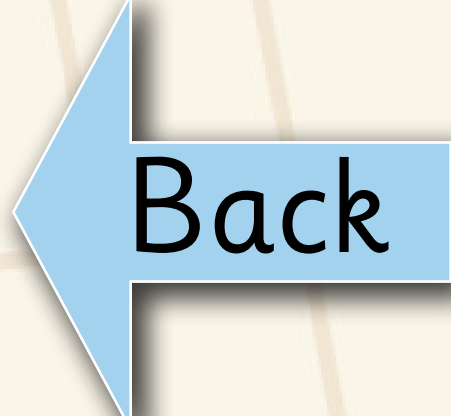


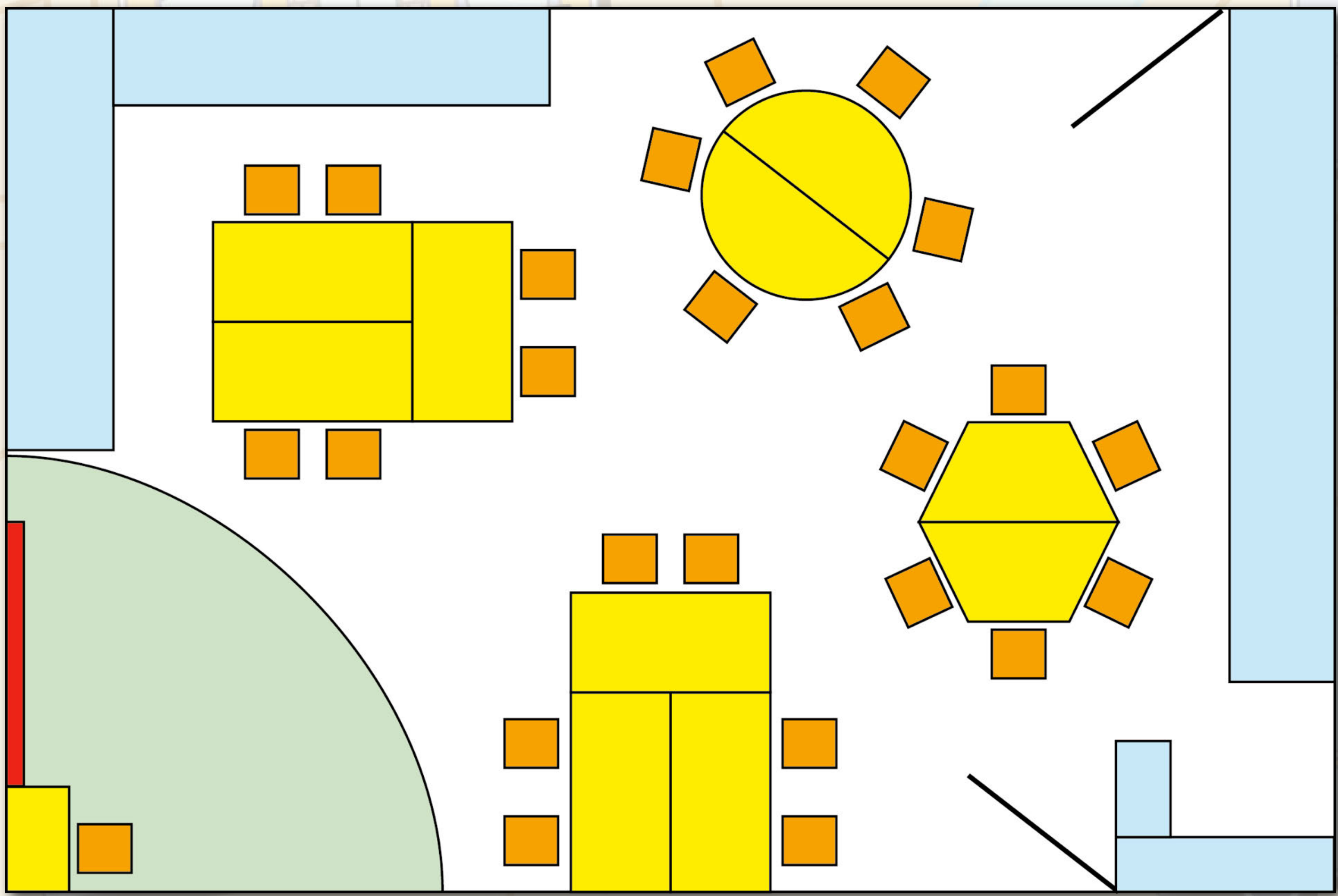
What do you notice about these drawings?

What shapes can you see?



Think, pair and share your ideas.





These are called plan views. A plan is a map of an area or room from above, so it is just like a drawing of an aerial view.

Plans can help us in lots of different ways such as when people are selling houses, doing interior design or showing a safety route.

They show us where furniture and fixed items are within the room, such as chairs, tables or staircases.



Have you ever seen a plan of a building?

Back

Next

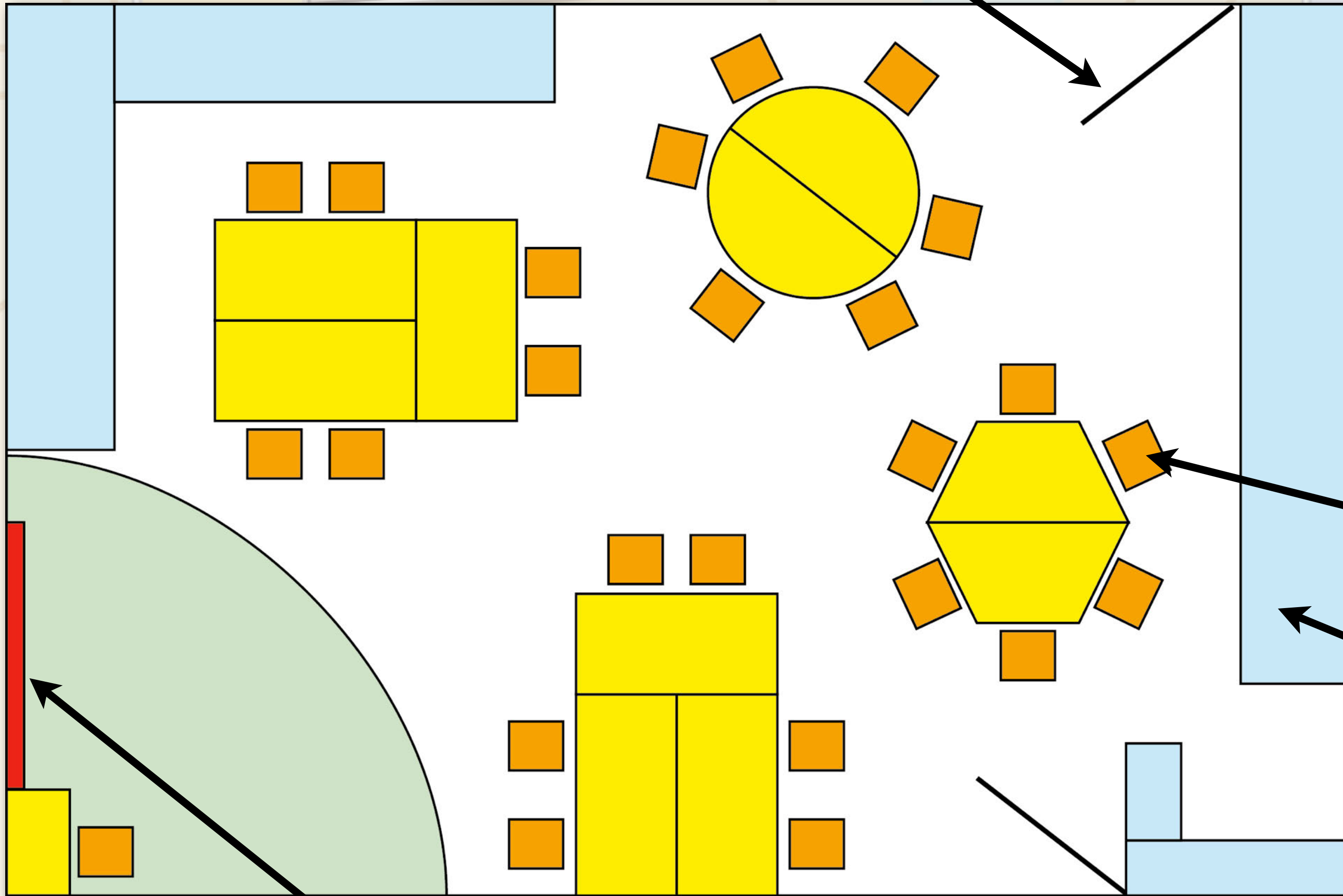
This line shows where the door is.

Plans or maps are kept simple and clear. They **don't** add lots of detail such as the pen pots, books or cushions.

They use simple shapes to show the items.

The chairs in this plan are orange squares.

The cupboards are blue rectangles.



The red rectangle is the board.

Can you spot the tables?

Can you spot two doors?

Back

Next

We have two new members of our class starting soon.  
Can you help them by drawing a plan of the classroom?

It would be really helpful to know the layout of the classroom!



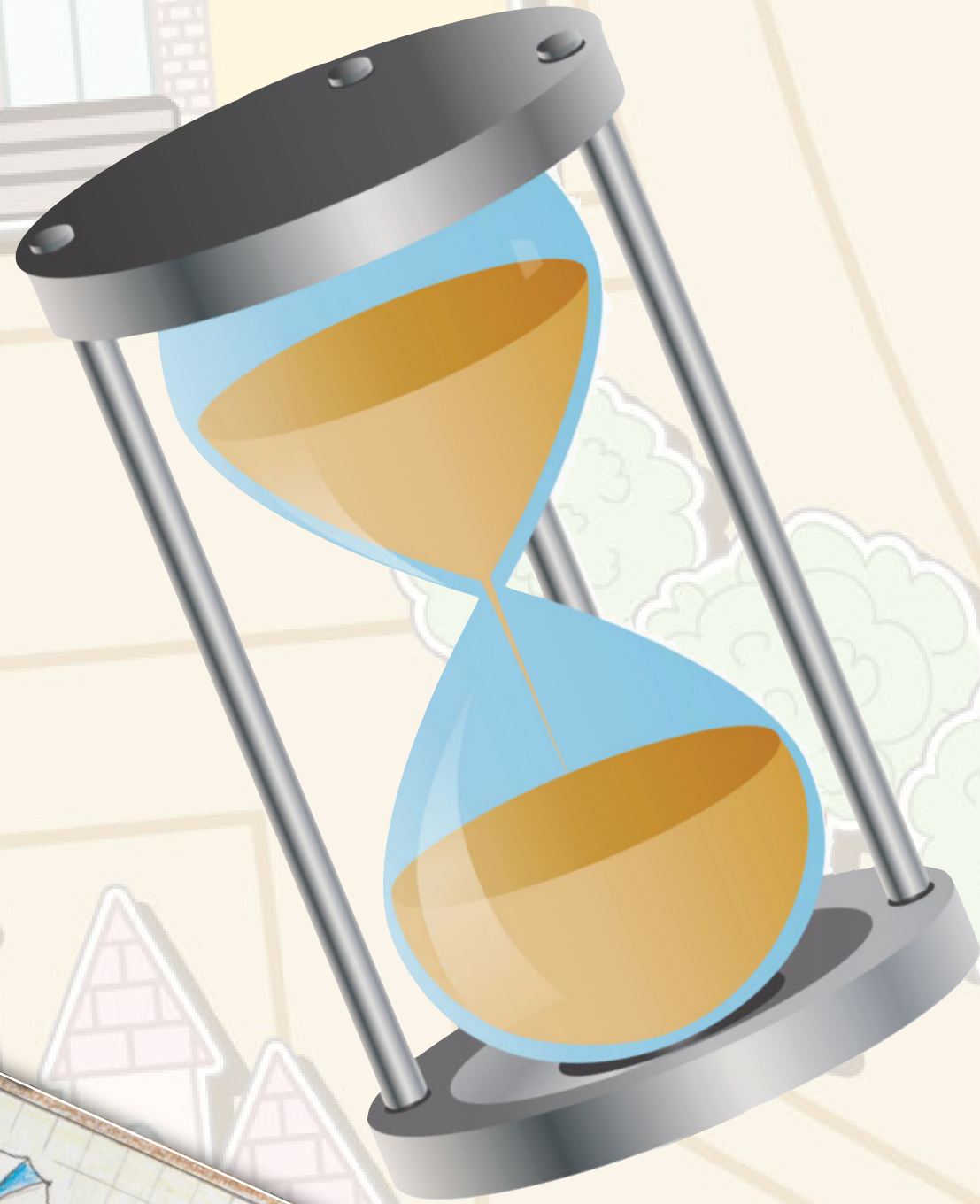
Don't forget to make sure it's an aerial view!



Back

Next

# Plenary



You have one minute to draw a plan of your bedroom.

Don't forget to keep it simple!

**Go!**



Back