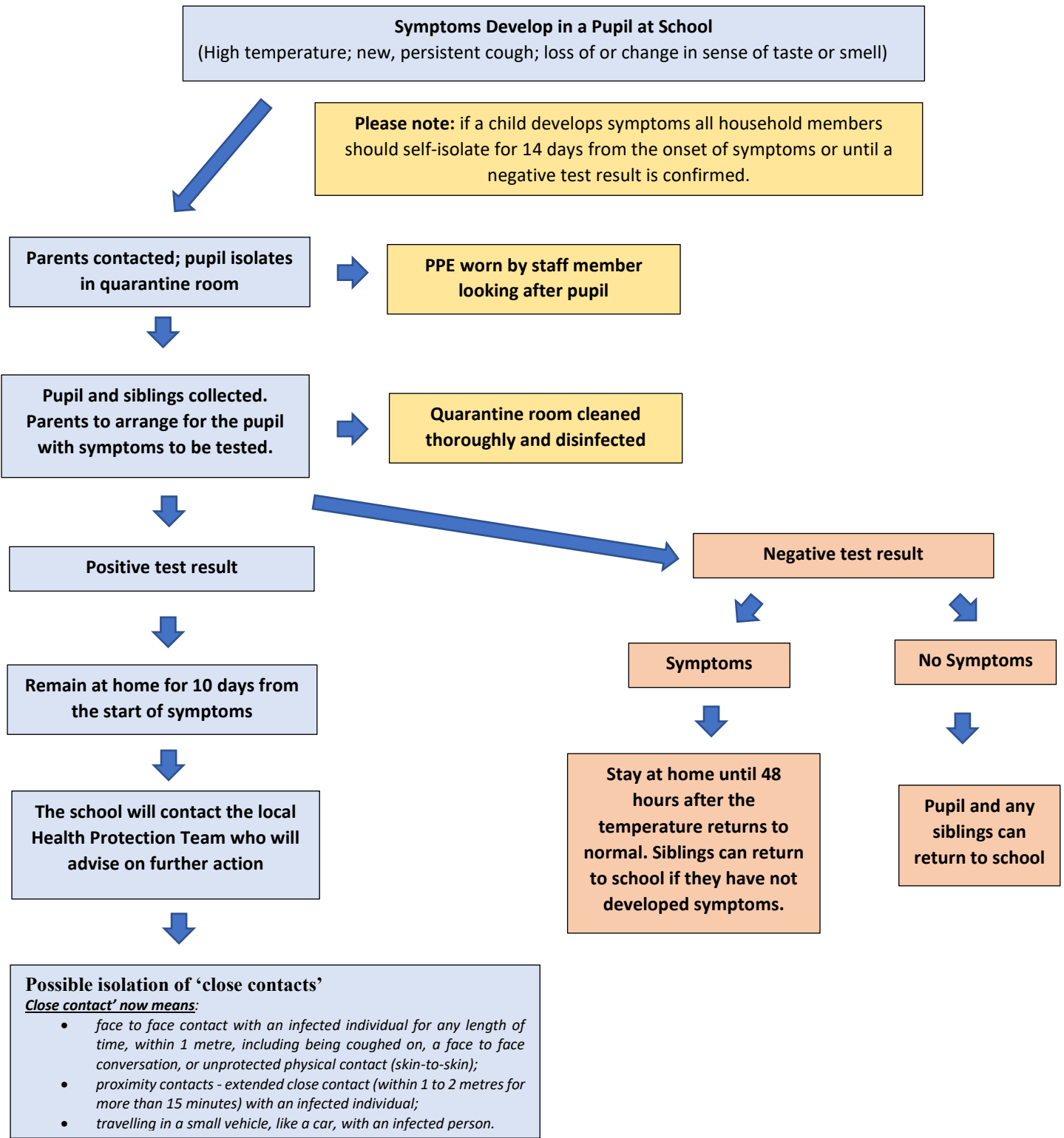


## COVID 19 Protocol Flowchart for pupils



**Return to School When Symptoms Have Gone**

Pupils can return to school after 10 days **only if their temperature has returned to within the normal range (if it is still above 37.8°C they should continue to isolate until 48 hrs after this symptom has stopped)**. If they still have a cough or loss of/change in sense of taste or smell, they can return after isolating for 10 days (these symptoms can stay for a longer period) if their temperature has returned to normal.