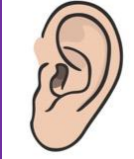


# To be able to follow simple rules and expectations

Date: WK 3

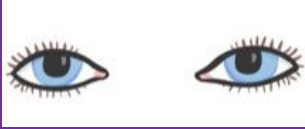
1. Good listening



2. Good sitting



3. Good looking



4. Wait for your turn to speak/ answer



5. Hands to your self



**Word bank**

## Introduction to new topic

Date: Wednesday



**Word bank**  
**Story**  
**Traditional**  
**tale**  
**Setting**  
**characters**



Virtue and values:  
Respect

This half term our topic is Let's Pretend. We will learn about different traditional tales. What is your fav story?



Our topic will be focussing on Traditional Tales

# An Introduction to Traditional Tales

## What is a Traditional Tale

# Traditional Tales

- Traditional tales are stories that have been told and retold for many years. These are stories that are known by everyone.
- There are often lots of different versions of the same story – sometimes they have different parts/ endings
- Traditional tales are also known as fairy stories or fairy tales.



# Traditional tales often begin with:

Once upon a time...

A long, long time ago...

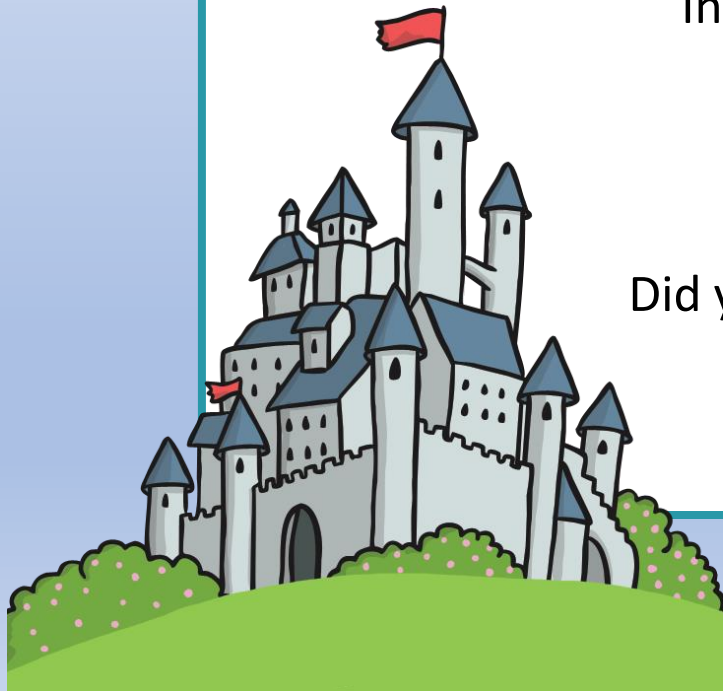
In a land far, far away...

In a faraway kingdom...

One sunny day...

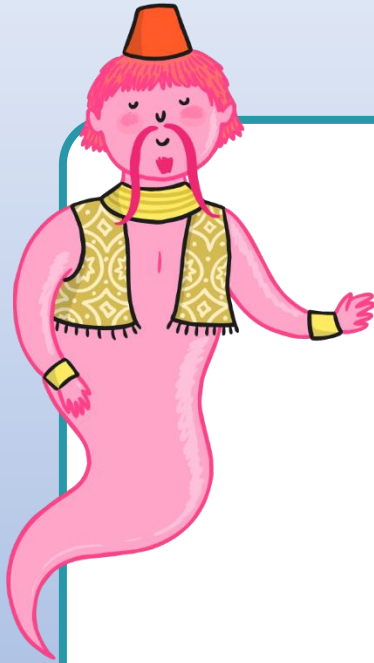
Did you ever hear the story of...

Early one morning...





# Common themes in traditional tales include...

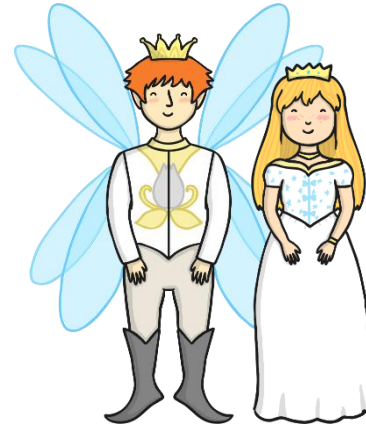


Magic

Love

Talking animals

Good against bad



A happy ending: "And they all lived happily ever after."



Can you name some traditional tales that you know of? (click to find answers/ prompts)



# Popular Traditional Tale Titles

Jack and the Beanstalk

Cinderella

Goldilocks and the Three Bears

The Emperor's New Clothes

The Little Red Hen

The Ugly Duckling

The Frog Prince

Hansel and Gretel

Rapunzel

Little Red Riding Hood

Pinocchio

The Three Billy Goats Gruff

The Three Little Pigs

Rumpelstiltskin

Sleeping Beauty

Beauty and the Beast



## Characters

- **Characters are the people/ creatures/ animals in the story.**
  - Traditional Tales will always have different characters.
    - Some good (hero/ heroine)
      - Some bad (villain)



Can you name any **characters** from a traditional tale? (click to find prompts or answers)



# Setting

A setting (the environment) is where the story takes place.



## **Popular Settings:**

Magical kingdom

A land far, far away

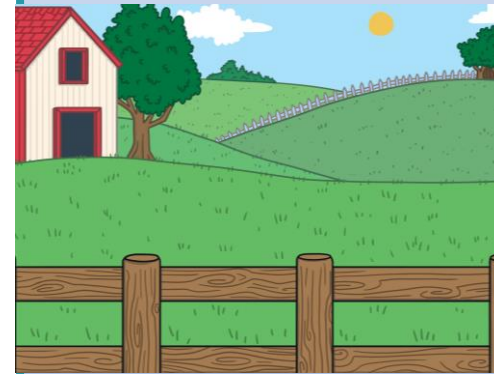
A cottage

In the woods

In a forest

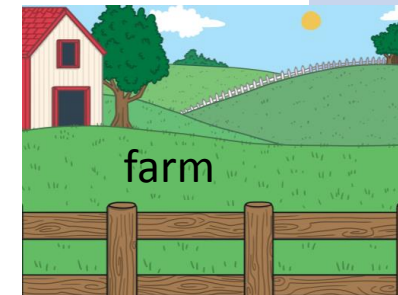
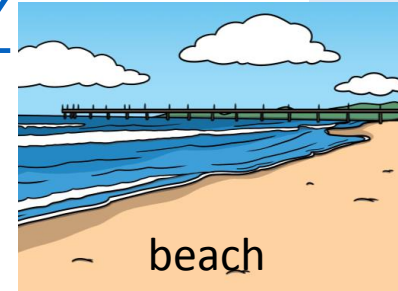
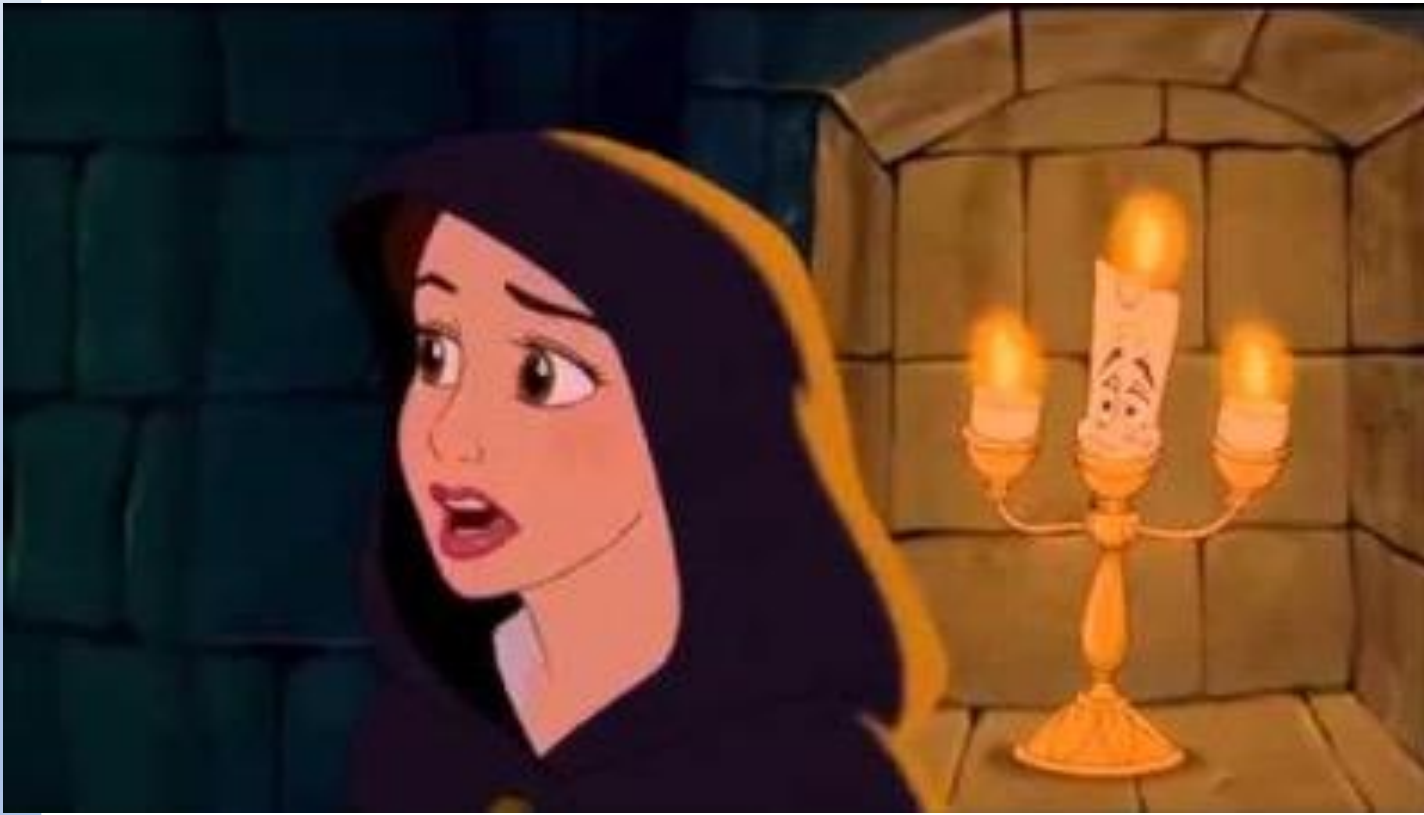
A castle

**What is your current setting?**



# Let's guess the setting!

Watch the clip and guess the setting from the below options <https://www.youtube.com/watch?v=izntFghOobY>



Extension: can you describe the setting (eg: the castle is SPOOKY)



# Let's guess the setting!

Watch the clip and guess the setting from the below options [https://www.youtube.com/watch?v=m\\_Gxjpu14Us](https://www.youtube.com/watch?v=m_Gxjpu14Us)



Haunted house



sea



castle



Extension: can you describe the setting (eg: the castle is SPOOKY)

# Let's guess the setting!

Watch the clip and guess the setting from the below options <https://www.youtube.com/watch?v=QLhYSw67pdg>



Haunted house



beach



forest



Extension: can you describe the setting (eg: the castle is SPOOKY)



# Let's guess the setting!

Watch the clip and guess the setting from the below options <https://www.youtube.com/watch?v=3QzT1sq6kCY>



Only watch the first few minutes- focus on the setting

house



Hill side/ Valley



© Can Stock Photo

forest



Extension: can you describe the setting (eg: the castle is SPOOKY)



Introduction to new topic



Date: Wednesday

**Word bank**  
**Setting**  
**Hansel and**  
**Gretel**



Virtue and values:  
Respect

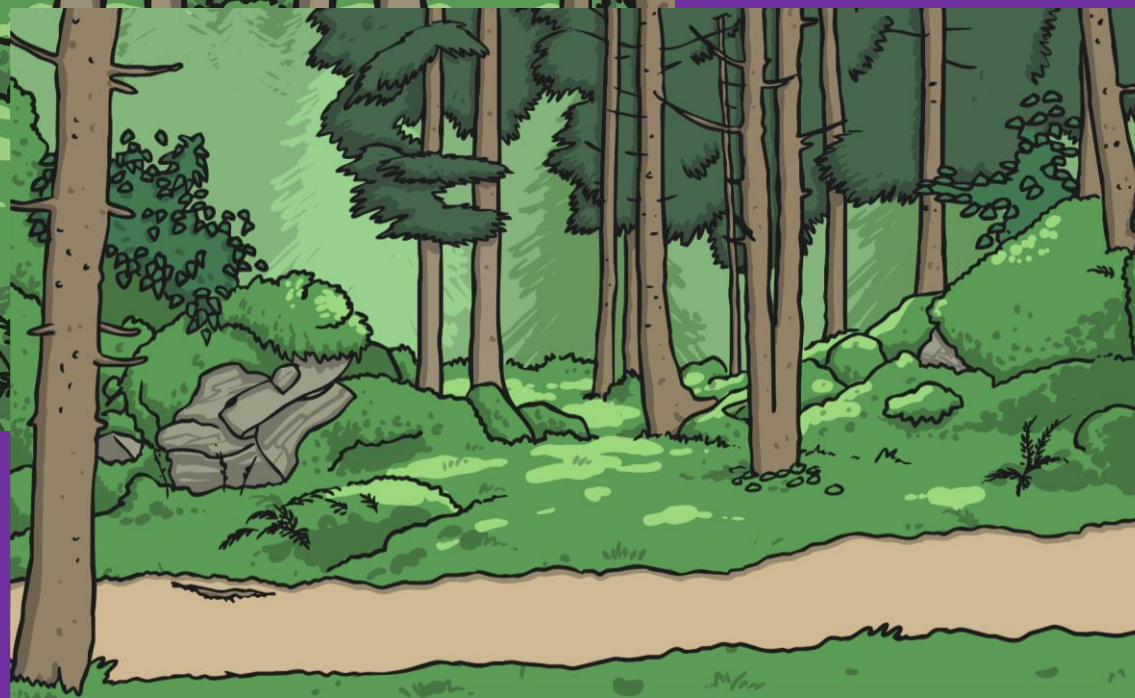
What story are we focussing on this week and next week?



The  
forest

Word bank  
**Setting**  
**Hansel and**  
**Gretel**  
**forest**

Virtue and  
values:  
Critical thinking



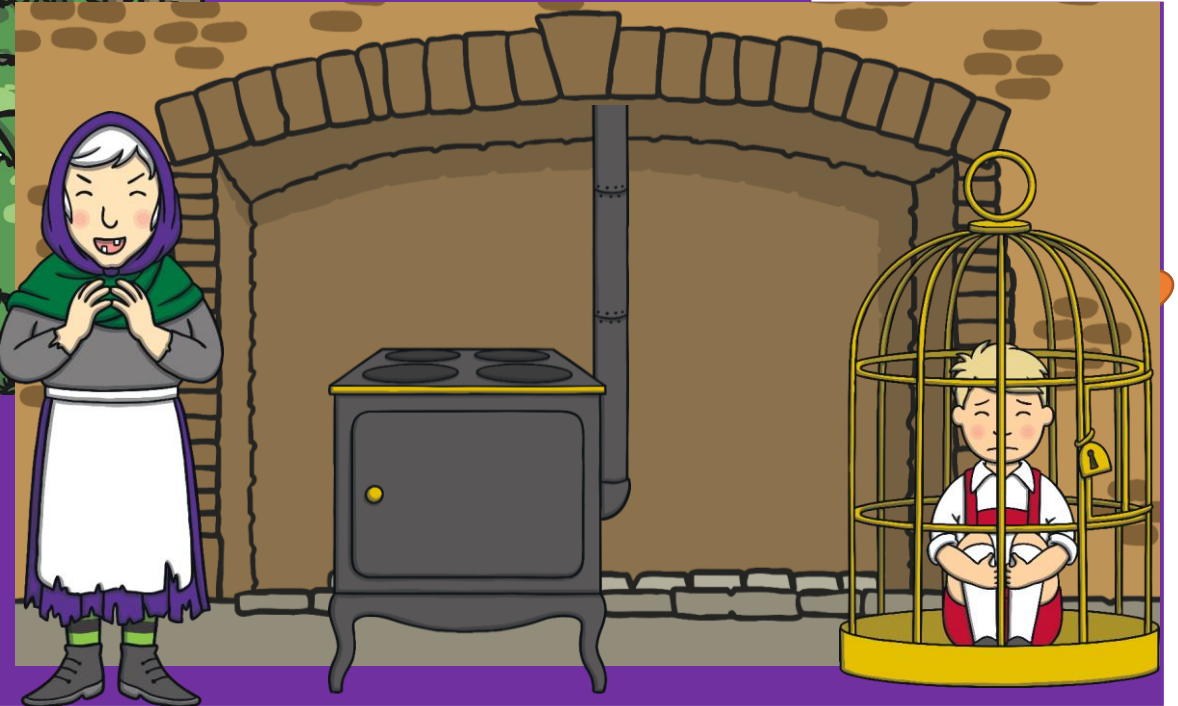
What is the setting for Hansel & Gretel? Is it the same setting throughout the story?





The  
gingerbread  
house

Word bank  
**Setting**  
**Hansel and**  
**Gretel**  
**forest**



When H & G come to this scene.. What does the setting change to?



LO: identifying and describing story settings.

Date: Wednesday

We will be focussing on story settings and making links to Understanding of the World, where we will make links to different environments. We will also begin to use describing words (adjectives) to describe the settings.

- Spend some time thinking about the setting in your stories/ bug club stories/ movies or programmes that you watch
- create your own story setting for Hansel and Gretel – use different media and materials to do this

LO: Listen and join with stories  
LO: To recall main events from a story  
LO: To use role play to act out a story



Virtue and values:  
Respect  
Critical thinking  
Reasoning  
resourcefulness

## Hansel and Gretel



gingerbread  
house



Hansel



Gretel



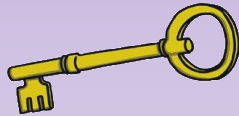
woodcutter



witch



birds



key



treasure chest



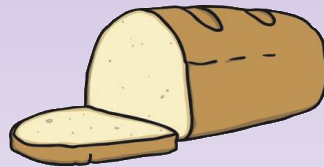
cage



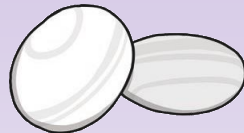
stepmother



crumbs



bread



pebbles



oven



forest

Go over the key vocabulary with your adult/ sibling. Think of an action for each word so we can use it on our story map

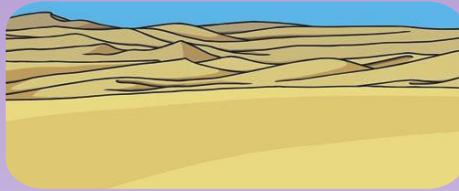
# Settings Adjectives



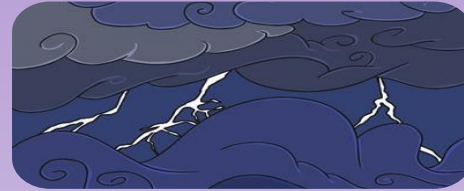
warm / sunny / pleasant



cold / snowy / wintry



hot / humid / sticky



windy / gusty / stormy



spooky / haunted / creepy



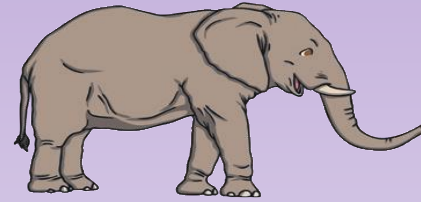
scary / terrifying



restful / peaceful



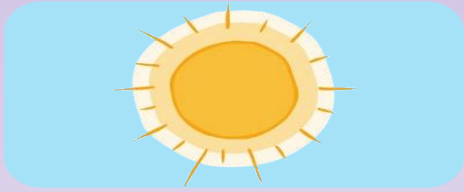
crowded / busy



enormous / huge



tiny / miniscule



dazzling / bright



gloomy / dark



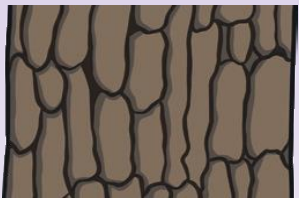
quiet / peaceful



noisy / loud



smooth



rough



dirty



clean



tidy / neat



untidy / messy

Go over the key vocabulary with your adult/ sibling.