



[Child Protection and Safeguarding Policy and Procedure]

[AVANTI SCHOOLS TRUST]

This policy is in force until further notice from:	July 2021
This policy must be reviewed by:	July 2022
Policy Author(s):	Andrea Kahn
Date policy reviewed by Education Director:	July 2021
Location of publication of policy:	Trust Website
Under the Trust's Scheme of Delegation this policy must be approved by [NAME OF COMMITTEE OR BOARD]. Such approval was given on:	Learning, Teaching and Standards Committee 19.07.21
[Only if policy applicable to ASL] The Avanti Services Limited Board adopted this policy on:	
[Only if policy applicable to GL] The Govinda's Limited Board adopted this Policy on:	

SAFEGUARDING AND CHILD PROTECTION POLICY AND PROCEDURE

Contents

1. Introduction and legislative framework
2. Key contacts
3. School's Safeguarding Mission Statement
4. Responsibilities
 - Governing Body
 - Designated Safeguarding Lead
 - What all staff should look out for
 - Thresholds for intervention
5. Procedures
 - General
 - When concerned about a child
 - Dealing with a disclosure
 - Confidentiality and communication with parents
 - Record keeping
 - Transfer of files/records
6. Information sharing
7. Safer Workforce
 - Safer recruitment
 - Safer working practice
 - Managing allegations against staff and volunteers
8. Physical Intervention / Positive Intervention
9. Whistleblowing
10. Supporting vulnerable children
11. On-line Safety
12. Peer on Peer Abuse
 - Bullying
 - Child on child sexual violence and sexual harassment
13. Further Information – Safeguarding Children in Specific Circumstances.

1. Children and the court system
2. Children with Disabilities or Special Educational Needs
3. Children with a family member in prison
4. Child Sexual Exploitation
5. Child criminal exploitation, gangs and youth violence
6. Domestic abuse
7. Female Genital Mutilation
8. Forced Marriage
9. Homelessness
10. Homestay – children staying with host families
11. So called ‘honour-based violence’
12. Missing education or missing from home and care
13. Preventing Radicalisation
14. Private fostering
15. Substance Misuse
16. Mental Health
17. Trafficking and Modern-Day Slavery
18. Young carers

Appendix 1 Role Description for Designated Safeguarding Lead

Appendix 2 Template for Record of Concern

Appendix 3 Types of abuse and neglect – definitions

Appendix 4 Actions where there are concerns about a child

Appendix 5 Managing Allegations Against a Member of Staff

Appendix 6 MAT Safeguarding Structure

Key Contacts

Safeguarding and Promoting the Welfare of Children at Avanti House Secondary School:

Role	Name	Telephone	Email
Designated Lead Person for Safeguarding (DSL)	Andrea Kahn	0208 249 6830	Andrea.Kahn@avanti.org.uk
Deputy DSL (S)	Paula Soiza	0208 249 6830	Paula.Soiza@avanti.org.uk
Designated Lead SSC Member for Safeguarding	Anita Gohil-Thorp		
Lead for Looked After Children	Andrea Kahn	0208 249 6830	Andrea.Kahn@avanti.org.uk
Lead for On-line Safety	Andrea Kahn And Sanjay Parekh	0208 249 6830	Andrea.Kahn@avanti.org.uk
Principal(for concerns/allegations about staff Chair of SSC)	Simon Arnell	0208 249 6830	Simon.Arnell@avanti.org.uk

Key local contacts for safeguarding children

Social Care & Multi-agency Safeguarding Hub (MASH)	Harrow 'Golden Number': 0208 901 2960 Emergency Duty Team: weekends, bank holidays and between 5pm-9am during the week:
Police	101 or for immediate emergency: 999
FGM - Mandatory reporting	Police on 101
Local Authority Designated Officer for Allegations against staff (LADO)	Initial referrals via MASH/Golden Number above. (For on-going cases:
Children and Young People with Disabilities 0-25 years	
Local multi-agency procedures (& links to	

Pan London procedures), guidance and Training:	
NSPCC	0800 800 5000
Childline	0800 1111
Government's Whistleblowing Service via NSPCC Report Line	0800 028 0285
Forced Marriage Unit	<p>Tel: 020 7008 0151</p> <p>From overseas: +44 (0)20 7008 0151 (Mon – Fri 9am-5pm)</p> <p>Out of hours: 020 7008 1500 (ask for the Global Response Centre)</p> <p>Email: fmufco@fco.gov.uk</p>
Support and Advice about Extremism DfE helpline (non-emergency advice for staff and governors)	<p>Tel: 020 7340 7264</p> <p>Email: counterextremism@education.gsi.gov.uk</p>
<u>Disclosure and Barring Service</u>	<p>Tel: 03000 200 190</p> <p>Email: customerservices@db.gov.uk</p>
<u>Teaching Regulation Authority</u>	<p>Tel: 020 7593 5393</p> <p>Email: misconduct.teacher@education.gov.uk</p>

1. The Avanti Way Safeguarding Statement of Intent, Vision and Compliance

Avanti Schools Trust exists to help each person become a well-rounded human being through intellectual, moral and spiritual growth, and to make the world a better place.

Our actions and our intentions as school leaders are guided by our core principles of Academic Excellence, Character Formation and (Spiritual Insight in our faith schools).

If pupils are to achieve academically, socially and emotionally to the best of their ability, it is essential that their basic needs for safety, protection and inclusion are successfully and confidently addressed.

Avanti's virtues of respect, self-discipline, courage, integrity, empathy and gratitude are tangible throughout school life, where leadership at all levels understand the importance of modelling exemplary behaviour and attitudes. These characteristics influences our pupils to also model and grow up to behave appropriately.

Avanti Schools Trust recognises our moral and statutory responsibility to safeguard and promote the welfare of all pupils. We endeavour to provide a safe and welcoming environment where children and young people are respected and valued. We are alert to the signs of abuse and neglect and follow our procedures to ensure that children receive effective support, protection and justice. Child protection forms part of the school's safeguarding responsibilities and is taken very seriously.

Equality Statement

Some children and young people have an increased risk of abuse. Additional barriers can exist for some with respect to recognising and disclosing it.

Avanti Schools Trust are committed to anti – discriminatory practice and recognise children's diverse circumstances. We ensure that all children have the same protection, regardless of any barriers they may face.

2. Introduction – legislative framework

Avanti Schools Trust is fully committed to meeting its responsibility to protect and safeguard the welfare of children and young people in its care. We recognise the important part we have to play in identifying children and young people at risk of abuse and neglect and in securing appropriate support for them and their families.

Safeguarding and promoting the welfare of children is defined in the Department for Education's (DfE) statutory guidance '[Keeping Children Safe in Education](#)' as:

- Protecting children from maltreatment
- Preventing impairment of children's health or development
- Ensuring that children grow up in circumstances consistent with the provision of safe and effective care
- Taking action to enable all children to have the best outcomes

'Children' includes everyone under the age of 18.

1.1 'A child centred and coordinated approach to safeguarding'

The child's best interests will remain our paramount focus and this is best achieved by Avanti Schools Trust schools working within the context of the following statutory duties and government guidance which require effective inter-agency cooperation:

Section 175 of the [Education Act 2002](#)) places a statutory duty on the governing bodies (School Stakeholder Committees) to have policies and procedures in place that safeguard and promote the welfare of children who are pupils of the school.

[Section 11 Children Act 2004](#) sets out the arrangements that schools and other specified settings must make to safeguard and promote the welfare of children. These arrangements are outlined within our policy and procedure so that all staff, families and the local community are provided with a clear understanding of our school's processes and commitment to safeguard and promote the welfare of children and young people in our care.

[Children and Social Work Act 2017 brought about a new partnership arrangement to safeguard children. Each school in the Avanti Schools Trust works closely and collaboratively with their respective local authority in order to promote a 'Think Whole Family' approach to safeguarding. As a relevant agency Avanti Schools Trust is committed to fulfilling its statutory duty to engage with these arrangements.](#)

All staff in Avanti Schools Trust Schools which includes Principals, teachers, non-teaching/support staff, governing bodies (SSC's), proprietors and management committees should read part 1 of statutory guidance [Keeping Children Safe in Education \(DfE September 2021\)](#) (KCSIE), which sets out the legal duties you must follow to safeguard and promote the welfare of children and young people under the age of 18 in our schools.

KCSIE incorporates a range of related responsibilities for schools and statutory duties introduced to protect children and young people, including Female Genital Mutilation and Radicalisation.

Our policy and procedure is written in accordance with KCSIE and similarly should be read by all staff. Our policy and procedure also reflects government advice [What to do if you're worried a child is being abused – Advice for practitioners](#)

It is also expected that all staff are made aware of related internal school policies including: The Pupil Behaviour policy and The Staff Behaviour Policy (code of conduct).

3. Avanti Schools Trust Safeguarding Mission Statement

All staff at Avanti Schools Trust schools understand that safeguarding children is everyone's responsibility.

We will:

- provide a caring, positive, safe and stimulating environment that promotes the social, physical and moral development of the individual child
- always act in the best interests of the child, taking their wishes and feelings into account

- ensure that all staff and volunteers are recruited using robust ‘Safer Recruitment’ processes (Avanti Schools Trust Safer Recruitment Procedures)
- aim to identify concerns early and prevent concerns from escalating. This includes identifying emerging problems, liaising with the Designated Safeguarding Lead (DSL), sharing information with other professionals to support early identification and assessment and, in some cases, providing the lead professional in undertaking an early help assessment
- establish and maintain an environment where children feel respected, safe, and are encouraged to talk and be listened to when they have a worry or concern
- require any member of staff who has a concern about a child’s welfare to follow the referral process set out in this document
- where there is a safeguarding concern, take the child’s wishes and feelings into account at all stages of the process of intervention
- ensure that children who have been abused or neglected will be supported in line with a child protection plan
- work with parents/carers to build a supportive relationship and be clear about our Safeguarding and Child Protection Procedures and in particular, when we may need to refer concerns to other agencies
- include opportunities across the curriculum, including PSHE and IT for children to be taught about safeguarding and to develop the skills they need to recognise danger and know where to seek help
- maintain an attitude of “it could happen here” where safeguarding is concerned

3.1 Why is this important to schools in the Avanti Schools Trust

It is important for children to receive the right help at the right time to address risks and prevent issues escalating. Research and serious case review have repeatedly shown the dangers of failing to take effective action. Examples of poor practice include:

- failing to act on and refer the early signs of abuse and neglect;
- poor record keeping;
- failing to listen to the views of the child;
- failing to re-assess concerns when situations do not improve;
- not sharing information or sharing information too slowly; and
- a lack of challenge to those who appear not to be taking action

3.2 Contextual Safeguarding

We recognise that some safeguarding incidents or behaviours are associated with wider environmental factors which relate to children and young peoples’ neighbourhoods and/or online communications. Contextual Safeguarding expands the objectives of child protection systems in recognition that young people are vulnerable to abuse in a range of social contexts.

4. Responsibilities

Governance & Accountability in relation to Safeguarding

The Board of Directors is the legal Governing Body of every Avanti school and has ultimate accountability and legal responsibility for all Avanti Schools, including statutory responsibilities of governors and accountability for the quality of educational provision and school effectiveness. The Board has appointed School Stakeholder Committees (SSCs) for each Avanti School. SSCs provide perspectives from various stakeholder groups (staff, parents and wider community) on a day to day functioning of the school in order to support the school's work. Currently, in the South West Hub schools a temporary committee called a Governance Board is in operation. Governing Boards, School Stakeholder Committee and proprietors should ensure that the Trust and each school designates an appropriate senior member of staff to take lead responsibility for child protection. This person should have the status and authority within the school to carry out the duties of the post including committing resources and, where appropriate, supporting or directing other staff. They must also have regard to this guidance to ensure that the policies, procedures and training in their schools or colleges are effective and comply with the law at all times (DfE KCSIE 2021).

Senior MAT officers (Education Director and MAT Lead for SEND and Safeguarding act as the DSL for the central team. A designated member of the Board of Trustees provides strategic oversight of all Child Protection and Safeguarding procedures. They provide strategic support and will delegate to the Principal and Designated Safeguarding Lead in each school to ensure that this policy is followed. Training on these responsibilities is provided by the Avanti School Trust and respective approved Local Children Local Safeguarding Children Board LSCB annually.

Any serious issues in any of the schools within the Avanti Schools Trust (allegations against a staff member, serious H&S concern or incident) should be shared with the Education Director and the MAT Lead for SEND and Safeguarding.

The MAT Lead for SEND and Safeguarding will provide strategic and operational support for all school DSLs and will coordinate and when appropriate lead a planned programme of training and development.

Online safeguarding training is also implemented during the course of the year to support updates. Each school has its own Designated Safeguarding Lead and at least one Deputy Designated Safeguarding Lead. They will hold network meetings each term. Minutes will be disseminated to the Director of Education and Primary Head of School Improvement. Safeguarding information is provided to support our schools, via Trust briefings and meeting

4.1 Governing Body (or SSC)

It is the responsibility of each school's Governing Body (SSC) to ensure that their school complies with its legislative duties and has regard to Government Guidance **Keeping Children Safe in Education 2021** to ensure that their school's policies, procedures and training are effective and comply with the law.

This responsibility includes understanding the local criteria for action and assessment and supplying information as requested by the three safeguarding partners (Local Authority, Police and Clinical Commissioning Group)

4.2 Each Governing Body (SSC) will:

- designate a lead SSC member for child protection and safeguarding who will oversee the school's policy and practice and champion safeguarding issues
- nominate a member of the governing body (usually the Chair) to be responsible in the event of an allegation of abuse made against the Principal
- ensure that the school has a DSL within the senior management team
- ensure that policies and procedures are in place, which are compliant with government guidance and the appropriate local Safeguarding Partnership Arrangements for each school. These should be reviewed annually and staff should be encouraged to contribute to their development. These should be made available publicly via the website or other means.
- ensure that all staff and volunteers access appropriate levels of child protection and safeguarding induction and training, including online safety. In addition, all staff should receive regular safeguarding and child protection updates (e.g. via email, e-bulletins, staff meetings) as required, and at least annually, to provide them with relevant skills and knowledge to safeguard children effectively.
- liaise closely with the DSL and receive regular reports in to monitor procedures and practice and ensure compliance
- ensure that staff understand the process and principles for sharing information, including the Data Protection Act 2018 and GDPR.
- ensure that **safe recruitment procedures** are in place and are applied for all staff and volunteers to ensure suitability to work with children, including the requirement for at least one person conducting an interview to have completed safer recruitment training. **See safer recruitment guidance – Avanti Schools Trust.**
- ensure that **Allegations Management procedures** are in place and embedded across the school
- ensure that other related procedures are in place and embedded such the Staff Code of Conduct, Safe Practice, Staff/Pupil Relationships; Acceptable use of Technologies.
- ensure that appropriate responses to children who go missing from education, particularly repeat occasions, are in place to help identify the risk of abuse and neglect, including sexual abuse or exploitation and to help prevent the risks of their going missing in future
- ensure that other related procedures e.g. FGM; Anti-bullying; Peer on Peer abuse (including sexual violence and sexual harassment); Preventing Radicalisation; Trafficking; and Modern-Day Slavery; are in place and embedded.
- ensure any deficiencies in safeguarding arrangements are remedied without delay
- ensure that staff are equipped to respond to the needs of vulnerable children including those with disabilities and those who are Looked After by the Local Authority
- ensure that the curriculum supports children in recognising and responding to risks, including on-line safety.

Our SSC's will take a proportionate risk-based approach to the level of information provided to temporary staff and volunteers on induction.

4.3 Designated Safeguarding Lead (DSL)

Each school within the Avanti Schools Trust will appoint a DSL who is a member of the senior management team and takes lead responsibility for safeguarding and child protection. This is explicit in the role-holder's job description (See Annex A for government's role description). The Deputy DSLs are trained to the same standard as the DSL.

Note: Whilst the activities of a DSL can be delegated to appropriately trained deputy DSLs, the ultimate lead responsibility for safeguarding and child protection remains with the DSL. This responsibility should not be delegated.

During term time each DSL or Deputy DSL will always be available (during school hours) for staff to discuss any safeguarding concerns. Each school will ensure appropriate cover arrangements for any out of hours/ out of term activities.

The DSL and deputy will liaise with the three safeguarding partners (Local Authority, Police and Clinical Commissioning Group) and work with other agencies in line with [Working Together to Safeguard Children 2018](#)

4.4 The DSL's will:

- Undergo training to provide them with the knowledge and skills required to carry out the role. Training should be updated every two years with regular updates (at least annually) on developments in between, e.g. via e-bulletins, Forums for DSLs, and reading time, to keep up with any developments relevant to their role.
- Act as focal point for staff concerns and liaise with the Local Authority and other agencies in accordance with Working Together to Safeguard Children 2018;
- Refer all cases of suspected abuse to local children's Social Care via the Multi-agency Safeguarding Hub (MASH)
- Refer all cases to the police where a crime has been committed

For the full Role Description for the DSL see **Appendix A**

4.5 What staff should look out for:

Any child may benefit from early help, but all staff should be particularly alert to the potential need for early help for a child who:

- is disabled and has specific additional needs
- has special educational needs (whether or not they have a statutory Education, health and Care Plan)
- is a young carer
- is showing signs of being drawn in to anti-social or criminal behaviour, including gang involvement and association with organised crime groups
- is frequently missing/goes missing from care or from home
- is at risk of modern slavery, trafficking or exploitation
- is at risk of being radicalised or exploited

- is in a family circumstance presenting challenges for the child, such as drug and alcohol misuse, adult mental health issues and domestic abuse
- is misusing drugs or alcohol themselves
- has returned home to their family from care
- is a privately fostered child

4.6 Thresholds for Intervention

The DSL will decide upon the most appropriate course of action and whether the concerns should be referred to Children's Social Care. If it is decided to make a referral to Children's Social Care parents will be informed, unless to do so would place the child at further risk or undermine the collection of evidence e.g. obtaining forensic evidence. All concerns, discussion and decisions will be recorded in writing.

The DSL will provide guidance on the appropriate action. Options will include:

- Managing any support for the child internally via the school/college's own pastoral support processes;
- An early help assessment; or
- A referral for statutory services e.g. the child might be in need, is in need or suffering or likely to suffer harm

4.7 Early Help - All staff play an important role in safeguarding and promoting the welfare of children and should be prepared to identify children who may benefit from early help. Early help means providing support as soon as a problem emerges at any point in a child's life. This may be done for example, by immediately speaking with the DSL, or their deputies, regarding any concerns or emerging issues, sharing information with other professionals to support early identification and assessment etc. Taking these steps may prevent concerns from escalating.

If early help is appropriate, the DSL will generally lead on liaising with other agencies and setting up an inter-agency assessment as appropriate. Staff may be required to support other agencies and professionals in an early help assessment, in some cases acting as the lead practitioner. Any such cases should be kept under constant review and consideration given to a referral to Children's Social Care for assessment for statutory services if the child's situation does not appear to be improving or is getting worse.

4.8 Children in Need – A child in need is defined under the Children Act 1989 as a child who is unlikely to achieve or maintain a reasonable level of health or development, or whose health and development is likely to be significantly or further impaired, without the provision of services; or a child who is disabled. The Local Authority is required to provide services for children in need for the purposes of safeguarding and promoting their welfare. Children in need may be assessed under section 17 of the Children Act 1989.

4.9 Children suffering or likely to suffer significant harm - Local authorities, with the help of other organisations as appropriate, have a duty to make enquiries under section 47 of the Children Act 1989 if they have reasonable cause to suspect that a child is suffering, or is likely to suffer, significant harm. Such enquiries enable them to decide whether they should take any action to safeguard and promote the child's welfare and must be initiated

where there are concerns about maltreatment, including all forms of abuse and neglect, female genital mutilation or other so-called honour based violence, and extra-familial threats like radicalisation and sexual exploitation.

4.10 All pupils identified as children in need or children at risk will be provided with the appropriate levels of pastoral support led by a DSL in conjunction with Heads of Year and form tutors.

5. School/ College Procedures

5.1. General

It is the responsibility of every member of staff, governing body and volunteer at all Avanti Schools Trust Schools to know, understand and follow our Child Protection and Safeguarding Policy and Procedure. They should also read Part 1 of KCSIE. Where safeguarding is a concern, all staff and volunteers etc. should maintain an attitude of **'it could happen here'** and know what to look for.

If any member of staff or volunteer is concerned about a child s/he must inform the DSL or one of the deputy DSLs immediately. They must record information regarding the concerns on the same day. The written record / or electronic record via CPOMS must be a clear, precise, factual account of the observations or what has been said. (See Appendix for recording template if not CPOMS)

Where this a child protection concern, allegation, or disclosure, the DSL will make an immediate call to Children's Social Care to alert or to consult with them. The Multi Agency Referral Form will be sent by the DSL or deputy DSL.

If in exceptional circumstances the DSL (or deputy) is not available, this should not delay appropriate action being taken. Staff should consider speaking to a member of the senior leadership team and/or take advice from Children's Social Care. In these circumstances, any action taken should be shared with the DSL as soon as is practically possible.

If a member of staff disagrees about the level of concern and feels that a child has not been protected, then any member of staff can make a direct referral to Children's Social Care.

Within one working day of a referral being made, Children's Social Care should acknowledge receipt to the referrer and make a decision about the next steps and the type of response that is required. The referrer should follow up if this information is not forthcoming.

If social workers decide to carry out a statutory assessment, staff should do everything they can to support that assessment (supported by the DSL as required).

If, after a referral, the child's situation does not appear to be improving, the referrer should consider following the their local Safeguarding Board guidance on Multi Agency Resolution of Professional Disagreements to ensure that their concerns are addressed and, most importantly, that the child's situation improves.

5.2 When concerned about a child

All staff and volunteers in Avanti School Trust should be aware that the main categories of abuse include, Physical, Emotional, Sexual Abuse and Neglect (see Appendix 3). Training should equip staff to help identify the indicators of harm. For example, if in an abusive relationship a child may:

- appear frightened of a parent or others in the household e.g. siblings;
- appear frightened of someone outside of the home, including a peer. This includes within the school setting;
- act in a way that is inappropriate to her/his age and development (full account needs to be taken of different patterns of development and cultural backgrounds);
- display insufficient sense of boundaries or lack stranger awareness;
- appear wary of adults and display a 'frozen watchfulness' or appear noticeably withdrawn.

5.3 Dealing with a disclosure

If a child discloses that he or she has been abused or neglected, the member of staff or volunteer should:

- listen to what is being said without displaying shock or disbelief, allowing the child to talk freely and at their own pace;
- take what the child says seriously;
- listen and only ask questions when it is necessary to obtain clarification;
- ask only open questions such as How did that happen? What was happening at the time? Anything else you want to tell me?
- not ask leading questions which may be considered as suggesting what might have happened, or who has perpetrated the abuse, as this can later be interpreted as putting ideas into the child's mind;
- reassure the child, but do not make promises, particularly about maintaining confidentiality - it might be necessary to refer to other agencies. It is better to say that you might have to tell someone who will ensure the correct action is taken;
- reassure the child that they were right to tell someone;
- remain objective and not prejudge an alleged perpetrator;
- make a written record as soon as possible, using the child's language when relaying what they said (do not include the personal opinion of the note taker);
- pass the information to the DSL **without delay**;

5.4 Confidentiality and Communicating with Parents

All staff in schools within the Avanti Schools Trust have a responsibility to share relevant information in response to child protection concerns or Children in Need with other specified professionals, particularly investigative agencies i.e. Children's Social Care and the Police.

If a child confides in you and requests that the information is kept secret, it is important to tell the child in a sensitive manner and appropriate to their development that you cannot promise complete confidentiality. Explain what you will do next and that information will only be shared with those who need to know in order to help.

Staff/volunteers who receive sensitive information about children and their families should therefore only share information with appropriate professionals.

Parents should be made aware of our Child Protection and Safeguarding Policy and Procedure and its availability on both the Avanti Schools Trust website as well as on each individual school's website.

Parents should be informed prior to referrals being made to other agencies, unless to do so might place the child at further risk or cause evidence to be removed or destroyed. The DSL will ensure that our school's information sharing arrangements comply with government guidance (see section 6 Information Sharing).

Any written communications containing sensitive information must only be sent to other professionals on a need to know basis, using secure mail processes e.g. secure email.

5.5 Record Keeping

When a child protection concern has been identified, reported or disclosed, the member of staff receiving this information should:

- make brief notes as soon as possible. Use the school Record of Concern Sheet wherever possible or log this as a new action onto CPOMS; all relevant additional information is to be scanned/attached to CPOMS (if required)
- not destroy any original notes – these are sometimes required by a court;
- record the date, time, place and any noticeable non-verbal behaviour and the words used by the child;
- draw a diagram to indicate the position of any visible injuries (i.e. do not undress the child beyond outer clothing that would normally be removed at school). This can also be logged onto CPOMS on the body mapping tool.
- record statements and observations rather than interpretations or assumptions;
- make a record of all concerns, discussions and decisions made, and the reasons for those decisions. If in doubt about recording requirements, staff should discuss with the DSL.
- sign and date your notes/or this will be automatically logged onto CPOMS

All notes and records must be given to the DSL promptly/ or logged onto CPOMS and flagged to the Safeguarding team.

The DSL will ensure that all safeguarding records are managed in accordance with the [Education \(Pupil Information - England\) Regulation 2005](#).

5.6 Transfer of files/records

When a child leaves one of our schools, the DSL will ensure that their child protection file, if they have one, is transferred securely to the new school or college within 5 days (as stated in Keeping Children Safe in Education 2021) and ensure that the relevant member of staff in the new establishment is made aware. For further Guidance see [Guidance on the Transfer of a Child Protection or Safeguarding File to another education setting - July 2017](#)

6. Information Sharing

Information sharing is vital in identifying and tackling all forms of abuse and neglect. The Data Protection Act 2018 and the General Data Protection Regulation (GDPR) do not prevent or limit the sharing of information for the purposes of keeping children safe. Fears about sharing information **must not** be allowed to stand in the way of the need to promote the welfare and protect the safety of children.

Further advice can be found on the Information Commissioner's Website and in particular the [ICO Guide to Data Protection](#) which includes guidance on the GDPR.

The DfE has also published [Information Sharing Advice for Safeguarding Practitioners](#)
And [Data protection: a toolkit for schools](#)

This document includes the seven golden rules to information sharing:

1. Remember that the General Data Protection Regulation (GDPR), Data Protection Act 2018 and human rights law are not barriers to justified information sharing but provide a framework to ensure that personal information about living individuals is shared appropriately.
2. Be open and honest with the individual (and/or their family where appropriate) from the outset about why, what, how and with whom information will, or could be shared, and seek their agreement, unless it is unsafe or inappropriate to do so.
3. Seek advice from other practitioners, or your information governance lead, if you are in any doubt about sharing the information concerned, without disclosing the identity of the individual where possible.
4. Where possible, share information with consent, and where possible, respect the wishes of those who do not consent to having their information shared. Under the GDPR and Data Protection Act 2018 you may share information without consent if, in your judgement, there is a lawful basis to do so, such as where safety may be at risk. You will need to base your judgement on the facts of the case. When you are sharing or requesting personal information from someone, be clear of the basis upon which you are doing so. Where there is a lawful basis to share information e.g. S47 or S17 enquiries it is good practice to inform parents that the information will be shared.

5. Consider safety and well-being: base your information sharing decisions on considerations of the safety and well-being of the individual and others who may be affected by their actions.
6. Necessary, proportionate, relevant, adequate, accurate, timely and secure: ensure that the information you share is necessary for the purpose for which you are sharing it, is shared only with those individuals who need to have it, is accurate and up-to-date, is shared in a timely fashion, and is shared securely (see principles).
7. Keep a record of your decision and the reasons for it – whether it is to share information or not. If you decide to share, then record what you have shared, with whom and for what purpose.

All staff should be proactive in sharing information as early as possible to help identify, assess and respond to risks or concerns about the safety and welfare of children, whether this is when problems are first emerging, or where a child is already known to Children's Social Care.

7 Safer Workforce

7.1 Safer Recruitment – Avanti Schools Trust has a separate Safer Recruitment Policy which specifies how all staff and volunteers must be recruited, following robust recruitment and selection process, including DBS and thorough reference checks

The aims of the Safer Recruitment policy are to help appoint the most suitable people to work with our pupils and to deter, reject or identify people who might harm pupils or are otherwise unsuitable to work or volunteer in our schools.

7.2 Safer working practice

All school staff and volunteers should take care not to place themselves in a vulnerable position with a child. Avanti Schools Trust School's Code of Conduct and Guidance for Safer Working Practice forms part of our School's compulsory training for all staff and volunteers. Click here for further [Guidance for safer working practice for those working with children and young people in education settings](#) (May 2019).

7.3 Managing allegations against staff and volunteers –

Any allegation against a member of staff (including supply staff) or volunteer, as described below, must be reported to the school's Principal without delay.

This part of the guidance relates to members of staff, supply staff and volunteers who are currently working in any school or college regardless of whether the school or college is where the alleged abuse took place. Allegations against a teacher who is no longer teaching should be referred to the police. Historical allegations of abuse should also be referred to the police.

Where an allegation is made against the Principal, the matter must be reported immediately to their particular Chair of SSC, or the Vice-Chair in his/her absence, without notifying the Principal first.

Where a member of staff or volunteer may have:

- behaved in a way that has harmed a child, or may have harmed a child;
- possibly committed a criminal offence against or related to a child; or
- behaved towards a child or children in a way that indicates he or she may pose a risk of harm to children.
- behaved or may have behaved in a way that indicates that they may not be suitable to work with children.

In addition, we ensure that staff and volunteers are aware that sexual relationships with pupils aged under 18 are unlawful and could result in legal proceedings taken against them under the *Sexual Offences Act 2003*.

Each school will also ensure that any member of staff facing an allegation will be provided with support, including a named contact if they are suspended. We will work effectively with the specific LADO to help ensure that the matter is dealt with as quickly, fairly and consistently as possible in the interests of all concerned.

The person to whom an allegation is first reported should take the matter seriously and keep an open mind. S/he should not investigate or ask leading questions if seeking clarification. Confidentiality should not be promised and information should be shared on a 'need to know' basis only.

An immediate written record of the allegations should be made, including time, date and place where the alleged incident took place, with brief details of what was said to have happened. This record should be signed and immediately passed on to the Principal (or Chair of the SSC if the allegation is made against the Principal).

The Principal or Chair of SSC will not investigate the matter but will consult the LADO via MASH.

Whilst recognising our duty to support staff, the welfare of our pupils remains our paramount consideration.

Our schools will ensure that any disciplinary proceedings against staff relating to child protection matters are concluded in full even when the member of staff is no longer employed at the school. We recognise our legal duty to refer to the Disclosure Barring Service (DBS) and any other relevant professional body details of anyone who has harmed or poses a risk of harm to a child. For further details on the management of allegations against staff, please see Avanti Schools Trust School's Safer Recruitment Policy.

As stated previously any serious issue with regards to allegations against a staff member should be shared promptly with the Education Director and the MAT Lead for SEND and Safeguarding

8. Physical Intervention/ Positive Intervention

Avanti Schools Trust's policy on physical intervention and positive handling by staff is set out separately. It complies with the [DfE's guidance on use of reasonable force](#). This policy states that staff may only use reasonable force, meaning no more force than is needed to prevent pupils from hurting themselves or others, from damaging property, or from causing disorder. It is always unlawful to use force as a punishment.

Principals and other authorised trained staff can use such force/restraint as is reasonable in the circumstances to conduct a search for the following prohibited items: knives and weapons, alcohol, illegal drugs, stolen items, cigarettes and tobacco, fireworks, pornographic images, mobile phones or any article that has been or is likely to be used to commit an offence, cause personal injury or damage property.

Where the use of force is necessary, plans and reasonable adjustments should be made for disabled children and children with special educational needs.

Any use of force or restraint must be recorded and signed by a witness. The parent/carer will be informed of the incident.

9. Whistleblowing

All staff and volunteers at our schools should feel able to raise concerns about poor or unsafe practice and potential failures our schools safeguarding regime and know that such concerns will be taken seriously by our senior leadership teams.

All staff and volunteers are to be made aware of their Whistleblowing responsibilities promptly report any concerns in the interests of protecting children and staff from poor practice and or unsuitable behaviour. This includes the requirement to self-disclose any personal information which may impact on their suitability to work in an education setting.

Where internal reporting arrangements are viewed not to have been taken seriously or with sufficient rigour:

any member of staff can raise concerns externally if the matter is not resolved by the Principal or Chair of SSC e.g. via the Local Authority's Designated Officer for Managing Allegations; the relevant local Safeguarding Childrens Board or the Government's Whistle-blowing report line: **0800 028 0285** or help@nspcc.org.uk

10. Supporting Vulnerable Children

We recognise that without appropriate intervention and support, abuse or witnessing violence may have an adverse impact on children which may last into adulthood.

Our schools will support pupils through:

- curricular opportunities to encourage self-esteem and self-motivation;
- an ethos that actively promotes a positive, supportive and safe environment and values the whole community;
- liaison with other agencies which support the pupil such as Social Care and Child and Adolescent Mental Health Services (CAMHS);

- the Behaviour policy which will support vulnerable pupils in the school. Our staff will agree a consistent approach that focuses on the behaviour of the child but does not damage the pupil's sense of worth.

10.1 Looked After Children.

The most common reason for children becoming looked after is as a result of abuse and/or neglect. We will ensure that our staff have the skills, knowledge and understanding necessary to keep looked after children safe, including children who were previously looked after.

In particular, we will ensure that appropriate staff have the information they need in relation to a child's looked after legal status (whether they are looked after under voluntary arrangements with consent of parents or on an interim or full care order) and contact arrangements with birth parents or those with parental responsibility. Our staff will obtain information about the child's care arrangements and the levels of authority delegated to the carer by the authority looking after him/her. The Designated Teacher for Children Looked After (CLA) will obtain details of the child's social worker and the name of the virtual school head in the authority that looks after the child.

The Designated Teacher for CLA will work with the virtual school head and the Personal Adviser to promote the educational achievement and welfare of existing and previously Looked After Children. Each school will ensure there is a specific named individual in each school for CLA pupils. For further information see [Role and Responsibilities of the Designated Teacher](#) and [Promoting the Education of Looked After Children.](#)

Children potentially at greater risk of harm

(KCSIE Paragraphs 159-164) [Keeping Children safe in Education 2021](#)

Children who need a social worker (Child in Need and Child Protection Plans)

Children may need a social worker due to safeguarding or welfare needs. Local authorities should share the fact a child has a social worker, and the DSL will hold and use this information so that decisions can be made in the best interests of the child's safety, welfare and educational outcomes.

There are clear powers to share this information under existing duties on both local authorities and schools to safeguard and promote the welfare of children.

Schools have an important role to play in supporting the mental health and wellbeing of pupils. It is important to be aware that 'A child's experiences of adversity and trauma can leave them vulnerable to further harm, as well as educationally disadvantaged in facing barriers to attendance, learning, behaviour, and mental health'.

Relationships and Sex Education

The Relationships Education, Relationships, Sex & Health Education (England) Regulations 2019 states that as of the summer term 2021 pupils receiving primary education must be taught Relationships Education, and pupils receiving secondary education must be taught Relationships and Sex Education.

The DfE guidance gives schools freedom to deliver the content set out in the guidance in the context of a broad and balanced curriculum.

Education for a connected world framework from the UK Council for Internet Safety supports the development of the curriculum and is of particular relevance to RSHE education and Computing. It is designed, however, to be usable across the curriculum and beyond (covering early years through to age 18) and to be central to a whole school or college approach to safeguarding and online safety.

11. Online Safety

In accordance with the KCSIE 2021 Avanti Schools Trust acknowledge their role in providing an 'effective whole school and college approach to online safety' and to their empowerment 'to protect and educate pupils, students, and staff in their use of technology and establishes mechanisms to identify, intervene in and escalate any concerns where appropriate'. The use of technology has become a significant component of many safeguarding issues; Child sexual exploitation; radicalisation; sexual predation: technology often provides the platform that facilitates harm. An effective approach to online safety empowers a school to protect and educate the whole school community in their use of technology and establishes mechanisms to identify, intervene in, and escalate any incident where appropriate. The Avanti Schools Trust is committed to ensure that 'online safety is a running and interrelated theme' and is reflected in all relevant policies as well as in consideration when planning the curriculum, teacher training, the role and responsibilities of the DSL and any parental engagement'.

Education at home. Where children are being asked to learn online at home the department has provided advice to support schools and colleges do so safely: [safeguarding-in-schools-colleges-and-other-providers](#) and [safeguarding-and-remote-education](#)

Additional information to support governing bodies and proprietors keep their children safe online (including when they are online at home) is provided in KCSIE Annex C.

The Online Safety Policy is set out in a separate document. We ensure that we have effective mechanisms to identify, intervene in, and escalate any incident where appropriate. Online safety is included in our curriculum at all levels and information is also provided to parents/**carers**. **Online Safety is classified into four areas of risk:**

- 1) **Content** – being exposed to illegal, inappropriate or harmful content
- 2) **Contact** – being subjected to harmful online interaction with other users

- 3) **Conduct** –personal online behaviour that increases the likelihood of, or causes, harm
- 4) **Commerce** –risks such as online gambling, inappropriate advertising, phishing and/or financial scams.

All staff are made aware of the policy on Online Safety which sets our expectations relating to:

- creating a safer online environment – including training requirements, filters and monitoring;
- giving everyone the skills, knowledge and understanding to help children and young people stay safe on-line;
- inspiring safe and responsible use and behaviour;
- safe use of mobile phones both within school and on school trips/outings;
- safe use of camera equipment, including camera phones; and
- what steps to take if you have concerns and where to go for further help

Staff must read the Online Safety policy in conjunction with our Code of Conduct in relation to personal online behaviour.

12. Peer on Peer Abuse

12.1 Bullying

The Avanti Schools Trust's policy on the prevention and management of bullying is set out in a separate document and is reviewed annually by the Board and is then localised and reviewed by each SSC. This policy includes reference to all prejudice related bullying. We acknowledge that to allow or condone bullying may lead to considerations under child protection procedures.

We recognise that children can also be vulnerable to physical, sexual and emotional bullying and abuse by their peers or they may be the perpetrator of such behaviour. We will always address such abuse seriously, involving partner agencies where required. We will remain alert to the possibility that a child or young person who has harmed another may well also be a victim. Staff should not dismiss some abusive sexual behaviour as 'normal' between young people and should not develop high thresholds before taking action. Equally, abuse issues can sometimes be gender specific e.g. girls being sexually touched/assaulted and boys being subject to initiation/hazing type violence.

12.2 Child on child sexual violence and sexual harassment

Avanti Schools Trust recognise that sexual violence and sexual harassment can occur between children of any age and sex. It may occur online and offline and can be complex.

Sexual violence refers to sexual offences under the Sexual Offences Act 2003 as described below:

Rape: A person (A) commits an offence of rape if: he intentionally penetrates the vagina, anus or mouth of another person (B) with his penis, B does not consent to the penetration and A does not reasonably believe that B consents.

Assault by Penetration: A person (A) commits an offence if: s/he intentionally penetrates the vagina or anus of another person (B) with a part of her/his body or anything else, the penetration is sexual, B does not consent to the penetration and A does not reasonably believe that B consents.

Sexual Assault: A person (A) commits an offence of sexual assault if: s/he intentionally touches another person (B), the touching is sexual, B does not consent to the touching and A does not reasonably believe that B consents.

Sexual harassment means 'unwanted conduct of a sexual nature' that can occur online and offline. In referencing sexual harassment, it is in the context of child on child sexual harassment. Sexual harassment is likely to: violate a child's dignity, and/or make them feel intimidated, degraded or humiliated and/or create a hostile, offensive or sexualised environment.

We also recognise the criminal offence of 'Upskirting' (where someone takes a picture under a person's clothing (not necessarily a skirt) without their permission and or knowledge, with the intention of viewing their genitals or buttocks (with or without underwear) to obtain sexual gratification, or cause the victim humiliation, distress or alarm. Anyone of any gender can be a victim.

We will ensure that all such matters are taken seriously, and that appropriate action is taken to address the issue, including the provision of support. Sexual violence or sexual harassment will not be passed off as 'banter' or just 'part of growing up'.

In response to such a report our schools will act in accordance with Part 5 of KCSIE (2021):

- that systems are in place and are well promoted, easily understood and easily accessible for children to confidently report abuse, knowing that their concerns will be treated seriously.
- reassure the victim that they will be taken seriously, and they will be supported and kept safe;
- respond in line with our safeguarding procedures outlined in section 5 of this document;
- where a concern includes an online element, follow DfE guidance: [Searching, screening and confiscation at school](#) and UKCCIS advice [Sexting in schools and colleges](#). Adults should not view sexual or forward illegal images of children. (KCSIE 2021 section 444) Wherever possible responses to incidents should be based on what DSLs have been told about the content of the imagery. See [Guidance on Suspected Indecent Imagery for Staff](#).
- staff should only share the report with those people who are necessary to progress it.

- It is important that the victim understands the next steps and who the report will be passed to
- To recognise that a child is likely to disclose to someone they trust and that this could be **anyone** in a school. All staff are trained to manage a report. However if possible, managing reports with two members of staff present (preferably one of them being the DSL or a Deputy).

Where there has been a report of sexual violence, the DSL will make and record an immediate risk and needs assessment.

Where there has been a report of sexual harassment, the DSL will consider the need for a risk assessment on a case-by-case basis.

The risk and needs assessment will consider and keep under review:

- the victim, especially their protection and support;
- whether there have been other victims
- the alleged perpetrator(s); and
- all the other children (and, if appropriate, adult pupils and staff) at the schools, especially any actions that are appropriate to protect them

Our DSL's will engage with children's social care, the police and specialist services as required. Any risk assessments undertaken by the other agencies/services will be used to inform our school/college's own risk assessment and approach to supporting and protecting their pupils and updating their risk assessment.

Important considerations:

- **'it could happen here'**- all schools are aware and will respond appropriate to all reports and concerns about sexual violence and/or sexual harassment both online and off line including those which have happened outside school.
- the wishes of the victim in terms of how they want to proceed. Victims should be given as much control as is reasonably possible;
- the nature of the alleged incident(s), including whether a crime may have been committed and consideration of harmful sexual behaviour;
- the ages and developmental stages of the children involved;
- any power imbalance between the children e.g. age differential, disability or learning difficulty
- if the alleged incident is a one-off or a sustained pattern of abuse;
- any ongoing risks to the victim, other children, adult pupils or staff; and
- other related, contextual issues e.g. in the community/local environment
- if both the alleged perpetrator and victim are still attending the same school/college, how best to keep them at a reasonable distance apart (including on transport).(KCSIE 2021 section 448 for further information)

12.3 Management of sexual violence/harassment cases

Where appropriate, the management of such cases will be agreed with in consultation with children's social care and/or the police or other specialist service. There are four possible routes – **all** underpinned by the principle that such behaviour is **never acceptable and will not be tolerated**:

Manage internally - In some case of sexual harassment, e.g. one-off incidents, it might be appropriate to handle the incident internally, perhaps through utilising our behaviour and bullying policies and by providing pastoral support.

Early Help – Providing early help can be particularly useful to address non-violent harmful sexual behaviour and may prevent escalation of sexual violence.

Referrals to children's social care – Where a child has been harmed, is at risk of harm, or is in immediate danger, we will make a referral to children's social care, who will determine whether any of the children involved are in need of protection or other services. Referring to children's social care should not delay our schools from taking immediate action to protect the victim and other children. However, we will ensure that any such actions do not jeopardise a statutory investigation.

Reporting to the Police – Any report to the police will generally be in parallel with a referral to children's social care. Where a report of rape, assault by penetration or sexual assault is made, the matter should be passed on to the police. If the alleged perpetrator is under ten (below the age of criminal responsibility), the principle of reporting to the police remains. The police will take a welfare approach, rather than a criminal justice approach.

The school/college will consult the police and agree what information can be disclosed to staff and others and in particular to the alleged perpetrator and their parents/carers. They should also discuss the best way to protect the victim and their anonymity.

With all routes outlined above, it is vital that all concerns, decisions and reasons for decisions are recorded (written or electronic).

Bail conditions –The term 'Released Under Investigation' (RUI) will apply where circumstances do not warrant the application of bail to either re-attend on a particular date or to include conditions preventing activity or in some cases ensuring compliance with an administrative process.

In all cases, our schools will work with children's social care and the police to manage any implications and to safeguard children. An important consideration will be to ensure that the victim can continue in their normal routine, including continuing to receive a suitable education.

Throughout any criminal process taking place, the police will help and support our schools as much as they can – within the constraints of any legal restrictions.

The end of the criminal process – if a child is convicted or cautioned for a sexual offence and remains in school/college, expectations regarding their future behaviour and any

restrictions must be made clear.

Safeguarding and supporting the victim – victims may not disclose the whole picture immediately. They should be asked if they would find it helpful to have a designated trusted adult to talk to about their needs and have choice about who this is. In response to any stress they may experience, flexible or alternative arrangements for their education may need to be considered. We will do everything we reasonably can to protect the victim from bullying and harassment to ensure that they continue to receive a suitable education.

Safeguarding and supporting the alleged perpetrator – Any child will likely experience stress as a result of being subject of allegations and any associated negative reactions by their peers. We will respond proportionately, recognising that the alleged perpetrator may have unmet needs as well as potentially posing a risk of harm to other children. These behaviours may be a symptom of either their own abuse or exposure to abusive practices and or materials. We will seek advice as appropriate from children's social care, specialist sexual violence services and the police.

If the alleged perpetrator moves to another educational provision, our DSL's will ensure that relevant staff at the new provision are made aware of any ongoing support needs and any potential risks to other children and the staff.

Unsubstantiated, unfounded, false or malicious reports – all concerns, discussions and decisions made, and the reasons for those decisions should be recorded in writing. Records should be reviewed so that potential patterns of concerning, problematic or inappropriate behaviour can be identified and addressed. If a report is found to be unfounded, or false the DSL should consider whether this is a cry for help or that the child could have been abused and in such circumstances a referral to Children's Services may be appropriate. If a report is shown to have been deliberately invented or malicious the schools will consider if any disciplinary action is appropriate in accordance to their behaviour policy.

13. Safeguarding Children in Specific Circumstances

13.1 Children and the court system

Guidance is available for when children are required to give evidence in **criminal courts** [5-11 year olds](#) and [12-17 year olds](#).

Making arrangements for children via the **family courts** following separation can be stressful and entrench conflict in families. The Ministry of Justice has launched useful online guidance [Get help with child arrangements](#) (also known as contact, access or custody).

13.2 Children with Disabilities or Special Educational Needs

Our schools are committed to ensure that children with special educational needs and/or disabilities have exactly the same human rights to be safe from abuse and neglect, to be protected from harm and achieve the same outcomes as non-disabled children. We recognise that disabled children do however require additional action because they can experience greater vulnerability as a result of negative attitudes and because they may have additional

needs relating to physical, sensory, cognitive and/or communication impairments.

This understanding is incorporated into our staff training, so that we all remain vigilant to identifying the additional vulnerabilities for these children in our care and provide the appropriate level and type of pastoral support.

Staff should bear in mind that additional difficulties may exist when recognising abuse and neglect in children with special educational needs and/or disabilities. This can include assumptions that indicators of possible abuse such as behaviour, mood and injury relate to the child's disability without further exploration, that children with special educational needs and/or disabilities can be disproportionately impacted by, for example, bullying without outwardly showing any signs, and there can be communication barriers in overcoming these difficulties.

Due to the different relationship that trusted adults may have with people with disabilities i.e' trust, intimate care, feeding there is a reliance on the integrity of the adult and an assumption that they will treat the client appropriately. This may lead to confusion and vulnerability and the potential for exploitation as some people are predatory and some clients are unquestioningly trusting.

Some people with disabilities have low self-esteem and possibly no or small peer groups they are prone to befriending and grooming or coaxing into situations that may lead to exploitation due to their vulnerability and naivety.

People that work with clients with disabilities are often overworked given challenging tasks this can lead to compassion fatigue which in itself can result in the abuse of power and a toxic environment as seen in certain Care homes and children's homes, in the last few years.

13.3 Children with a family member in prison

These children are at risk of poor outcomes including poverty, stigma, isolation and poor mental health. [NICCO](#) (National Information Centre on Children of Offenders) provides information to support professionals working with offenders and their children, to help mitigate negative consequence for those children.

13.4 Child Sexual Exploitation and Child Criminal Exploitation: are forms of abuse and both occur where an individual or group takes advantage of an imbalance in power to coerce, manipulate or deceive a child or young person under the age of 18 into sexual or criminal activity. In some cases, the abuse will be in exchange for something the victim needs or wants, and/or will be to the financial benefit or increased status of the perpetrator or facilitator.

Child Sexual Exploitation and Child Criminal Exploitation does not always involve physical contact; it can also occur through the use of technology. Like all forms of abuse exploitation:

- can affect any child or young person (male or female) under the age of 18 years, including 16 and 17 year olds who can legally consent to have sex;
- can still be abuse even if the sexual activity appears consensual;

- can include both contact (penetrative and non-penetrative acts) and non-contact sexual activity;
- can take place in person or via technology, or a combination of both;
- can involve force and/or enticement-based methods of compliance and may, or may not, be accompanied by violence or threats of violence;
- may occur without the child or young person's immediate knowledge (e.g. through others copying videos or images they have created and posting on social media);
- can be perpetrated by individuals or groups, males or females, and children or adults. The abuse can be a one-off occurrence or a series of incidents over time, and range from opportunistic to complex organised abuse; and
- is typified by some form of power imbalance in favour of those perpetrating the abuse.

Whilst age may be the most obvious, this power imbalance can also be due to a range of other factors including gender, sexual identity, cognitive ability, physical strength, status, and access to economic or other resources.

Some of the following signs may be indicators of Child Criminal Exploitation:

- children who appear with unexplained gifts or new possessions;
- children who associate with other young people involved in exploitation;
- children who suffer from changes in emotional well-being;
- children who misuse drugs and alcohol;
- children who go missing for periods of time or regularly come home late; and
- children who regularly miss school or education or do not take part in education.

The above Child Criminal Exploitation indicators can also be indicators of Child Sexual Exploitation, as can:

- children who have older boyfriends or girlfriends;
- children who suffer from sexually transmitted infections or become pregnant;

Our school will support the multi-agency activity to combat these crimes and help to divert and support any young pupils affected by CSE and CCE. Each school will follow their local Safeguarding Children's Board protocol for identifying and managing cases of CSE and/or CCE and promote the use of their Safeguard Identification Tool (if they provide one). Also see section 'Child on Child Sexual Violence and Sexual Harassment.

13.5 Gangs and youth violence

Schools are increasingly recognised as places where early warning signs can be spotted that younger children may be at risk of getting involved in gangs or youth violence. Crucial preventive work can be done at this stage to prevent negative behaviour from escalating and becoming entrenched. We recognise that even low levels of youth violence can have a disproportionate impact on a pupil or the wider school/community environment. We will therefore, support children in developing safeguarding skills to prevent involvement in risky behaviours, and where serious concerns arise we will work collaboratively with our partner

agencies to help prevent escalation of harm.

For further information refer to government guidance [advice to schools on gangs and youth violence](#) and [Preventing serious violence: a multi-agency approach](#).

Support for young people affected by gang association can be obtained via each local authority for example: [London gang exit](#)

13.6 County Lines

This is a geographically widespread form of criminal activity involving drug networks or gangs that groom and exploit children and young people to carry drugs and money from urban areas to suburban and rural or seaside areas. Missing episodes can be an important identifying factor, where the victim may have been trafficked for these purposes. In close working relationship with our local MASH a referral to the National Referral Mechanism will be considered for any such concerns.

Further advice can be obtained from Home Office guidance [Criminal exploitation of children and vulnerable adults - county lines](#)

13.7 Domestic Abuse

The cross-government definition of domestic violence and abuse is: any incident or pattern of incidents of controlling, coercive, threatening behaviour, violence or abuse between those aged 16 or over who are, or have been, intimate partners or family members regardless of gender or sexuality. The abuse can encompass, but is not limited to: psychological; physical; sexual; financial; and emotional. All children can witness and be adversely affected by domestic abuse in the context of their home life where domestic abuse occurs between family members. Exposure to domestic abuse and/or violence can have a serious, long lasting emotional and psychological impact on children. In some cases, a child may blame themselves for the abuse or may have had to leave the family home as a result.

Operation Encompass

Operation Encompass operates in the majority of police forces across England. It helps police and schools work together to provide emotional and practical help to children. The system ensures that when police are called to an incident of domestic abuse, where there are children in the household who have experienced the domestic incident, the police will inform the key adult (usually the designated safeguarding lead) in school before the child or children arrive at school the following day. This ensures that the school has up to date relevant information about the child's circumstances and can enable support to be given to the child according to their needs. Police forces not signed up to operation encompass will have their own arrangements in place.

National Domestic Abuse Helpline Refuge runs the National Domestic Abuse Helpline, which can be called free of charge and in confidence, 24 hours a day on 0808 2000 247. Its website provides guidance and support for potential victims, as well as those who are worried about friends and loved ones. It also has a form through which a safe time from the team for a call can be booked.

Additional advice on identifying children who are affected by domestic abuse and how they can be helped is available at:

- NSPCC- UK domestic-abuse Signs Symptoms Effects
- Refuge what is domestic violence/effects of domestic violence on children
- Safelives: young people and domestic abuse.

The Domestic Abuse Bill 2020 sought to improve awareness and understanding of coercive control offence and review effectiveness of offence. The Bill also recognises the devastating impact that domestic abuse can have on children exposed to it in their own home. Part 1 of the Bill provides that a child who sees or hears, or experiences the effects of, domestic abuse and is related to the person being abused or the perpetrator is also to be regarded as a victim of domestic abuse. This will help to ensure that locally commissioned services consider and address the needs of children affected by domestic abuse.

Our schools recognise the immediate and long-term impact of domestic abuse on a child's development and emotional wellbeing. All staff will remain vigilant to identifying the signs so that early help and protective action can be instigated where appropriate. We endeavour to provide the child with a safe and caring environment at school to help mitigate the impact of home-life stresses.

Any notifications received from the police/MASH of domestic abuse incidents, will be promptly reviewed by the DSL. This will enable the school to respond appropriately to the impact on the child/young person and to share any additional information with MASH to assist in the overall identification and assessment of risk

13.8 So-called 'honour-based' abuse (HBA)

So-called 'honour-based' abuse (HBA) encompasses incidents or crimes which have been committed to protect or defend the honour of the family and/or the community, including female genital mutilation (FGM), forced marriage, and practices such as breast ironing. Abuse committed in the context of preserving "honour" often involves a wider network of family or community pressure and can include multiple perpetrators. It is important to be aware of this dynamic and additional risk factors when deciding what form of safeguarding action to take. All forms of HBA are abuse (regardless of the motivation) and should be handled and escalated as such. Professionals in all agencies, and individuals and groups in relevant communities, need to be alert to the possibility of a child being at risk of HBA, or already having suffered HBA.

13.9 Female Genital Mutilation (FGM)

FGM comprises all non- medical procedures involving partial or total removal of the external female genitalia or other injury to the female genital organs. It is illegal in the UK and a form of child abuse with long-lasting harmful consequences.

All procedures involving partial or total removal of the external female genitalia or other injury to the female genital organs for non-medical reasons - WHO

Each school recognises that whilst there is not necessarily an intention to harm a girl through FGM, the practice has serious short and long- term medical and psychological implications. We are committed to work with families, partner agencies to promote understanding and safeguard pupils who may be at risk of this practice.

We aim to work sensitively with community groups where this may be a cultural belief and practice, however we will act to safeguard and promote our pupils welfare where required and will fulfil our duties under the *Female Genital Mutilation Act 2003* (as inserted by section 74 of the *Serious Crime Act 2015*). This places a statutory duty upon teachers to personally report to the police cases where they discover that an act of FGM appears to have been carried out on a girl under 18.

Where it is suspected that a girl is at risk of FGM being undertaken then child protection procedures must be followed.

Further information can be found in:

[Multi-agency statutory guidance on female genital mutilation](#) and

[Mandatory reporting of female genital mutilation - procedural information](#)

13.10 Forced Marriage

WHAT IS THE DIFFERENCE BETWEEN AN ARRANGED AND FORCED MARRIAGE?

Arranged marriage: Both participants give their full consent and enter the marriage willingly.

Forced marriage: One or both participants enter the marriage without giving their consent. They go through with the wedding under duress from their families.

Forcing someone into marriage is a criminal offence in the UK.

A forced marriage is one entered into without the full and free consent of one or both parties and where violence, threats or any other form of coercion is used to cause a person to enter into a marriage. A lack of consent can be where a person does not consent or where they cannot consent e.g. if they have learning disabilities. There can also be links to so-called 'honour based' abuse. The Forced Marriage Unit can be contacted for advice or information on 020 7008 0151 or email: fmufco.gov.uk Our school recognises that it has an important role in safeguarding children from forced marriage by educating pupils about the law and their rights and in identifying signs of risk. Further information can be found in [Government Guidance on Forced Marriage](#).

13.11 Homelessness

Our staff will alert the DSL of families becoming or at risk of becoming homeless, so that the DSL can refer to housing services at the earliest opportunity. Indicators for the risk of homelessness can include debt, rent arrears, domestic abuse and anti-social behaviour, as well as the family being asked to leave a property. Duties introduced under The Homelessness Reduction Act 2017 shift focus to early intervention. For further information refer to [Homeless Reduction Act Factsheets](#).

13.12 Homestay - Children staying with host families

Pupils may as part of their learning experience, stay for short periods with a host family (homestay) e.g. as part of a foreign exchange visit or sports tour. We will ensure the suitability of the adults in their respective families who will be responsible for the visiting child during the stay. See Avanti Schools Trust **Safer Recruitment Policy** for further details on our specific duties.

13.13 Missing Education or Missing from Home and Care

A child going missing from education, particularly repeatedly, is a potential indicator of abuse or neglect and such children are at risk of being victims of harm, exploitation or radicalisation.

Staff should follow the School's procedures for unauthorised absence and for dealing with children that go missing from education, particularly on repeat occasions, to help identify the risks of abuse and neglect, including sexual exploitation, and to help prevent the risks of their going missing in future. The School's procedures are set out in the Attendance Policy. The Designated Safeguarding Lead will monitor unauthorised absence particularly where children go missing on repeated occasions.

The schools in the Avanti Schools Trust will fulfil their statutory duty in notifying the local authority when removing a pupil's name from the admission's register outside of the normal transition points. They will make reasonable enquiries to establish the whereabouts of the child jointly with the local authority before deleting their name from the register. They will also notify the local authority within five days of adding a pupil's name at a non-standard transition point.

When one of our pupils goes missing from home or care we will contribute to the police and local authority's efforts to identify and locate the child by completing the [Grab Pack for a Missing Children](#). For further guidance see [Children missing education](#)

13.14 Preventing Radicalisation

Radicalisation refers to the process by which a person comes to support terrorism and forms of extremism. It can happen in many different ways and settings. Each school and its staff have a duty to have due regard to the need to prevent people from being drawn into terrorism (the Prevent duty). [Protecting children from radicalisation: the Prevent Duty](#) provides guidance for schools and childcare providers on preventing children and young people from being drawn into terrorism.

Being drawn into terrorism includes not just violent extremism but also non-violent extremism, which can create an atmosphere conducive to terrorism and can popularise views which terrorists exploit.

The Government's Counter Extremism Strategy defines 'Extremism' as: "the vocal or active opposition to our fundamental values, including, democracy, the rule of law, individual liberty and the mutual respect and tolerance for those of different faiths and beliefs. We also regard calls for the death of members of our armed forces, as extremist."

Each school seeks to promote an understanding of and commitment to fundamental British values such as democracy, the rule of law, individual liberty, tolerance and respect for other people. Pupils are able to discuss sensitive topics, including terrorism and extremist ideas that are part of terrorist ideology, and learn how to challenge these ideas. The Prevent duty is not intended to limit discussion of these issues and each School in the Avanti Schools Trust and its staff should be mindful of their existing duties to forbid political indoctrination and secure a balanced presentation of political issues.

As with other safeguarding risks, staff should be alert to changes in children's behaviour which could indicate that they may be in need of help or protection. Staff should use their judgment in identifying children who might be at risk of radicalisation and act proportionately. Staff are encouraged to discuss their concerns with the Designated Safeguarding Lead who can advise on assessing the level of risk to identify the most appropriate referral, which could include making a referral to the Channel programme or Children's Social Care.

Channel is a programme which focuses on providing support at an early stage to people who are identified as being vulnerable to being drawn into terrorism. It provides a mechanism for schools to make referrals if they are concerned that an individual might be vulnerable to radicalisation. It is a voluntary process which allows the individual to withdraw from the programme at any time.

All staff are encouraged to familiarise themselves with the government's website www.educateagainsthate.com. The website is designed to equip school leaders, teachers and parents with the information, tools and resources they need to recognise and address extremism and radicalisation in young people.

The School has a risk assessment process in place for considering and protecting children at risk of radicalisation and extremism. The risk assessment takes into consideration that the internet and use of social media have become major factors in the radicalisation of young people and our school's E-safety policy and curriculum embeds understanding of these particular risks.

Each school will help to identify young people at risk and work with local partnership arrangements including the **Channel Programme** to help support and divert any young people from associated harm: Click here for further guidance [Channel Duty Guidance](#)

13.15 Private Fostering

We recognise the importance of identifying children in Private Fostering arrangements so that their needs can be fully assessed by the local authority. In all schools in the Avanti School Trust we will confirm the status of every pupil's care arrangements on admission (or when a pupil's care arrangements change) and notify the local authority of any known or suspected Private Fostering arrangement. We will support any subsequent assessment and remain alert to any additional needs that children placed away from their immediate families might face. See links for information on what constitutes [private fostering](#) and details of [The Children's Act 1989: private fostering](#).

13.16 Substance Misuse

Pupils: We recognise the clear role each school has to play in preventing drug misuse as part of our pastoral responsibilities. We will provide age appropriate information on drugs and alcohol and tackle problem behaviour, working with local partners to prevent drug or alcohol misuse. For further guidance refer to [DfE and ACPO Drug Advice for schools](#). (ACPO has changed to the National Police Chiefs' Council).

Parental Substance Misuse: Substance misuse (drugs or alcohol) may impact on parental capacity and can significantly exacerbate other concerns such as domestic violence or mental health issues. We will remain vigilant in identifying and supporting pupils and their families facing such issues, and work in collaboration with other agencies where necessary to prevent significant harm.

Mental Health Pupils: Each school seeks to promote positive mental health in our pupils and to identify and address those with less severe problems at an early stage and build their resilience. We are also committed to identifying and supporting pupils with more severe needs and to help make appropriate referrals to specialist agencies such as Child and Adolescent Mental Health Services (CAMHS) where necessary.

All staff should be aware that mental health problems can, in some cases, be an indicator that a child has suffered or is at risk of suffering abuse, neglect or exploitation.

Only appropriately trained professionals should attempt to make a diagnosis of a mental health problem. Staff however, are well placed to observe pupils day-to-day and identify those whose behaviour suggests that they may be experiencing a mental health problem or be at risk of developing one.

Where children have suffered abuse and neglect, or other potentially traumatic adverse childhood experiences, this can have a lasting impact throughout childhood, adolescence and into adulthood. It is key that staff are aware of how these children's experiences, can impact on their mental health, behaviour and education.

If staff have a mental health concern about a child that is also a safeguarding concern, they must immediately speak to the DSL or a deputy DSL.

The Department for Education has published advice and guidance on [Preventing and Tackling Bullying](#), and [Mental Health and Behaviour in Schools](#). In addition, Public Health England has produced a range of resources to support secondary school teachers to promote positive health, wellbeing and resilience among young people including its guidance '[Promoting children and young people's emotional health and wellbeing](#)'. Its resources include social media, forming positive relationships, smoking and alcohol.

Parental Mental Health: We recognise that some parents with mental health issues may

experience difficulties at times with their parenting responsibilities. We are committed to supporting such families and will endeavour to identify those who would benefit from early help from local services and work with them to avoid any adverse impact on their children. For further guidance refer to [Parental mental health](#)

13.17 Trafficking and Modern Day Slavery

All Avanti Trust Schools will remain alert for children trafficked into the country who may be registered at our school for a term or longer, before being moved to another part of the UK or abroad. We will bear in mind that not all children who go missing from education have been victims of trafficking. For example, there may be instances of children from communities that move around – Gypsy, Roma, Traveller or migrant families – who collectively go missing from school. For further government guidance refer to [Safeguarding Children who may have been trafficked practice guidance](#).

13.18 Young carers

With so many adult responsibilities, young carers often miss out on opportunities that other children and young people have to play and learn. We in Avanti Trust Schools are uniquely placed to identify and respond to concerns and ‘triggers’ where children and young people may require additional help as carers. We will aim to respond early with our own pastoral support and where appropriate seeking help from local authority support services for young carers.

Appendix 1 Role Description for Designated Safeguarding Lead

SSC's, proprietors and management committees should appoint an appropriate **senior member** of staff, from the school **leadership team**, to the role of designated safeguarding lead.

This person should have the appropriate status and authority within the school to carry out the duties of the post. They should be given the time, funding, training, resources and support to provide advice and support to other staff on child welfare and child protection matters, to take part in strategy discussions, inter-agency meetings, contribute to the assessments of children – and/or to support other staff to do so.

Any deputy should be trained to the same standard as the DSL, but the ultimate lead responsibility for child protection remains with the DSL.

In accordance with Annex C of Keeping Children Safe in Education, the main responsibilities of the DSLs are:

Managing referrals

The Designated Safeguarding Lead is expected to refer cases:

- of suspected abuse to the local authority children's social care as required;
- support staff who make referrals to local authority children's social care;
- refer cases to the Channel programme where there is a radicalisation concern as required;
- support staff who make referrals to the Channel programme;
- To take lead responsibility for promptly making referrals to the police where a crime may have been committed which involves a child. The National Police Chiefs' Council advice '[When to call the police](#)' should assist Designated Safeguarding Leads understand when they should consider calling the police and what to expect when they do.

Working with others

The designated safeguarding lead is expected to:

- To take lead responsibility in early help cases and liaise with other agencies;
- act as a point of contact with the three safeguarding partners (Local Authority, Police and Clinical Commissioning Group (CCG)
 - as required liaise with the case manager and the LADO for child protection concerns in cases which concern a staff member
- liaise with the Principal to inform him or her of issues especially
- ongoing enquiries under *section 47* of the *Children Act 1989* and police investigations;
- liaise with staff (especially pastoral support staff, school nurses, IT Technicians, and SENDCOs or the named person with oversight for SEN in a college) on matters of safety and safeguarding (including online and digital safety) and when deciding whether to
- make a referral by liaising with relevant agencies.
- Act as a source of support, advice and expertise for staff.

Training

- To undergo training, at least every two years, to acquire the knowledge and skills required to carry out the role;
- To undertake Prevent awareness training; and
- To ensure knowledge and skills are refreshed at regular intervals, as required, but at least annually to keep abreast of developments relevant to their role so they:
 - Understand the assessment process for providing early help and intervention;
 - Have a working knowledge of how local authorities conduct a child protection case conference and a child protection review conference and be able to attend and effectively contribute when required to do so;
 - Ensure each member of staff has access to and understands this Policy and child protection procedures, and in particular, new and part-time staff;
 - Are alert to the specific needs of children in need, those with special educational needs and young carers;
 - Understand relevant data protection legislation and regulations, especially the Data Protection Act 2018 and the General Data Protection Regulation;
 - Are able to keep detailed, accurate, secure written records of concerns and referrals;
 - Understand and support the School with regards to the requirements of the Prevent duty and are able to provide advice and support to staff on protecting children from the risk of radicalisation;
 - Are able to understand the unique risks associated with online safety and be confident that they have the relevant knowledge and up to date capability required to keep children safe whilst they are online at School;
 - Can recognise the additional risks that children with Special Educational Needs and/or Disabilities face online, for example, from online bullying, grooming and radicalisation and are confident they have the capability to support children with Special Educational Needs and/or Disabilities to stay safe online;
 - Obtain access to resources and attend relevant refresher training courses; and
 - Encourage a culture of listening to children and taking account of their wishes and feelings, among all staff, in any measure the School puts in place to protect them.

Raising Awareness

The designated safeguarding lead should:

- ensure the school's child protection policies are known, understood and used appropriately;
- ensure the school or college's child protection policy is reviewed annually (as a minimum) and the procedures and implementation are updated and reviewed regularly, and work with governing bodies or proprietors regarding this;
- ensure the child protection policy is available publicly and parents are aware of the fact that referrals about suspected abuse or neglect may be made and the role of the school or

- college in this; and
- link with the safeguarding partner arrangements to make sure staff are aware of training opportunities and the latest local policies on safeguarding.
 - To help promote educational outcomes by sharing the information about the welfare, safeguarding and child protection issues that children, including children with a social worker, are experiencing, or have experienced, with teachers and Senior Leadership Team;

Transfer of child protection files

When a child transfers to another school or college, the DSL should inform the receiving school within **five school days** that a child protection/ safeguarding file exists. The receiving school should routinely ask the previous school if a child protection/safeguarding file exists, for all transfers. The original child protection/ safeguarding file must be passed on either by hand or sent recorded delivery, separate from the child's main school file, within five school days from notification. If CPOMS is used then the file transfer should be organised during this time period. Care must be taken to ensure confidentiality is maintained and the transfer process is as safe as possible. Parents should not be used as couriers for such files. [Guidance on the Transfer of a Child Protection or Safeguarding File to another education setting - July 2017](#) .

Availability

During term time the DSL or deputy should always be available (during school hours) for staff to discuss any safeguarding concerns. Whilst generally speaking the DSL or deputy would be expected to be available in person, it is a matter for individual schools, working with the DSL to define what "available" means and whether in exceptional circumstances availability via phone and or Skype or other such media is acceptable.

It is a matter for individual schools and the DSL to arrange adequate and appropriate cover arrangements for any out of hours/out of term activities.

Appendix 2

Record of Concern (where required if cannot access CPOMS)

Child's Name:			
Child's DOB:			
Gender :	Ethnic Origin:	Disability Y/N:	Religion:
Date and time of concern:			
Your account of the concern: (what was said, observed, reported and by whom)			
Additional Information: (your opinion, context of concern/disclosure)			
Your response: (what did you do/say following the concern)			
Your name:		Your signature:	
Your position in school:		Date and time of this recording:	
Action and response of DSP/Principal:			
Feedback given to member of staff reporting concern:		Information shared with any other staff? If so, what information was shared and what was the rationale for this?	
Name:..... Date:.....			

Checklist for DSL (to be printed on back of record of concern form)

✓	Child clearly identified
✓	Name, designation and signature of the person completing the record populated?
✓	Date and time of any incidents or when a concern was observed?
✓	Date and time of written record?
✓	Distinguish between fact, opinion and hearsay
✓	Concern described in sufficient detail, i.e. no further clarification necessary?
✓	Child's own words used? (Swear words, insults, or intimate vocabulary should be written down verbatim.)
✓	Record free of jargon?
✓	Written in a professional manner without stereotyping or discrimination?
✓	The record includes an attached completed body map (if relevant) to show any visible injuries

BODY MAPS: (If cannot access and record on CPOMS)



Body Chart 1.pdf



Body Chart 2.pdf

Appendix 3 Types of abuse and neglect

All staff should be aware that firstly; abuse, neglect and safeguarding issues are rarely stand-alone events that can be covered by one definition and, in most cases, multiple issues will overlap with one another. Secondly, harmful behaviours such as substance abuse, sexting and truanting can put children in danger, and thirdly; that safeguarding incidents and/or behaviours can be associated with factors outside the School and/or can occur between children outside of these environments.

All staff, but especially the DSLs and their deputies should consider whether children are at risk of abuse or exploitation in situations outside their families. Extra-familial harms take a variety of different forms and children can be vulnerable to multiple harms including but not limited to sexual exploitation, criminal exploitation, and serious youth violence.

Keeping Children Safe in Education defines types of abuse and neglect as follows:

Abuse: a form of maltreatment of a child. Somebody may abuse or neglect a child by inflicting harm or by failing to act to prevent harm. Children may be abused in a family or in an institutional or community setting by those known to them or, more rarely, by others (e.g. via the internet). They may be abused by an adult or adults or by another child or children.

Physical abuse: a form of abuse which may involve hitting, shaking, throwing, poisoning, burning or scalding, drowning, suffocating or otherwise causing physical harm to a child. Physical harm may also be caused when a parent or carer fabricates the symptoms of, or deliberately induces, illness in a child.

Emotional abuse: the persistent emotional maltreatment of a child such as to cause severe and adverse effects on the child's emotional development. It may involve conveying to a child that they are worthless or unloved, inadequate, or valued only insofar as they meet the needs of another person. It may include not giving the child opportunities to express their views, deliberately silencing them or 'making fun' of what they say or how they communicate. It may feature age or developmentally inappropriate expectations being imposed on children. These may include interactions that are beyond a child's developmental capability as well as overprotection and limitation of exploration and learning, or preventing the child participating in normal social interaction. It may involve seeing or hearing the ill-treatment of another. It may involve serious bullying (including cyberbullying), causing children frequently to feel frightened or in danger, or the exploitation or corruption of children. Some level of emotional abuse is involved in all types of maltreatment of a child, although it may occur alone.

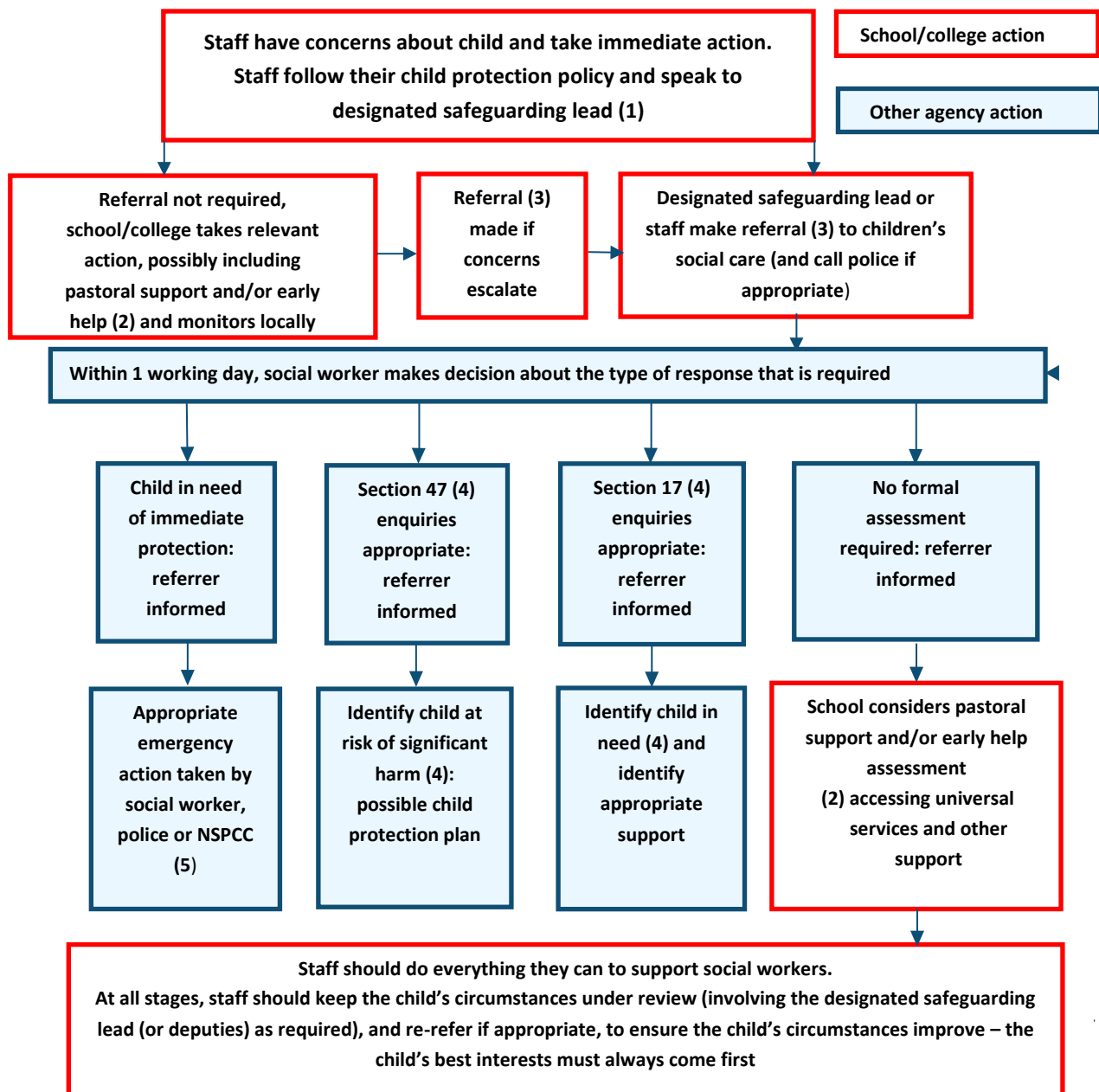
Sexual abuse: involves forcing or enticing a child or young person to take part in sexual activities, not necessarily involving a high level of violence, whether or not the child is aware of what is happening. The activities may involve physical contact, including assault by penetration (for example rape or oral sex) or non-penetrative acts such as masturbation, kissing, rubbing and touching outside of clothing. They may also include non-contact activities, such as involving children in looking at, or in the production of, sexual images, watching sexual activities, encouraging children to behave in sexually inappropriate ways, or grooming a child

in preparation for abuse (including via the internet). Sexual abuse is not solely perpetrated by adult males. Women can also commit acts of sexual abuse, as can other children. The sexual abuse of children by other children is a specific safeguarding issue in education

Neglect: the persistent failure to meet a child's basic physical and/or psychological needs, likely to result in the serious impairment of the child's health or development. Neglect may occur during pregnancy as a result of maternal substance abuse. Once a child is born, neglect may involve a parent or carer failing to: provide adequate food, clothing and shelter (including exclusion from home or abandonment); protect a child from physical and emotional harm or danger; ensure adequate supervision (including the use of inadequate care-givers); or ensure access to appropriate medical care or treatment. It may also include neglect of, or unresponsiveness to, a child's basic emotional needs.

Appendix 4

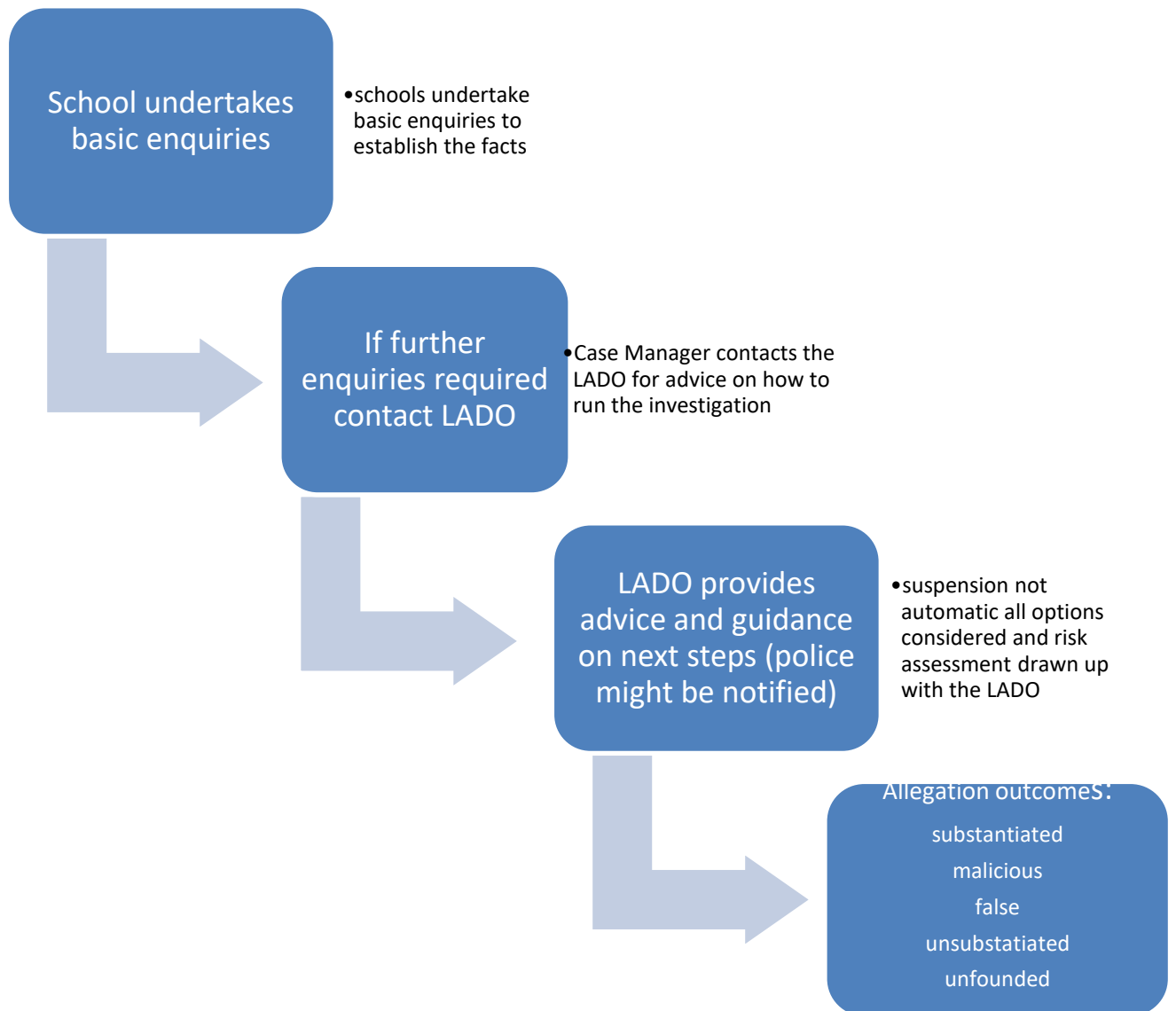
Actions where there are concerns about a child



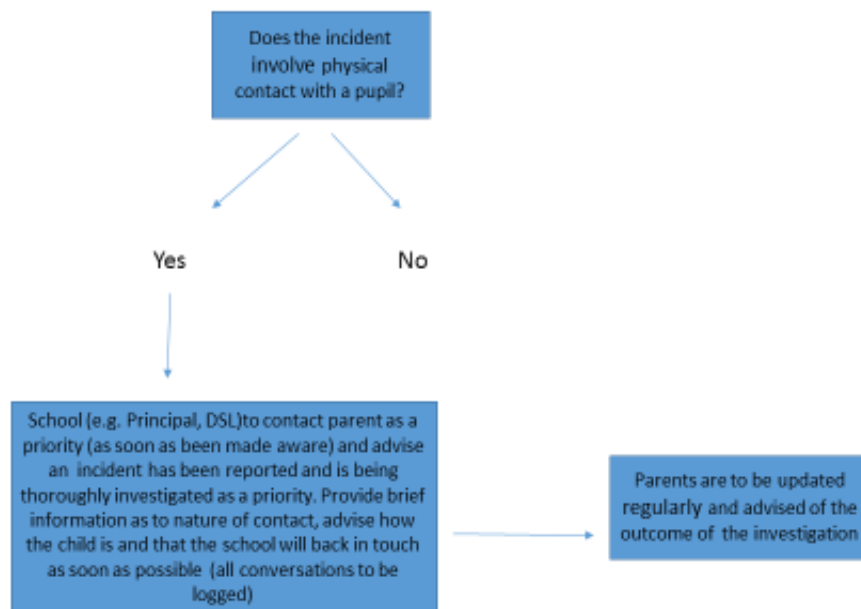
Appendix 5

Managing Allegations Against a member of staff

- 1) Allegations that may meet the Harms threshold (each school must have an understanding of their LA arrangements for managing allegations and also refer to KCSIE 2021 Section 4)



Appendix 5 continued – school processes with regards contacting parents re: Allegations Made against members of staff which might meet the harms threshold



2) Concerns that do not meet the harm threshold (including allegations)

- Low-level concerns about a member of staff, supply staff, volunteer or contractor should be reported as per paragraph 74 KSCIE 2021

All to be thoroughly investigated
All to be recorded in writing
Records should be reviewed so that potential patterns of concerning, problematic or inappropriate behaviour can be identified

Appendix 6 Avanti Schools Trust Safeguarding structure

Avanti Schools Trust – MAT Safeguarding Structure

