



AVANTI PARK SCHOOL

Prospectus

Avanti Park School, Frome

Welcome from Abby Atkins, Principal



Welcome to Avanti Park School. Thank you for taking the time to read our prospectus. Our ethos at Avanti Park is built on three areas: Educational Excellence, Character Formation and Spiritual Insight. We are very proud of our inclusive, warm and caring approach. Strong relationships between staff and pupils are incredibly important to us and are key to ensuring that your children will flourish and reach their academic and social potential.

All staff at Avanti Park School work in partnership with parents to ensure that every child is prepared to meet their life challenges, with high standards in literacy and mathematics as well as memorable experiences in other curriculum areas such as arts, craft and whole school festival celebrations. Through our curriculum pupils will gain a reflective, compassionate understanding of themselves and the communities around them.

We hope that this Prospectus will give you a flavour of our school. Please do contact the school office with any questions you may have about our unique, wonderful school or to arrange a visit.



Contents

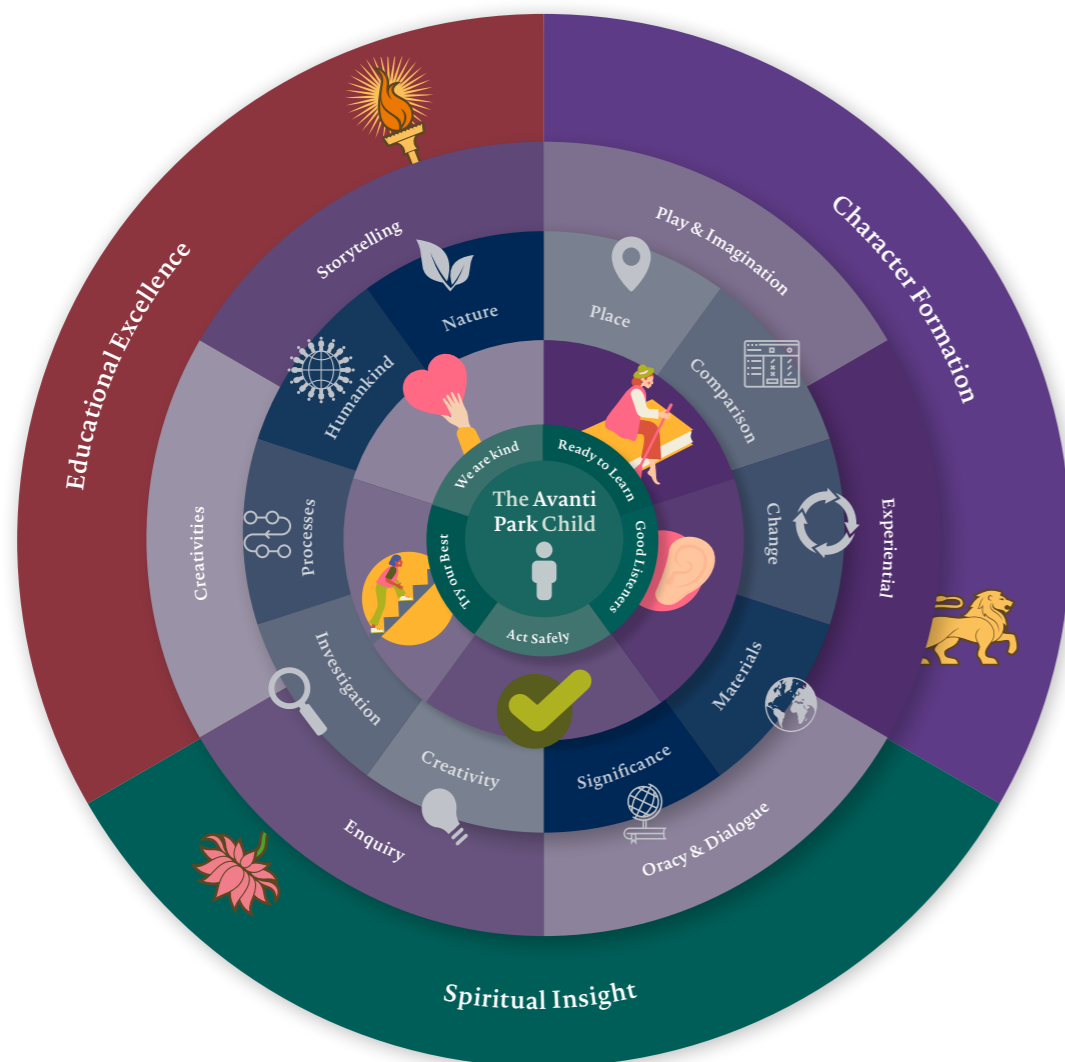
4	Curriculum Model	10	Achieving our vision
5	The Three Pillars	18	Life at Avanti
6	Tour of the School	20	Avanti Schools
8	Curriculum	23	How to Apply



Our Curriculum Model

At Avanti Park, our aim is to enable our students to be the very best version of themselves and ultimately contribute to making the world a better place (The Avanti Way).

Through a curriculum built on the Avanti three pillars and by actions underpinned by the six core values, students are able to learn, develop and grow into a life of fulfilled potential.



The Three Pillars

Our school prepares pupils for their respective life-journeys by promoting educational excellence, character formation and spiritual insight.

Educational Excellence



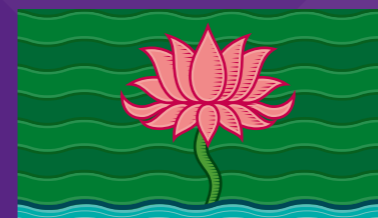
Our vision for educational excellence is one where deeply inspired teachers nurture joyful students and nourish their innate passion for learning. Learning is a quest to discover each student's unique gifts and potential and lay the foundation for their lifelong journey of learning. This is inseparable from high academic standards, where a challenging holistic curriculum cultivates independently thoughtful and reflective students by working towards a sense of mastery, emphasising depth, and not just breadth.

Character Formation



Our vision for character formation is one where virtues are taught by example and a supportive community of learners fosters a powerful sense of individual and collective purpose. Learning develops for these conscious changemakers as a quest for making the world a better place, starting with oneself. The capacity to internalise and put into practice what we have learned is the true test of learning. Building this capacity demands an experiential, virtues-led curriculum that embraces collaboration, custodianship and global perspectives.

Spiritual Insight



Our vision for spiritual insight is one where our interconnectedness with all living beings and with the universe, urges acts born out of humility and love, and the Self is perceived beyond its layers of coverings. Learning blossoms for these seekers as a quest for self-discovery and opens the door to their unlimited potential; an antidote to the emptiness of a materialistic or mechanistic worldview. The curriculum unveils the possibilities of sacredness and transcendence at every moment and so engenders a deeply positive attitude to life, enduring happiness and heartfelt relationships.

Tour of the School



Reception ▲

The Avanti Park reception area is in the original high Victorian building. High ceilings give a wonderful open feel.



Classrooms ▼

Each room within the Chantry block is well equipped to deliver the the KS1 and 2 curriculum. There is a reading area and carpet space for group reading and activities. All rooms have a state of the art interactive screen to enhance the learning experience



Outdoor Classrooms ▼

We are lucky to have two outdoor classrooms one round house and one barn like structure perfect for learning outside even when it's raining!



EYFS Room ◀

These beautiful rooms are wooden clad and have a very natural feel. Each have a kitchen area for cooking and also lead out onto a gorgeous garden for outdoor learning and play.



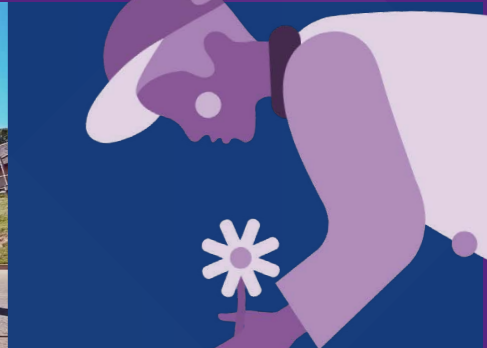
Science Lab ▶

A well equipped science lab is used for GCSE and KS3 Science lessons.



Playground ▶

A large playground outside of the Chantry block has a climbing area and also a sandpit for sand play. There is plenty of space for children to run around and burn off some energy.



Library ◀

Our diverse and well equipped library offers a quiet and inspiring space for students to find resources and work or read quietly.



Main Hall ▶

A spacious wooden clad area for games, drama, exercise and indoor sports. Children also will eat their lunch here. The walls are covered with beautiful art work.



The Curriculum

The Avanti Park curriculum has been designed to meet students' individual learning needs, so every student has the maximum opportunity to succeed and realise their ambitions.

Key Stage 1: Ages 5 - 7

At KS1, the curriculum is delivered through a concept based approach. Subjects are woven into these topics to make meaningful links. We know young children learn best through experiencing a curriculum which is relevant and meaningful to them. This is based on good early years practice and in encompassing the National Curriculum requirements. English and mathematics will be delivered discretely. The children may be involved in directed and independent cross curricular activities related to the week's learning objectives, throughout the day, either with an adult or independently.



COMMITTED TO INCLUSION
A dedicated Inclusion team ensures each child is viewed holistically

Key Stage 2: Ages 7 - 11

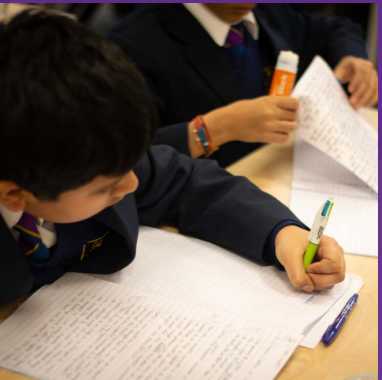
Pupils will enter key stage 2 equipped to access a broad and balanced curriculum, that includes all of the required subjects of the national curriculum as well as yoga, a modern foreign language and environmental studies. A carefully constructed curriculum in the core subjects and provision to develop the skills that bridge the two key stages will help to guard against regression in rates of progress.



YOUR TIME TO SHINE
Performing Arts is a fun way to build confidence through self-expression

Key Stage 3: Ages 11 - 14

Our key stage 3 pupils will be our oldest learners and will therefore be expected to model the behaviours and outcomes for the rest of the school. By this point in their education pupils will need to be challenged to learn with even greater independence within a more specialised curriculum which will have an increasing focus on specialist subject areas. Greater detail within a wider range of subjects will help to prepare pupils for the move into Year 9 and then into key stage 4.



DEVELOPING POTENTIAL
Academic and pastoral support is at the forefront of all we do

Time	Reception	Key stages 1/2	Key stage 3 (and Year 11)
08.45 - 9.00	Registration/Assembly	Registration/Assembly	Registration/Assembly
09.00 - 10.00	Morning session 1	Morning session 1	Lesson 1
10.00 - 11.00			Lesson 2
11.00 - 11.15	Break	Break	Break
11.15 - 12.15	Morning session 2	Morning session 2	Lesson 3
12.15 - 13.15	Lunch Until 1.30	Lunch	Lunch
13.15 - 14.15	Afternoon session Home at 3pm	Afternoon session	Lesson 4
14.15 - 15.15			Lesson 5

How we achieve our vision

How we recognise educational excellence:

- Teachers and students are inspired and joyful.
- There is high quality dialogue; students display the ability and willingness to listen to others with an open mind and to speak sincerely, questioning their own assumptions and engaging in empathic dialogue.
- There is a culture of intellectual curiosity and continuous professional development, including a focus on connecting research to classroom practice.
- Learning is approached by examining the big questions of life in a holistic, values-based and contextualised curriculum to deepen motivation and personal insight.
- Long-term student progress at least matches, in broad terms, the best state-funded and private schools in the country.
- Students are actively involved in creating their own paths of learning with opportunities for in-depth study of their chosen areas, gaining deeper insight into their interests and abilities.
- There is the committed engagement of parents and carers as co-educators.



Educational Excellence



How we achieve our vision

How we recognise character formation:

- Avanti's virtues of respect, self-discipline, courage, integrity, empathy and gratitude are tangible throughout curriculum planning and school life.
- The curriculum is experience based to support the transition from knowledge to wisdom and includes global perspectives to facilitate their transcultural proficiency.
- Students make conscientious choices, develop moral literacy, promote the common good and display a sense of stewardship as well as a reverence for all life, nature and the earth's resources.
- There is excellent provision for Philosophy, Religion & Ethics, PSHE, yoga and meditation.
- Student voice is palpable throughout the school, with ever-increasing opportunities for developing leadership and oracy.
- Students take ownership of their learning experience by means such as self-organised learning and principles of restorative practice.
- Clean, uncluttered and inspiring learning environments support a mindful engagement with learning.



Character Formation



How we achieve our vision

How we recognise spiritual insight:

- Students have profound and stirring experiences of religious education, festivals and other activities for spiritual cultivation.
- Effective pastoral care supports each student's personal, emotional and spiritual journey.
- Students develop authentic and broad-minded insight into the complexities, essences and core principles underlying the varied manifestations of religion and spirituality.
- The curriculum and school life make spirituality relevant and accessible to all, irrespective of faith or belief.
- Students evidence spiritual insight in terms of their own identity, their relationship with others, with the wider world and for some, their relationship with God; in those of our Hindu faith-designated schools, this includes opportunities for awakening each person's unique and loving relationship with Lord Krishna.
- There are opportunities and structures to support the development of heartfelt relationships between members of the school community, from which each person feels supported and nurtured.
- All members of the school community are committed to introspection and their own personal journey of self-discovery.



Spiritual Insight





Aiming for Excellence

Avanti Schools Trust is driven by five strategic aims which allow us to measure our progress and effectiveness.

I Outstanding in every Ofsted category

Using Ofsted's framework as the benchmark, Trust staff and consultants carry out support visits, audits and mini-inspections to ensure awareness of a school's grading in each Ofsted category. The best possible support is provided to each of our schools to accelerate progress towards outstanding and beyond.

II A national family

The Trust maintains and keeps under regular review a pipeline of new school proposals. The current status, next steps and projected start date are reviewed to ensure that we are well prepared for the new schools that join our family and that our growth is optimal in terms of rate, location and nature of offering.

III Excellent service to Trust schools

The Trust team provides a set of central services and brokers and quality assures a small number of critical external providers across the family of schools, such as IT and HR advice. All of these services are kept under review to ensure that they are both excellent and best value.

IV Enriching the nation's education

We are committed to contributing to the heart of the nation's school system. This will be delivered through partnership with Government and DfE, teaching alliances, universities and other organisations working in education. The Trust aims to develop its own Teaching School status with associated partner organisations.

V Leaders in ethics-based education

The distinctive ethos of the Trust is manifest in its Philosophy, Religion & Ethics curriculum. The Trust seeks to become a thought leader in these areas with a view to developing a unique and accredited programme for spiritual and ethics-based education.

Life at Avanti



Project-based learning

Project-based learning is a dynamic classroom approach in which students actively explore real-world problems and challenges and acquire a deeper knowledge. Students at all ages engage in projects, from studying the environment to social experiments to working on scientific innovations.



Yoga

Every student has access to Yoga and Mindfulness sessions ranging from 20 minutes to 1 hour a week. Yoga and Mindfulness help ground students, relieve stress and improve their overall health and wellbeing.

Avanti Nights

Avanti hosts regular events called "Avanti Nights" for parents and the wider community. This is a series of events focused around wellbeing and development for parents in their personal and family lives. We've had events ranging from "Conscious Parenting" to "the Business of Life." These events provide an opportunity for parents to hear expert speakers and gain wisdom and insight into every-day topics.



Fresh Vegetarian Meals

We believe a healthy gut is the basis of a healthy life, and that's why it's so important to us that we only use the freshest ingredients when preparing our tasty, nutritious vegetarian meals available for all children.



Retreats

Avanti Getaway! Staff and students get the opportunity to go to annual off-site retreats. These are a chance to develop friendships, go out of their comfort zone, improve their wellbeing and reconnect with nature.

Wellbeing Wisdom

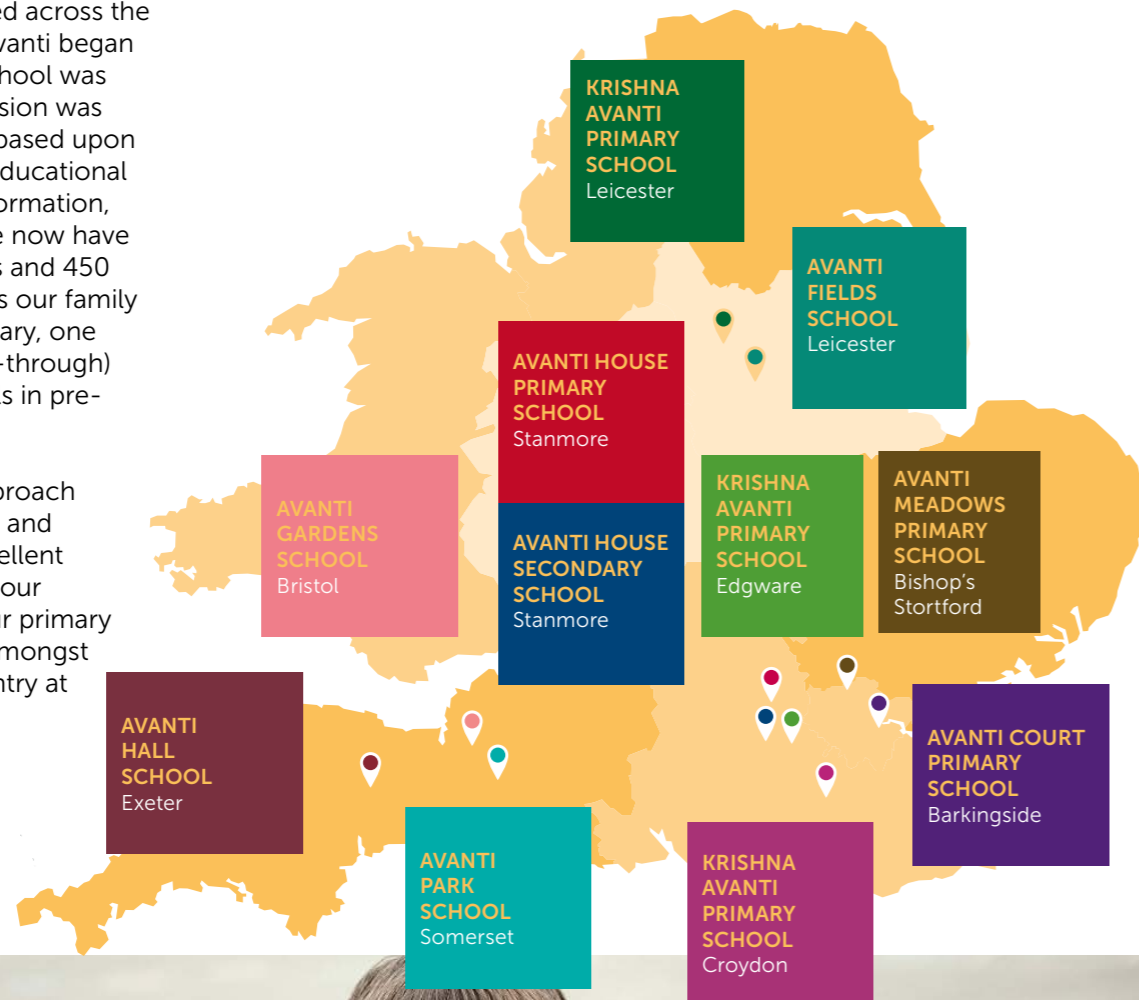
Avanti staff have access to regular wellbeing sessions. Our previous sessions have been led by medical professionals, corporate coaches and even monks! We discuss everything from how to overcome stress to learning about meditation.



Avanti Schools Across the UK

Avanti Schools are based across the country. The idea for Avanti began in 2003 and our first school was opened in 2008. Our vision was for a family of schools based upon our core principles of educational excellence, character formation, and spiritual insight. We now have close to 4,000 students and 450 members of staff across our family of 10 schools (five primary, one secondary, and four all-through) with three more schools in pre-opening.

Avanti has a proven approach to school development and improvement, with excellent pupil outcomes across our schools for example our primary school outcomes are amongst the top 10% in the country at Key Stage 2.



Reviews of Avanti

"The provision for pupils' spiritual, moral, social and cultural development is exceptional.

School leaders and governors, through the Avanti Trust, are wholly committed to ambitious outcomes for all pupils."

Ofsted

Office for Standards in Education, Children's Services and Skills

"Thank you for welcoming me to the school today. It has been inspiring to meet staff and students so engaged in learning. My congratulations to everyone involved in the conception and opening of this splendid premises."

Damian Hinds

Secretary of State for Schools

"As a parent an important aspect of education is the level of teaching. I knew as a new school, they had the opportunity to source and select the best teachers to deliver the curriculum. The teachers we have in the school at present are brilliant. They come with vast experience in their respective areas and they also have the same goal – for the school to succeed and children to excel."

Parent

Avanti Parent

"Being at Avanti makes work so enjoyable and a place that I look forward to going to work everyday, the environment is perfect not only for academics but for spiritual insight."

Teacher

Teacher at Avanti

"Avanti Fields is a place I can happily call my second home. The environment captures all aspects of a quality education where everyone aspires to be the best versions of themselves and exceed their expectations. I couldn't image a friendlier, more pleasant and safer place to be inspired to learn in."

Student

Avanti Secondary School



VIPs



HER MAJESTY THE QUEEN

Avanti schools have hosted Her Majesty The Queen, Justine Greening (Secretary of State), Nick Gibb (Minister for Schools), Lord Nash and Michael Gove (Secretary of State) and even Swami Ramdev who came to teach the students yoga!

Students from Avanti have performed at venues as diverse as 10 Downing Street to Wembley Stadium for PM Narendra Modi and PM David Cameron, and the Royal Festival Hall.



DAMIAN HINDS, SECRETARY OF STATE



PRIME MINISTER NARENDRA MODI & PRIME MINISTER DAVID CAMERON



PRIME MINISTER TERESA MAY AT DOWNING STREET



SWAMI RAMADEVA



PRIME MINISTER NARENDRA MODI

Applying for a Place

In the event of receiving more applications than there are places, please refer to the Admissions Policy for our oversubscription criteria.

SCHOOL ADMISSIONS POLICY

<https://avanti.org.uk/avantipark/admissions/>



AVANTI PARK SCHOOL



Staying Connected

AVANTI SCHOOLS TRUST

The Trust website is a good starting point to learn about the Avanti vision at play in our schools. Short videos are also online.



www.avanti.org.uk

HIGHLIGHTS AND UPDATES

The Avanti Life magazine brings you the very best of what's happening within our family of schools. Also available in print.



www.avanti.org.uk/life

SCHOOL LIFE IN DETAIL

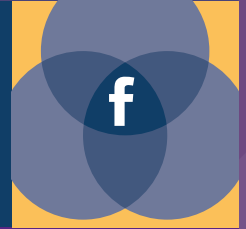
The school website offers up-to-date information on key aspects of school life, from ethos to admissions; school lunches to job opportunities.



www.avanti.org.uk/avantipark

SOCIALISING

We use Facebook as a shared community page where many school and Trust highlights are broadcast – a great way to stay informed and in touch.



www.facebook.com/avantischools

Avanti Park School

Park road
Frome
Somerset
BA11 1EU

Phone 01373 832 804
Email avantipark@avanti.org.uk
Website www.avanti.org.uk/avantipark



AVANTI PARK
SCHOOL

A Journey of
Self-Discovery