



AVANTI PARK
Excellence · Virtue · Devotion

ISSUE 3
13th November
2020

SCHOOL CONTACT DETAILS

Email:

avantipark@avanti.org.uk

absence.ap@avanti.org.uk

lunches.ap@avanti.org.uk

Tel: 01373 832804

MESSAGE FROM THE PRINCIPAL

The Avanti Park Post

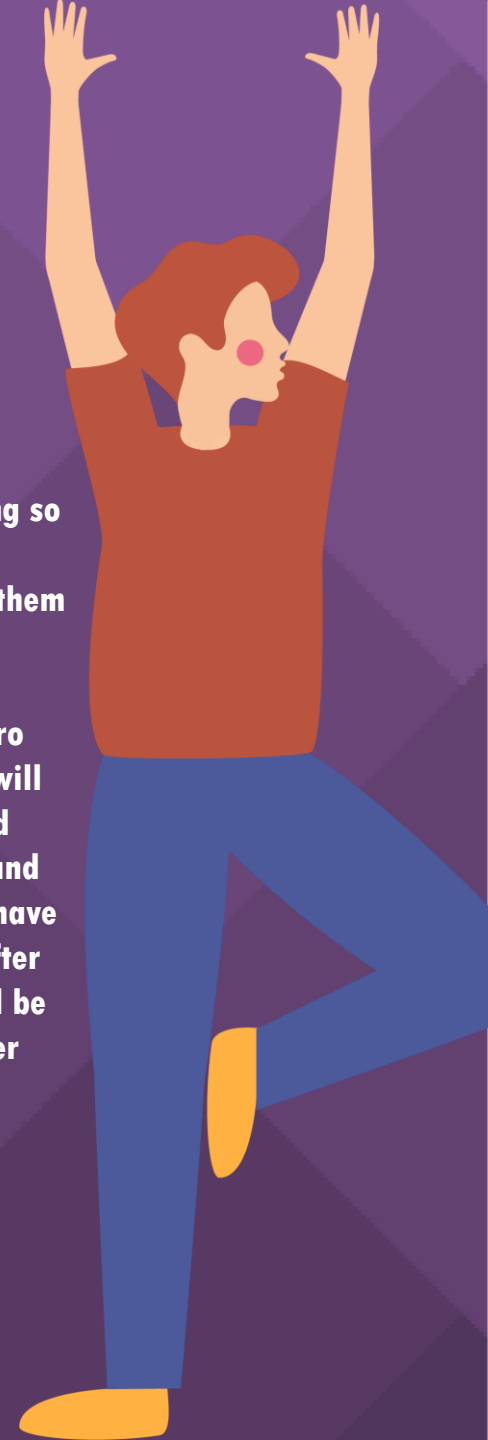
Dear parents and carers,

Thank you so much for your support with the Christmas Shoe Box appeal. It has been lovely seeing so many children coming into school excitedly with their beautifully wrapped boxes. I know your generous contributions will make a real difference to the children and young people who receive them this Christmas.

This term we have welcomed several new staff to our Avanti Park staff team. Magdalena Cabellero has joined us as a teaching assistant and Natasza Secombe as a lunchtime supervisor. Natasza will also be providing vital additional cleaning during the day to keep the site Covid safe for staff and pupils. Lastly, Jen McMillan started on Monday as Assistant Head Teacher responsible for SEND and Inclusion. I am also very pleased to announce that Kate Crosby, Jane Miller and Laura Van Dyke have successfully secured permanent teaching roles at the school. Two new teachers will also join us after Christmas: Laura Doran as Class Teacher and Clare Herrera as Key Stage Two Phase Lead. We will be in touch with parents in the next few weeks if your child is going to have a change of teacher after Christmas.

Have a lovely weekend

Abby Atkins



Primary School Update

Dear Parents and Carers,

The last two weeks in primary have brought with them the launch of each year groups' new projects. From Year 1's 'Alien Crash Landing' to Year 3's 'Predator' theme day, the children have really engaged and enjoyed learning about a brand-new topic. Key Stage 1 enjoyed an immersive workshop to support their learning around Buddhism, their religion of focus for this half-term. The children in Year 5 have enjoyed the launch of their new project 'Off with her head' and its focus on Tudor history - with only two weeks into the project a Tudor shop has already been set up and some beautiful portraits have been drawn.

We are incredibly proud of our children in the Reception classes (Maple and Pine) as they continue to develop their independence inside the classroom and in the outside learning area. As every week passes, we are seeing the children develop and start to take more ownership over their learning - enjoying themselves whilst making some new friendships in the process!

Our school council have been as busy as ever and have gathered the ideas and opinions of their peers. In our last meeting the representatives voted for their 'wish-list' of items. These were all focused on school improvement - ranging from passionate voices championing respect for our environment and providing more enrichment opportunities to name two. With the formation of the new PTFA we will look to see how we can support some of the very worthwhile causes shared.

I would like to say a special thank you to all the families who have been able to contribute to the Christmas Shoebox appeal 2020. The kindness and generosity of this will have such an impact. Not only is this a great project to teach our children about empathy but is an exercise in understanding and appreciating the power of giving and helping others.

Have a lovely weekend.

Luke McKinley



Student News:



Diwali:

Students in Reception celebrated Diwali today by wearing bright clothes, making Diwali inspired craft and inviting parent Mahesh to tell the children a Diwali story in the outside classroom.



Make It:

We are delighted to have Jon Backhouse working with some of the older students on individual projects in the woodwork room. In their first week some of the students made stools.



Wrap around Care

Wrap Around Care Update

As promised, we are planning on before and after school care starting at Avanti Park after the Christmas holiday. We are working with a local provider who has recently also set up 'wrap around care' in other local schools. The cost is likely to be around £4 an hour. When plans have been finalised we will be in touch to let you know how you can book places.

This may be done via our Parent Portal Arbor, so please make sure you have downloaded the app and created your account. If you have not yet already done so

Please use this link to access the Parent Portal: <https://avanti-park.uk.arbor.sc> - once you have clicked on the link you will need to click on **first time user** and follow the instructions.



Dates for your Diary

NOV	Mon	Tues	Weds	Thurs	Fri	Sat	Sun
Week A	2 nd Back to school	3 rd	4 th	5 th	6 th	7 th	8 th
Week B	9 th	11 th	11 th	12 th Shoebox's to be returned	13 th	14 th	15 th
Week A	16 th	17 th	18 th	19 th	20 th	21 st	22 nd
Week B	23 rd	24 th	25 th	26 th	27 th	28 th	29 th
Week A	30 th	1 st DEC	2 nd	3 rd I see purple day	4 th	5 th	6 th

Whole school attendance so far this year 92.7%

Today's attendance 92.2%

Number of students late this week:
21



AVANTI PARK
Excellence · Virtue · Devotion

Friends of Avanti Park

The days may be growing shorter and darker, and we may be in lockdown, but the PTFA cauldron of good intentions and festive ideas and has been bubbling away, all thanks to the magic of zoom! Things to keep an eye out for over the next few weeks include:

- 1) Christmas Wreath-Making – We hope to offer this hugely popular activity for family bubbles in time-allocated slots at the school on Saturday 12th December (if Covid-19 restrictions at that time allow). Look out further details and a link to the booking form in our future emails.
- 2) Community Directory – We are in the process of putting together a directory of skills, services and businesses that we can all share and benefit from as a school community. The directory will also include after school clubs, and Frome-based charities that offer social and economic support. Look out for our emails for further details.
- 3) Festival Survey – We are close to launching our survey on which Steiner festivals you'd like to see continue in our new school, as well as any suggestions you have for other festivals/fundraisers. Look out for our email with a link to the survey.

Wishing you all a lovely weekend,

Avanti Park PFTA

avantiparkptfa@gmail.com



Fundraising



FSCI
Foundation for Social
Change and Inclusion

Christmas Box

2020



Everyone loves to receive a present at Christmas. But for many vulnerable children and families in Southeast Europe Christmas serves as a reminder of their isolation and poverty.

Will you help us to spread a little joy this Christmas?

By supporting FSCI's Christmas box appeal you can help to spread joy to thousands of people, fight poverty and prevent modern slavery.

Bring completed boxes to: **SCHOOL**

Deadline: **12.11.20**

For more information ring 01722 580192 or e-mail rich.parsons@fscinet.org

www.fscinet.org

FSCI (UK) is a Registered Charity in England & Wales (1170914)
FSCI is a Registered NGO in Bulgaria (175633540)



We have had a fabulous response to the FSCI Shoebox appeal. Many thanks to the children and parents who have taken time to put together a shoebox. These will make a huge difference to someone's Christmas. The effort is really appreciated.



Music Tuition



The contact card for Avanti Park School Music Teachers is framed by a decorative border of musical notes. At the top center is the school's crest, which features a shield divided into four quadrants: a lion in the top-left, a tree in the top-right, a book in the bottom-left, and a sun in the bottom-right. Below the crest, the text 'AVANTI PARK' is written in a large, bold, orange serif font, with 'SCHOOL' in a smaller, orange sans-serif font directly underneath. Below this, the title 'Music Teachers' is centered in a black sans-serif font. The card then lists six teachers, each with their name, instrument, phone number, and email address, all in a black sans-serif font. The names and instruments are in a larger font size than the contact details.

AVANTI PARK
SCHOOL

Music Teachers

Andy Hawkings - Guitar
07927 278 697
andyhawkings@hotmail.com

Heather Truesdall - Cello
heather.truesdall@gmail.com
07515 475 170

Josh Lee - Ukulele
joshleesmp@gmail.com
07414 665 382

Anne Bourne - Singing
holisticvoice@icloud.com
07939 134 390

Linda Lethbridge - Piano
lindianajane@yahoo.co.uk
01761 435 656

Mike McEly - Drums
macdaddy76@tinyworld.co.uk
07508 415 582

Avanti Park is very fortunate to have a number of wonderful Peripatetic Music who provide one to one music lessons during school hours.

If you are interested in music lessons for your child or for more information then please contact the relevant teacher using the details opposite.

Please note that there is a fee for these lessons and children who attend will be taken out of class for their music tuition.

Stay Safe, Be Well



Would you like to see
your child featured in
the Avanti Park Post?
Please complete the
photo consents on the
Arbor Parent Portal
to enable us to use
your child's pictures



AVANTI SCHOOLS
TRUST



AVANTI PARK
Excellence · Virtue · Devotion