



AVANTI PARK
Excellence · Virtue · Devotion

ISSUE 12
21st May 2021

SCHOOL CONTACT DETAILS

Email:

avantipark@avanti.org.uk

absence.ap@avanti.org.uk

lunches.ap@avanti.org.uk

Tel: 01373 832804

MESSAGE FROM
THE PRINCIPAL



The Avanti Park Post

Dear parents and carers,

As this will be our final newsletter of the half term it is a good time to look back and reflect on the last few weeks. The standout moment for me was last Friday at our first focus day of the year. We used this day to teach the pupils about India, raise awareness and funds for the 'Help India Breathe' campaign, and introduce the UN Sustainable Development Goals. These will form the basis of our focus days for next year. The day ended with a beautiful human rainbow made by all the pupils. This was a powerful image which has resonated with the whole Avanti Schools Trust and epitomised the Trust fundraising efforts. Thank you for your generous donations and your colourful outfit creations!

Next Friday we will say goodbye officially to our wonderful year 11 class. We will be giving them a send-off at school next week and we wish them well as they embark on the next stages of their lives and education. They are such a special group, and it has been a privilege to get to know them this year.

Finally, I want to wish you a restful break when half term finally arrives. Fingers crossed for sunshine!

Abby Atkins
Principal

Twitter: @AvantiSchools

Website: <https://avanti.org.uk/avantipark/>





AVANTI PARK
Excellence · Virtue · Devotion

<https://www.justgiving.com/campaign/indiabreathe>

Help India Breathe.

Secondary update



Transition Information:

Year 6:

There are two key dates for Year 6 transition coming up that we would like to let you know about:

- ***30th June 4PM - Year 6 Transition Meeting for parents and students***

This will be an opportunity for Year 6 students and parents to meet the secondary team and find out more about the systems and routines we have here at Avanti Park Secondary.

- ***Year 6 to 7 Transition Day - 8th July***

We are inviting our year 6's to join secondary for the day to get a feel for what it will be like next year.

Please look out for a letter from Mr Bayew with further details about these two events.

Year 8:

Transition to Frome college

Traditionally all the Frome middle schools coordinate their transition days for year 8 into year 9 at Frome College on the same day. This year Frome Transition Day is on the 8th July. This means that all Year 8 pupils who are going to Frome College will attend Frome College for the day for a Transition Day. Mrs Bell, their tutor will meet them there and spend the day with them.

This will be a fantastic opportunity for the students to get to know the school a bit better so it feels a bit more familiar for when they arrive in September full time. They will also be able to meet some of their teachers and learn about the systems and routines they have in place at the College.

If your son or daughter is not going to Frome College please get in touch with Mr Bayew to discuss plans for the day.

Year 11:

Nearly there!!!

One week to go!

You are all doing so well, keep it up!!

From Mr Bayew

When does my child do PE or Yoga?



Dates for your Diary

PE/Yoga Time Table 2021

Year Group	Class	Week A	Week B
Reception	Maple	PE Thurs Yoga Mon	PE Tues Yoga Mon
Reception	Pine	PE Mon Yoga Tues	PE Mon Yoga Mon
Year 1	Ash	PE Mon Yoga Tues	PE Mon Yoga Weds
Year 1	Oak	PE Mon Yoga Tues	PE Mon Yoga Weds
Year 2	Cherry	PE Tues Yoga Weds	PE Tues Yoga Tues
Year 3 & 4	Chestnut	PE Weds Yoga Fri	PE Thurs Yoga Fri
Year 3 & 4	Sycamore	PE Mon Yoga Weds	PE Tues Yoga Tues
Year 3 & 4	Rowan	PE Tues Yoga Mon	PE Weds Yoga Tues
Year 5	Cedar	PE Weds Yoga Fri	PE Weds Yoga Fri
Year 5	Holly	PE Thurs Yoga Weds	PE Thurs Yoga Fri
Year 6	Hazel	PE Thurs Yoga Mon	PE Thurs Yoga Fri
Year 7	7	PE Mon Yoga Fri	PE Mon Yoga Fri
Year 8	8	PE Tues Yoga X	PE Tues Yoga Weds & Fri
Year 11	9	PE Weds & Fri	PE Fri

MAY/JUNE	Mon	Tues	Weds	Thurs	Fri	Sat	Sun
Week A	24 th	25 th	26 th	27 th Lost property	28 th LAST DAY FOR YEAR 11	29 th	30 th
	31 st Half Term	1 st June Half Term	2 nd Half Term	3 rd Half Term	4 th Half Term	5 th	6 th
Week B	7 th Back to School	8 th All Parent Townhall	9 th Virtual meetings (discuss 20/21 classes)	10 th	11 th	12 th	13 th
Week A	14 th	15 th	16 th	17 th	18 th	19 th	20 th
Week B	21 st	22 nd	23 rd	24 th	25 th	26 th	27 th

*We return to school after Half Term on Week B!

KIT REMINDER:

Trainers - from year 3 upwards
Plimsols/Daps Reception -year 2
please



Lost property will be laid out for parents to look through after school on 27th May

Notices and Reminders

All Parent Townhall:

This event is for the full community of parents, inviting every parent to attend and explore the vision and goals for the school - a comprehensive presentation with plenty of time to interact and discuss the different elements.

Our desired outcome from this engagement is shared understanding on the vision and goals that school is working to improve and develop. Clear and agreed upon channels of communication and engagement for the upcoming year. A shared process for how we wish to deal with conflict or disagreement, should it arise.

Virtual Townhall: June 8, 2021 16.00, Register here:

<https://zoom.us/meeting/register/tJMqcO2grD0rGt3laRZhR1XK84tMVyo7mgqp>

INFORMATION REGARDING CLASSES NEXT YEAR!

On 9th June, we will be hosting virtual meetings with families to provide information regarding classes for the 2021-22 academic year.

The meetings will all be held via Teams using the link below with the timings as follows:

Current Reception and Year 1 parents and carers: 4:00 - 4:25 pm

Current Year 2 parents and carers: 4:30 - 4:40 pm

Current Year 3 & 4 parents and carers : 4:45 - 5:00 pm

Current Year 5 parents and carers: 5:05 - 5:20 pm.

Miss Robinson and Mr McKinley will hold the EYFS & KS1 meetings with Mrs Welling-Herrera and Mr McKinley holding the KS2 meetings.

More information will be shared in the coming weeks regarding transition activities for primary pupils taking place in July.

Microsoft Teams meeting

Join on your computer or mobile app

[Click here to join the meeting](#)



Word of the week

From next week, the EYFS, KS1 & KS2 will be starting a structured Word of the Week programme. This is based on research showing that one of the best ways to improve vocabulary and writing content is explicitly to teach vocabulary to all, with daily & weekly challenges to incorporate the word into writing etc. Of course some children will know some or all of the vocabulary already; this is about gradually building up and integrating everyone's word bank, orally and in writing.

Week commencing 24/5, Word of the Week:

EYFS: stinky

Y1: lively

Y2: television (rather than 'telly' or 'tv')

Y3/4: privilege

Y5: oblivious

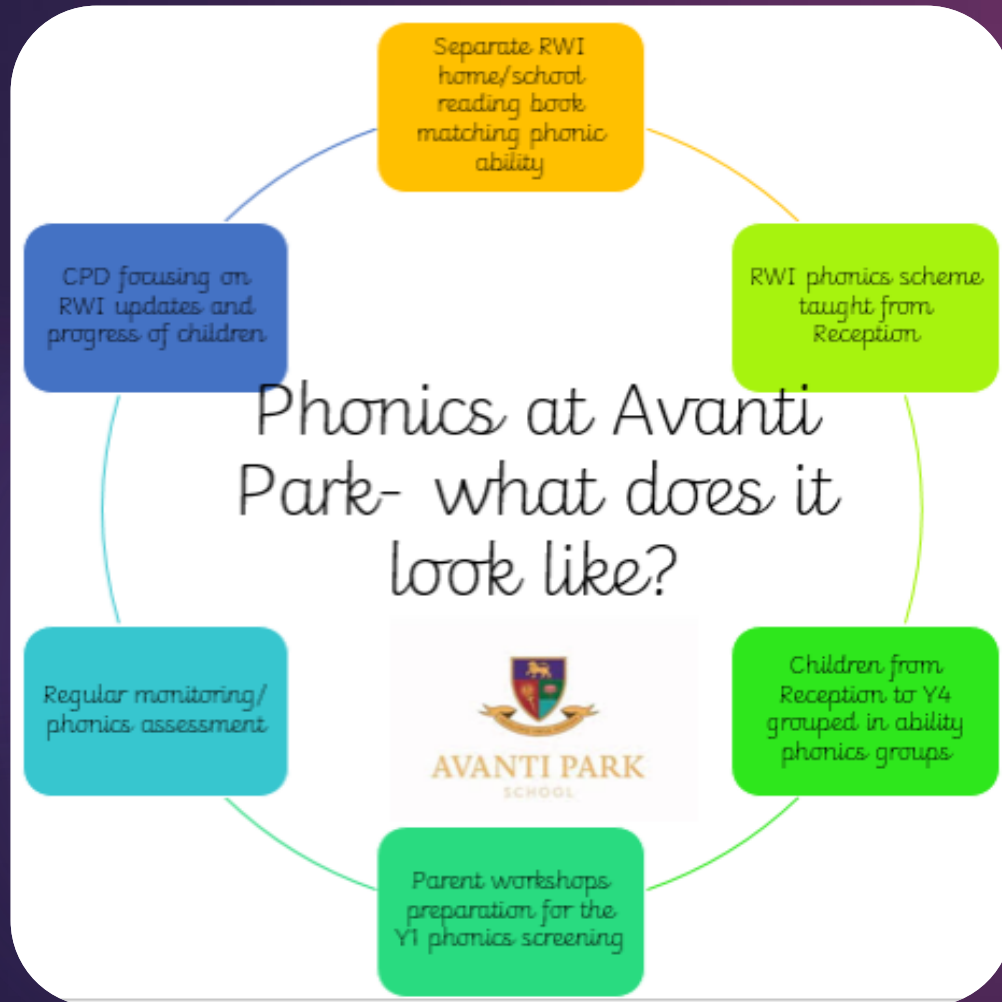
Y6: bewildered



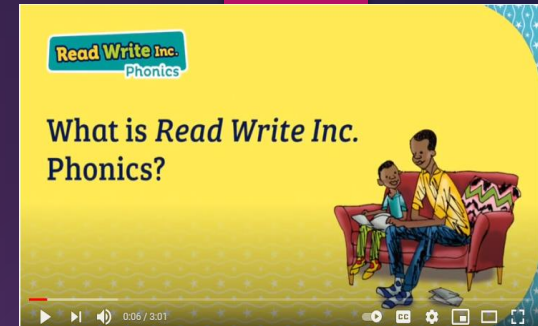
AVANTI PARK
Excellence · Virtue · Devotion



Reading at APS



Read, Write, Inc home support:
Click on the picture for the video link



News and updates



Our school library is currently being updated. Watch this space for pictures of our new and exciting space.



PTFA will be launching the 'buy a book' scheme to help with the library development.

Punctuality



PUNCTUALITY

Please ensure your children are in school on time for registration every day.
All children arrive for 8:40 am, except year 5 & 6 who arrive at 8:50 am.

It's lovely to see the children arriving on time and relaxed, to start the day.



Late arrivals affect the pupils' welfare, they miss vital time connecting with their classmates and teacher, and an opportunity to find out plans for the school day and occasionally the start of their first lesson.

We appreciate your efforts to tweak your preschool preparation, here and there, to make the difference between being on time or late.

If you are having any difficulties in getting the children to school on time and if you would appreciate support, please do feel free to contact us.

Kathryn Mason

Celebration of Learning



Children in Maple class made space helmets and travelled to their moon as part of their topic 'what happens while you are asleep'.



17/05/21

Can I divide a 4-digit number by a 1-digit number using short division (with remainders)?

- a) $3047 \div 5 = 609 \text{ r}2$ ✓
 b) $2306 \div 3 = 768 \text{ r}2$ ✓
 c) $04937 \div 6 = 822 \text{ r}5$ ✓
 d) $1098 \div 2 = 549 \text{ r}0$ ✓
 e) $3209 \div 9 = 356 \text{ r}5$ ✓

$$\begin{array}{r} 0768 \text{ r}2 \\ 3 \overline{) 2306} \end{array}$$

$$\begin{array}{r} 0822 \text{ r}5 \\ 6 \overline{) 4937} \end{array}$$

$$\begin{array}{r} 0156 \text{ r}6 \\ 2 \overline{) 1038} \end{array}$$

$$\begin{array}{r} 0356 \text{ r}5 \\ 4 \overline{) 3259} \end{array}$$

Always/Sometimes/Never
True

When using the short division
written method to divide a
4-digit number by a 1-digit
number, the remainder is
greater than the divisor.

Never because $\begin{array}{r} 0715 \text{ r}1 \\ 6 \overline{) 4291} \end{array}$ and $\begin{array}{r} 4979 \text{ r}1 \\ 2 \overline{) 9959} \end{array}$ ✓

Why?

What would happen if

$$\begin{array}{r} 451 \text{ r}3 \\ 6 \overline{) XXXX} \end{array}$$

Never because if you get a larger remainder you will
add it to the quotient. ✓



AVANTI PARK
Excellence · Virtue · Devotion

20.05.21

LO: Can I divide a 4-digit number by a 1-digit number using short division (with remainders)?

a) $\begin{array}{r} 1784 \text{ r}2 \\ 6 \overline{) 7106} \end{array}$ $7106 \div 6 = 1784 \text{ r}2$ ✓

b) $\begin{array}{r} 1768 \text{ r}1 \\ 6 \overline{) 7009} \end{array}$ $7009 \div 6 = 1768 \text{ r}1$ ✓

c) $\begin{array}{r} 2728 \text{ r}2 \\ 4 \overline{) 8514} \end{array}$ $8514 \div 4 = 2728 \text{ r}2$ ✓

d) $\begin{array}{r} 1768 \text{ r}2 \\ 5 \overline{) 8842} \end{array}$ $8842 \div 5 = 1768 \text{ r}2$ ✓

e) $\begin{array}{r} 1327 \text{ r}2 \\ 7 \overline{) 9249} \end{array}$ $9249 \div 7 = 1327 \text{ r}2$ ✓

Solve the problems:

A school has 1,678 pupils.
Minibuses can transport 9
pupils. How many minibuses
are needed to transport all
the pupils?

Eggs are stored in boxes of
6. How many full boxes are
needed for 2,738 eggs?

$$\begin{array}{r} 0186 \text{ r}4 \\ 9 \overline{) 1678} \end{array}$$

187 minibuses are needed
to transport the children.

$$\begin{array}{r} 0456 \text{ r}2 \\ 6 \overline{) 2738} \end{array}$$

457 boxes are needed for
the eggs.



AVANTI PARK
Excellence · Virtue · Devotion



Year 2 Cherry
Rainforest in Geography -
Rainforest animals in oil and soft
pastels - as part of our topic
Scented Garden



★ shopping list. by Rosie
my magical
picnic will ★ have
★ I go see ★ strawberries
and ★ sinamom ★

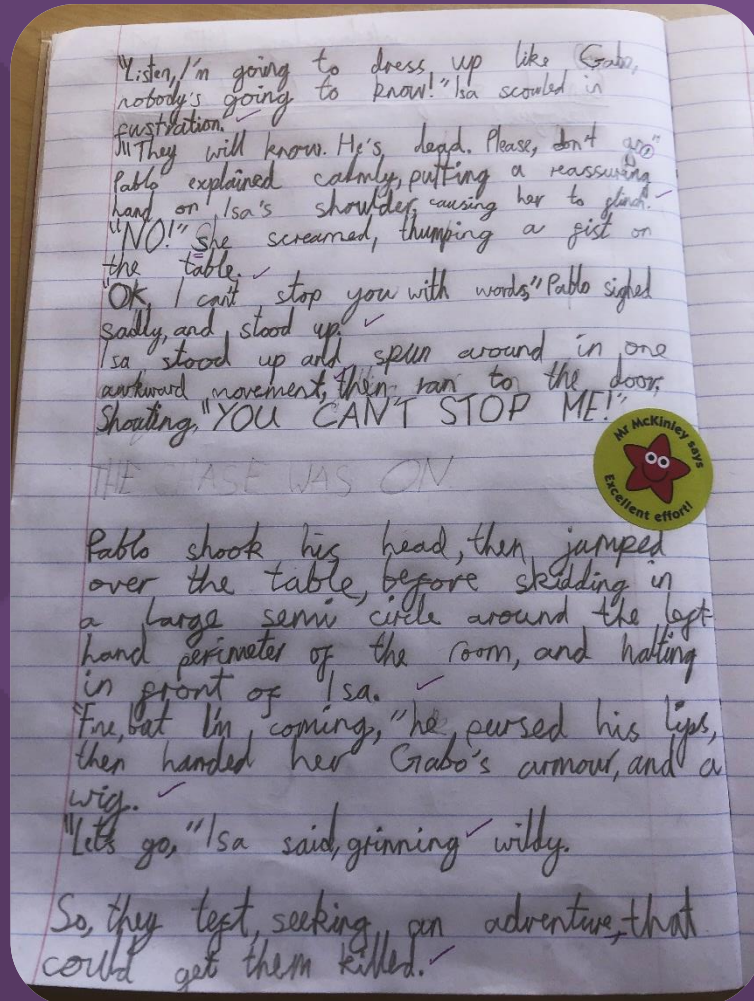
bulls ★ I ★ wood ★
reel by reel vlik
★ sun ★ rainbow -
sweetees ★ and
chocolate, can I ★ ★
bliss. my kumay?
★ Rosie

★ ★ ★ ★ ★
Name: Dahlia ★
Date: 13.5.21
My Perfect Midnight Feast -
★ ★ Shopping List
I would like to
have some biscuits
tailorreen and
★ strawberries
thank you
from Dahlia ★

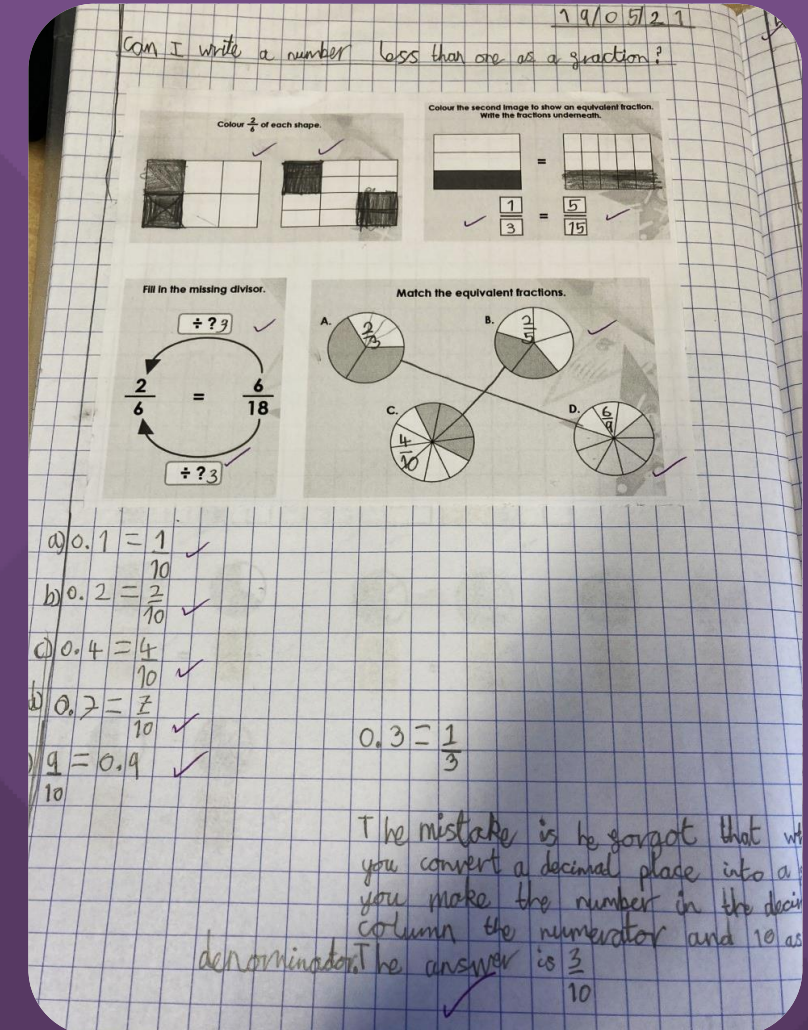
Celebration of Learning



Robin
Year 5
Holly



The children
in Year 5
have been
working
really hard
on their
reasoning
skills in maths
lessons.





Clubs and Wrap around care

	Monday	Tuesday	Wednesday	Thursday	Friday
Before School (Wraparound Care)	Wraparound Care - Provided by Child's Play UK: https://www.childsplayclub.co.uk/ 7.45 ~ 8.45	Wraparound Care - Provided by Child's Play UK: https://www.childsplayclub.co.uk/ 7.45 ~ 8.45	Wraparound Care - Provided by Child's Play UK: https://www.childsplayclub.co.uk/ 7.45 ~ 8.45	Wraparound Care - Provided by Child's Play UK: https://www.childsplayclub.co.uk/ 7.45 ~ 8.45	Wraparound Care - Provided by Child's Play UK: https://www.childsplayclub.co.uk/ 7.45 ~ 8.45
Lunchtime Clubs					
After School (Wraparound Care)	Wraparound Care - Provided by Child's Play UK: https://www.childsplayclub.co.uk/ 15.00 ~ 17.00	Wraparound Care - Provided by Child's Play UK: https://www.childsplayclub.co.uk/ 15.00 ~ 17.00	Wraparound Care - Provided by Child's Play UK: https://www.childsplayclub.co.uk/ 15.00 ~ 17.00	Wraparound Care - Provided by Child's Play UK: https://www.childsplayclub.co.uk/ 15.00 ~ 17.00	Wraparound Care - Provided by Child's Play UK: https://www.childsplayclub.co.uk/ 15.00 ~ 17.00
After School Clubs		Aerial Club ~ Years 7 and 8 ~ Aerial circus and hoop skills - £11.50 (15.30 to 16.30) Athletics Club ~ Years 3 and 4 ~ Free (15.15 to 16.00)	Gardening Club ~ Years 1 ~ 4 Learn how to grow food organically and have fun in nature £8 (15.15 ~ 17.00) zosiadumiat@yahoo.co.uk	Battle Cats ~ Years 3 and 4 ~ An Olympic Freestyle Wrestling Club for kids! £6 (15.15 – 16.15) go@battlecats.co.uk	

Circomedia Youth Circus Comes To Avanti Park School! Join our new circus classes in June

Circomedia is very excited to be coming to Frome after half term! Students aged 4-18 will have the opportunity to join our fun and exciting circus classes and learn a mixture of acrobatics, juggling, aerial skills, balancing, and more.

We've been running Youth Circus classes in our hometown of Bristol for many years, helping children discover new skills, build their confidence, and find a passion for circus and performance. With help from Avanti Park teacher Flora Alwen, we are now delighted to bring our classes further afield and welcome new students!

Find out more and book here:

www.circomedia.com/circomedia-youth-circus-in-frome



Location: School Hall, Avanti Park School, BA11 1EU

Term Dates: Friday 11 June - Saturday 17 July 2021 (6 weeks)

Friday Youth Circus (Ages 4-13) Avanti Park students only

3.15pm - 4.15pm	Reception - Year 2
4.15pm - 5.15pm	Years 3 - 5
5.15pm - 6.45pm	Years 6 - 8

Saturday Aerial Skills (Ages 10-18) Avanti Park and former Circus Stars students

10am - 11.15am	Beginners' Aerial Hoop Beginners' Aerial Silks
-----------------------	---

11.30am - 1pm	Improvers' Aerial Hoop Improvers' Aerial Silks
----------------------	---

For queries, email youthcircus@circomedia.com. We can't wait to see you in June!



CIRCOMEDIA

YOUTH CIRCUS IN FROME

JOIN OUR NEW CIRCUS CLASSES!

AVANTI PARK SCHOOL, FROME BA11 1EU

MIXED CIRCUS (AGES 4-13)

FRIDAYS 3.15 - 6.45PM

SPECIALIST AERIAL (AGES 8-18)

SATURDAYS 10AM - 1PM

TRIAL TERM: FRI 11 JUNE - SAT 17 JULY 2021

TO BOOK YOUR PLACE, FIND US ONLINE AT:

WWW.CIRCOMEDIA.COM/CIRCOMEDIA-YOUTH-CIRCUS-IN-FROME

CONTACT YOUTHCIRCUS@CIRCOMEDIA.COM



Child's Play Clubs UK

Child-led, play inspired, out-of-school care

Spaces
available
after half
term!



**Avanti Park
School**
**Before and After
School Care**

All staff CRB checked
Inclusive & friendly
Healthy snacks
Skilled Playworkers

Telephone Number: Sherree 07878 347 652

Website www.chilidsplayclub.co.uk

Email avanti@chilidsplayclub.co.uk

Student Voice!

Pupil Wellbeing and Attitudes towards school

This short survey has been designed to gauge how our pupils are feeling after returning to school. The last year has brought many challenges to our pupils and to best support their needs. Please click on the link below to access the survey.

All surveys to be completed by 28th May

<https://forms.gle/PUgWFXPdrN8rfmdKA>



AVANTI PARK
Excellence · Virtue · Devotion

STUDENT VOICE & FEEDBACK

AVANTI PARK SCHOOL

At Avanti Park School, we place great importance on ensuring that all pupils have a voice and that this voice is heard and listened to. As learners and members of our school community, pupil's **voices**, **insights** and **feedback** are **vital** in making sure our school is welcoming, supportive and forward-facing.

The diagram below illustrates how we give pupils the opportunity to feedback. Each aspect has been carefully designed and serves a collective purpose – to **listen** and **engage** with all of our pupils.



Termly online surveys

These are Google form surveys which are shared with parents and carers to be completed at home with your children. These surveys will typically ask the same questions each time to show and highlight if there is a change in thinking or understanding over time. These provide us with important termly information from which we can review and plan our support to pupils.

Half-termly conversations with a Curriculum Lead

Taking place in small groups of approximately 4-6 pupils, these conversations will review both the academic and personal development aspects of our curriculum. Conversations will focus on our behaviour for learning values, learning from previous terms and how much has been remembered, enjoyed and understood and also cover what effective learning looks like.

In-class feedback forums

These are whole-class conversations and can take place at any point during the academic year. Their core purpose is to provide the children with a space to discuss and share their thoughts on their learning, what's working well, what's supporting them in school and importantly how we can support them further.

Uniform Requirements Sept 2021

Reminder: School uniform is compulsory from September 2021.



Primary Uniform:

- White Polo shirt
- Grey Skirt or shorts, knee length
- Grey Trousers, of a classic wider style: straight, with no visible zips, studs or buckles.
- Navy jumper with school's logo
- Avanti School Cardigan (Optional)
- Bookbag with school's logo (Optional)
- Infant Rucksack with school's logo (Optional)
- Black leather or leather style shoes, trainers and boots are not acceptable

DEADLINE: There is a current lead in time of **8 to 9 weeks** for school uniform. Please bear this in mind when ordering for September, especially if there is a possibility of uniform needing to be returned for other sizes. Please ask at the school office to view sample sizes.

Secondary Uniform:

- White school shirt, worn tucked into trousers/skirt
- Avanti tie, worn traditionally – Short ties and/or large knots are unacceptable
- Grey Skirt or shorts, knee length
- Grey Trousers, of a classic wider style: straight, with no visible zips, studs or buckles.
- Navy jumper with school's logo
- Avanti Fleece jacket (Optional)
- Avanti Rucksack (Optional)
- Black leather or leather style shoes, trainers and boots are not acceptable

**Order
NOW for
Sept!!**

[Brigade School Ordering Form](#)



PE Kit (Primary and Secondary):

- White PE Polo Shirt
- Navy School PE shorts or skirt
- Sports Trainers/plimsoles
- Navy tracksuit bottoms (Optional)
- Avanti Sweatshirt (Optional) or navy sweatshirt - not hoody!

Essential Items:

- Weather appropriate clothing (raincoat or umbrella if necessary)
- A waterproof bag/rucksack
- PE Kit
- Secondary Pupil Stationery: Two black or blue pens, green pen, pencil, ruler, rubber, colouring pencils.

Thanks again to everyone who took the time to respond to the festival survey we shared earlier this year. Many responses highlighted the importance of seasonal festivals to nurture a deep connection with nature. There was also a strong desire for a range of cultures to be represented.

For the next school year (2021/22) the PTFA will be working with the school to develop two seasonal festivals. These festivals – one towards midwinter and one in summer – will be repeated each year. We are hoping to make something beautiful that will be meaningful to everyone at the school. The new festivals may draw on other festival traditions but won't be wholesale repetitions of other festivals. If you are interested in helping to imagine and plan these new festivals with us, please get in touch.

In addition to the two seasonal festivals there will also be two whole-day school festivals each year which will 'bring the world to Avanti Park'. These festivals will be different each year and will offer vivid opportunities for in-depth learning and engagement with a range of world cultures and faiths. In 2021/22 the festivals will be Chinese New Year and Day of the Dead.



Local Recruitment ~ FLP



Parent and Family Support Advisor (PFSA)

Grade 12 – £22,183 to £25,481 pro-rata per annum

37 hours per week, term time only, although some flexibility in hours may be considered for the right candidate

Fixed-term contract to start as soon as possible and run until 31 March 2022

Frome Learning Partnership is seeking to employ a skilled and motivated PFSA to join its Child and Family Support team in September. This post will involve working in a variety of settings, including in schools, the community and family homes.

Working 37 hours per week, the post-holder will carry a caseload of approximately 20 children and will work to support them and their families make positive and sustainable change. Multi-agency working will be at the core of this work, but the ability to work independently is also essential.

The successful candidate will:

- Be prepared to work with children and families within their homes and other venues in and around Frome
- Be able to demonstrate creativity and flexibility in their approach to engaging families, identifying family strengths, assessing their needs and supporting them to make sustainable, positive change
- Have excellent interpersonal and communication skills with the ability to communicate clearly and appropriately with pupils, their families and supporting professionals
- Have experience of working with and engaging children and young people with complex needs
- Be able to work both collaboratively within a team and independently
- Be able to identify unmet needs and risks surrounding pupils and respond to them appropriately, in accordance with local area safeguarding policies and guidance

Frome Learning Partnership is comprised of 19 schools in and around Frome and is responsible for over 4,500 pupils. The provision of education for children requiring non-mainstream learning is a statutory function, for which the Partnership has been responsible since September 2018.

If you would like more information or to request an application pack, please email hmay@educ.somerset.gov.uk or ring 07990 084 092. Applications received after the closing date will not be considered.

Stay Safe, be well.

THANKYOU to the very kind parents who provided cakes for staff on Inset day. They were very gratefully received

Please remember to label ALL school items (bags, clothes, bottles, lunchboxes, coats etc)

Digital Platforms



AVANTI SCHOOLS
TRUST



AVANTI PARK
Excellence · Virtue · Devotion