



AVANTI PARK
Excellence · Virtue · Devotion

ISSUE 20
12th November
2021

Would you like to see
your child featured in
the Avanti Park Post?
Please complete the
photo consents on the
[Parent Portal](#) to
enable us to use your
child's pictures

MESSAGE FROM THE
PRINCIPAL



The Avanti Park Post

Dear parents and carers,

Welcome to this edition of the Avanti Park Post. We have had a busy two weeks since the start of this term. The Day of the Dead festival was a huge success and the children engaged beautifully with the meaning behind this. I was unfortunately unwell and so missed it, but I was really touched to see the wonderful pictures and words on the shrine when I returned to school. Thank you to those parents who baked the bread to share as part of the day and thank you to Alison Armstrong, our year 6 and Avanti Way Lead, who arranged and coordinated the whole day.

I hope you have time this week to walk through our poppy remembrance field. Liz Clarke has done a wonderful job preparing this and all the children will have a chance to visit and spend some time reflecting this week.

Have a wonderful weekend

With best wishes

Abby Atkins

SCHOOL CONTACT DETAILS

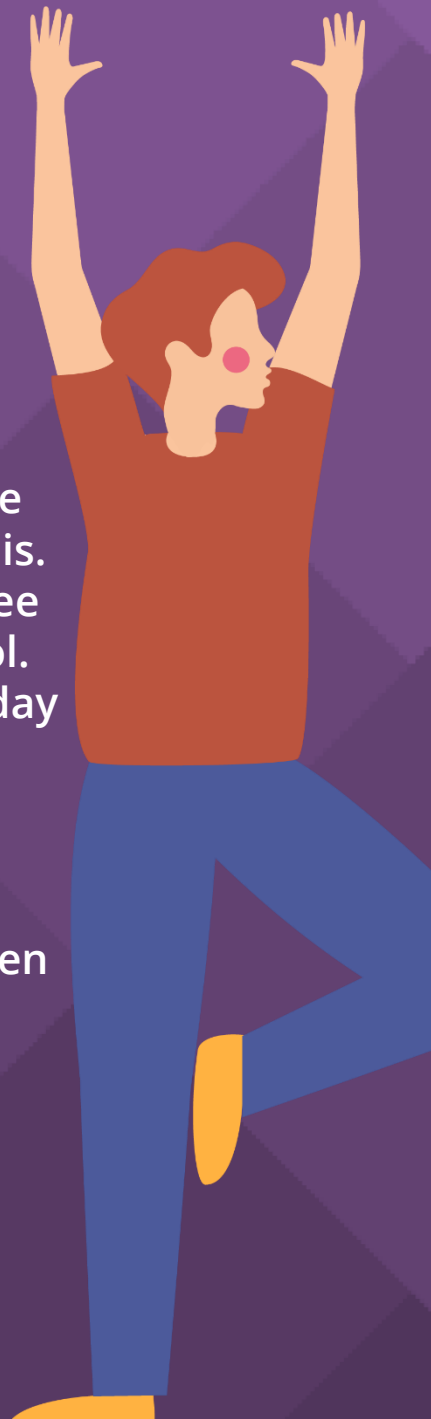
Email:

avantipark@avanti.org.uk

absence.ap@avanti.org.uk

lunches.ap@avanti.org.uk

Tel: 01373 832804



Dates for your Diary

Curriculum Updates:

We will be hosting the second focus day in this year's focusing on 'No Poverty'. The focus day will be taking 26.11.21 with a representative from 'Fair Frome' speaking our pupils in their phase groups. They will explain who are, what Fair Frome does, how they support the local community around us and how we can all work together poverty in all its forms.

To support the local communities, we are asking for food donations from those in our school community who are and able to do so. The food donated will go to the local bank run by Fair Frome and will be a tangible way in pupils can work together to support their local alleviate the struggles of food poverty. We ask that only perishable / long-life food/s are donated. Please send into school with your child where they will then be our donation tables at the entrance of Chantry before donated to Fair Frome.



Communication Updates:

Assessment Workshop for Parents (Virtual)

16.11.21

5:00-6:00pm

Please use the link below:

[Click here to join the meeting](#)

Virtual open day for prospective on 24th November. We are also holding a Teddy Bears Stay and Play on the 2nd Dec for all prospective Reception/Nursery children (Sept 2022 start)

Please visit our website using the link below to book a place.


<https://avanti.org.uk/avantipark/>

Attendance and Lateness



Our Whole school Attendance for this week:

Monday	Tuesday	Wednesday	Thursday	Friday
92%	89.7%	91.1%	88.1%	inset

 As we move into the darker mornings of Autumn and Winter, a little reminder that all children need to arrive into school on time.

 We have had an increased number of late arrivals recently.

① We would be grateful if you would adjust your morning routines and commit to a prompt arrival for your child/children. We understand that on rare occasions, something may happen that means a late arrival. However, this should be rare, and not the norm.

✓ Children are expected to be in their class for 8:45, the gate opens at 8:40 a.m. The main gates close at 8.50. It is important that students have a chance to settle in before lessons begin and we also need to minimise the disruption to both classes.

Covid-19

😊 Thank you for all your efforts to support your children with their regular and consistent school attendance, we are aware it is sometimes easy and sometimes challenging for all sorts of reasons.

If your child has one covid symptom, (raised temperature or persistent cough or loss of taste or smell) please follow the NHS advice:

<https://www.nhs.uk/conditions/coronavirus-covid-19/symptoms/coronavirus-in-children/>

😊 If your child needs a PCR, there is a walk in, drive in test centre in Frome at top of North Parade. Book online for the test, go for the test at appointment time, and you do the test on your child. Results generally come back in 24 hrs. This is quicker than postal tests.

If you are not sure about whether to send your child in, please do call the Covid helpline on 119.

Maple:
Kotaro

Pine:
Atlas

Cherry:
Baxter H.

EYFS/KS1
Craft:
Roman

EYFS/KS1
PE:
Dahlia Y-G

KS2
Yoga:
Rowan T.

Ash:
Issei

Oak:
Enki-Du

Chestnut:
Jasmine

Cedar:
Saraswathi

EYFS/KS1
Yoga:
Thomas J.

KS2 PE:
Adam T.

Beech:
Lucy

Holly:
Orla

Sycamore:
Lucas

Rowan:
Ben

Star of the Week W/C 01/11

Year 8:
Felix

Year 7:
Tallis

KS2
Craft:
Isla. M

Avanti Park School

Maple:
Maia-
Leigh

Pine:
Mina

Cherry:
Sophie
P-B.

EYFS/KS1
Craft:
Ivy Z.

EYFS/KS1
PE:
Elliot D-J

KS2
Yoga:
Rudi D.

Ash:
Dylan

Oak:
Leo Z. &
Jaga

Chestnut:
Eve

Cedar:
Max W.

EYFS/KS1
Yoga:
Toby H.

KS2 PE:
Oscar
M-D.

Beech:
Raphael

Holly:
Isla

Sycamore:
Sienna

Rowan:
Ella H. &
Aryon

Star of the Week W/C 08/11

Year 8:
Laurie

Year 7:
Vinnie

KS2
Craft:
Dom P.

Avanti Park School

Yr 7 Trip to Wessex Water Education Centre

Friday 19th November

In Geography we are learning about how humans use natural resources and this visit is relevant to our learning on the hydrosphere and water management.

Cost: The cost of the trip will £12 per student. We are able to support families in receipt of free school meals and the cost will not be a barrier to any student participating so please get in touch if you need support for this. Payments will be made via Arbor.

Departure: From School – Students to arrive as normal at 8:45 AM

Return: Pupils will arrive back in time for 3:15 PM and normal close of school.

Travel: We will travel in a mini-bus driven by Avanti Park staff

What to Bring: Normal School Uniform – Packed lunch and snack – Raincoat

Any Questions please contact Mr Bayew

House keeping & notices

PLEASE LABEL YOUR CHILDS UNIFORM

Please, please, please can we remind you to label ALL school items. We are finding lots of 'lost' jumpers that have either no name, or names that have been written in biro which has rubbed off! If using pen please use a permanent marker or order labels

MAKE SDG#1 A REALITY

End poverty in all its forms

For everyone, for good!

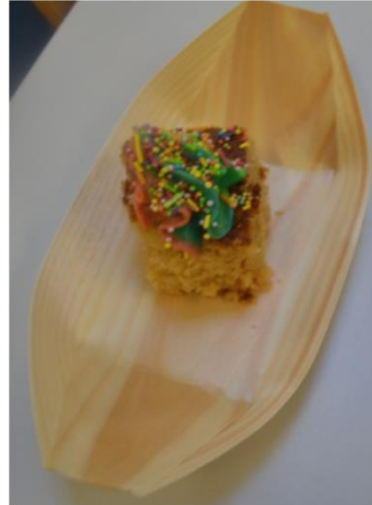
Focus Day #2
Avanti Park School
26.11.21



Day of the Dead



AVANTI PARK
Excellence · Virtue · Devotion





Everyone loves to receive a present at Christmas. But for many vulnerable children and families in Southeast Europe Christmas serves as a reminder of their isolation and poverty.

Will you help us to spread a little joy this Christmas?

By supporting FSCI's Christmas box appeal you can help to spread joy to thousands of people, fight poverty and prevent modern slavery.

Shoebox Appeal

Avanti Park are supporting FSCI by asking families to put together a shoebox for a child who is suffering from poverty. Leaflets have been sent home with your children but visit [CLICK HERE](#) for more details.

Please bring your boxes to school by 22nd NOV

why...

we hear you

**Cancer
Counselling**

We raised a fantastic £168 as part of our non-uniform day for local Charity We Hear You. Your kind donations will help support families who have been affected by life limiting conditions. Thank you to everyone who took part.

Over £400 was raised in the recent PTFA Bake and Book sale! Thank you to everyone who, baked goods, donated and helped on the day

WARHAMMER CLUB

DAY: MONDAY LUNCH TIMES

TIMINGS: 12:15-12:45

LOCATION: U1

WITH: MR BAYEW

**NEW
CLUB**



**YEARS
5-8**

**WARHAMMER
40,000**



GOVINDA'S
Nagpur School, India

Flavour School Programme

(Autumn 2021)

Govinda's is organising the Flavour School programme in all Avanti primary schools

Who is it for?
Reception and Key Stage 1

About the programme

5 SENSES

1. A programme of sensory food education lessons for children. All about exploring food and flavour through the five senses: sight, touch, smell, hearing and taste.

2. The aim is to increase children's curiosity, confidence and willingness to try new foods.

3. Grow familiarity and liking for healthy foods through first-hand sensory experiences with real live produce.

4. Build vocabulary, and support children to describe and share their sensory experiences in conversation.

5. Find pleasure and joy in food and flavour sensations.

GOLDEN RULES

1. No one has to try anything if they don't want to

2. No one has to like anything

We'd really appreciate your help to spread the word about this programme and share photos or evidence of the flavour school activities that you do with your child at home (materials to be sent to the parents) at govindas@avanti.org.uk

THANK YOU

Dear Parent/Carer,

Your child is having some sessions of a new kind of food education this term called Flavour school programme, organised by our school catering company Govinda's.

This is based on a system of food education called Sapere. The idea is to help children:

- Have positive experiences with vegetables and fruits.
- Get to know their own senses and learn to 'try' foods with all five senses.
- Increase the variety of the foods they can name and want to eat.
- Be brave about trying new foods (but also to know it is fine not to like them).
- Learn that food is something sociable and fun that can be shared with friends.

The programme involves a number of different exercises which help the children become confident with new vegetables. We may also be doing experiments with smelling foods and touching vegetables and fruits hidden in the bottom of socks/ containers/ blindfolded. We hope that by the end of this course of lessons, your children will become more open to exploring new foods at home as well. The lessons involve direct contact with a number of fresh ingredients, almost all of which are vegetables or fruits.

I will send out more information for parents, as we start with our sessions. If you have any questions, please feel free to contact me. Happy to help 😊 Thanks for all your help & enthusiasm.

Have a lovely day.

Arpita Jain,

Nutritionist and Trainer

(Govinda's Ltd., Avanti Schools Trust)

Mayor's Christmas Card Competition 2021

*all
GOOD WISHES
and Hearty
Greetings
for Christmas and
the New Year.*

Do you go to school in Frome?
Would you like the chance to
design the Mayor's Christmas
card?

The Mayor would love to see
your creativity around the
theme 'Empowerment'. What
does it mean to you? Activism,
standing against bullies or racism
or standing up for what's right.
Don't forget to put a Christmas
twist on it.

For full details visit
frometowncouncil.gov.uk
or call 01373 475572

Good luck!

FrOme
TOWN COUNCIL

Mayor's Christmas Card Competition 2021 Guideline Sheet

- Open to children up to the age of 12
- This year the card will be an e-card
- It should be A4 in size (just fold an A2 sheet in half)
- It must be your own original image
- Please use colours (be as creative as you dare!)
- Theme – 'Empowerment'
- What does empowerment look like to you? This could mean standing up for what is right, activism i.e. supporting the environment, standing up to bullies, standing alongside the LGBTQ+ community or standing against racism. The choice is yours.
- Don't forget to make it Christmassy
- We can only accept entries from children if they either live in Frome or go to school in Frome so those children who live in surrounding parishes such as Nunney or Beckington can only enter if they attend school in Frome.

There will be prizes for 1st, 2nd and 3rd places

Closing date for entries is Monday 22 November

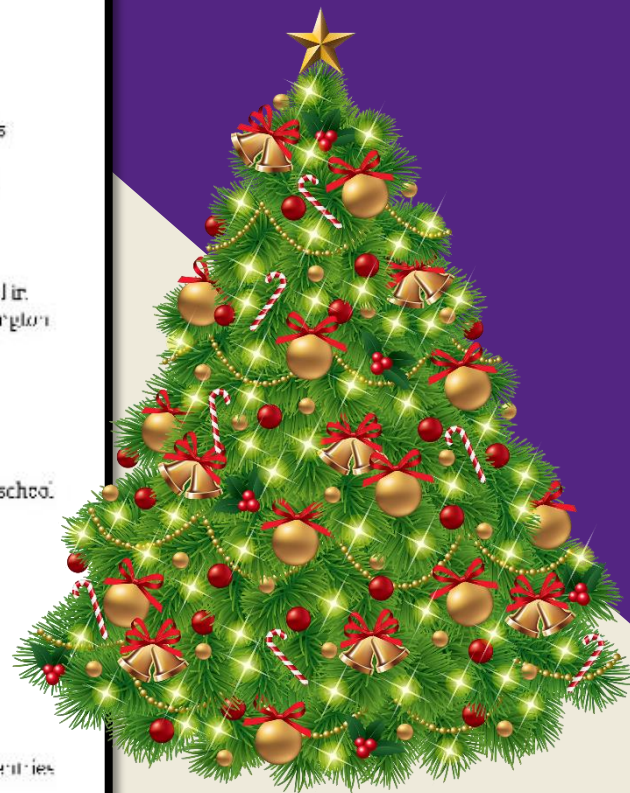
Please remember to write the name of the child, their age, address and the name of the school on the back of each entry.

Please send your entries to:

Mayor's Christmas Card Competition
Frome Town Hall
Christchurch Street West
Frome
BA11 1FR

We hope to be able to display all entries in the Town Hall in December. Unfortunately, no entries can be returned.

If you would like any further information please contact Laura Flaherty, Executive Assistant to the Town Clerk and Mayor at Frome Town Council - Lflaherty@frometowncouncil.gov.uk or 01373 475572



Special Thanks

We are continuing our “Special Thanks” scheme whereby parents, guardians, and carers are able to nominate and recognise staff for their efforts for supporting members in our Avanti community. This scheme was piloted at Avanti Park last year and made a real difference to our staff and their wellbeing.

To nominate a member of staff, please click on the following link:

<https://avanti.org.uk/avantipark/parents/staff-nominations-for-special-thanks/>



AVANTI PARK
Excellence · Virtue · Devotion

The poster is festive with a light green background, red and green stars, and three stylized Christmas trees (one green, one red, one green with white stripes). A red banner at the top left says 'BIG CHRISTMAS' with 'Everyone deserves' and 'From' above it, and 'Get Together' and 'a good Christmas' below it. The main text 'Free Christmas lunch hampers' is in a large, green, cursive font. Below it, in smaller green capital letters, are the venues: 'TRINITY CHURCH HALL, FROME CRICKET CLUB, CHRIST CHURCH SCHOOL'. A green banner with white text says 'Saturday 25th December, 11am - 1pm'. At the bottom, there are two columns of text. The left column explains the event and where to collect hampers. The right column states it's free for guests but requires a sign-up and provides contact information. Social media icons for Facebook and Twitter are also present. At the very bottom, there are five logos: a bird, a circular logo with 'TOGETHER', a red logo with 'FAIR FROME', a blue heart logo with 'Active and in touch Frome', and a blue logo with 'FORWARD'.

Free Christmas lunch hampers

VENUES: TRINITY CHURCH HALL,
FROME CRICKET CLUB, CHRIST CHURCH SCHOOL

Saturday 25th December, 11am - 1pm

The Big Christmas Get Together is offering FREE Christmas lunch hampers and refreshments Christmas Day. These hampers will be available for collection from Trinity Church Hall, Christ Church School and Frome Cricket Club or by delivery. It is open to anyone who would like to receive a meal hamper, alongside gifts and a chance for some company. The event is funded by local donations

and is completely free for guests, but you must sign up for a hamper. Guest forms are available from Frome Library or by email.

For more info contact: fromechristmas@gmail.com
Facebook: [fromesbigchristmas](https://www.facebook.com/fromesbigchristmas) Twitter: [@fromechristmas](https://twitter.com/fromechristmas)
www.bigchristmasgettogether.org

Stay Safe, Be Well



AVANTI SCHOOLS
TRUST



AVANTI PARK
Excellence · Virtue · Devotion