



AVANTI PARK
Excellence · Virtue · Devotion

ISSUE 24
21st January 2022

Would you like to see your child featured in the Avanti Park Post? Please complete the photo consents on your Arbor App to enable us to use your child's pictures

MESSAGE FROM THE
PRINCIPAL



The Avanti Park Post

Dear parents and carers,

It's hard to believe we are already at the end of week 3 of the Spring term. With the days starting to get a bit longer it feels as if we are through the darkest and most difficult months months now. The snowdrops have started to come up in my garden, the first signs of spring!

We have received some fantastic news this week that initial indications are showing that our reception classes are likely to be full in September. We are welcoming more and more families to our wonderful school each week and we are going from strength to strength. This is in no small part down to our wonderful school community; children, parents and staff. Thank you for everything you all do to support us.

I'm hoping that most of you have now met our new Deputy Principal, Sakara Vitellaro. She has settled in really well and it's like she has always worked here!

Have a wonderful weekend

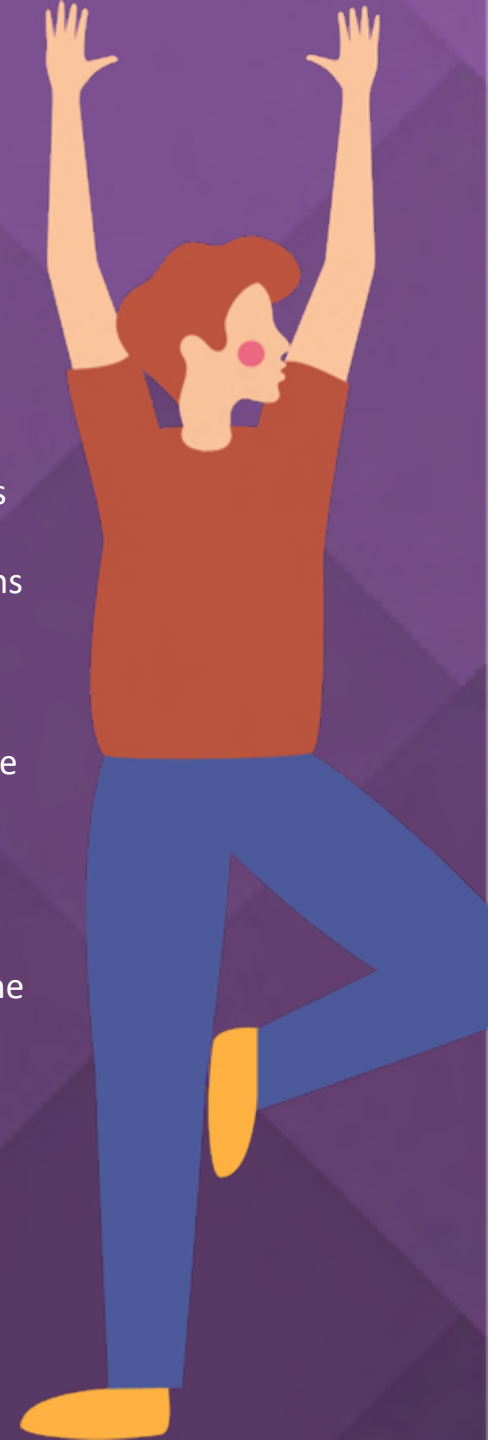
Abby Atkins

SCHOOL CONTACT DETAILS

avantipark@avanti.org.uk

absence.ap@avanti.org.uk

Tel: 01373 832804



Notices

Please see the weekly family bulletin for important 'dates for your diary'

A Warm Welcome

We would like to extend a very warm welcome to our new families that have joined Avanti Park over the last couple of weeks. Indigo Bowden, Rory Whitmore, Wilbur Dew, Luna Davis-Downs, Evie Bartlet, Beatrice Bartlet, Rose Marshall- Rawle, Mayme Darling-Swann and Lilly Antell.



AVANTI PARK
Excellence · Virtue · Devotion

LATENESS

Lateness still continues to be an issue for us in the mornings. When your child is late for school it disrupts their learning, that of the class, as well as unnecessarily using up valuable staff time. Please try very hard to get your child to school on time. The gate opens at 8.40am and so please aim to get to school for this time. We know there are the odd occasion where something out of your control happens, but these things shouldn't happen every day!

Maple:
Elodie W.
Tinashe
Rory

Pine:
Wilbur
Lyla-Wylde
Amor

Rowan:
Amelie &
Beatrix
Sophia
Ben

Holly:
Antoinette
Robin
Zelphie

Year 7:
Malisa & Sofia
Ava
Tallis

Ash:
Murphy
Annabel
Roman

Oak:
Maalu
Indigo
Thali

Chestnut:
Emily G
Zac
Eve &
Serena

Cedar:
Annie
Gracie
Saraswathi

Star of the Week
W/C 03/01
10/01
17/01

Avanti Park School

Beech:
Albie
Bror
Dakota

Cherry:
Luna
Tula
Ines

Sycamore:
Evie.B
Deki &
Dhalia M-N
Fynn

Year 8:
Alex
Hermione

EYFS/KS1
Craft:
Orin A-R
Lila C
Thea Z-O

EYFS/KS1
Yoga:
Dahli C
Indigo B
Chaska H

KS2 Craft:
Zachary R
Amelie W
Asha F

KS2 Yoga:
Antoinette
Evie B
Ayla R

EYFS/KS1 PE:
Ezra F-G
Orin A-R
Dahlia Y-G

KS2 PE:
Annie C
George T
Oscar P

Star of the Week
W/C 03/01
10/01
17/01

Avanti Park School

In the classroom



The children in Cherry class are learning about algorithms in computing. We programmed a sequence for floor robot 'BeeBots' to take them on a journey using certain commands. We spoke about debugging mistakes and what to do if we ran into an obstacle. The children had a great time and are able to describe what an algorithm is - we look forward to more next week! *Mrs Vitellaro*



A brilliant example of free writing by one of our Reception students

Notices

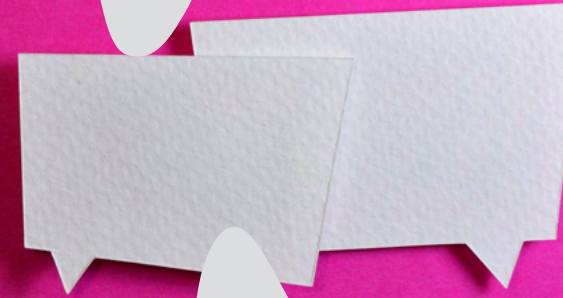


'Congratulations to Shannon and Jamie for passing their Health and Safety IOSH Course for Business Professionals.'



AVANTI PARK
Excellence · Virtue · Devotion

Let's Talk: Tackling Tricky Conversations



**Monday 31st January | 11am or 7pm
Online**

Join this free webinar to explore together how to manage those tricky conversations we all have from time to time.

There are 2 sessions to choose from, led by the Restorative Conversations group.

Book your place at bit.ly/FromLetsTalk

Frome | Made differently
TOWN COUNCIL

Traffic and Pedestrian Management Plan

Please see below a copy of the school *Traffic and Pedestrian Management Plan* details of which have been in place since the school first opened in Frome in September 2014. Please can we ask all parents to read this carefully. Many thanks, the Avanti Park Health & Safety Team.

TRAFFIC AND PEDESTRIAN MANAGEMENT PLAN

Pedestrian Movement:

We ask all parents to ensure their children walk, cycle or scoot to school where possible.

Parents, pupils, and staff are asked to use the pavements and to be thoughtful about other pedestrians' using Park Road.

Pupils on scooters and bikes are requested to walk their bikes once they reach the boundaries of the school, at the main school entrance and down the school road to the pond gate.

There are several stone and brick walls bordering the school grounds including a low wall on the edge of the neighbouring Christchurch Parish Hall. We request that parents do not let their children walk along these walls as we cannot guarantee their safety.

No pedestrians to walk to or from the pond gate through the car park

Vehicle Movement:

As a school community our aim is to limit vehicles entering Park Road as it is a no through road and there is very limited parking on the road. We request that parents driving from a distance to the school park in one of the local car parks or in the surrounding area and walk their children into school.

Limiting vehicle movement is important for:

- Safety of pupils and parents
- Safety of other pedestrians and Park users
- Being good neighbours to people who live and work on Park Road
- Vehicle use of the Car Park:

There is no drop off parking at the school site for parents except by special arrangement.

There are four drop off spaces and three disabled spaces that are for the use of pupils with access needs and these spaces need to be arranged with either the school Business manager or the school SENDCo

There is a one-way system in place in the car park and all vehicles will enter via the top entrance

All vehicles to drive at a maximum speed of 5mph

The car park will be assessed for safety in conditions of ice and snow and may on occasion be closed by the Health & Safety team in order to keep staff, pupils, and parents safe.

No vehicles will be allowed on site during the school day unless accompanied by two members of the Site and Health & Safety Team.



Special Thanks

We are continuing our “Special Thanks” scheme in to the new year whereby parents, guardians, and carers are able to nominate and recognise staff for their efforts for supporting members in our Avanti community. This scheme was piloted at Avanti Park last year and made a real difference to our staff and their wellbeing.

To nominate a member of staff, please click on the following link:

<https://avanti.org.uk/avantipark/parents/staff-nominations-for-special-thanks/>



AVANTI PARK
Excellence · Virtue · Devotion



Stay Safe, Be Well

Right of the week

Article 12 (*respect for the views of the child*).

Every child has the right to say what they think in all matters affecting them, and to have their views taken seriously



AVANTI SCHOOLS
TRUST



AVANTI PARK
Excellence · Virtue · Devotion