



**AVANTI PARK**  
Excellence · Virtue · Devotion

# The Avanti Park Post

ISSUE 43  
13<sup>th</sup> October  
2023

MESSAGE FROM THE  
PRINCIPAL

Dear parents and carers,

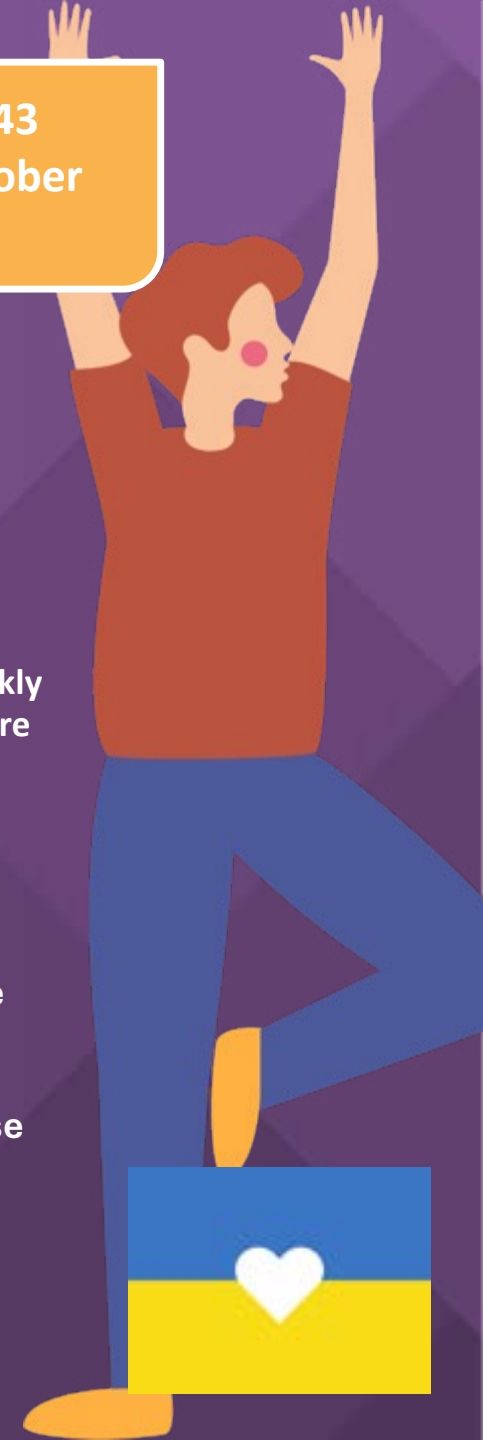
Welcome to this terms Avanti Park Post. We aim to publish at least one of these per half term to give you a flavour of school life. You will find lots of photos in each edition to celebrate the wonderful things that are happening in the school.

We have had a fantastic start to the year with all of our children settling into their school routines really quickly. It has been a delight to see our new Reception children coming eagerly through the school gates each day full of enthusiasm for the day ahead. A big thank you to the Reception class parents for working with us to help settle your children quickly each day. The continuing partnership between school and home is incredibly important in making sure your children are happy and successful at school.

We have also welcomed 14 wonderful new staff to the school this September. Despite a publicised teacher and TA shortage, we continue to recruit fantastic staff to Avanti Park.

This term many of our year 5 and 7 students have been on residential trips. Year 5 have just returned from the Isle of Wight and year 7 spent a wonderful week at the Avanti Schools Trust residential and retreat centre in Lincoln. All of the children, and staff, threw themselves enthusiastically into the activities and have made memories that will stay with them forever. A big thank you to the staff that accompanied the children on these trips. Without staff giving up their time these trips wouldn't happen. I was lucky enough to go with year 7 to Lincon and I can say with authority, that they are brilliant fun but exhausting!

**Abby Atkins**



# Current School Priorities



All Schools have action plans which help to focus develop work and staff training. Please find below an overview of our current school priorities,

## **Priority Action Plan – School priorities for 23/24**

### **•Teaching and Learning**

- Launch and embed the AST framework for learning and teaching to ensure that staff have the knowledge and skills required to implement the curriculum effectively.
- Use WalkThrus/Iris for focused CPD to ensure a consistent approach to teaching and learning based on the science of learning linked to the AST framework for learning and teaching
- Develop systems to ensure that the assessment of Foundation subjects is robust, accurate and informs teaching and learning.
- Continue the work on Reading, Writing and Maths to ensure that outcomes are in line with age-related expectations

### **•Curriculum**

- Continue to embed the CUSP curriculum resource and implement into EYFS
- Continue to develop subject leaders to ensure subject leadership is strong and subject leads monitor their subject effectively

### **•Personal Development**

- Ensure there is a coordinated approach to delivering PD
- Further embed the Avanti Way to enhance pupils' spiritual, moral, social and cultural development.
- Further Improve staff understanding of British Values and protected characteristics to ensure that pupils are given opportunities, through the curriculum, to gain an understanding and appreciation of these.
- Continue to develop the careers curriculum to maintain the current Gatsby benchmark score of 100%

### **•Behaviour and Attitudes**

- Embed school expectations for attendance and punctuality for all students and parents to ensure good attendance and lower persistent absence using the AST Attendance Framework
- Further embed a whole school approach to resolving conflict, and developing empathy, through restorative practices.
- Enhance and develop the strengthening relationship between the school and parents

### **•SEND**

- Further embed curriculum implementation to ensure pupils with SEND and those who are disadvantaged have strong outcomes and make progress in line with their peers.
- Ensure that SEN provision (including interventions) meets need and results in improved outcomes for students
- Ensure that TA's are being deployed effectively by class teachers to improve outcomes for pupils and that they have the knowledge to support quality first teaching.
- Ensure that all staff have a good understanding of SEN pupil progress across the school resulting in progress in line with peers
- Enhance and develop the strengthening relationship between the school and SEND parents

# Avanti Park House Captains & Vice Captains 23/24

Thurlbear:  
Lilly  
Elena

Dommett:  
Lula  
Megan



Blackdown:  
Scarlet  
Ella

Harptree:  
Oscar  
Poppy



**Maple:**  
N/A

**Pine:**  
N/A

**Sycamore:**  
Noah  
Bella  
Orin  
Grace  
Franklin

**Rowan:**  
George  
Rosalie  
Etta  
Ava  
Theo

**Holly:**  
Esme  
Mabel  
Clara  
Shyla

**Willow:**  
Ruby  
Jada  
William H  
Teja  
Edie

**Cedar:**  
Lexi  
Rita  
Issei  
Rose  
Matilda

**Cherry:**  
Ruby  
Felix  
Marley  
Aida  
Rona

**Ash:**  
Lydia V  
Odetta  
Bron  
Lila FR

**Oak:**  
Roman  
Frida  
Ewan  
Jasmin H

**Hazel:**  
Adam  
Jake  
Jacob H  
Lyla

**Chestnut:**  
Eliza  
Willow  
Phoebe  
Aylin  
Asta

**Birch:**  
Jude  
Matilda  
Asha  
Verity  
Fynn

**Beech:**  
Ida  
Amor  
Franco  
Indie

Star of the Week W/C  
11/09/2023  
18/09/2023  
25/09/23  
02/10/23  
09/10/23

AVANTI PARK SCHOOL

**EYFS/KS1 Art:**

Joni M-A  
-  
Gabriel F  
-  
Roman B

**EYFS/KS1 Yoga:**

-  
Marlow E  
Leon P  
Olivia K  
Felix H-C

**Walnut:**

Xena  
-  
Beau  
Aryon  
Tove

**House points so far this year....**

1st Harptree 3,663  
2nd Blackdown 3,453  
3rd Thurlbear 3,411  
4th Dommett 3,055

**Hawthorn:**

Kai S  
Maya S  
Jude H  
Jamie N  
Asha

**KS2 Yoga:**

-  
Joni R  
Harriet L  
Sophia P-A  
Nancy D

**KS2 Art:**

Thomas B  
-  
Arthur C  
-  
Jayden E

Star of the Week W/C  
11/09/2023  
18/09/2023  
25/09/2023  
02/10/23  
09/10/23

**EYFS/KS1 PE:**

Imogen R  
Vinny T  
Issac P  
Lilac D  
Mateo

**Elder**

Kayden  
Islarose  
Lilly A  
Lula  
Oscar

**KS2 PE:**

Sophie P-B  
Imre D  
Sunny M  
Sasha M  
Maalu

**Aspen**

Leo W  
-  
Caelan  
-  
Louis

**AVANTI PARK SCHOOL**

# Principals Award



Elder  
Isla H

Hawthorn  
Isla M

Maple  
N/A

Pine  
N/A

Oak  
Roman B

Ash  
Lila FR

Aspen  
Megan H

Awarded  
each half  
term to pupils  
who  
consistently  
display Avanti  
Park's core  
values and  
virtues.



Beech  
George B

Cherry  
Logan B

Chestnut  
Indigo B

Walnut  
Beau W

Birch  
Ella H

Hazel  
Lily-Mae

Willow  
Orla D

Holly  
Camille

Rowan  
Imre

Cedar  
Bror

Sycamore  
Sylvie G



# Notices



## Musical Instruments needed!

The music room is being moved to a new permanent location in the building and we would love to stock it with more instruments. Do you have any instruments at home gathering dust that you would be willing to donate? All instruments are considered but we are looking in particular for instruments such as drums, keyboards, percussion instruments, guitars (both acoustic and electric) also amps and microphones, and stands.  
Please bring your items to the school office.

## Open Classrooms

2<sup>nd</sup> November 2023.

3.15 - 4.00pm

Come and visit your children's classroom and have a look at the work they have been doing in class.

INSET DAY:  
Monday  
30th  
October

## CREATIVE MAKERS



Great news! Creative Makers is running a four-day art camp for children aged 5-10 during the October holidays at Avanti park school. The sessions will be run by a qualified and experienced Art and Design teacher.

Over the camp days, students will explore the work of various artists and create works that are inspired by them. They will also work in groups and use a range of materials to create paintings, prints, sculptures and large installations pieces. At the end of each day, all students will have creative work to take home. Each day is a fresh project, so you can attend one or all days and still have a unique experience.

All materials needed for the Art camp will be provided.

The camp will run from 9am -3pm each day. Places are limited, it is recommend that you sign up as soon as possible by heading over to [creative-makers.co.uk](http://creative-makers.co.uk)

The art camp is a great opportunity for your child to explore their creative side and fun during the holidays

Dates: 17th, 19th, 24th, 25th October  
Times: 9am-3pm

[creative-makers.co.uk](http://creative-makers.co.uk)



# Notices



## Recruitment

Avanti Park are hiring kitchen staff. Please contact Amber for more details and an application form  
[Amber.Wagstaff-sommer@govindas.com](mailto:Amber.Wagstaff-sommer@govindas.com)

## UN-NAMED lost property!

This is our current pile of un-named lost property!! These items cannot be reunited with their owners. Please PLEASE label ALL items of school kit.



## Year 6 into year 7 transition parent meeting

Tues 31<sup>st</sup> October

4.30 – 5.30pm in the main hall. This is an in person event and will not be recorded.



# Year 7 Verdanta Trip



A few pictures from  
the year 7 Verdanta  
trip





# Year 7 Verdanta Trip





# Year 7 Verdanta Trip





# Year 7 Verdanta Trip



# Year 7 Verdanta Trip





# Year 5 Isle of White Trip



A group of pupils from year 5 spent the week at the Isle of white. They had great fun trying lots of activities such as rock climbing and fencing.



# Year 5 Isle of White Trip



# Year 5





# Year 4 Wildwood Trip



Year 4 had a great time during their educational trip to Devon.



# Year 4 Wildwood Trip



# Year 3 Science Lesson



Year 3 pupils had a great science lesson last week, which involved an experiment using chocolate!





# Cross Country Running



A big thank you to Jenni Antell (Grandma of Lilly, Willow and Rosie) for donating running vests to our newly formed Avanti Park Cross Country Team. The team will be competing across a number of different venues in Somerset this term. Good luck to all the runners and a thank you to the parents who are taking them to the races.





# Interhouse Benchball Competition



Year 4 took part in an Interhouse Benchball Competition on Tuesday 10th October which was led by Year 8 Sports Leaders. They first took part in a warm-up to music. They were then split into their house teams and played 3 matches against the other houses. Year 4 showed fantastic effort and determination and lovely teamwork. This term they have been learning Netball skills in their PE lessons, so it was a great way to demonstrate those skills learnt in a competitive environment. Well done to all of Year 4 for playing and conducting yourselves so well.

Thank you to the Year 8 Sports Leaders for being excellent role models to Year 4 and for running the warm up (Scarlett and Iris), refereeing the games (Max, Robin and Sam), leading a team (Gracie, Lilia, Iris, Scarlett, Isla and Emily) and for doing the results (Nuala and Lyra).



## Final Results:

1st Place – Dommett

2nd Place – Blackdown

3rd Place – Thurlbear

4th Place – Harptree & Blackdown  
(Combined team)

5th Place – Thurlbear & Dommett (Combined team)

6th Place – Harptree

# From the PTFA...

---

" In other news, we are hoping to tidy up the PTFA room, it stores all the summer fair donations and the uniform swap supplies and wondered if anyone might be able to donate any of the following:

- A) storage shelving
- B) make us some storage shelves
- C) donate some materials to make some shelves

Example of type storage shelves we are hoping for:





# Family Information Network Directory

## #LearnForLove

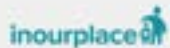
Discover the secrets to healthy family relationships and wellbeing

New online learning for all Somerset residents worth

**£100**

- **Baby on the way?** Manage your emotional and physical health and build strong bonds with your baby
- **Parents, grandparents and caregivers:** learn more about your amazing child and what makes them tick
- **Teenagers:** learn about your wonderfully complex mind and emotions

This free service is commissioned by Connect Somerset, a partnership between Somerset Council, Somerset NHS, Early Years settings, Schools, Colleges and the Voluntary, Community, Faith and Social Enterprises.



### 3 easy steps to start your learning journey now:



Use the QR code on your phone, or go to: [bit.ly/LearnForLove](https://bit.ly/LearnForLove)

dragon

Enter code 'dragon'



Choose your topics for learning – as many as you like!

Respecting your privacy: All you need to access the courses is an email to log in and track progress. We don't use this email address for anything else and we don't share it with anyone.

# Find

Frome's Family Information Network Directory, an easy to use platform to find the information you need for your family all in one place.

Communities, connections, services and resources for families and professionals to help support a strong and resilient town.

[findfrome.co.uk](https://findfrome.co.uk)



Family Support & Advice  
Health and wellbeing  
Employment  
Pregnancy



Childcare  
Childminders  
Nurseries and preschools  
After school clubs



Education  
Local schools  
Specialist schools  
Educational resources



Young People  
Activities and groups  
Advice and support  
Employment and training



Things to do, places to go  
Activities for all ages  
Family friendly events  
School holiday fun



Resources and Quick Links  
Parenting support  
Mental and physical health  
Financial advice

[findfrome.co.uk](https://findfrome.co.uk)

[info@fromecouncil.gov.uk](mailto:info@fromecouncil.gov.uk)

01274 401017

# Traffic and Pedestrian Management Plan

Please see below a copy of the school *Traffic and Pedestrian Management Plan* details of which have been in place since the school first opened in Frome in September 2014. Please can we ask all parents to read this carefully. Many thanks, the Avanti Park Health & Safety Team.

## TRAFFIC AND PEDESTRIAN MANAGEMENT PLAN

### **Pedestrian Movement:**

We ask all parents to ensure their children walk, cycle or scoot to school where possible.

Parents, pupils, and staff are asked to use the pavements and to be thoughtful about other pedestrians' using Park Road.

Pupils on scooters and bikes are requested to walk their bikes once they reach the boundaries of the school, at the main school entrance and down the school road to the pond gate.

There are several stone and brick walls bordering the school grounds including a low wall on the edge of the neighbouring Christchurch Parish Hall. We request that parents do not let their children walk along these walls as we cannot guarantee their safety.

No pedestrians to walk to or from the pond gate through the car park

### **Vehicle Movement:**

As a school community our aim is to limit vehicles entering Park Road as it is a no through road and there is very limited parking on the road. We request that parents driving from a distance to the school park in one of the local car parks or in the surrounding area and walk their children into school.

### **Limiting vehicle movement is important for:**

- Safety of pupils and parents
- Safety of other pedestrians and Park users
- Being good neighbours to people who live and work on Park Road
- Vehicle use of the Car Park:

There is no drop off parking at the school site for parents except by special arrangement.

There are four drop off spaces and three disabled spaces that are for the use of pupils with access needs and these spaces need to be arranged with either the School Business Manager or the school SENDCo

There is a one-way system in place in the car park and all vehicles will enter via the top entrance and anyone wishing to use this entrance will need to complete the 'Use of Car Park Form' available from the office.

All vehicles to drive at a maximum speed of 5mph

The car park will be assessed for safety in conditions of ice and snow and may on occasion be closed by the Health & Safety team in order to keep staff, pupils, and parents safe.

No vehicles will be allowed on site during the school day unless accompanied by two members of the Site and Health & Safety Team.



# Special Thanks



**AVANTI PARK**  
Excellence · Virtue · Devotion

We are continuing our “Special Thanks” scheme in to the new year whereby parents, guardians, and carers are able to nominate and recognise staff for their efforts for supporting members in our Avanti community. This scheme was piloted at Avanti Park last year and made a real difference to our staff and their wellbeing.

To nominate a member of staff, please click on the following link:


<https://avanti.org.uk/avantipark/parents/staff-nominations-for-special-thanks/>



# Stay Safe, Be Well



## Right of the week

**28**

**ACCESS TO  
EDUCATION**

**28**

Every child has the right to an education. Primary education should be free. Secondary and higher education should be available to every child. Children should be encouraged to go to school to the highest level possible. Discipline in schools should respect children's rights and never use violence.

SCHOOL CONTACT DETAILS  
[avantipark@avanti.org.uk](mailto:avantipark@avanti.org.uk)  
[absence.ap@avanti.org.uk](mailto:absence.ap@avanti.org.uk)  
Tel: 01373 832804



**AVANTI** SCHOOLS  
TRUST

