



AVANTI PARK
SCHOOL



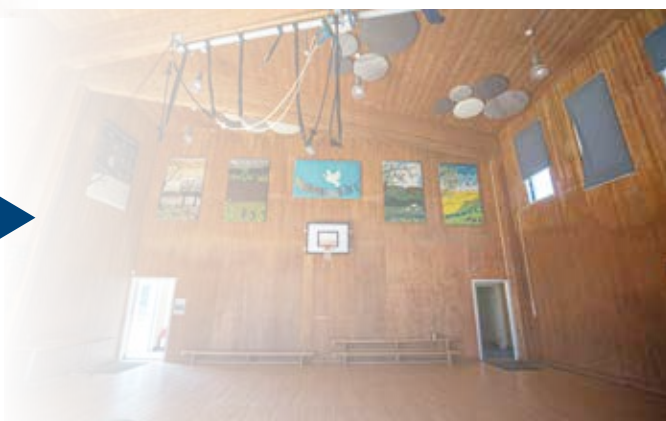
◀ 4 Welcome

6 Core principles ▶



◀ 8 Our commitment to parents, carers and students

10 Tour of the School ▶



◀ 12 Learning & Teaching



◀ **14** Curriculum

16 Uniform



◀ **22** School Lunches

24 Life at Avanti



◀ **30** Admissions

Avanti Park Primary School, Frome



Welcome to Avanti Park Primary School from our Principal

Welcome to Avanti Park School. Thank you for taking the time to read our prospectus. Our ethos at Avanti Park is built on three areas: Educational Excellence, Character Formation and Spiritual Insight. We are very proud of our inclusive, warm and caring approach. Strong relationships between staff and students are incredibly important to us and are key to ensuring that all our children will flourish and reach their academic and social potential.

All staff at Avanti Park School work in partnership with parents to ensure that every child is prepared to meet their life challenges, achieving well academically as well as having memorable experiences in other curriculum areas such as arts, DT, yoga, PE, and whole school festival celebrations. Through our curriculum pupils will gain a reflective, compassionate understanding of themselves and the communities around them.

We hope that this prospectus will give you a flavour of our school. Please do contact the school office with any questions you may have about our unique, wonderful school or to arrange a visit.

Abby Atkins
Principal



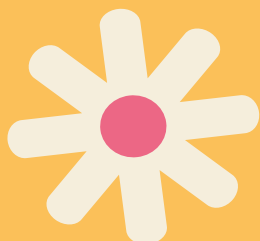
Our vision

At Avanti Park, our aim is to enable our students to be the very best version of themselves and ultimately contribute to making the world a better place (The Avanti Way).

Through a curriculum built on the Avanti three pillars and by actions underpinned by the six core values, students are able to learn, develop and grow into a life of fulfilled potential.

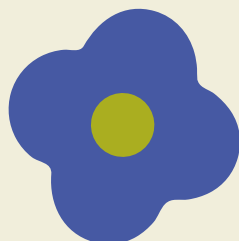


Core principles



We have incredible potential and can achieve this when nurturing all parts of ourselves – intellectual, emotional, physical and spiritual.

1



We choose how we wish to respond to life and what we nurture within.

2



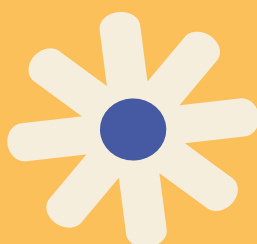
We care for and respect all life – human, animal and plant – and live in a way that causes the least possible harm.

3



We each observe the one same reality from our own unique perspective and engage in open-minded dialogue to deeply enrich our vision.

4



We serve a higher purpose by living a meaningful and satisfying life of contribution.

5



We are nourished by personal relationships that fulfil our need to love and be loved, encouraging us to be the best we can be.

6

The three pillars

Our school prepares students for their respective life-journeys by promoting educational excellence, character formation and spiritual insight.



Educational excellence

Our vision for educational excellence is one where deeply inspired teachers nurture joyful students and nourish their innate passion for learning. Learning is a quest to discover each student's unique gifts and potential and lay the foundation for their lifelong journey of learning. This is inseparable from high academic standards, where a challenging holistic curriculum cultivates independently thoughtful and reflective students by working towards a sense of mastery, emphasising depth, and not just breadth.



Character formation

Our vision for character formation is one where virtues are taught by example and a supportive community of learners fosters a powerful sense of individual and collective purpose. Learning develops for these conscious changemakers as a quest for making the world a better place, starting with oneself. The capacity to internalise and put into practice what we have learned is the true test of learning. Building this capacity demands an experiential, virtues-led curriculum that embraces collaboration, custodianship and global perspectives.



Spiritual insight

Our vision for spiritual insight is one where our interconnectedness with all living beings and with the universe, urges acts born out of humility and love, and the Self is perceived beyond its layers of coverings. Learning blossoms for these seekers as a quest for self-discovery and opens the door to their unlimited potential; an antidote to the emptiness of a materialistic or mechanistic world view. The curriculum unveils the possibilities of sacredness and transcendence at every moment and so engenders a deeply positive attitude to life, enduring happiness and heartfelt relationships.

Our commitment to parents, carers and students

We want to involve you as parents and carers fully in your child's education. By working closely with you we can ensure that each stage of your child's journey is stimulating, positive and enriching.

We will provide:

- The very best teaching in every subject and every classroom;
- A rigorous curriculum that challenges and stretches every student to be the best that they can be;
- A regular and robust assessment and reporting system that clearly informs you about your child's progress;
- An enrichment programme that includes academic, sport and music related activities;
- A wide range of local, national and international educational visits including residential;
- Clear and precise feedback that enables every student to master key skills and build their understanding;
- Opportunities to contribute to the life of the school and develop their leadership skills;
- A safe learning environment in which your child can flourish and be happy





Tour of the school



Reception ▲

The Avanti Park reception area is in the original Victorian building. High ceilings give a wonderful open feel.



Classrooms ▼

Each room within the primary buildings are well equipped to deliver the KS1 and 2 curriculum. There is a reading area and carpet space for group reading and activities. All rooms have an interactive screen to enhance the learning experience.



Outdoor Classrooms ▼

We are lucky to have two outdoor classrooms one round house and one barn like structure perfect for learning outside even when it's raining!



EYFS Room ◀

These beautiful rooms are wooden clad and have a very natural feel. Each have a kitchen area for cooking and also lead out onto a gorgeous garden for outdoor learning and play.

Science Lab ▶

A well equipped science lab is used for KS2 and KS3 Science lessons.



Playground ►

A large playground outside the primary building has a climbing area and also a sandpit for sand play. There is plenty of space for children to run around and burn off some energy.



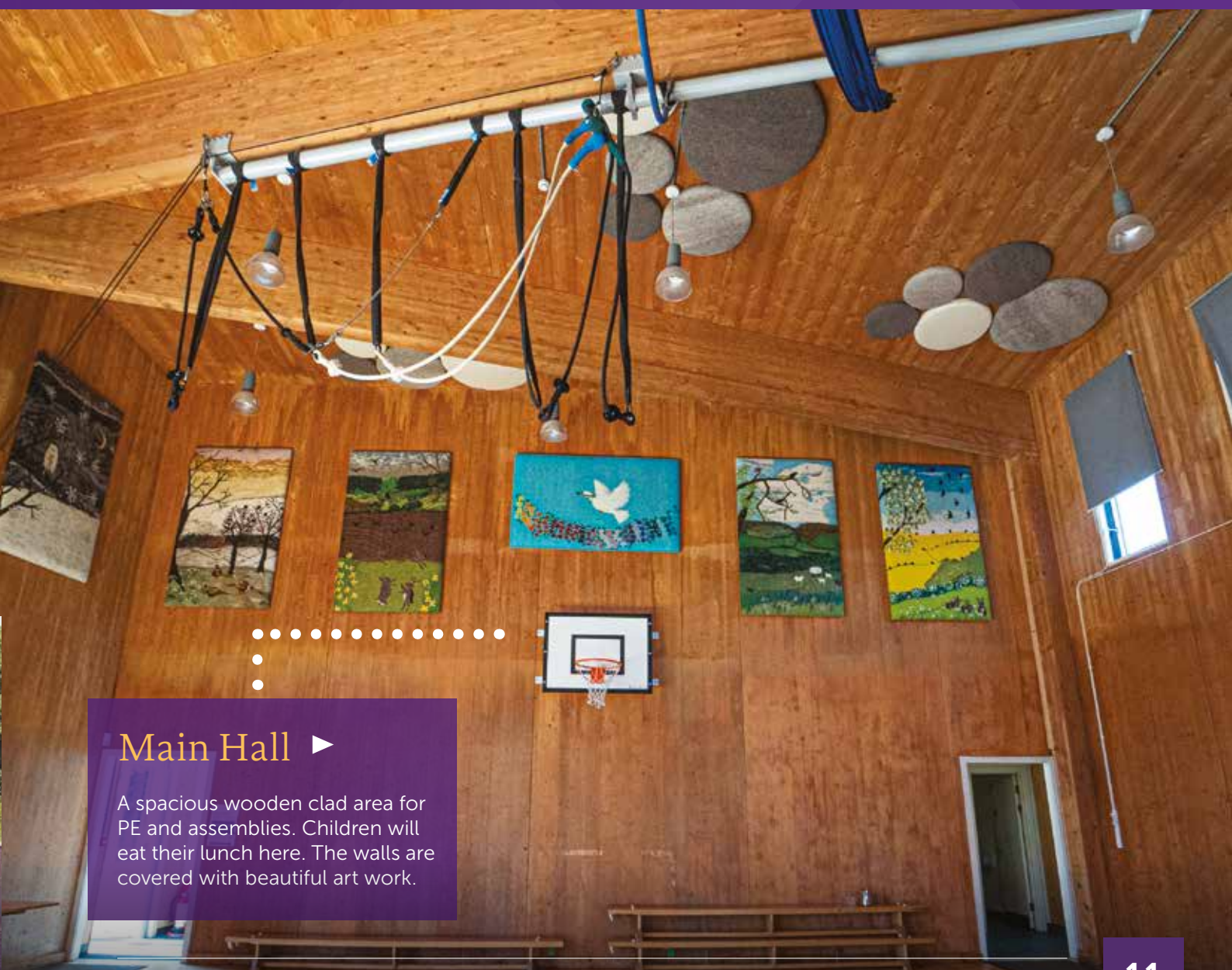
Yoga Hall ▼

We are extremely fortunate to have a hall for yoga. It is a beautiful, light and airy room which allows our children to immerse themselves into yoga and mindfulness.



Library ◀

Our diverse and well equipped library offers a quiet and inspiring space for students to find resources and work or read quietly.



Main Hall ►

A spacious wooden clad area for PE and assemblies. Children will eat their lunch here. The walls are covered with beautiful art work.

The Avanti approach to Learning and Teaching

Learning and teaching in all Avanti Schools is underpinned by the Avanti Teacher Toolkit. Our teachers and teaching assistants are guided by the 12 Avanti Habits, rooted in cognitive science and evidence-informed practice. All our teachers are continuously developing their practice through exceptional professional development from the Avanti Institute, ensuring that our pupils benefit from the highest quality teaching in every lesson.

12 elements of great learning and teaching in Avanti Trust Schools

Through a planned programme of training and development supported by The Avanti Institute, we ensure that all Avanti Trust Schools have a highly developed sense of what constitutes great teaching. We continuously train and coach our staff on every feature of high quality pedagogy, in order that every student gets an education that is second-to-none.



We ensure that all our teachers:

1. Build positive relationships with pupils and each other
2. Begin and end lessons calmly with familiar routines
3. Use intentional seating and classroom set up
4. Create a flourishing learning environment by managing behaviour effectively
5. Have clear and ambitious learning intentions for all pupils
6. Are always context considerate and adapt practice appropriately
7. Activate daily review of prior learning
8. Present new material in small steps
9. Provide modelling and scaffolding
10. Give opportunities for guided and independent practice
11. Ask effective questions and check for pupil understanding
12. Review learning regularly before moving on to new content





“Plan activities that will enable students to demonstrate understanding and master skills.”

Primary Curriculum

We believe that all learners are entitled to an education that equips them with the knowledge, skills and values they need and teaches them how they can contribute to a future that they want to live in.

The Early Years Framework and National Curriculum lie at the heart of what is taught at Avanti Park School. Our curriculum ensures all children make good progress as they know and remember more over time. It is ambitious for children with SEND and those that are vulnerable in order to close any attainment gap.

We understand what children need to know and learn, and our curriculum ensures that every child achieves this and more. Learning has been sequenced in such away to reduce cognitive load, link to prior learning and enable children to master new concepts.

When we teach the curriculum, we ensure that:

- Key concepts are repeated throughout the children's learning journeys so that all children revisit and develop a deeper understanding of their learning.
- Knowledge organisers and notes are used in each unit so that it is clear what knowledge and understanding will be gained at each stage of learning.
- Subjects are taught discretely but links are made where appropriate to interconnect knowledge.
- Low stakes quizzes and end-of unit writing tasks are used to assess whether knowledge has been committed to the long term memory.

The Avanti Way

Our curriculum is underpinned by the Avanti Way: Educational Excellence, Spiritual Insight and Character Formation.

These values promote thinking as a global citizen and help to develop skills for young people to make meaningful contributions to society.

We enhance children's social, moral and character development with a variety of opportunities including being part of the school council, the eco committee, and becoming play leaders for younger children.

We promote a spiritual connection with themselves and the world around them with yoga and mindfulness, Winter and Spring Festival days, a dedicated art and design space and opportunities to learn outdoors in Forest School.



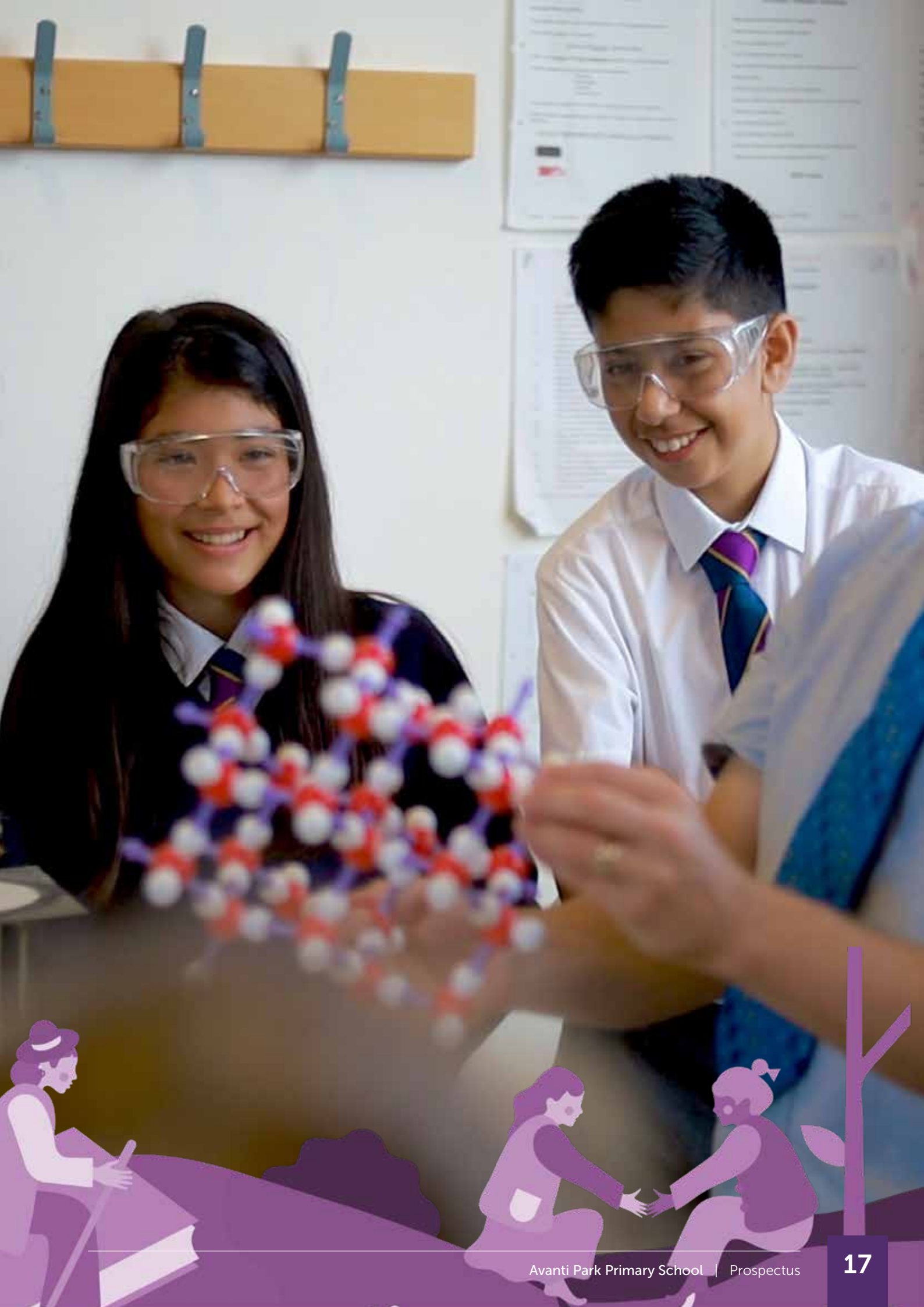
Secondary Curriculum

All pupils will have access to a broad and balanced curriculum, which alongside our extra-curricular programme, will enable each child to find and nurture their individual talents. In year 7 and 8 pupils will follow a broad and challenging academic curriculum. This includes the following subjects:

- English
- Mathematics
- Science
- Geography
- History
- PRE
- PE
- Spanish
- Computing
- DT/Food
- Art
- Music
- PSHE including SRE

We believe that building firm foundations in English and mathematics enable pupils to thrive in all their subjects and their adult life. To facilitate this, we offer extra time for English and Mathematics in order that our pupils master their literacy and numeracy skills and are therefore able to choose and succeed when they move on to the next stage of their education.





Personal Development

Enrichment

Enrichment is a key part of students' learning and personal development at Avanti Park School. We host a range of opportunities for students to engage further with their academic learning and to develop key character formation qualities through a range of events, visits and extra-curricular activities. We are particularly proud of winning two awards recently; namely the Silver Rights Respecting award and the Eco schools award.

We regularly run focus days and themed weeks on a variety of themes. Previous areas of learning have included climate change, sustainable travel, anti-bullying and British Values. These have allowed our children to discuss issues in more depth. It has allowed them to develop their own awareness of some quite complex issues and reflect on these through discussion and practical activities. They also have opportunities to develop their own ideas about what is important to them.

We also run regular festival days which allow teachers and children time to creatively explore a range of different experiences including visitors from creative industries and finding out about different cultures. These days are supported by our PFTA team. Examples of the festivals are a Winter Festival of Light and Resilience and Chinese New Year. We have also taken part in locally run community festivals including Frome Kindness Week, Frome Children's Festival and Frome Multicultural Festival Day.

Pupil Leadership

There are many opportunities for our pupils to develop their leadership skills at Avanti Park School, both within curriculum areas and our extra-curricular provision. We aim to provide opportunities for our pupils to develop leadership skills by succeeding together as a community through a shared vision and our ethos, using pupil voice to make our school the best it can be.

Examples of pupil leadership roles include:
Avanti Park School Council

Eco leaders

Play leaders

House Captains and Vice Captains

Careers

The Avanti Park School's careers curriculum follows the statutory guidance set out by the DfE and aligns with the Avanti vision. All our age groups take part in our whole Careers Week when we welcome members of our parent and carer community into school to talk about their jobs.

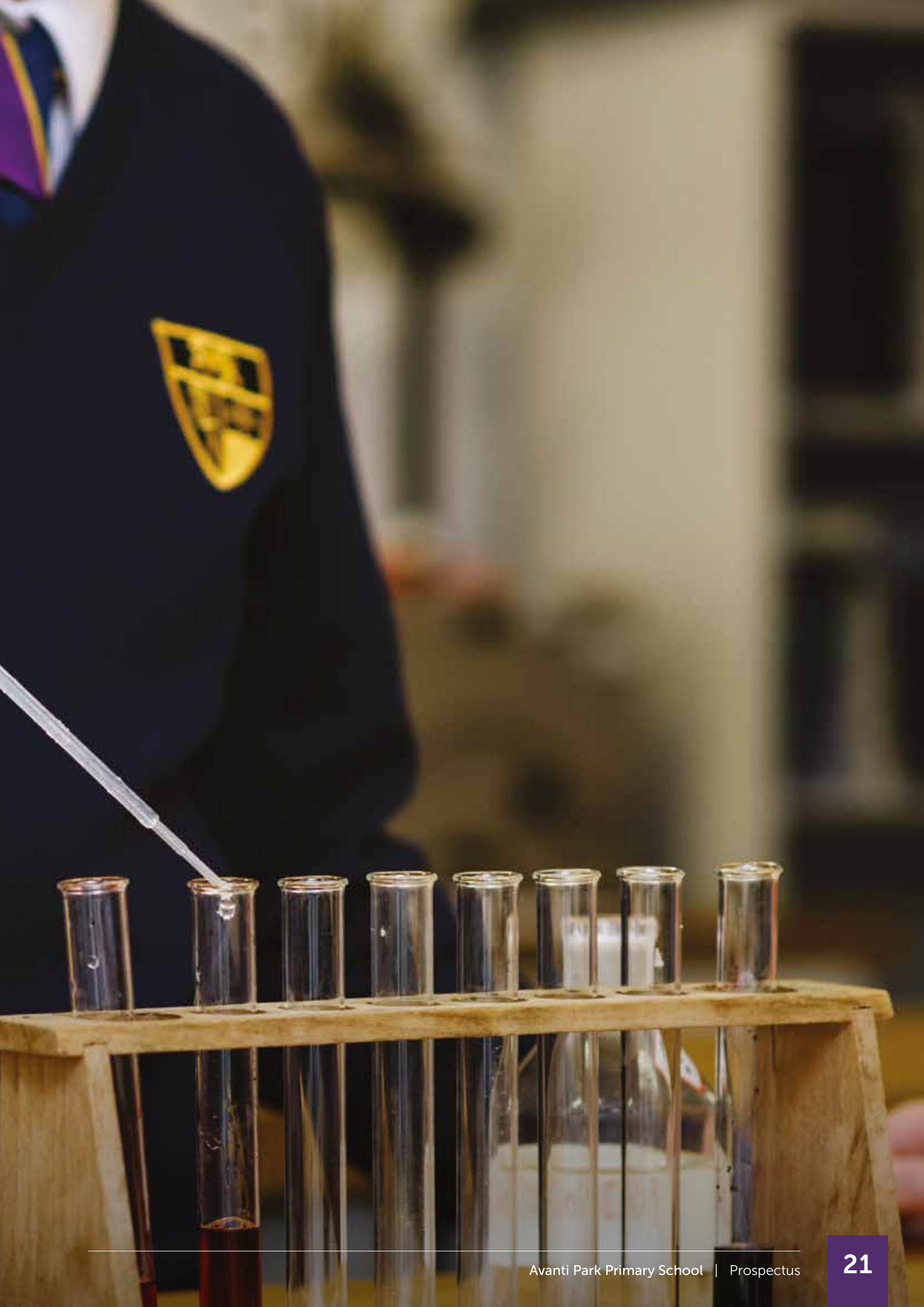
Our careers programme ensures all students are supported to develop, embody and put into practice the essential workplace qualities and skills. It is through this strategic academic, experience and holistic approach that we aim to support all our pupils in their quest to embrace and fulfil all opportunities open to them in the world of work.





Uniform

Uniform and achievement have always been a high priority for the Avanti Schools Trust. We believe the way in which students wear their school uniform reflects the importance which is placed on attention to detail and pride in the school. The smart appearance of our students has been appreciated by parents of prospective students and visitors to our schools. For more information about the school's uniform requirements please visit our website.



School lunches

An important part of our ethos is around the provision of hot, fresh, nutritious meals. Sharing tasty, healthy school lunches is an integral part of the educational experience at an Avanti school. It's also an opportunity to enhance social skills and table etiquette, ensuring lunchtimes are a positive experience for all. School staff often enjoy taking lunch with pupils, creating a family atmosphere.

The lunch meals cooked on-site are vegetarian (in line with the faith ethos of the Trust) and half-termly menus are also available on the School's website. If the lunch provision on offer does not meet your child's needs, or if your child has specific dietary requirements/preferences, please do speak to Govinda's (our catering provider) so that they can provide for your child accordingly.

We strongly encourage parents who have financial constraints to apply for Free School Meals. An application form can be obtained from the school office. Any forms received by the school will be kept confidential.

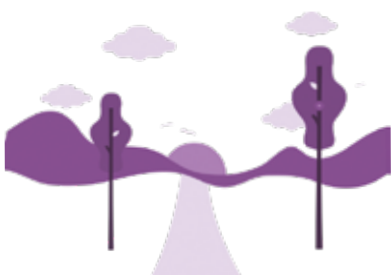






Wellbeing wisdom

Avanti staff have access to regular wellbeing sessions. Our previous sessions have been led by medical professionals, corporate coaches and even monks! We discuss everything from how to overcome stress to learning about meditation.



Retreats and Residentials

Staff and upper KS2 students will have an opportunity to go to off-site retreats and residentials. These are fantastic retreats allowing individuals to nurture and develop more friendships, engage in fulfilling activities whilst going out of their comfort zone, improve overall wellbeing and reconnect with nature.



Wide, rigorous and unique curriculum offer

Our schools offer a dynamic classroom approach in which students actively explore real-world problems and challenges and acquire a deeper knowledge. Students at all ages engage in projects, from studying the environment to social experiments to working on scientific innovations.



Yoga

Every primary pupil has access to Yoga and Mindfulness sessions ranging from 20 minutes to 1 hour a week. Yoga and Mindfulness help ground students, relieve stress and improve their overall health and wellbeing.



Fresh vegetarian meals

We believe a healthy gut is the basis of a healthy life, and that's why it's so important to us that we only use the freshest ingredients when preparing our tasty, nutritious vegetarian meals available for all children.



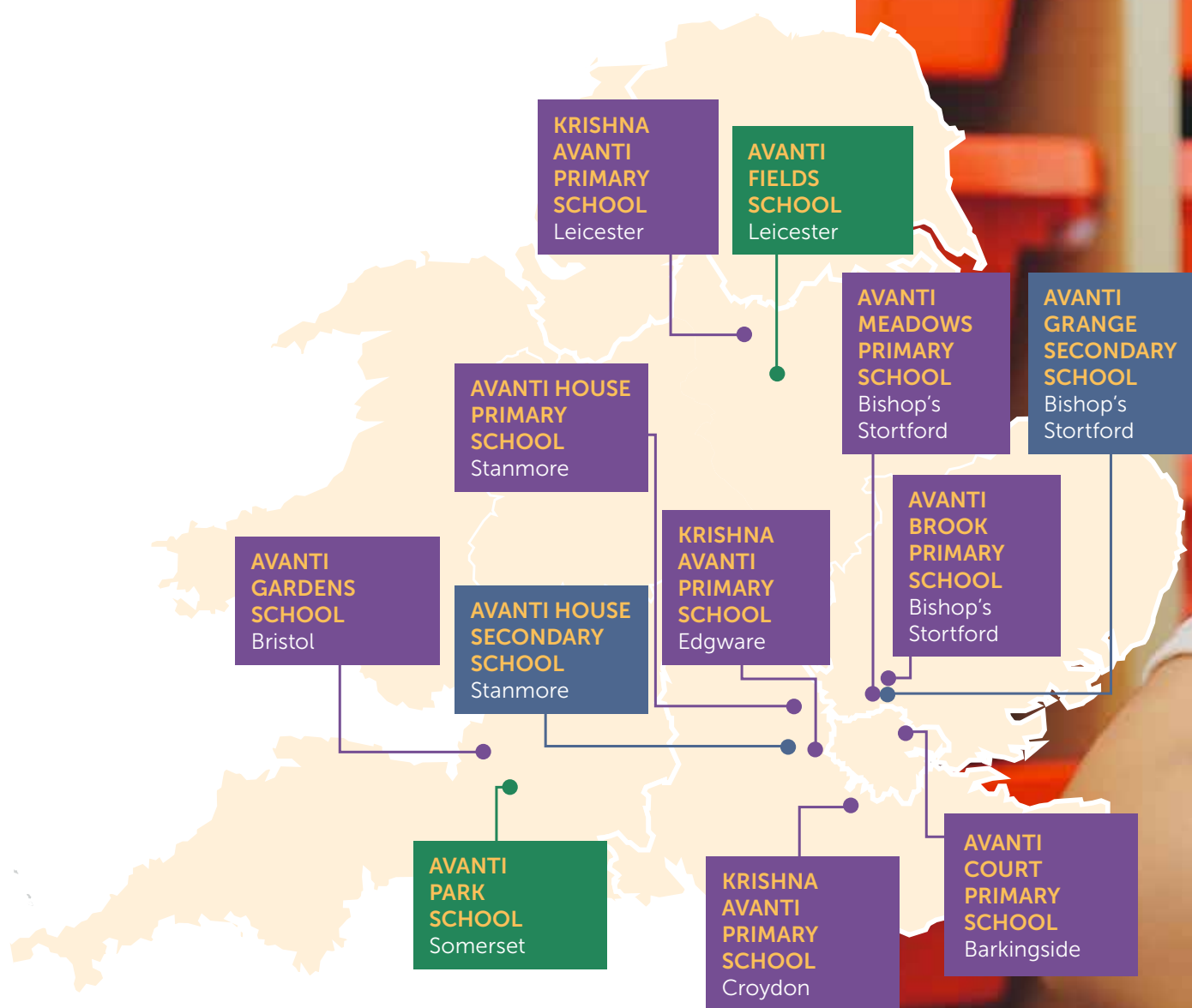
Avanti Community

Avanti hosts regular events for parents and the wider community. This is a series of events focused around wellbeing and development for parents in their personal and family lives.

Avanti Schools Trust


Avanti Schools are based across the country. The idea for Avanti began in 2003 and our first school was opened in 2008. Our vision was for a family of schools based upon our core principles of educational excellence, character formation, and spiritual insight. We now have over 5000 students and 600 members of staff across our family of 12 schools.

Avanti has a proven approach to school development and improvement, with excellent student outcomes across our schools for example our school outcomes are amongst the top 10% in the country at Key Stage 2 and 4.





Reviews from across the Avanti Schools Trust

A stylized illustration of a child walking, shown in profile from the side. The child is wearing a light-colored long-sleeved shirt with a dark sleeve, dark trousers, and white sneakers with dark laces. The background of the entire page features a large, faint, purple-tinted image of a smiling child's face.

"We have been with the school for four years now and are very happy. Our daughter is thriving, she has had the most wonderful teachers and built strong friendship groups, we have also developed a wide network of friends through the parent community. The grounds are simply beautiful and my daughter loves the extra curricular yoga class Avanti Schools remains my first choice of school in the area and I'm looking forward to my son joining next year."

Parent
of child in Year 4

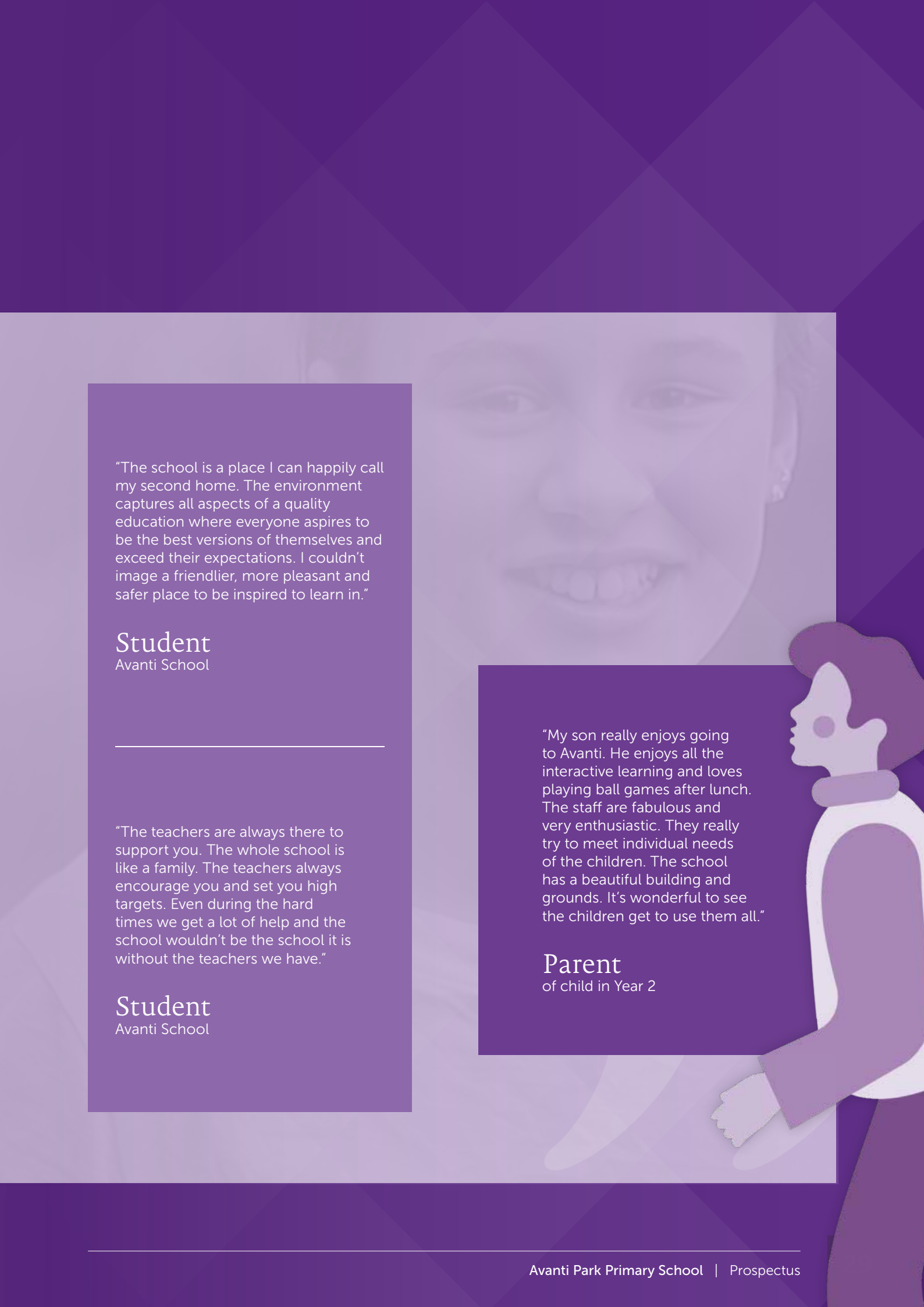
"Thank you for welcoming me to the school today. It has been inspiring to meet staff and students so engaged in learning. My congratulations to everyone involved in the conception and opening of this splendid premises."

Damian Hinds
Former Secretary of State
for Education

"The provision for pupils' spiritual, moral, social and cultural development is exceptional."

School leaders and governors, through the Avanti Trust, are wholly committed to ambitious outcomes for all pupils."

Ofsted



"The school is a place I can happily call my second home. The environment captures all aspects of a quality education where everyone aspires to be the best versions of themselves and exceed their expectations. I couldn't image a friendlier, more pleasant and safer place to be inspired to learn in."

Student
Avanti School

"The teachers are always there to support you. The whole school is like a family. The teachers always encourage you and set you high targets. Even during the hard times we get a lot of help and the school wouldn't be the school it is without the teachers we have."

Student
Avanti School

"My son really enjoys going to Avanti. He enjoys all the interactive learning and loves playing ball games after lunch. The staff are fabulous and very enthusiastic. They really try to meet individual needs of the children. The school has a beautiful building and grounds. It's wonderful to see the children get to use them all."

Parent
of child in Year 2



“The provision for pupils’ spiritual, moral, social and cultural development is exceptional.

School leaders and governors, through the Avanti Trust, are wholly committed to ambitious outcomes for all pupils.”

Ofsted



Admissions

SCHOOL ADMISSIONS POLICY

<https://avanti.org.uk/avantipark/admissions/>

APPLY VIA THE HERTFORDSHIRE COUNTY COUNCIL ADMISSIONS WEBSITE

<https://www.somerset.gov.uk/education-and-families/apply-to-start-school/>

A Journey of Self-Discovery

AVANTI SCHOOLS TRUST

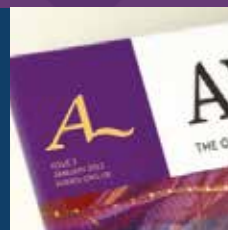
The Trust website is a good starting point to learn about the Avanti vision at play in our schools. Short videos are also online.



www.avanti.org.uk

HIGHLIGHTS AND UPDATES

The Avanti Life magazine brings you the very best of what's happening within our family of schools. Also available in print.



www.avanti.org.uk/life

SCHOOL LIFE IN DETAIL

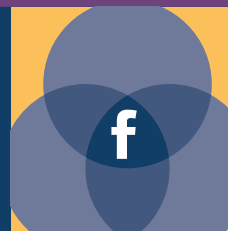
The school website offers up-to-date information on key aspects of school life, from ethos to admissions; school lunches to job opportunities.



www.avanti.org.uk/avantipark

SOCIALISING

We use Facebook as a shared community page where many school and Trust highlights are broadcast – a great way to stay informed and in touch.



www.facebook.com/avantischools

Avanti Park School

Park Road
Frome
Somerset
BA11 1EU

Phone 01373 832 804
Email avantipark@avanti.org.uk
Website www.avanti.org.uk/avantipark

TWITTER

At Avanti Park we use twitter to keep everyone updated about the amazing work our teachers and pupils are doing.



[@avanti_park](https://twitter.com/avanti_park)



AVANTI PARK
SCHOOL

Avanti Park School is part of the Avanti Schools Trust
Avanti Schools Trust is a charitable company limited by guarantee registered in England & Wales
Registered No: 07506598 • Registered Office: Avanti Schools Trust, Wemborough Road, Stanmore, Middx, England, HA7 2EQ