



AVANTI PARK  
Excellence · Virtue · Devotion

ISSUE 47  
9th Feb 2024

SCHOOL CONTACT DETAILS  
[avantipark@avanti.org.uk](mailto:avantipark@avanti.org.uk)  
[absence.ap@avanti.org.uk](mailto:absence.ap@avanti.org.uk)  
Tel: 01373 832804



MESSAGE FROM THE  
PRINCIPAL

# The Avanti Park Post

Dear parents and carers,

It's hard to believe that half term is upon us already!

This week has been primary careers week and as part of this the pupils have been visited by some of our wonderfully talented parents to share information about their careers. Thank you so much to all of those who gave up time to do this. If this is something you would like to help with next year, then just get in touch with Year 4 Teacher Alison Armstrong.

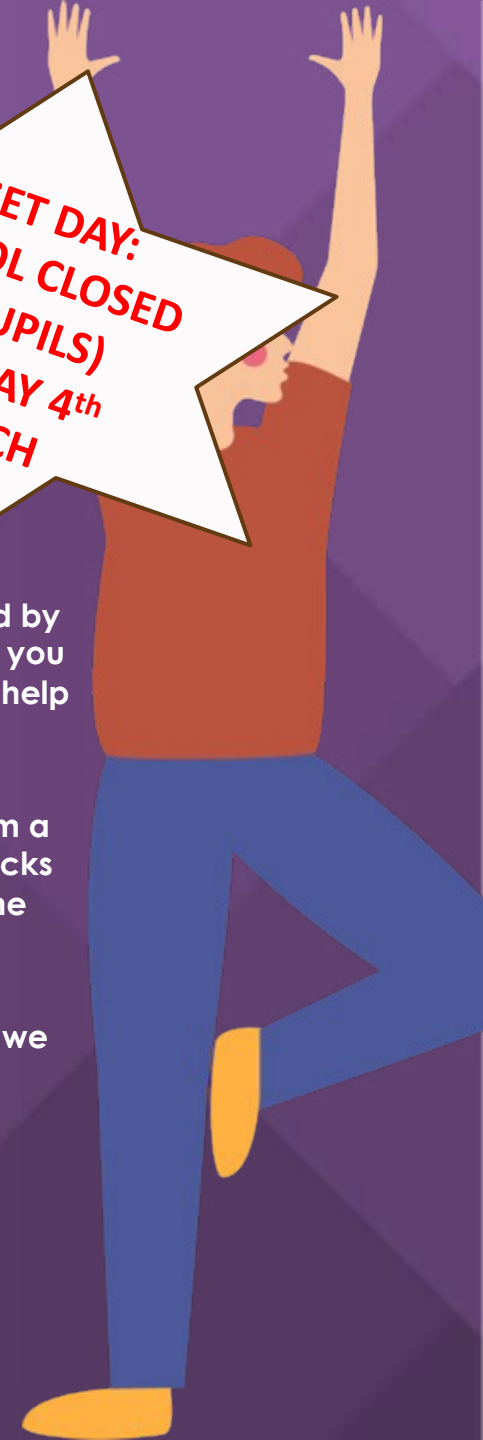
As part of our work with Frome Town Council around sustainable travel we had a visit from a professional BMX rider last week. The whole school were treated to a demonstration of tricks and daring stunts. He even persuaded our very own Mrs Incledon to have a go. Which she did without falling off! There are some photos later in the newsletter for you to enjoy.

I hope you have a good half term break, and we'll see you on the 19<sup>th</sup> of February when we return to school for Spring Term 2

With best wishes

Abby Atkins

INSET DAY:  
(SCHOOL CLOSED  
TO PUPILS)  
MONDAY 4<sup>th</sup>  
MARCH



**Maple:**

Ren  
Arlo  
Ivy

**Pine:**

Hope  
Alister  
Charlie

**Sycamore:**

Ember  
Rita  
Laurie S

**Rowan:**

Florence B-  
B  
Otis M  
Arrietty S-A

**Chestnut:**

Wren  
Romilly  
-

**Ash:**

Margot  
Milah  
-

**Cherry:**

Florence  
Sol  
Eliza

**Cedar:**

Ellie  
Xavi

**Willow:**

Fearne B  
Luna D-D

Star of the Week W/C

22/01/2024

29/01/2024

05/02/2024

**Beech:**

Sixten  
Otto  
Osian

**Hazel:**

Gryff  
Kyan  
Coco

**Holly:**

Sophie P-B  
Thea C-B  
Bel T

**Birch:**

Fionn  
Isy

AVANTI PARK SCHOOL

**EYFS/KS1 Art:**

Marlo D  
Frida M  
-

**EYFS/KS1**

**Yoga:**  
Sufi B  
Lydia V  
Gabriel F

**Walnut:**

Ben G  
Beau &  
Ryan

**House points so far this year....**

1st Harptree 14,652  
2nd Blackdown 13,817  
3rd Thurlbear 13,775  
4th Dommett 12,738

**Hawthorn:**

Jude  
Alissa  
-

**KS2 Yoga:**

Thomas B  
Lucas D-J  
Bonnie M

**KS2 Art/DT:**

Asta D  
Adam T  
Marco J-M

Star of the Week W/C

22/01/2024

29/01/2024

05/02/2024

**EYFS/KS1 PE:**

Jago T  
Olivia K  
Malaki T-F

**Elder:**

Lilly A  
Lula R  
Cosmo K

**KS2 PE:**

Ella M  
Theo H &  
Liberty L  
Maalu B

**Aspen**

Alfie  
Orla M  
Ana M

**AVANTI PARK SCHOOL**



# Principals Award



Elder  
Lilly A

Hawthorn  
Max L

Maple  
Alba

Pine  
Meredith  
M

Oak  
Marlow

Ash  
Ezra

Aspen  
Sophia W

Awarded  
each half  
term to pupils  
who  
consistently  
display Avanti  
Park's core  
values and  
virtues.



Beech  
Apollo

Cherry  
Rowan M

Chestnut  
Wren T

Walnut  
Mercedes  
H

Birch  
Rory J

Hazel  
Laser V

Willow  
Ruby G

Holly  
Sasha M

Rowan  
Molly B

Cedar  
Zidane

Sycamore  
Marco J-M

# Interhouse Sports



On Tuesday, Year 1 took part in an interhouse multi skills event run by the year 8s. They were split up into their houses and then rotated around 6 activities to develop hand-eye coordination, agility, balance, endurance and team working skills. They all had a brilliant time scoring points in activities such as the number of times they could hit the balloon in the air with a tennis racket, how many times they could get the bean bag in the hoop and how much treasure they could collect. They were really engaged and enthusiastic throughout. Well done Year 1!

The winning team for Beech Class was Blackdown with 714 points  
The winning team for Cherry Class was Thurlbear with 579 points

Thanks to the year 8 sports leaders for running the event. You were all fantastic.

Nuala, Lilly, Iris, Cosmo B, Tom, Islarose, Sam, Kayden, Jude, Isla, Lilia, Cosmo K, Scarlett, Oscar, Max, Sarina, Jamie, Lyrah, Will, Lula, Lyra.





# Year 7 & 8 Fitness in PE



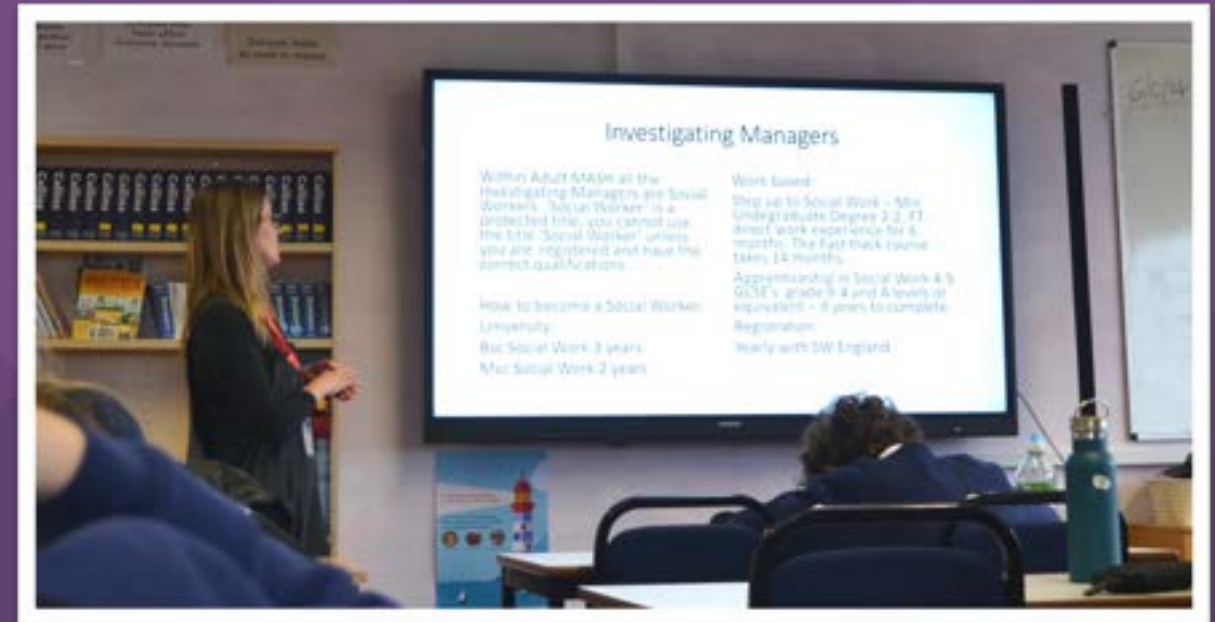
Year 7 & 8 have just come to the end of their Fitness unit of work. Their aim was to develop their cardiovascular and muscular endurance through different activities. This was tested at the start of the unit and at the end of the unit through the 12-minute cooper test and the 1 minute sit up test. All groups enjoyed using the recently purchased boxing gloves and pads. Boxing develops a range of fitness components such as cardiovascular endurance, muscular endurance, power, strength, speed, balance and co-ordination. We combined learning 3 different punches, the jab, hook and uppercut alongside running and sit up and punching exercises. I will soon be starting a Boxercise (boxing and exercise) lunchtime club for Year 6,7 & 8.

Mrs Cornish – KS3 PE

Photos of Year 7 Walnut Class taking part in their Boxing PE lesson.



# Careers Week



A huge thank you to the parents and guardians who volunteered their time to talk to our students about their jobs. Children learned about a wonderful variety of different careers from an Ardman animator to care workers, artists and a Brand Story teller.



# Dress as a Job Day



As part of Career's week, students were invited to come to school wearing an outfit that represented a career or job. Here are some of the fantastic outfits that the children wore.



# Somerset Music Hub Workshop



There was a whole-school music assembly this week which was led by the Somerset Music Hub -. They then went on to host a workshop for year 4 preparation for Year 4 joining with other Somerset schools in a concert at the 'Cheese and Grain' on 13<sup>th</sup> March.



# Fusion Extreme – BMX



As part of the school's effort to promote sustainable travel, we were very lucky to have a visit from pro BMX stunt champion Matti Hemmings. Everyone was thrilled by his impressive tricks and he talked about ways in which we can travel to school in a greener way.





# Fusion Extreme – BMX



# Focus Day – Gratitude.



Students spent the day learning about gratitude as part of the focus day, tying in with the Avanti Values. The children had lots of fun making thank you cards.





# Focus Day – Gratitude.



Students in Holly class  
made gratitude trees  
during the recent focus  
day.



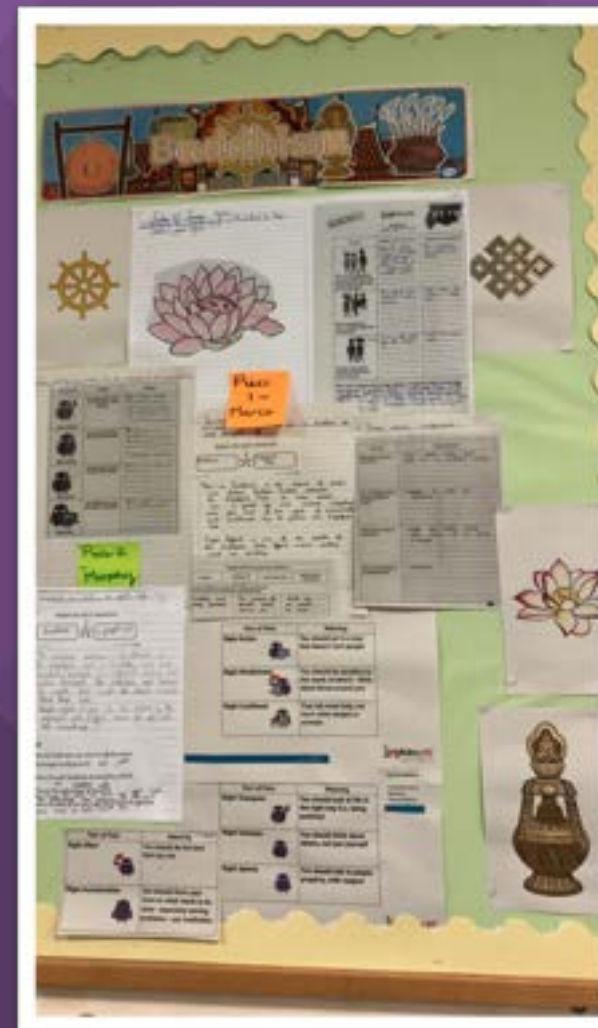
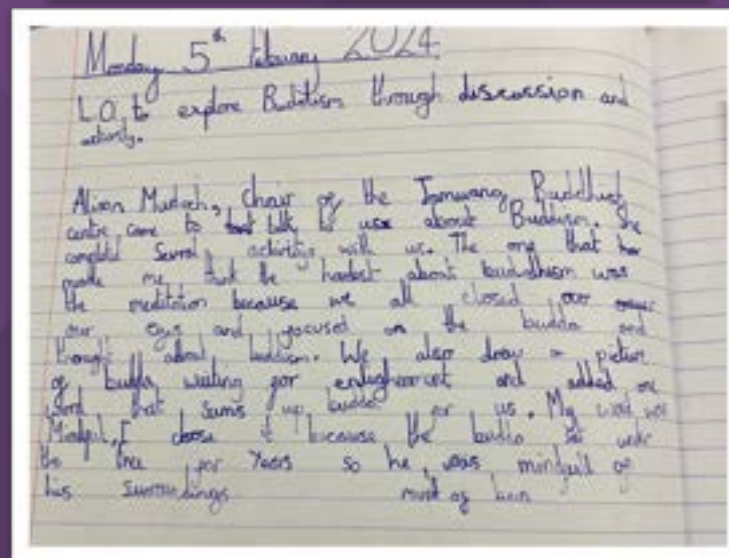
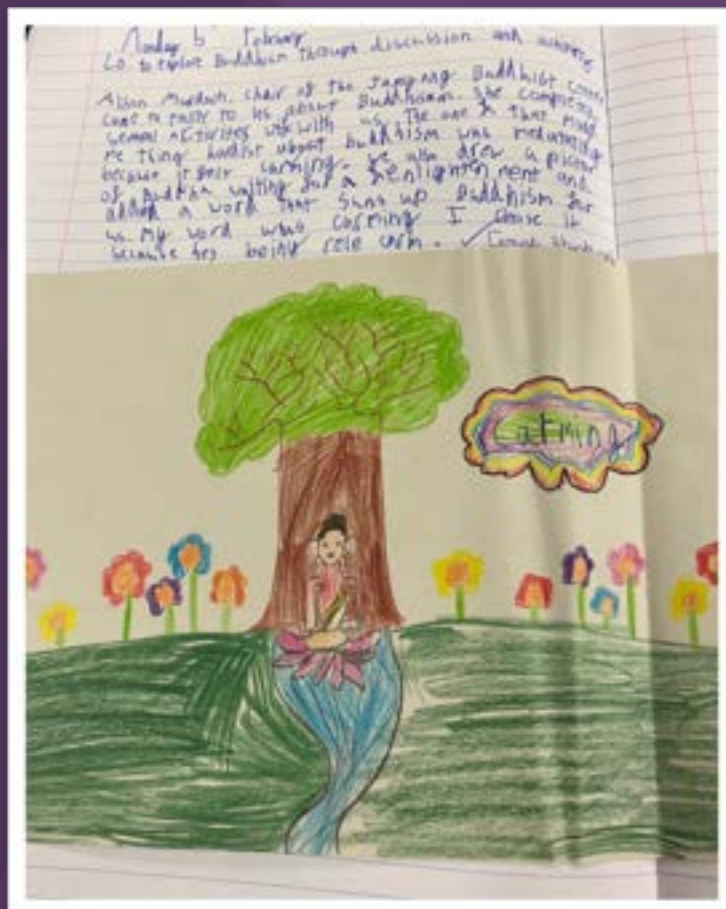
# In the Classroom



Children had a team work challenge in PSHE last week. – They were put into groups and tasked with designing a garden.



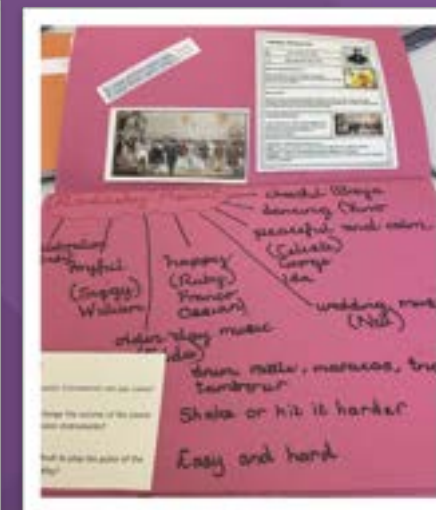
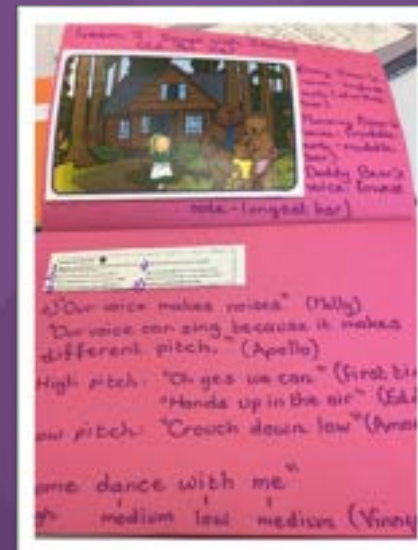
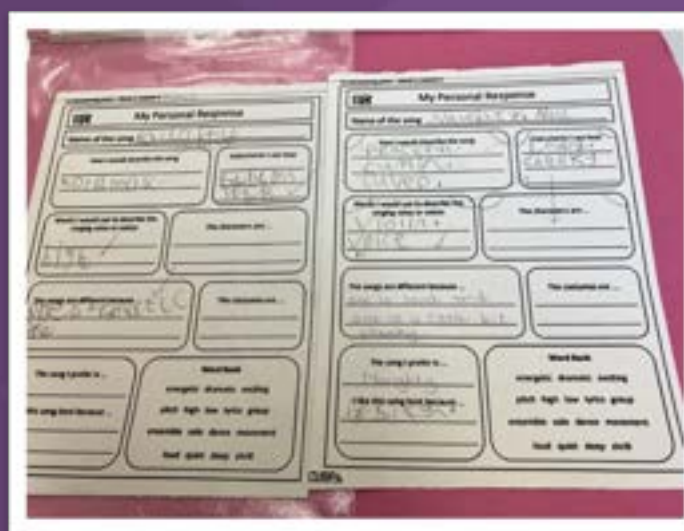
# In the Classroom - RE



Great examples  
 Year 4 RE  
 work from  
 the  
 classroom



# In the Classroom - Music



Year 1 and Year 2 record their learning from their weekly music lessons in these bright and colourful floorbooks. They have explored several different genres of music this year and discussed rhythm, pitch and the instruments used. They have sung and played on untuned percussion and used the musical vocabulary which they have learned to develop their personal responses to the music.



# KS3 Food Tech



Students in Year 7 & 8  
Have been cooking up a  
storm in their Food Tech  
lessons. Last week they  
were making delicious  
Samosa's



# Around the school



Sol's wonderful clay models!

Avanti Park Eco Council conducting a walk of the school grounds as part of an environmental survey. We are going to put an action plan together to make the school an even better place





# Safer School Streets



Frome Town Council  
Frome Town Hall  
Christchurch St West  
Frome  
BA11 1EB



7<sup>th</sup> February 2024

Dear Parent/Guardian,

## Safer School Streets

As you may know, your child's school falls within Frome's new Safer School Streets trial zone. The 18-month pilot will begin during the school summer term. In preparation, construction work is due to start by the end of February 2024.

## What is a 'Safer School Street'?

A Safer School Street is an area that limits vehicle access during school pickup and drop-off making it safer for children to walk, wheel or cycle to school.

## What does it mean for me?

During the trial, some of the roads around your child's schools will be closed. Please walk, wheel or cycle to school, or if that isn't possible, park outside the School Streets zone and walk the rest of the way. You can find details of the road closures via the links below.

## What construction work is planned?

Contractor Northavon will be installing courtesy crossings, dropped kerbs, tactile paving, build outs to the footways, updated road markings, benches, cycle stands and planters. The markings will include some innovative surface patterns outside the schools to make it clear to drivers that they are entering a school zone. All streets in the area will become part of a new 20 mph zone.



## What will the trial involve?

During the trial, roads will be closed at the following times:

- Park Road: **8.25am to 8.55am and 3pm to 3.30pm**
- Junction of Nunney Road and Oakfield Road, to the Royal Oak pub and down to the bottom of Critch Hill (including Whitemill Lane): **8.10am to 9am and 2.45pm to 3.30pm**

## How can I stay in touch?

For regular updates and to take part in our survey once the trial begins, please sign up to our mailing list at <https://bit.ly/school-streets-mailing-list>.

Alternatively, you can complete the survey on paper once the trial has begun, by popping into Frome Town Hall or email your thoughts to [info@frometowncouncil.gov.uk](mailto:info@frometowncouncil.gov.uk). You can also view and download the Safer Schools Streets plans from the Frome Town Council website at <https://bit.ly/frome-school-streets> or view them on the Town Hall noticeboards.

Yours,

Peter Wheelhouse  
Deputy Town Clerk



## MONDAY FOREST SCHOOL CLUB!



Exciting outdoor activities for school years 4-6.

Register now, limited slots available.

[www.bookwhen.com/bridgingnature](https://www.bookwhen.com/bridgingnature)



"Hi folks We've had some awesome things happen at Monday Forest School Club with Kevin and Charlotte at Bridging Nature from making a tree swing, learning how to use tools well, mini adventures, scavenger hunts, fire making skills, making candles, roasting sloe berries and so much more - come join the gang after half term!

Snack included - please follow link for booking and more information."

<https://bookwhen.com/bridgingnature>





# Traffic and Pedestrian Management Plan

Please see below a copy of the school *Traffic and Pedestrian Management Plan* details of which have been in place since the school first opened in Frome in September 2014. Please can we ask all parents to read this carefully. Many thanks, the Avanti Park Health & Safety Team.

## TRAFFIC AND PEDESTRIAN MANAGEMENT PLAN

### **Pedestrian Movement:**

We ask all parents to ensure their children walk, cycle or scoot to school where possible.

Parents, pupils, and staff are asked to use the pavements and to be thoughtful about other pedestrians' using Park Road.

Pupils on scooters and bikes are requested to walk their bikes once they reach the boundaries of the school, at the main school entrance and down the school road to the pond gate.

There are several stone and brick walls bordering the school grounds including a low wall on the edge of the neighbouring Christchurch Parish Hall. We request that parents do not let their children walk along these walls as we cannot guarantee their safety.

No pedestrians to walk to or from the pond gate through the car park

### **Vehicle Movement:**

As a school community our aim is to limit vehicles entering Park Road as it is a no through road and there is very limited parking on the road. We request that parents driving from a distance to the school park in one of the local car parks or in the surrounding area and walk their children into school.

### **Limiting vehicle movement is important for:**

- Safety of pupils and parents
- Safety of other pedestrians and Park users
- Being good neighbours to people who live and work on Park Road
- Vehicle use of the Car Park:

There is no drop off parking at the school site for parents except by special arrangement.

There are four drop off spaces and three disabled spaces that are for the use of pupils with access needs and these spaces need to be arranged with either the School Business Manager or the school SENDCo

There is a one-way system in place in the car park and all vehicles will enter via the top entrance and anyone wishing to use this entrance will need to complete the 'Use of Car Park Form' available from the office.

All vehicles to drive at a maximum speed of 5mph

The car park will be assessed for safety in conditions of ice and snow and may on occasion be closed by the Health & Safety team in order to keep staff, pupils, and parents safe.

No vehicles will be allowed on site during the school day unless accompanied by two members of the Site and Health & Safety Team.

# Special Thanks



**AVANTI PARK**  
Excellence · Virtue · Devotion

We are continuing our “Special Thanks” scheme in to the new year whereby parents, guardians, and carers are able to nominate and recognise staff for their efforts for supporting members in our Avanti community. This scheme was piloted at Avanti Park last year and made a real difference to our staff and their wellbeing.

To nominate a member of staff, please click on the following link:

<https://avanti.org.uk/avantipark/parents/staff-nominations-for-special-thanks/>





# Stay Safe, Be Well



## Right of the week

Children have the right to use their own language, culture and religion - even if these are not shared by most people in the country where they live.

**30**



**AVANTI** SCHOOLS  
TRUST

