



AVANTI GARDENS  
SCHOOL  
Family Bulletin

DATE	EVENT
Every Friday	PTA Market 3:15pm – 3:45pm
Friday 17 <sup>th</sup> November	Odd socks day for Anti-bullying week
Friday 24 <sup>th</sup> November	Fraser Portraits. Photos of children missed.
Saturday 2 <sup>nd</sup> December 12 – 3:30	PTA Christmas Fayre
Wednesday 6 <sup>th</sup> December	Y2 Performance 09:30- Gates open at 09:15 EYFS Performance 16:00 - Gates open at 15:45
Thursday 7 <sup>th</sup> December	EYFS Performance 09:30- Gates open at 09:15 Y2 Performance 16:00 - Gates open at 15:45
Wednesday 13 <sup>th</sup> December	Y1 Singing 09:30- Gates open at 09:15 KS2 Singing 16:00 - Gates open at 15:45
Wednesday 13 <sup>th</sup> December	Christmas Jumper Day and School Christmas Dinner
Thursday 14 <sup>th</sup> December	KS2 Singing 09:30- Gates open at 09:15 Y1 Singing 16:00 - Gates open at 15:45

## UPDATES

### FRASER PORTRAITS DEADLINE

The deadline for ordering your photographs from Fraser Portraits is midnight Sunday 19<sup>th</sup> of November.

Fraser Portraits will also be returning to the school to photograph any children that were missed last time on the 24<sup>th</sup> of November.

# UPDATES

## Winter Fayre - Refreshments Volunteers

We need volunteers to help us run our fabulous refreshments stand at the Winter Fayre!

Can you spare a couple of hours to make our fayre amazing?  
Please fill in the form let us know!



[Volunteer at the Winter Fayre](#)

## Stall Holder Application Form

We welcome a wonderful variety of handmade crafts and stalls at our winter fair! Please apply for your table using this form.

[Book a stall at the Winter Fayre](#)

## CLUBS

Yoga Club for Key Stage 2 on Thursdays 3.15-4.15pm, starting 16<sup>th</sup> November, you can book this here:

[Yoga Space - the calm club](#)

## Set and Prop Design After School Club

Open to Key Stage 2

Would you like to help design and make props/sets for the Christmas plays and concerts at Avanti Gardens?

Come along to this free afterschool club and get creative!

Thursdays 3.15 - 4.00 pm in the Art Studio.

Run by Mrs.Hopkins and Miss B.

Sign up to this club will be available on Arbor at 7pm on Monday.





AVANTI GARDENS

Winter

★ FAIR

SATURDAY 2ND DECEMBER

11AM - 3PM

*Delicious Food & Refreshments*

*Christmas Crafts Market*

*Wreath Making, Craft Workshops*

*Grotto, Raffle*

**AVANTI GARDENS PRIMARY SCHOOL,**

OLDBURY COURT ROAD ENTRANCE  
(SPORTS HALL ENTRANCE, AT THE BACK),  
FISHPONDS, BS16 2JG

# COMMUNITY NEWS



## ROAD SAFETY WEEK COMPETITION

Create a bold and bright design to encourage drivers to reduce their speed. If you would like your child to enter this competition, you can bring it into school. The deadline is Thursday 16th November. Designs in A4 in portrait or landscape and be created digitally or by hand.

## Unique Voice Anti-Bullying Parent / Carer Session

**Wednesday 15th November 2-2.30 on Zoom.**

*In this workshop the Unique Voice facilitators will explore the following with parents/carers;*

- Support in understanding the risks of bullying situations and identifying signs and symptoms.
- Empower you to build upon your role as your child's trusted adult.
- Give practical and creative tools you need to recognise, report and resolve bullying situations.

[To attend the event please register FREE here.](#)



Willow Tree Kindergarten are recruiting for a new Lead Teacher and Assistant at our St Werburghs setting.

Please look at our website for more details <https://www.willowtree.org.uk/>

Or contact Nicola Tapp directly on [nicola@willowtreekindergarten.org.uk](mailto:nicola@willowtreekindergarten.org.uk)

FULLY FUNDED FOR 18 MONTHS

# Food and Nature Connection Group

FREE

+FREE REFRESHMENTS

STARTS TUESDAY  
14TH NOVEMBER 2023

EACH WEEK WE WILL MEET ON TUESDAY'S AT THE NISSEN HUT IN EASTVILLE PARK AND HAVE A 'WORKING LUNCH' FROM 11-2PM

INSPIRATION \* CONNECTIVITY\*PRACTICAL SKILLS\*WELLBEING

**ACTIVITIES WILL INCLUDE:** COOKING, GARDENING, NATURE ID, LOCAL WALKS, GREEN CRAFTS, CONSERVATION, FORAGING AND MANY MORE, AGREED BY THE PARTICIPANTS.  
EMAIL: [EASTVILLE WELCOME SPACE@GMAIL.COM](mailto:EASTVILLE WELCOME SPACE@GMAIL.COM)

REGULAR GUEST HOSTS

Supported through



people's  
health  
trust



FIND US ON FACEBOOK

'EASTVILLE WELCOME SPACE'



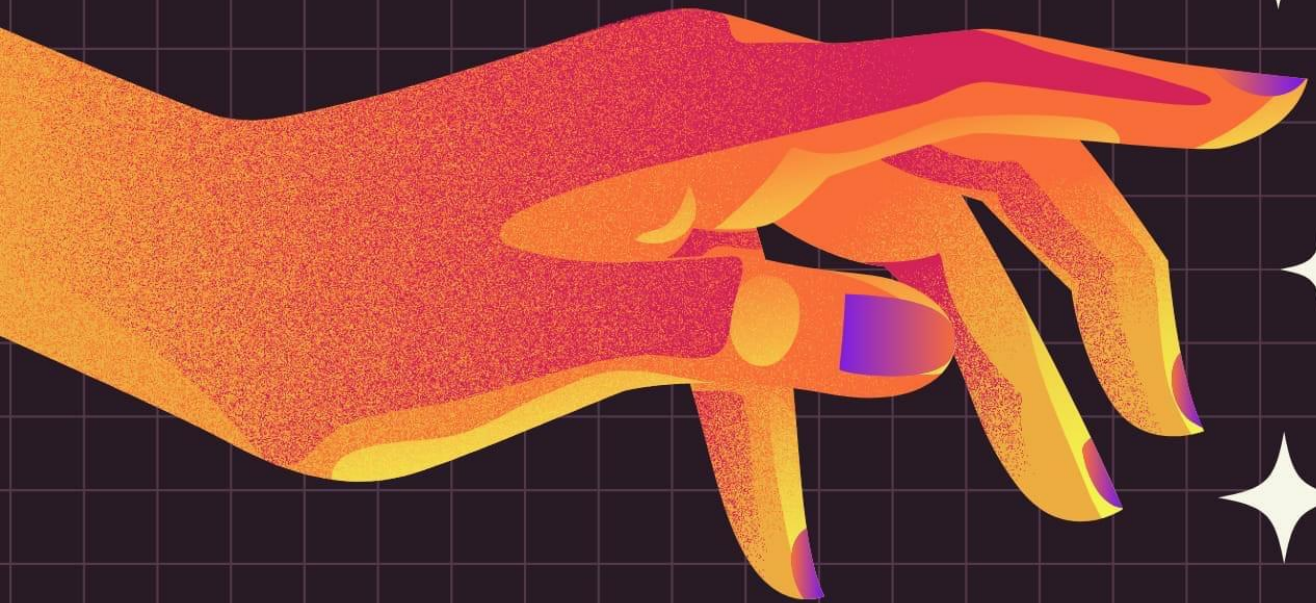
FULLY FUNDED FOR 18 MONTHS

# Creative Group



+ Free refreshments provided

Every Monday Evening 6-9pm  
@ The Nissen Hut (Eastville Park)



Unleash your creativity or discover a new hobby at the  
Community Hub (Nissen Hut) in Eastville Park

Suitable for all adults to come and 'have a go'! Meet your community and make friends.

No experience required! Regular guest tutors.

Activities will include: Wreath/garland making, willow weaving, ceramics, photography, printmaking, textiles and many more to be decided as a group.

EMAIL: [eastvillewelcomespace@gmail.com](mailto:eastvillewelcomespace@gmail.com)

Starts Monday 13th  
November 2023

Supported through



people's  
health  
trust



Find us on Facebook:  
'Eastville Welcome Space'

## ATTENDANCE

[NHS : Is my child too ill for school?](#)

## SECONDHAND UNIFORM

<https://app.uniformd.co.uk/items/avanti-gardens-school>

Wishing you all a fun weekend. We really look forward to seeing you all next week.

From the whole Avanti Gardens Team



**Website:**  
[www.avanti.org.uk/avantigardens/](http://www.avanti.org.uk/avantigardens/)



**Twitter:**  
[twitter.com/SchoolAvanti](https://twitter.com/SchoolAvanti)



**Facebook:**  
[www.facebook.com/SchoolAvanti/](https://www.facebook.com/SchoolAvanti/)



**AVANTI** SCHOOLS TRUST