

Revisit - to be able to recap previously taught sounds (graphemes) and tricky words

Date:

1. Recap previously taught sounds and HFW
2. Recap the HFW (click to reveal)

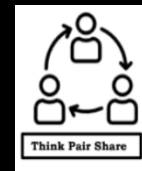


will

went

Word bank
diagraph
tricky words

Teach – to be able to correctly pronounce the grapheme 'x'.
- To be able link the sound to words and identify the sound in written words



Date:



x ray

saxophone



x x

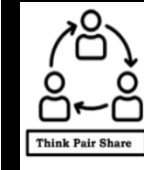
wax



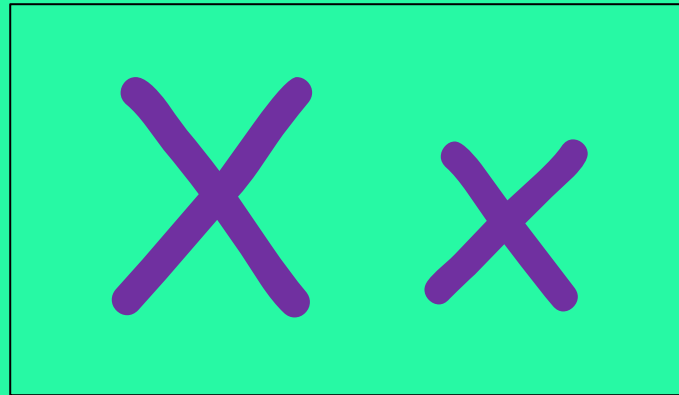
taxi



Teach – to be able to correctly pronounce the grapheme 'x'.



Date:



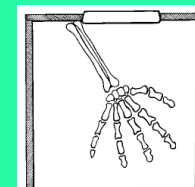
Listen to Jolly Phonics:

<https://www.youtube.com/watch?v=pSadirablKc>



X

Pretend to take an x-ray with an x-ray camera, saying *ks, ks, ks.*



Practice/ Apply – to be able to form the sound correctly.

Date:



Form it on different parts of the body and then on your board.

OR

Form the sound on a letter and trace card/ sand/ flour

Can you identify the sound from a choice of 2-3 sound cards?

Practise: To use phonics to read simple captions

Date:

x

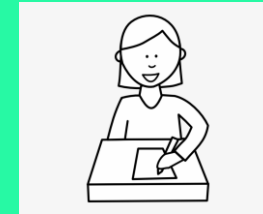
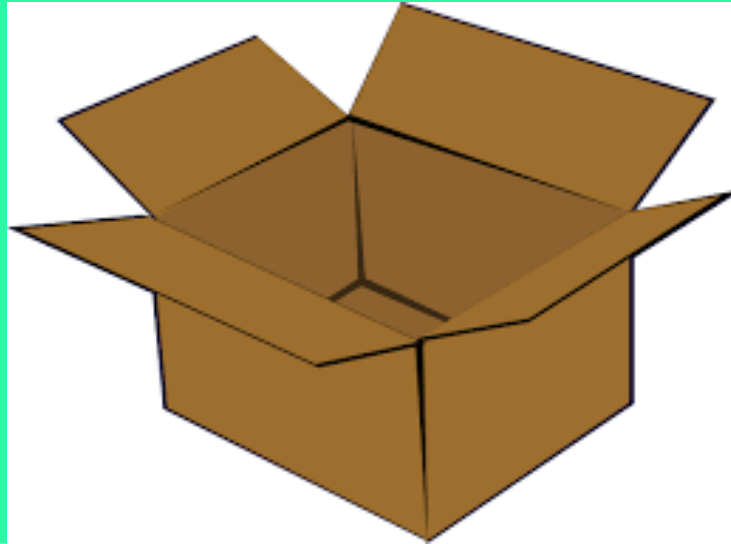
I went into the big box.

Extension task: verbally extend the sentence, see if you can add in another alliteration.



Practise: To be able to segment sounds to make simple words and captions

Date:



--	--	--

Word bank

The
To
I
no
go
into

Extension task:

Can you put the word into a sentence?

Extend the sentence using 'and'

What word rhymes with box... fox or toy?

Practise: To be able to segment sounds to make simple words and captions

Date:



--	--	--

Word bank

The
To
I
no
go
into

Extension task:

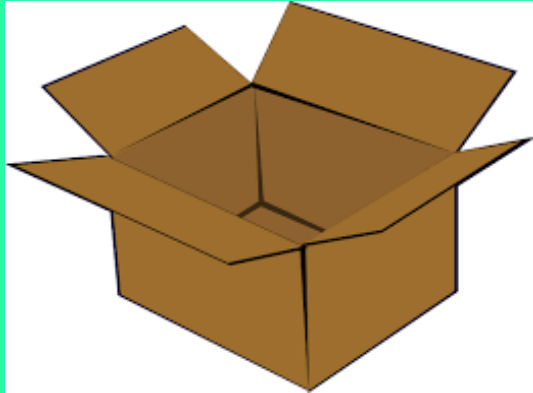
Can you put the word into a sentence?

Extend the sentence using 'and'

Can you use the internet to find one interesting fact about foxes?

Apply: To be able to segment sounds to make simple words and captions

Date:



ABC

capital letters



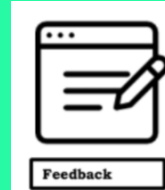
finger spaces



full stops



read it again



Task:

- The fox is in the box
- Simple caption (fox is red)
- use letter cards/ magnetic letters to make words- extend to make a sentences using the cards

Word bank

The
Fox
Is
In
The
box

LO: To answer how and why questions

Date:

1. How do you think the gingerbread man felt when he was being chased?
2. Why do you think the gingerbread man got stuck when he got to the river?



Answer the questions as a class or with your TP.