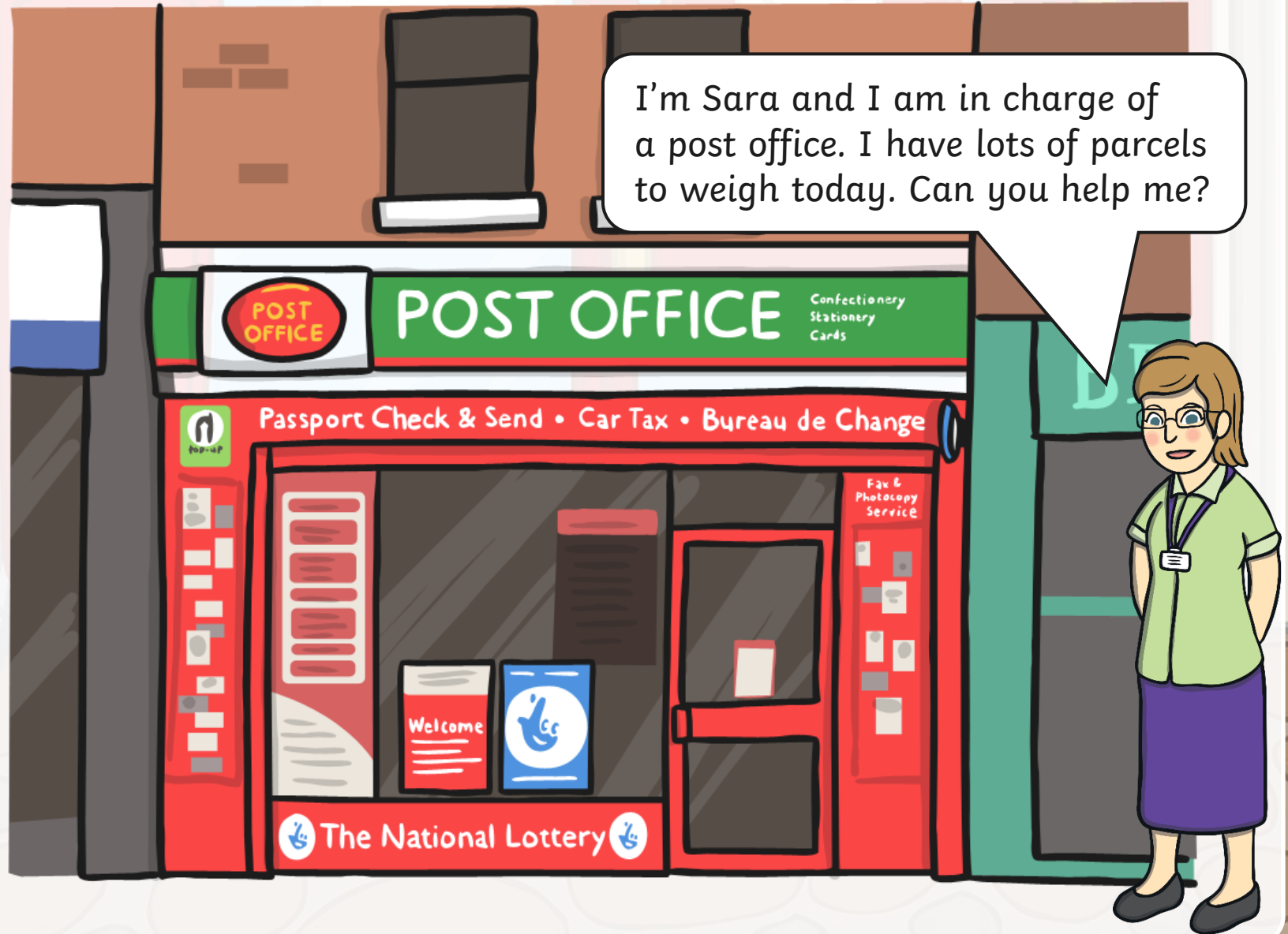


Weighing Parcels at the Post Office

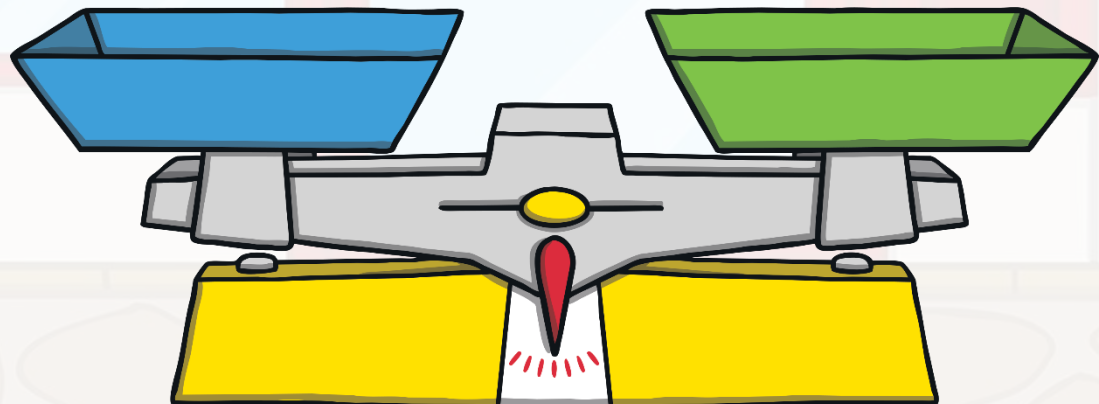


twinkl

I'm Sara and I am in charge of a post office. I have lots of parcels to weigh today. Can you help me?

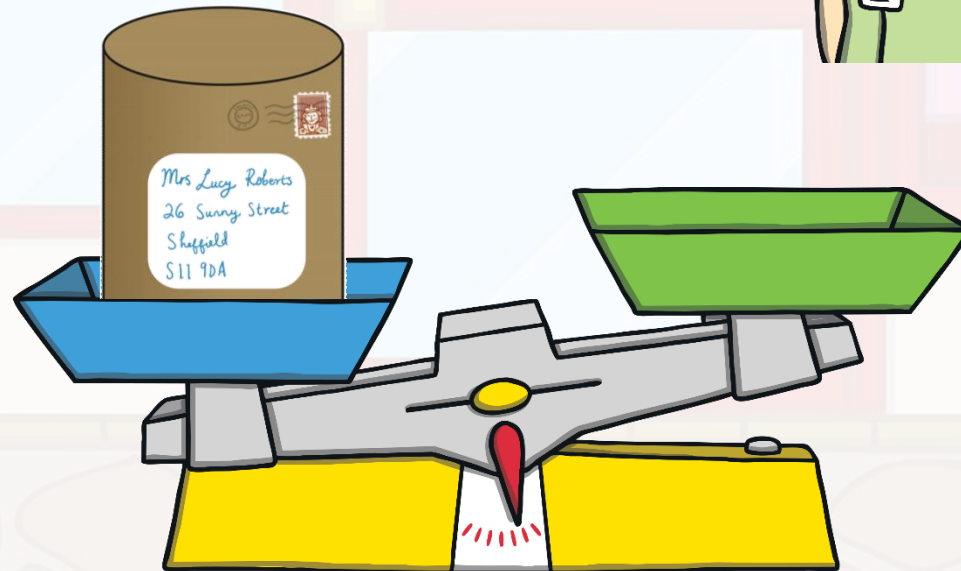


What do you think will happen when I add the parcel to the balance scale?
Click on the parcel to see what happens.

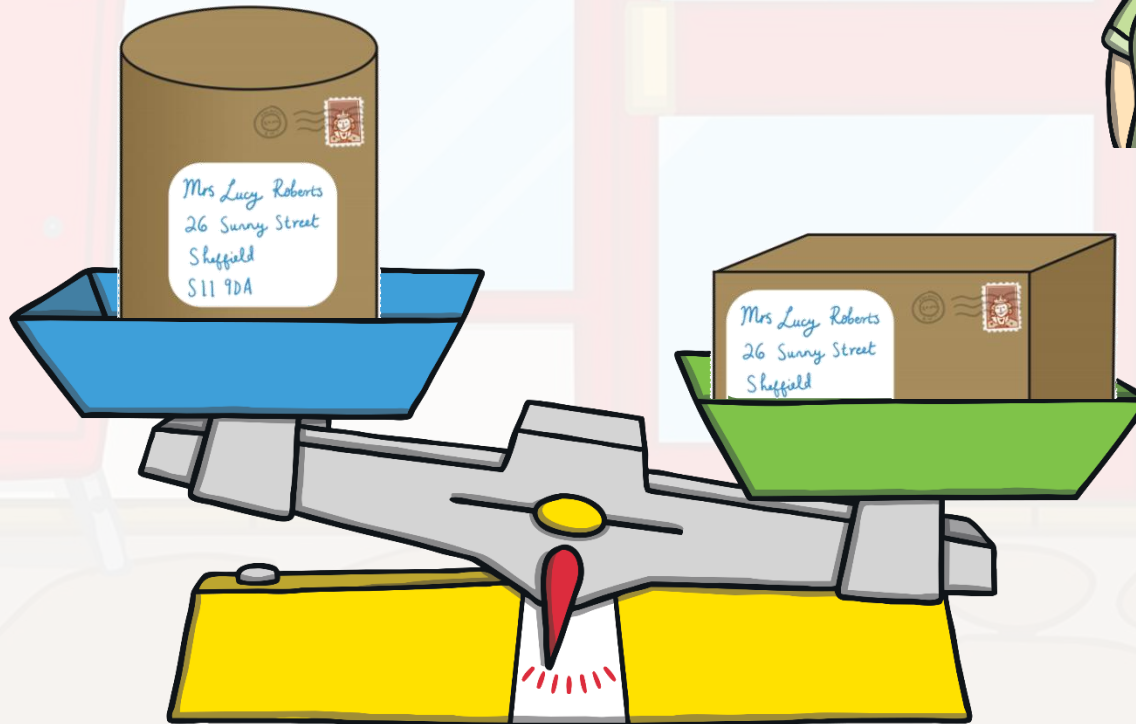


What do you notice about the balance scale now?

Click on the next parcel to see what will happen.



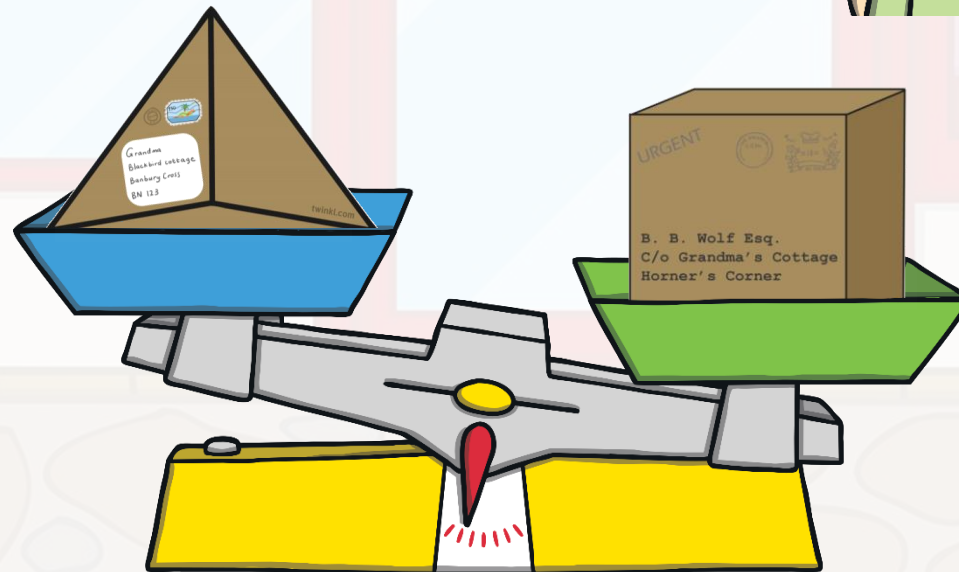
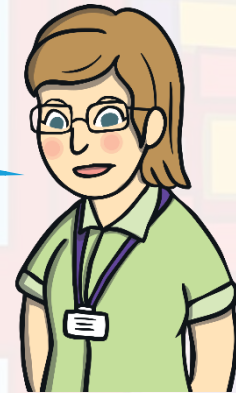
**Which parcel do you think is heavier?
How do you know?**



Which parcel is heavier? How do you know?

Can you click on the heavier parcel to put it into the sack?

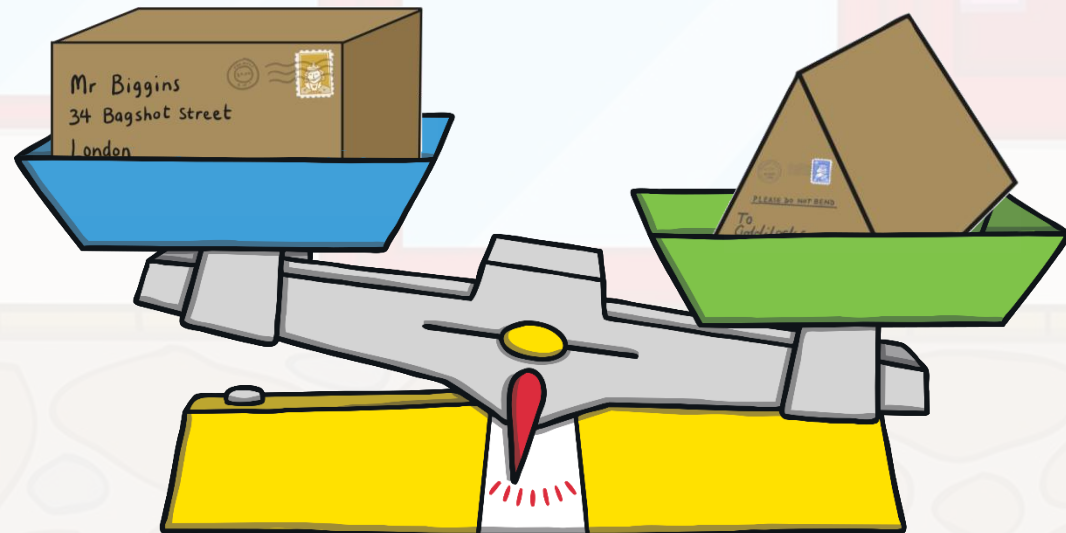
Try again.



Which parcel is lighter? How do you know?

Can you click on the lighter parcel to put it into the sack?

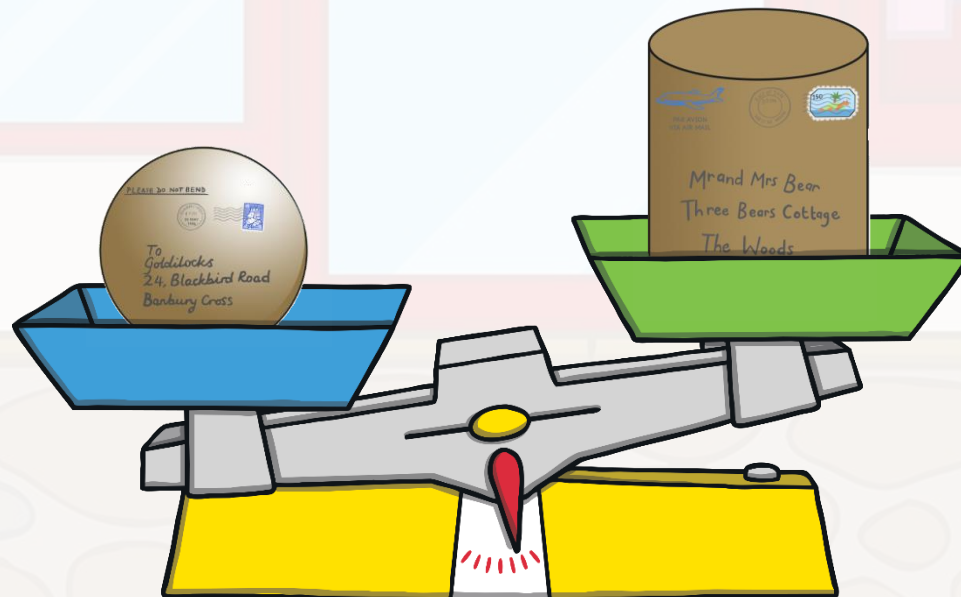
Try again.



Which parcel is lighter? How do you know?

Can you click on the lighter parcel to put it into the sack?

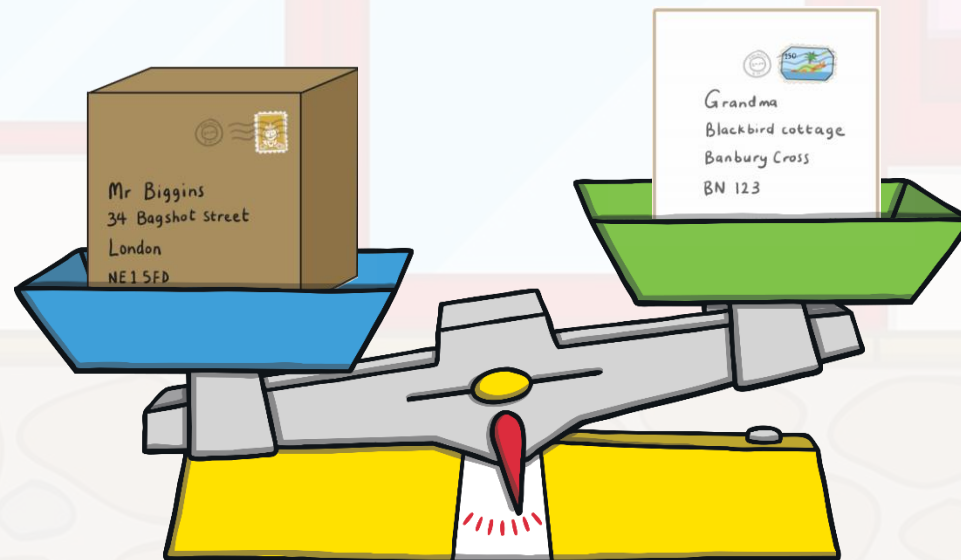
Try again.



Which parcel is heavier? How do you know?

Can you click on the heavier parcel to put it into the sack?

Try again.

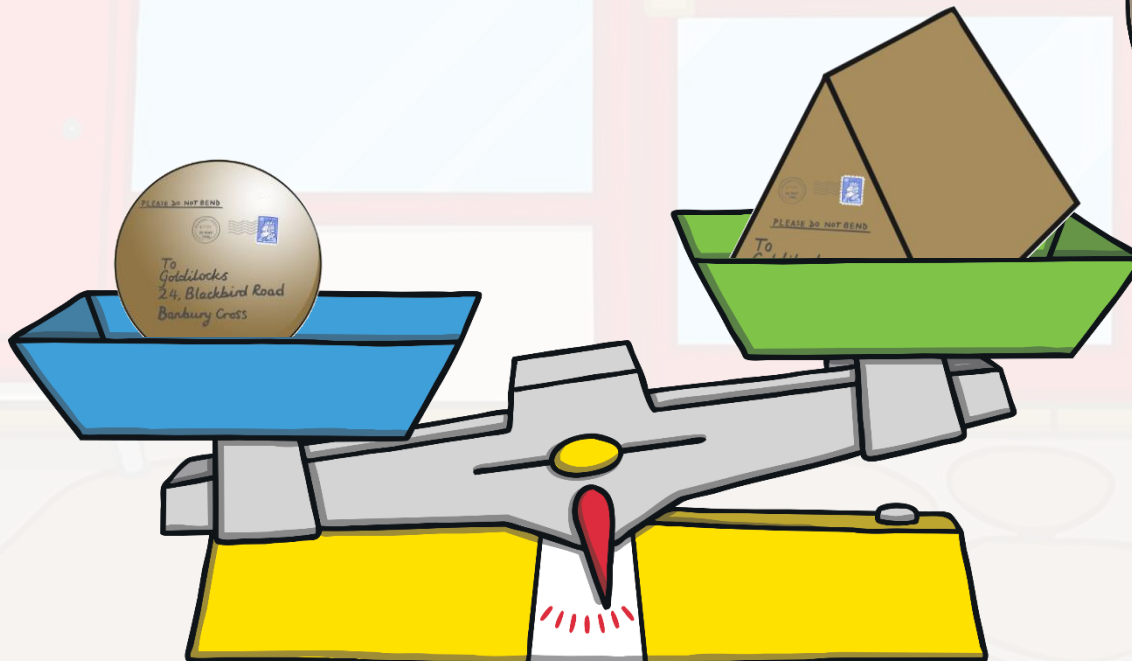


Sara looked at the two parcels on the counter and tried to guess which one she thought would be heavier without weighing them.

Talk to a partner and tell them which parcel you think is heavier. Why do you think that?

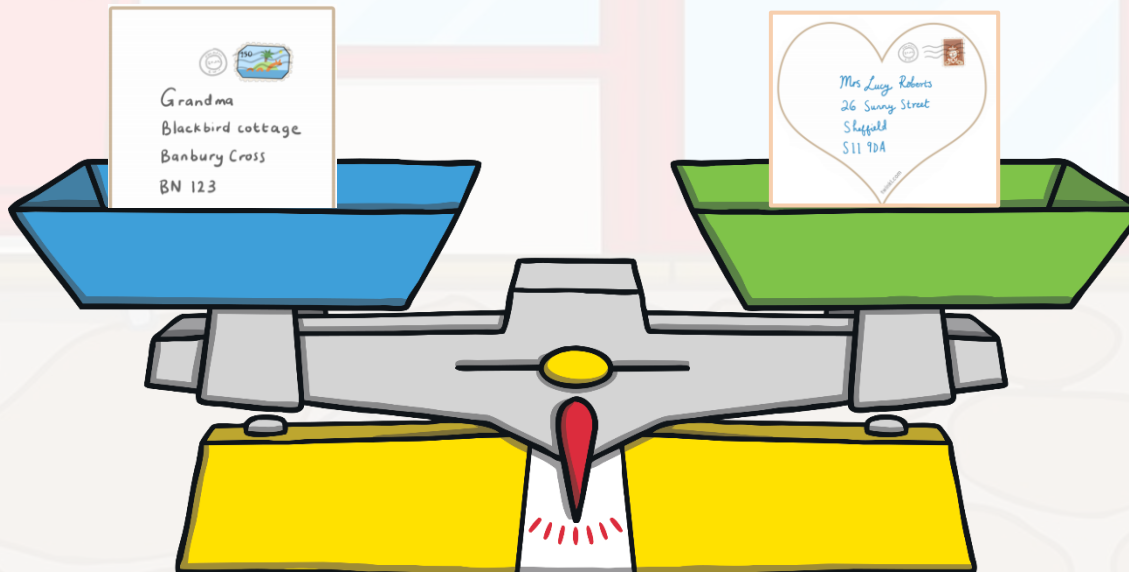


What do you notice about the parcels?
If a parcel is bigger in size, does it mean it is heavier?



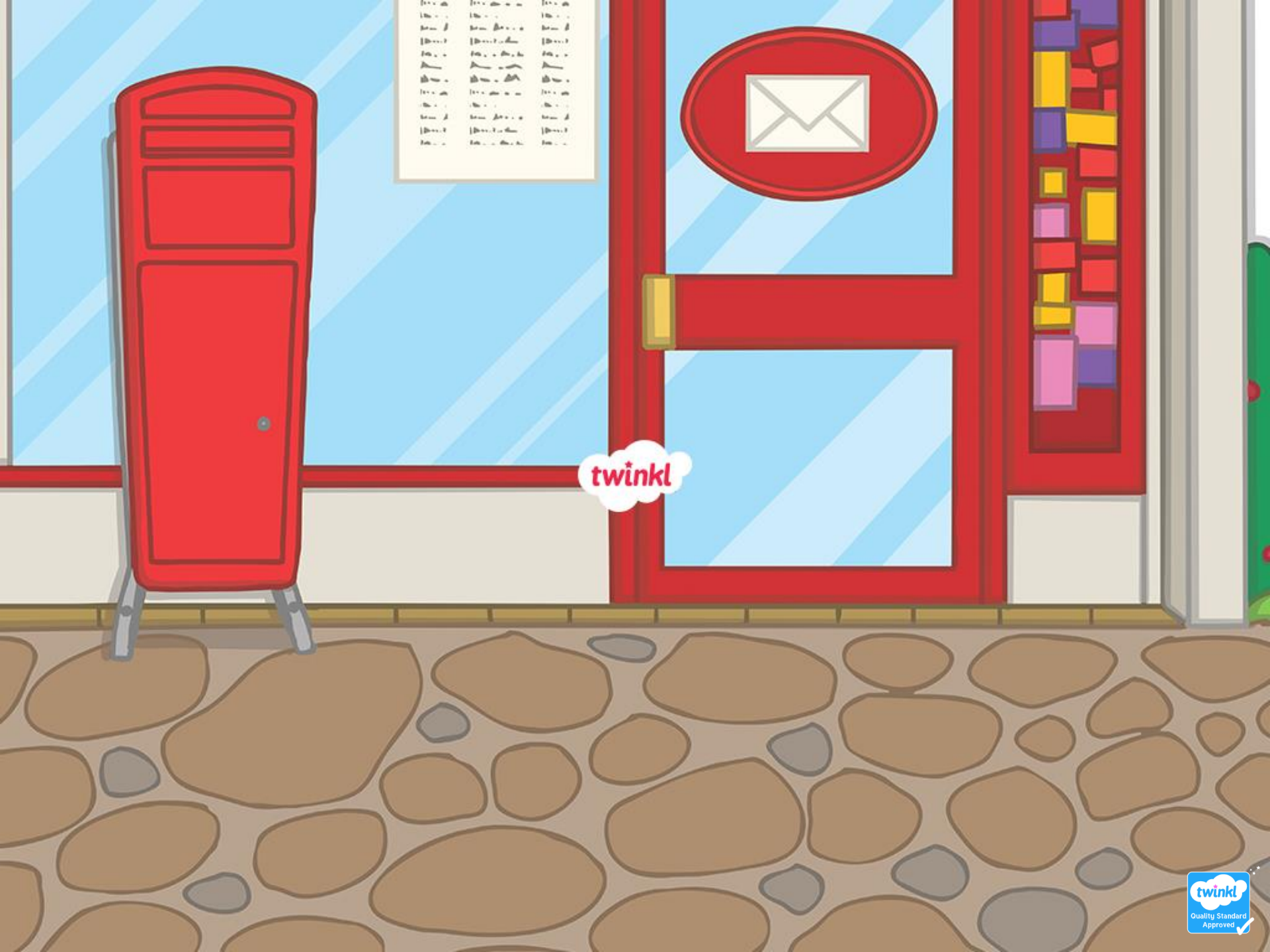
Sara weighed two letters and noticed something interesting.

What do you notice about the scales this time?
What do you think it means when the scales are balanced?



Thank you for helping me to
sort my parcels!





twinkl