



AVANTI MEADOWS

PRIMARY SCHOOL



◀ **4** Welcome



◀ **19** Uniform



6 Core principles ▶



20 Tour of the school ▶



◀ **10** Our commitment to parents, carers and students



◀ **22** School lunches



16 Learning and teaching ▶



24 Life at Avanti ▶



◀ **18** Curriculum



◀ **31** Admissions

Avanti Meadows Primary School, Bishop's Stortford



Welcome to Avanti Meadows Primary School from our Executive Principal

Welcome to our prospectus for Avanti Meadows Primary School.

Our school will provide parents and pupils with the highest standards of education and pastoral care. We want our children to take pride in their new school and for every member of the school community to work hard to provide high quality education, care and support for every child and every family. We will set the highest expectations from the outset to ensure that we provide creative learning experiences, which inspire and challenge our pupils to achieve the very best in all aspects of their learning.

Our curriculum is based upon the National Curriculum and we adopt a personalised approach in order to provide tailor- made learning paths for all pupils.

The site for Avanti Meadows is a brand new building and the facilities are bespoke, contemporary and first-class, which make for a unique learning experience. I hope that you will take this opportunity to discover more about the Avanti ethos and look forward to working with you to provide the best possible education for your child.

Mrs Sally Allan
Executive Principal



Our vision

At Avanti Meadows, our aim is to enable our students to be the very best version of themselves and ultimately contribute to making the world a better place (The Avanti Way).

Through a curriculum built on the Avanti three pillars and by actions underpinned by the six core values, students are able to learn, develop and grow into a life of fulfilled potential.



Core principles

 <p>We have incredible potential and can achieve this when nurturing all parts of ourselves – intellectual, emotional, physical and spiritual.</p> <p>1</p>	 <p>We choose how we wish to respond to life and what we nurture within.</p> <p>2</p>	 <p>We care for and respect all life – human, animal and plant – and live in a way that causes the least possible harm.</p> <p>3</p>
 <p>We each observe the one same reality from our own unique perspective and engage in open-minded dialogue to deeply enrich our vision.</p> <p>4</p>	 <p>We serve a higher purpose by living a meaningful and satisfying life of contribution.</p> <p>5</p>	 <p>We are nourished by personal relationships that fulfil our need to love and be loved, encouraging us to be the best we can be.</p> <p>6</p>

The three pillars

Our school prepares students for their respective life-journeys by promoting educational excellence, character formation and spiritual insight.



Educational excellence

Our vision for educational excellence is one where deeply inspired teachers nurture joyful students and nourish their innate passion for learning. Learning is a quest to discover each student’s unique gifts and potential and lay the foundation for their lifelong journey of learning. This is inseparable from high academic standards, where a challenging holistic curriculum cultivates independently thoughtful and reflective students by working towards a sense of mastery, emphasising depth, and not just breadth.



Character formation

Our vision for character formation is one where virtues are taught by example and a supportive community of learners fosters a powerful sense of individual and collective purpose. Learning develops for these conscious changemakers as a quest for making the world a better place, starting with oneself. The capacity to internalise and put into practice what we have learned is the true test of learning. Building this capacity demands an experiential, virtues-led curriculum that embraces collaboration, custodianship and global perspectives.



Spiritual insight

Our vision for spiritual insight is one where our interconnectedness with all living beings and with the universe, urges acts born out of humility and love, and the Self is perceived beyond its layers of coverings. Learning blossoms for these seekers as a quest for self-discovery and opens the door to their unlimited potential; an antidote to the emptiness of a materialistic or mechanistic world view. The curriculum unveils the possibilities of sacredness and transcendence at every moment and so engenders a deeply positive attitude to life, enduring happiness and heartfelt relationships.

Your child's journey

Our family of Avanti schools in **Bishop's Stortford** - **Avanti Meadows Primary School**, **Avanti Brook Primary School** and **Avanti Grange Secondary School** work collaboratively to ensure the smoothest transition from Primary to Secondary.

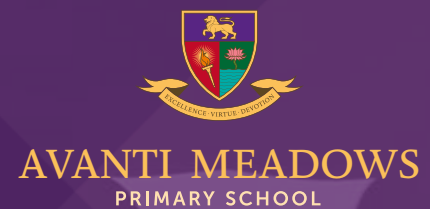
B I S H O P ' S
S T O R T F O R D



Key Stage
1 & 2



EYFS



TRANSFER TO
AVANTI GRANGE



Key Stage
3 & 4



Our commitment to parents, carers and students

We want to involve you as parents and carers fully in your child's education. By working closely with you we can ensure that each stage of your child's journey is stimulating, positive and enriching.

We will provide:

- The very best teaching in every subject and every classroom;
- A rigorous curriculum that challenges and stretches every student to be the best that they can be;
- A regular and robust assessment and reporting system that clearly informs you about your child's progress;
- An enrichment programme that includes academic, sport and music related activities;
- A wide range of local, national and international educational visits;
- Clear and precise feedback that enables every student to master key skills and build their understanding;
- Opportunities to contribute to the life of the school and develop their leadership skills;
- A safe learning environment in which your child can flourish and be happy



Modern new site



Avanti Meadows Primary School is part of the larger Avanti Learning Village, a new all-through (4 to 16) provision in the north of Bishop's Stortford. The new Avanti Learning Village will offer parents the opportunity for their children to benefit from a comprehensive and coherent learning journey from pre-school right through to aged 16 and GCSEs.

Year 6 pupils at Avanti Meadows Primary School are invited to apply for a place in Year 7 at the adjacent Avanti Grange Secondary School although parents and carers will be free to submit applications at other schools if they wish.

The new school building provides specialist teaching spaces, outdoor learning facilities such as forest school, sports pitches and a sports hall that will enhance the curriculum and learning for all students.





**PLACES
AVAILABLE
ACROSS
ALL YEARS,
RECEPTION
TO YEAR 6**



Why Avanti Meadows?

- ▶ New School with State-of-the-art facilities
- ▶ Holistic Curriculum which includes yoga, mindfulness, meditation and character formation
- ▶ Academic excellence for all in a calm, caring and nurturing environment
- ▶ All-through provision from Primary to Secondary phase



AVANTI MEADOWS
PRIMARY SCHOOL

The Avanti approach to Learning and Teaching

Learning and teaching in all Avanti Schools is underpinned by the Avanti Teacher Toolkit. Our teachers and teaching assistants are guided by the 12 Avanti Habits, rooted in cognitive science and evidence-informed practice. All our teachers are continuously developing their practice through exceptional professional development from the Avanti Institute, ensuring that our pupils benefit from the highest quality teaching in every lesson.

12 elements of great learning and teaching in Avanti Trust Schools

Through a planned programme of training and development supported by The Avanti Institute, we ensure that all Avanti Trust Schools have a highly developed sense of what constitutes great teaching. We continuously train and coach our staff on every feature of high quality pedagogy, in order that every student gets an education that is second-to-none.



We ensure that all our teachers:

1. Build positive relationships with pupils and each other
2. Begin and end lessons calmly with familiar routines
3. Use intentional seating and classroom set up
4. Create a flourishing learning environment by managing behaviour effectively
5. Have clear and ambitious learning intentions for all pupils
6. Are always context considerate and adapt practice appropriately
7. Activate daily review of prior learning
8. Present new material in small steps
9. Provide modelling and scaffolding
10. Give opportunities for guided and independent practice
11. Ask effective questions and check for pupil understanding
12. Review learning regularly before moving on to new content



“Plan activities that will enable students to demonstrate understanding and master skills.”

Curriculum

Early Years

At Avanti Meadows Primary School, we want our pupils' first experiences of education to be enjoyable and engaging. We expect all members of the school community to work collaboratively, with high aspirations and expectations of everyone, consistent with our ethos.

By the end of the Foundation Stage (Reception Class), we aim for all our children to have developed positive attitudes to school supported by positive relationships with adults, strong friendships, meaningful learning activities set in an engaging, calm environment and strong links between school and parents/carers. We also expect them to have a firm understanding of phonics, and will offer additional directed support to those with need.

Children will be offered a broad, balanced Early Years Foundation Stage curriculum. This allows plenty of opportunities to learn through play in a wide variety of contexts and focuses on: personal, social and emotional development; communication, language and literacy; problem-solving, reasoning and numeracy; knowledge and understanding of the world; and physical and creative development. Teaching will encourage all children to ask questions and talk about their play and learning.



Key Stages 1 & 2:

Throughout Key Stages 1 and 2, pupils will continue to develop a love of reading, through an effective balance of synthetic phonics, drama, speaking and listening tasks, guided reading and storytelling. We know that pupils who can communicate orally and in writing, and who understand the value and pleasure of reading, are more likely to have happy, fulfilling academic and personal lives.

With these skills, pupils will access a broad and balanced curriculum that includes:

- English, Mathematics and Science
- Arts (Music, Art, Dance and Drama)
- Computing
- Physical Education (PE)
- Humanities and Religious Education (RE)
- Yoga and Meditation
- Spanish (Years 3, 4, 5 and 6)
- PSHE (Personal Social Health and Economic education, including philosophy and ethics)

We aim to enrich the curriculum with memorable learning experiences, including educational visits and outdoor learning opportunities.

By the end of Key Stage 2, we aim for all our pupil to have the confidence, resilience and increasing maturity to deal with changes in school and at home, whatever they may be. We expect them to have developed: a love of reading; a thirst to enquire ask questions and find out; positive relationships; good behaviour; and key maths, musical and artistic skills to prepare them for their next phase of education.

Our compassionate and caring pastoral approach will encourage all pupils to reflect on their own faith or belief system, to explore their spirituality and enter the secondary phase of education with a reflective, critical thinking and compassionate mind. We want them to understand the impact of their choices on themselves, on others and on their environment, both locally and globally. We expect them to be positive contributors as British and World citizens.



Uniform

Uniform and achievement have always been a high priority for the Avanti Schools Trust. We believe the way in which students wear their school uniform reflects the importance which is placed on attention to detail and pride in the school. The smart appearance of our students has been appreciated by parents of prospective students and visitors to our schools. For more information about the school's uniform requirements please visit our website.

Tour of the school



Reception ▲

Avanti Meadows is located in the heart of the community, with a modern design. In Reception a member of staff is always ready and willing to help and serve our community.



Pre-school ▼

We have a professional team of experienced Early Years Practitioners, including a Pre-School Lead Teacher, HLTA and supporting teaching assistants.

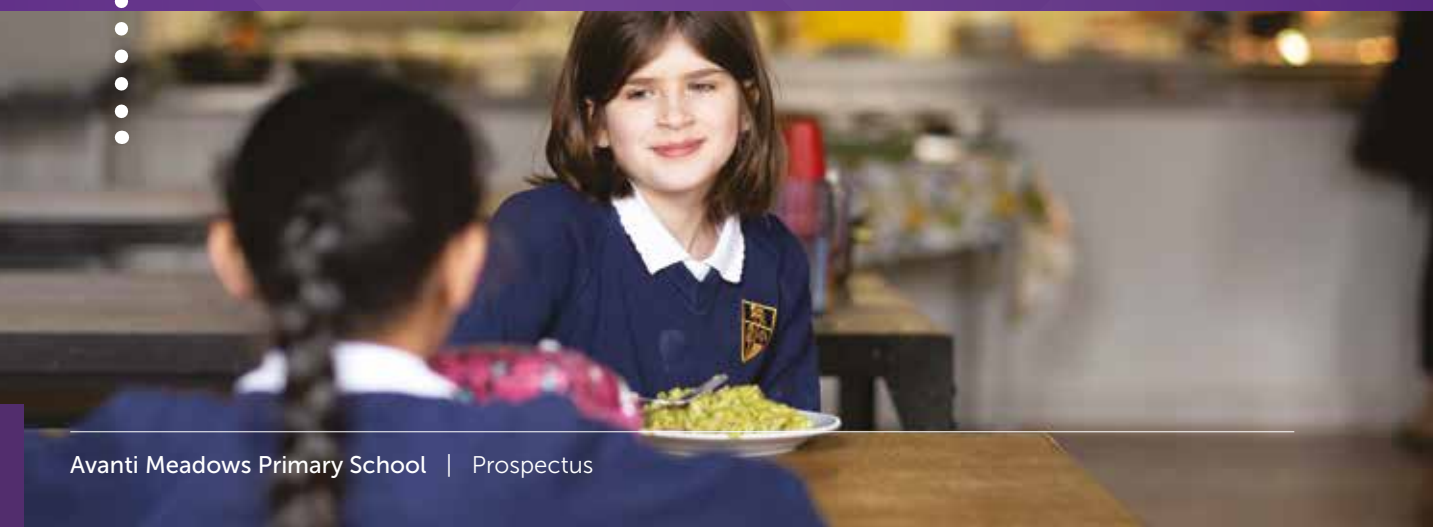


Dining area ▼

The lunch area allows students to enjoy nutritionally balanced and delicious vegetarian meals, prepared and served with love.

Art studio ►

An amazing space for pupils to become artists with plenty of room to workshop many skills.



Sports facilities ▼

Outdoor space dedicated to sports. MUGA (Multi Use Games Area) and sports field equipped with netball court and fully kitted with the latest sports equipment.



School lunches

An important part of our ethos is around the provision of hot, fresh, nutritious meals. Sharing tasty, healthy school lunches is an integral part of the educational experience at an Avanti school. It's also an opportunity to enhance social skills and table etiquette, ensuring lunchtimes are a positive experience for all. School staff often enjoy taking lunch with pupils, creating a family atmosphere.

The lunch meals cooked on-site are vegetarian (in line with the faith ethos of the Trust) and half-termly menus are also available on the School's website. If the lunch provision on offer does not meet your child's needs, or if your child has specific dietary requirements/preferences, please do speak to Govinda's (our catering provider) so that they can provide for your child accordingly.

We encourage parents to visit the school to sample the school lunches in order to satisfy themselves with the quality of provision. We strongly encourage parents who have financial constraints to apply for Free School Meals. An application form can be obtained from the school office. Any forms received by the school will be kept confidential.



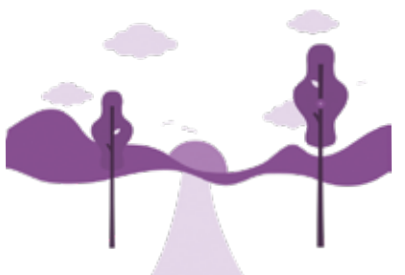


Life at Avanti



Wellbeing wisdom

Avanti staff have access to regular wellbeing sessions. Our previous sessions have been led by medical professionals, corporate coaches and even monks! We discuss everything from how to overcome stress to learning about meditation.



Retreats

Staff and upper KS2 students will have an opportunity to go to annual off-site retreats. These are fantastic retreats allowing; individuals to nurture and develop more friendships, engage in fulfilling activities whilst going out of their comfort zone, improve overall wellbeing and reconnect with nature.



Wide, rigorous and unique curriculum offer

Our schools offer a dynamic classroom approach in which students actively explore real-world problems and challenges and acquire a deeper knowledge. Students at all ages engage in projects, from studying the environment to social experiments to working on scientific innovations.



Yoga

Every student has access to Yoga and Mindfulness sessions ranging from 20 minutes to 1 hour a week. Yoga and Mindfulness help ground students, relieve stress and improve their overall health and wellbeing.



Fresh vegetarian meals

We believe a healthy gut is the basis of a healthy life, and that's why it's so important to us that we only use the freshest ingredients when preparing our tasty, nutritious vegetarian meals available for all children.



Avanti Community

Avanti hosts regular events for parents and the wider community. This is a series of events focused around wellbeing and development for parents in their personal and family lives.




Avanti Schools Trust

Avanti Schools are based across the country. The idea for Avanti began in 2003 and our first school was opened in 2008. Our vision was for a family of schools based upon our core principles of educational excellence, character formation, and spiritual insight. We now have over 5000 students and 600 members of staff across our family of 12 schools.

Avanti has a proven approach to school development and improvement, with excellent student outcomes across our schools for example our school outcomes are amongst the top 10% in the country at Key Stage 2 and 4.



Reviews from across the Avanti Schools Trust



"We have been with the school for four years now and are very happy. Our daughter is thriving, she has had the most wonderful teachers and built strong friendship groups, we have also developed a wide network of friends through the parent community. The grounds are simply beautiful and my daughter loves the extra curricular yoga class Avanti Schools remains my first choice of school in the area and I'm looking forward to my son joining next year."

Parent
of child in Year 4

"Thank you for welcoming me to the school today. It has been inspiring to meet staff and students so engaged in learning. My congratulations to everyone involved in the conception and opening of this splendid premises."

Damian Hinds
Former Secretary of State
for Education

"The provision for pupils' spiritual, moral, social and cultural development is exceptional."

School leaders and governors, through the Avanti Trust, are wholly committed to ambitious outcomes for all pupils."


Ofsted

"The school is a place I can happily call my second home. The environment captures all aspects of a quality education where everyone aspires to be the best versions of themselves and exceed their expectations. I couldn't image a friendlier, more pleasant and safer place to be inspired to learn in."

Student
Avanti School

"The teachers are always there to support you. The whole school is like a family. The teachers always encourage you and set you high targets. Even during the hard times we get a lot of help and the school wouldn't be the school it is without the teachers we have."

Student
Avanti School



"My son really enjoys going to Avanti. He enjoys all the interactive learning and loves playing ball games after lunch. The staff are fabulous and very enthusiastic. They really try to meet individual needs of the children. The school has a beautiful building and grounds. It's wonderful to see the children get to use them all."

Parent
of child in Year 2



“The provision for pupils’ spiritual, moral, social and cultural development is exceptional.

School leaders and governors, through the Avanti Trust, are wholly committed to ambitious outcomes for all pupils.”

Ofsted

Admissions

SCHOOL ADMISSIONS POLICY

<https://avanti.org.uk/avantimeadows/admissions/>

APPLY VIA THE HERTFORDSHIRE COUNTY COUNCIL ADMISSIONS WEBSITE

<https://www.hertfordshire.gov.uk/services/schools-and-education/schools-directory>

A Journey of Self-Discovery



AVANTI SCHOOLS TRUST

The Trust website is a good starting point to learn about the Avanti vision at play in our schools. Short videos are also online.



www.avanti.org.uk

HIGHLIGHTS AND UPDATES

The Avanti Life magazine brings you the very best of what is happening within our family of schools. Also available in print.



www.avanti.life

SCHOOL LIFE IN DETAIL

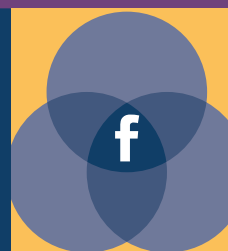
The school website offers up-to-date information on key aspects of school life, from ethos to admissions; school lunches to job opportunities.



www.avanti.org.uk/avantimeadows

SOCIALISING

We use Facebook as a shared community page where many school and Trust highlights are broadcast – a great way to stay informed and in touch.



www.facebook.com/avantischoolstrust

TWITTER

At Avanti Meadows we use Twitter to keep everyone updated about the amazing work our teachers and pupils are doing.



[@AvantiMeadows](https://twitter.com/AvantiMeadows)

INSTAGRAM

xxx



[avantimeadows](https://www.instagram.com/avantimeadows)

Avanti Meadows Primary School

Farnham Road
Bishop's Stortford CM23 1FQ

Phone: 01279 598575

Email: avantimeadows@avanti.org.uk

Website: www.avanti.org.uk/avantimeadows



AVANTI MEADOWS

Excellence · Virtue · Devotion

Avanti Meadows Primary School is part of the Avanti Schools Trust

Avanti Schools Trust is a charitable company limited by guarantee registered in England & Wales

Registered No: 07506598 • Registered Office: Avanti Schools Trust, Wemborough Road, Stanmore, Middlesex, England, HA7 2EQ