



AVANTI PARK  
Excellence · Virtue · Devotion

ISSUE 50  
3rd May 2024

SCHOOL CONTACT DETAILS  
[avantipark@avanti.org.uk](mailto:avantipark@avanti.org.uk)  
[absence.ap@avanti.org.uk](mailto:absence.ap@avanti.org.uk)  
Tel: 01373 832804



MESSAGE FROM THE  
PRINCIPAL

# The Avanti Park Post

Dear parents and carers,

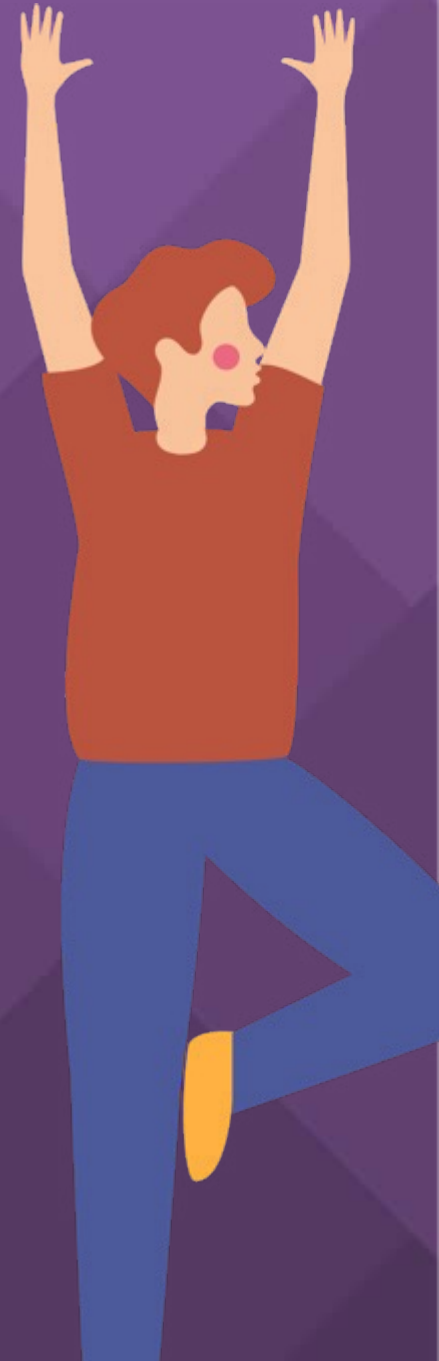
Welcome to the first Avanti Park Post of the summer term. Thank you to all the parents who have supported the new Safer Streets Initiative. It has made a huge difference to the safety of children and families at the start and end of the school day. I know that change can be hard to adjust to, but the Town Council and staff at school really appreciate your efforts to make Avanti Park a safer school.

I also wanted to thank you for the lovely messages of support since sharing the news that I will be leaving Avanti Park at the end of the summer term. It has been an emotional time for me and I will miss everyone at the school hugely. I'm not sure it will properly sink in for me until the last day of the school year!

Finally, year 6 have their SATs coming up in the week beginning the 13<sup>th</sup> of May. They have all been working really hard and we know that they will do themselves proud! We wish them lots of luck.

Have a wonderful weekend and I hope that the sun shines for Bank Holiday Monday

With best wishes



**Maple:**

Ren  
Ori  
Max

**Pine:**

Neve  
Phoenix  
Aila

**Sycamore:**

Alex S  
Luna K E  
Roman W

**Rowan:**

Tymek S  
Kai Y  
Daniel T

**Holly:**

Sasha M  
Ayla R  
Jayden &  
Dom

**Oak:**

Marlow E  
Isabel  
Maia-Leigh

**Ash:**

Ella  
Marco  
Solomon

**Cherry:**

George S  
Gil F  
Ruby G

**Cedar:**

Matilda S-S  
Lucy M  
Rosa B C

**Willow:**

Thomas B  
Herbie L-D  
Addie R

**Beech:**

Joni  
Yasmin  
George B

**Hazel:**

Elwood  
Dylan S  
Fox H

**Chestnut:**

Maxi B  
Zeph P-Q  
Henry V

**Birch:**

Ben H  
Django M  
Jasmine W

Star of the Week W/C  
11/03/2024  
18/03/2024  
25/03/2024

AVANTI PARK SCHOOL

**KS2 PE:**

Indi Y &  
Jude H  
Mabel S  
Daniel T

**EYFS/KS1**

**Yoga:**  
Joni W  
Edie L-B  
Isabel R

**Walnut:**

Sienna G-J  
George T  
Deki B

**House points so far this year....**

1st Harptree 20,456  
2nd Blackdown 19,397  
3rd Thurlbear 18,949  
4th Dommett 17,608

**Hawthorn:**

**KS2 Yoga:**

Camille B  
Roman W  
Ella M

**KS2 Art/DT:**

Asha F  
Asta D  
Matilda K

Star of the Week W/C

11/03/2024

18/03/2024

25/03/2024

**EYFS/KS1 PE:**

Aida M  
Fern A R  
Albie C

**Elder:**

Kyle L  
-  
Kayden B

**Aspen:**

Lucia  
Louis W  
Otto P

**AVANTI PARK SCHOOL**

# Notices



## REMINDER

Please can we remind everyone that pupils should not play on the climbing frame after or before school and must be supervised at all times.



## Order Your School Uniform Online

**BRIGADE**

## Free Delivery to School Service

Orders are placed in a queue until 15th and 30th of each month and delivered into School up to 14 days after.

### IMPORTANT SUMMER HOLIDAY ORDER INFORMATION

Last order date for free delivery into school is **14th June** then service switches to home delivery until **13th September** (Place your home delivery order by **26th July** for delivery before the start of term)

[www.brigade.uk.com](http://www.brigade.uk.com)

Register today to avoid missing out on Brigade promotions or important notifications by logging onto [www.brigadeparents.info](http://www.brigadeparents.info) or scan QR code



SUPPLYING SCHOOLS Since 1990

## Safer Streets Exemptions.

Thank you to everyone for their efforts not to use park Road this week as the Somerset Council Safer Streets Scheme entered its first week of their trial period. I think we can all agree that Park Road feels like a much safer environment for our children during school drop off and pick up times. We have had NO 'near miss' incidents all week which is a huge improvement. For your awareness there are some families within our school community who are exempt from the Safer Streets road closure, and will therefore be driving up park road and using the school car park. Families with children who have an EHCP and/or blue badge are automatically exempt from the road closure. Please can we remind everyone to be respectful of our families who have permission to use our car park.

**Exemptions include:** blue badge holders, parents/guardians of pupils with EHC plans, school staff, access to residential properties within the restricted zone, healthcare workers, users of Harry's Hydrotherapy Pool, school and public transport, emergency services, postal services, utilities, highways maintenance, street cleansing and waste collection

# Notices



We had a very special visitor in to school this week! Mrs Atkins brought her beautiful dog Sennen in to meet the children. They had a wonderful time saying hello and giving her lots of cuddles. Hopefully she will make a return visit.

## REMINDER

Please can we remind families that children should not be bringing glass drinking bottles, or food containers to school. Thank you



## Volunteers needed!

We have a new electronic library system that has been installed. As part of the process, we need to scan in all current books onto the system. Mrs Herrera is requesting parent volunteers to help with this process. The more people to help with this the better! Please contact [AvantiPark@Avanti.org.uk](mailto:AvantiPark@Avanti.org.uk) if you are available.



# Safer Streets



The wonderful Mojo Moves, along with staff from Frome town council, came to welcome children into school during the first week of the Safer Streets Scheme.

# Year 2 DT



In their DT Mechanics Unit, Year 2 have been exploring the size of wheels and the positioning of axles, and considering how these affect the movement of vehicles.

# KS3 Digital Leaders



Our KS3 digital leaders have been working hard to support both children and teachers in the primary phase with their computing knowledge. Well done to Jamie, Gryff, Sam and Leo on facilitating an engaging and fun lesson for Cedar class.



# Spiritual Insight Day



During the year 3 and 4 Spiritual Insight Day, the children created artwork based on an emotion or feeling. They represented this in any way that felt personal to them.



# SEND Newsletter



## SEND Navigators

**Link:** [SEND Navigators - Parent Carer Forum - Frome Town Council](#)

Information on how to refer to the SEND Navigators service (can be self-referral if needed) and also the dates/times of the Drop-in offer based at Frome Town Hall, please see the FIND link above.

## Frome Autism & ADHD parent Forum

**Link:** [Frome Autism ADHD Parent Forum - Frome Town Council](#)

Information about this group can be found on this FIND link, they run a thriving Facebook support group along with monthly drop in sessions at the Town Hall and activities in the holidays for families.

## The Pod – JAMM

**Link:** [JAMM - The Pod parent cafe - Frome Town Council](#)

Monthly support session runs by The Pod more information to be found here on their FIND page.

Unique – Frome ASD/ADHD/Additional Needs support group – South Parade Club

**Link:** [ASD,Adhd additional needs frome support group | Facebook](#)

## Local Offer

**Link:** [Somerset's SEND Local Offer](#)

Lots of information and guidance for families available on this website.

## Parent Carer Drop-In Session Frome



Frome Town Hall , 10am - 12pm  
No need to book.

Come and meet Tasha our SEND Navigator who is here to help families of children with Special Educational Needs and/or Disabilities in Somerset to:

- Access good quality information.
- Signpost to people who can help.
- Support parents to prepare for meetings and appointments.
- Help parent carers understand what help is available.
- Help parent carers by supporting with completion of forms such as DLA, PIP and applications for funding from grants.
- Help parent carers build confidence in understanding and supporting their child's needs.

### 2024 Dates

- Thursday 28th March
- Thursday 25th April
- Thursday 27th June
- Thursday 25th July
- Thursday 26th Sept
- Thursday 28th Nov



# KS2 Anxiety Workshop



Dear Parents and Carers,

Place2Be is hosting a workshop for parents with children in Key Stage 2 (years 3, 4, 5, & 6), on the theme of anxiety and worry. Come along to learn more about anxiety, how it can impact children and how we can support them. A workshop for any parent wishing to know more!

Place2Be is a national children and young people's mental health charity with almost 30 years'

experience working with pupils, families and staff in UK schools.

Come along to meet Lucy, our school Place2Be Mental Health Practitioner and Sarah, Place2Be

Educational Psychologist

To book a place please book your free ticket on the following eventbrite link ...

<https://www.eventbrite.co.uk/e/an-introduction-to-understanding-and-regulating-a-worry-tickets-894198390457?aff=oddtcreator>

Once your place is confirmed, please come to the school reception on the day.



# Avanti Park Cross Country



We are very proud to announce that on Tuesday 24<sup>th</sup> April, three pupils from Avanti Park were selected to run in the Inter Area Cross Country for Mendip Area Team at Yeovil/Mudford Recreation Ground. They formed the year 3/4 team who came second overall and yr5/6 who came first-1a-fantastic result! A very big congratulations to Willow Antell, Murphy Wood and Isy Hopkinson-Scott.



# Events



**Football Fun Factory**

**Football Fun and Development - Ages 5-12**

Selwood Academy  
Mondays  
5-6PM



Register For a 3 week Free trial  
[www.thefootballfunfactory.co.uk](http://www.thefootballfunfactory.co.uk)



*May Day*

BANK HOLIDAY MONDAY 6TH OF MAY @ 10-12

BRING THE WHOLE FAMILY AND JOIN US FOR A MAGICAL MAY DAY CELEBRATION AMIDST THE BEAUTY OF THE WOODLAND!

ACTIVITIES INCLUDE: MAGIC WAND AND CROWN MAKING, SONGS AND STORYTELLING, MAY POLE DANCE, FREE PLAY AND EXPLORATION AND MARSHMALLOW TOASTING

MIKES MEADOW, NORTHEND, BATHEASTON, BATH, BA17EP



TICKET: £10 CHILD/£10 ADULT  
[BOOKWHEN.COM/CREATIVEROOTS](http://BOOKWHEN.COM/CREATIVEROOTS)



We are a friendly, welcoming support group for families of children with additional needs.

We offer a monthly group session where we can provide support, advice and signpost to other useful organisations.

Dates for 2024

- January 15th 10am - 12pm
- February 12th 10am - 12pm
- March 18th 10am - 12pm
- April 15th 10am - 12pm
- May 20th 10am - 12pm
- June 17th 10am - 12pm
- July 15th 10am - 12pm
- September 16th 10am - 12pm
- October 21st 10am - 12pm
- November 18th 10am - 12pm
- December 16th 10am - 12pm

Venue - Frome Town Hall Cafe

Come along for a cuppa, make new friends and share experiences in a private and safe space.

We look forward to welcoming you!

Any questions please email-  
[fromeautism.adhdparentforum@gmail.com](mailto:fromeautism.adhdparentforum@gmail.com)  
or join us on Facebook.

# Co-Parenting Course



Having a straightforward co-parenting relationship with your ex-partner can be fraught with difficulties. This is where we can help.

5<sup>th</sup> June: 9.30am-11.30am @ Frome Town Hall <https://www.eventbrite.co.uk/e/872370783497?aff=oddtcreator>

25<sup>th</sup> June: 6pm-8pm @ Frome Town Hall <https://www.eventbrite.co.uk/e/872367313117?aff=oddtcreator>

If you are a separated parent, or a parent who are experiencing relationship difficulties are welcome to sign up. Come and join us for a relaxed and supportive Cafe where we chat about how to successfully navigate co-parenting challenges. Whether you are newly separated, have been separated and co-parenting for a while, or experiencing relationship difficulties, this Cafe is designed to give you practical tips on dealing with the challenges, putting the well-being of your children at the centre. Ruth James, will be running the Cafe and will share top tips and advice to help you:

1. Develop a successful co-parenting relationship and reduce conflict.
2. Understand how you can stay connected with your children and support them with smooth handovers and transitions.
3. Find out more about practical tools to reduce conflict in co-parenting communications.
4. How to manage different styles of parenting in different homes.

**There will also be an opportunity for you to ask any questions you may have.**

Please note that this Cafe is not appropriate if there is currently domestic abuse in your relationship. If you are in an abusive relationship, please go to [Somerset Domestic Abuse](#) for the support you need.

This is what a couple of parents said about a Cafe:

"Worth going to. Feels supportive – come out of hiding and speak with others."

"Safe space to talk, no judgements."

The Cafe has been organised by Melody Hunter Evans, Children and Young People's Project Officer, Frome Town Council and will be run by Ruth James, the Reducing Parental Conflict Coordinator at Somerset Council. Ruth has many years' experience of working with parents and is now working with parents to reduce parental conflict.

We will be serving tea, coffee, and cake as this is a Cafe!

Places are limited so please book early to guarantee your place.

We look forward to meeting you.

Melody and Ruth

For more information about relationship support for parents please go to:

[Somerset children & young people : Health & Wellbeing : Somerset Parents And Carers Managing Relationship Conflict \(cypsomersehealth.org\)](#)

# Special Thanks



We are continuing our “Special Thanks” scheme in to the new year whereby parents, guardians, and carers are able to nominate and recognise staff for their efforts for supporting members in our Avanti community. This scheme was piloted at Avanti Park last year and made a real difference to our staff and their wellbeing.

To nominate a member of staff, please click on the following link:

<https://avanti.org.uk/avantipark/parents/staff-nominations-for-special-thanks/>



# Stay Safe, Be Well

## Right of the week

Every child who cannot be looked after by their own family has the right to be looked after properly by people who respect the child's religion, culture, language and other aspects of their life.

**20**



**AVANTI** SCHOOLS  
TRUST



**AVANTI PARK**  
Excellence · Virtue · Devotion