



KRISHNA AVANTI

Excellence · Virtue · Devotion

# Open Morning


Tuesday 7<sup>th</sup> November  
&  
Thursday 30<sup>th</sup> November  
2023

# Housekeeping

---

 Please switch your mobile phone off

 Fire Exits

 Please wait till the end to ask any  
questions





# Introductions

---



Principal: Mrs Shriti Bellare




Assistant Principal: Mrs Luisa Nielsen




Assistant Principal: Mrs Alisha Mahoon





# Why do you want your child to attend KAPSH?

 An Academy school rooted in Hindu values based on the teachings of Krishna Chaitanya.

Three key aims which underpin the ethos of our school are:

 **Education Excellence** - An emphasis on independent thought and personal choice fans every pupil's innate and emerging passion for learning.

 **Character Formation** –Respect, Integrity, Courage, Empathy, Gratitude and Self-Discipline. We aspire to live and breathe our six Avanti Values

 **Spiritual Insight** - The development of spiritual insight is at the heart of the curriculum and draws on the teachings of Krishna Chaitanya, which embraces a universal, inclusive approach to spirituality.





# What makes an Avanti Education unique?

Curriculum offer and high-quality learning environment.



# **What makes an Avanti Education unique?**

---



We encourage dialogue  
and expand children's  
thinking as they  
experience new things.

# What makes an Avanti Education unique?



Relationships in our classroom between pupils, staff and our parent community.





# Collective Worship

- Children begin their day with worship in the temple.
- We also encourage the children to take part in our prayers before lunch and at the end of the day.
- We also have Philosophy Religion & Ethics (PRE), Sanskrit and Yoga lessons taught weekly by a specialist teacher.







# The Avanti Way Booklet

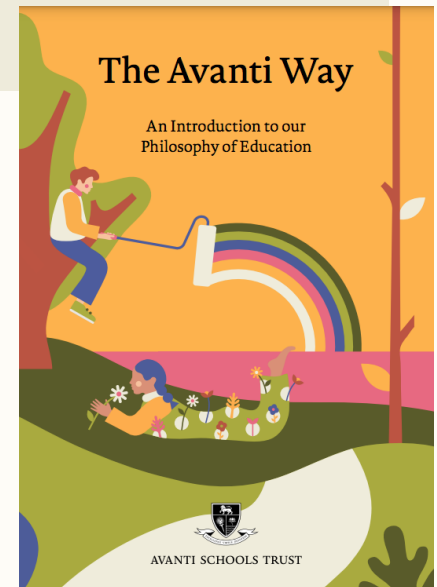
## WHY WE'RE HERE

Avanti exists to help each person become a well-rounded human being through intellectual, personal and spiritual growth, and so make the world a better place.

READ MORE ABOUT THE AVANTI WAY

More information can be found  
on our website

<https://avanti.org.uk>





# Our Approach at KAPSH



- 🏰 7:50am soft start and 2:40pm end (2:30 pm for Nursery)
- 🏰 Carefully Planned Curriculum- Knowledge, Skills and interests. Focus on children remembering their learning
- 🏰 Teaching and Learning covers the Philosophy, Religion and Ethics curriculum incorporated to our Ethos, themes and values
- 🏰 Restorative Justice
- 🏰 Worship and Meditation
- 🏰 Partnership working with parents –Volunteers in school, Home School Learning, FOKAS.
- 🏰 External School Clubs which can be found on our website, including wrap around provision.

# Dress Code: Nursery Only

- Navy Sweatshirt or Jumper
- Navy or Black Tracksuit Bottoms
- White Polo Shirt
- White or Black Trainers/Shoes
- Black, Grey or White Socks
- Wellington Boots
- Optional: Avanti Jumper

You can purchase all of these items in any local supermarket or high street clothing shop. If you would like to get a Jumper with a school logo, contact Brigade.



**Nursery Children will need to bring a book bag in which is suitable for storing their reading and library book.**



# School Uniform- Reception-Y6

- See Uniform Policy on School Website
- V Neck Knitted Jumper
- Knitted Cardigan
- White Polo shirt
- Grey trousers
- Grey Skirt
- Black/Grey Socks
- Black shoes

## Physical Education (P.E.)

- White T Shirt
- Navy tracksuit bottom for winter
- Navy shorts for summer
- Black plimsolls or black trainers
- Navy leggings for girls- Yoga



**Reception Children will also need to purchase a book bag**

<div> <div>GOVINDA'S</div> <div>Vegetarian School Meals</div> <div>Autumn &amp; Winter Menu 2022</div> <div>BRIDGEMAN ACADEMY</div> </div>						
	Option	MONDAY	TUESDAY	WEDNESDAY	THURSDAY	FRIDAY
WEEK 1	Main Option	Tomato Ratatouille, Masoor Dal & Rice, Greens of the day	Waffle & Baked Beans, Black Pea Curry with Noodles or Rice, Greens of the day	Salad, Rajma with Noodles or Rice, Greens of the day	Mushroom & Spinach Pie, Chops, Greens of the day	Pizza & Chips, Chicken, Greens of the day
	Side	Assorted Salads & Fruit	Assorted Salads & Fruit	Assorted Salads & Fruit	Assorted Salads & Fruit	Assorted Salads & Fruit
	Dessert	Fruit Yogurt	Apple Crumble & Custard	Vanilla Cake	Cookies	Ice Cream
	Drinks	Water	Water	Water	Water	Water
WEEK 2	Main Option	Alma & Cheese, Vegetable Curry with Noodles or Rice, Greens of the day	Mediterranean Feta, Aubergine & Peas, Greens of the day	Potato & Egg, Spiced Lentils with Noodles or Rice, Greens of the day	Lasagne, Beef Bolognese, Greens of the day	Pizza & Chips, Chicken, Greens of the day
	Side	Assorted Salads & Fruit	Assorted Salads & Fruit	Assorted Salads & Fruit	Assorted Salads & Fruit	Assorted Salads & Fruit
	Dessert	Fruit Yogurt	Chocolate Lado	Chocolate Cake	Chocolate Mousse	Ice Cream
	Drinks	Water	Water	Water	Water	Water
WEEK 3	Main Option	Roasted Vegetable Curry & Pasta, Masoor Dal & Rice, Greens of the day	Chilli Beans Tacos, Masoor Dal Curry with Noodles or Rice, Greens of the day	Potato & Cheese, Vegetable Curry with Noodles or Rice, Greens of the day	Mushy Potatoes & Sausage & Greens, Chilli Beans with Noodles or Rice, Greens of the day	Pizza & Chips, Chicken, Greens of the day
	Side	Assorted Salads & Fruit	Assorted Salads & Fruit	Assorted Salads & Fruit	Assorted Salads & Fruit	Assorted Salads & Fruit
	Dessert	Fruit Yogurt	Fruit Lado	Carrot Cake	Strawberry Lado	Ice Cream
	Drinks	Water	Water	Water	Water	Water
<div> <div>Please contact <a href="mailto:bridgetman@bridgeman.ac.uk">bridgetman@bridgeman.ac.uk</a> for any enquiries</div> <div>Please Note: Some of the Food Items &amp; Drinks are available every day. Seasonal fruits and vegetables are used.</div> </div>						

# School Lunches

- Provided for Full Day Nursery and Reception class onwards
- Enhances Satvic consciousness, concentration & learning
- Low cost & freshly prepared on site
- Nursery pupil pay for school lunch





# Classroom Environment



- Temple spiritually uplifting and calming
- In-class and out-side learning spaces
- Learning resources
- Specialist teaching
- Forest School
- Temple and Prasadam
- Astro Turf Pitch, Sports Hall, Outdoor Playgrounds
- Creative Kitchen
- School Library







# EYFS Curriculum

- The children in the Foundation Stage will have the opportunity to learn in a creative, play- based environment.
- We plan opportunities for children to develop in all seven areas of learning through different levels centred around play



## Adult supported activities

Activity chosen by the child and adult supports the child to scaffold child's learning to move their learning.

## Child Initiated activities

The child applies the skills they have developed in independent activities.

## Personalised Learning

The practitioner supports a child in a small group or on a 1:1 basis based on their needs





# Year 1 to Year 6

---

- Curriculum Offer: Follow the National Curriculum, in addition we offer Yoga, PRE, Sanskrit, French, Forest School (Termly)
- Whole Class Teaching and Small Group Work
- End of Day Reading
- Daily Mile
- Reading and Library Book
- Swimming- Year 4 and Year 6
- Weekly Homework
- Assessments- Keep up not catch up
- Y6 Boosters



# Enrichment

- School Trips
- Weekly Assembly: Reflection to support Spiritual Development
- Links with the Local Area
- Pupil Leadership Day/ Groups
- Interfaith Choir/ Kirtan Group
- Competitions
- Class Performances
- Science Week, Maths Week, National Story Telling Week...





# Special Educational Needs (SEN) and Disability

---

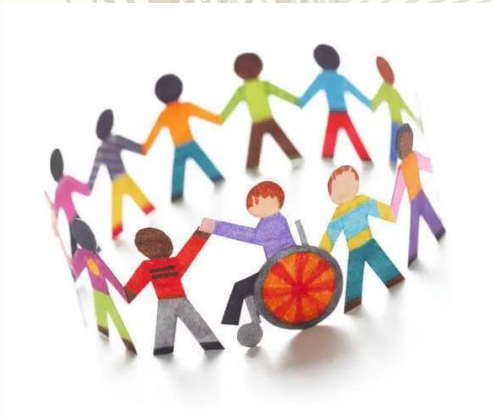


Please inform us if you or your child need any further help and support

Disabled Parking is available – must be requested in writing with a valid ID badge (must be renewed with the school office annually)

SENCO- Ann Luth [ann.luth@avanti.org.uk](mailto:ann.luth@avanti.org.uk)

Inclusion Lead- Alisha Mahoon



We believe that parent-teacher communication is necessary for maximum school success.

# Partnership with Parents



- 🏰 EYFS- Y1 Weekly Learning Shared
- 🏰 Home Visits
- 🏰 Google Classroom
- 🏰 Personalised Targets/ Parent Consultations
- 🏰 Parent Workshops
- 🏰 Stay and Play
- 🏰 Celebrating Learning: Book Looks
- 🏰 Kirtan Events
- 🏰 Assemblies and Performances
- 🏰 Open Door Culture with Nurture at the Heart





KRISHNA AVANTI

Excellence · Virtue · Devotion

# Admissions Information

---





# Nursery and Reception Online Application Process

---

- The admission process for Harrow Council schools and residents is facilitated online via the links below. If you live outside of Harrow borough you will need to apply online through your respective council's website where you live.
- Applying online is easy and you should get an instant acknowledgement that your application has been received by the council.
- **Harrow Council links to apply online and KAPS SIF form can be found on the school website:** <https://avanti.org.uk/kapsharrow/admissions/>
- We strongly recommend that you complete the application early. If you have any queries with regards to your online application process, please contact your respective council where you live and speak to a member of admissions team or speak to a member of the school office team for further information.

# How to Apply for Nursery and Reception



**KAPS Website:** <https://avanti.org.uk/kapsharrow/admissions/>

**Deadline to Apply:** 15 January 2024

**Harrow Council links to apply online**

**Harrow Admissions for Reception Application** - (Children born between 1 September 2019 and 31 August 2020 are eligible to apply for reception admission in September 2024)

<https://www.harrow.gov.uk/schools-learning/apply-primary-school-place>

**Harrow Admissions for Nursery Application** (Children born between 1 September 2020 and 31 August 2021 are eligible to apply for Nursery admission in September 2024).

<https://www.harrow.gov.uk/schoolnursery>

Complete Harrow Council Online Nursery Application Form and thereafter, submit a copy of your proof of documents (Nursery application form or reference number along with your latest council tax bill and your child's birth certification) to the school office within one week of submitting the HC Online Nursery application and no later than deadline date of 15<sup>th</sup> January 2024.

**For help and advice on how to complete your application please contact Harrow Council or the school office on 0208 381 3344**

**Harrow Council Telephone:** 020 8901 2697

**Harrow Council Email:** [schooladmissions@harrow.gov.uk](mailto:schooladmissions@harrow.gov.uk)

# **SIF: Supplementary Information Form**

---

If you wish to apply for a place under the faith criteria of the admissions policy parents must also complete a Supplementary Information Form ('SIF'). Please download the form on our website.

The original SIF must be submitted (hand delivery or post the form) to school office by the deadline date of 15 January 2023.

Please follow up with the Temple office to confirm their procedures on the signing of the SIF forms.





# Transferring from Nursery to Reception

---

It is important to understand that if your child is currently attending our nursery class that does not mean your child will be given a place in the reception class automatically.

All Nursery pupils' parents must make a separate application for reception entry.

Please remember as admissions is not guaranteed you may need to plan and prepare your child to change school at the end of the academic year.





**Every child deserves the best possible start in life and the support that enables them to fulfil their potential.**

**EYFS FRAMEWORK 21**

# Open Morning Video

---





# Questions

---

Thank you for listening.

We would like to open the floor to any questions you might have.

Any specific admissions questions can be answered by our Admissions Officer– Neha Kumar





# School Tour

